

**CAPISTRANO UNIFIED SCHOOL
DISTRICT
IMPROVEMENT AREA NO. 2002-1 OF
COMMUNITY FACILITIES DISTRICT
NO. 90-2**

July 26, 2010

Public Finance
Facilities Planning
Urban Economics

Newport Beach
Riverside
San Francisco

**ADMINISTRATION REPORT
FISCAL YEAR 2010-2011**

**CAPISTRANO UNIFIED SCHOOL DISTRICT
IMPROVEMENT AREA NO. 2002-1 OF
COMMUNITY FACILITIES DISTRICT NO. 90-2**

Prepared for

**CAPISTRANO UNIFIED SCHOOL DISTRICT
33122 Valle Road
San Juan Capistrano, California 92675**

Prepared by

**DAVID TAUSSIG & ASSOCIATES, INC.
5000 Birch Street, Suite 6000
Newport Beach, California 92660
(949) 955-1500**

Table of Contents

<i>Section</i>	<i>Page</i>
<i>Introduction</i>	1
<i>I. Special Tax Classifications and Development Update</i>	3
Special Tax Classifications.....	3
Development Update	3
<i>II. Sources and Applications of Funds</i>	5
Description of Funds and Accounts.....	5
Sources and Uses of Funds (Series 2003).....	9
Account Balances (Series 2003)	10
<i>III. Fiscal Year 2009-2010 Special Tax Levy</i>	11
<i>IV. Fiscal Year 2010-2011 Special Tax Requirement</i>	12
<i>V. Method of Apportionment</i>	14
Maximum Special Taxes.....	14
Apportionment of Special Taxes	14

EXHIBITS

- Exhibit A** - Summary of Transactions to Funds and Accounts for Fiscal Year 2009-2010
Exhibit B - Special Tax Roll for Fiscal Year 2010-2011

Introduction

This report provides an analysis of the financial and administrative obligations of Improvement Area No. 2002-1 of Community Facilities District No. 90-2 (“IA No. 2002-1 of CFD No. 90-2”) of the Capistrano Unified School District (the “School District”) resulting from the sale of the \$49,675,000 Series 2003 Special Tax Bonds (the “2003 Bonds”) in October 2003.

IA No. 2002-1 of CFD No. 90-2 is a legally constituted governmental entity established under the Mello-Roos Community Facilities Act of 1982, (the “Act”) as amended. The Act provides an alternative method for the financing of certain public capital facilities and services. Specifically, IA No. 2002-1 is authorized to issue up to \$50,000,000 in bonds. The proceeds of the 2003 Bonds are to be used for various road and bridge improvements. In addition, certain school facilities may be financed through the levy of special taxes.

The obligations of IA No. 2002-1 of CFD No. 90-2 are both secured and repaid through the annual levy and collection of special taxes from all property subject to the tax within the community facilities district. In calculating the special tax liability for fiscal year 2010-2011, this report not only examines the financial obligations of the current fiscal year, but also analyzes the amount of new development which has occurred within the boundaries of the community facilities district.

This report is organized into the following sections:

Section I

Section I provides an update of the development activity occurring within IA No. 2002-1. All new building permit activity is identified, including cumulative figures for “Developed Property.”

Section II

Section II examines the financial activity in the funds and accounts established pursuant to the Bond Indenture dated November 1, 2003 (the “Indenture”) between IA No. 2002-1 and the fiscal agent. A year-to-date summary illustrating all disbursements, special tax receipts and interest earnings of the 2003 Bonds is provided.

Section III

Section III analyzes the fiscal year 2009-2010 special tax levy.

Section IV

Section IV determines the financial obligations of IA No. 2002-1 for fiscal year 2010-2011.

Section V

Section V reviews the methodology used to apportion the special tax requirement to Developed and Undeveloped Property.

I. Special Tax Classifications and Development Update

Special Tax Classifications

The methodology employed to calculate and apportion the special tax is contained in a document entitled the Rate and Method of Apportionment of the Special Tax. The Rate and Method of Apportionment defines eight categories of taxable property, namely “Developed Property,” “Taxable Golf Course Property,” “Taxable Property Owner Association Property,” “Taxable Public Property,” “Undeveloped Non-Residential Property,” and “Undeveloped Property.” The category of Developed Property is in turn divided into two separate special tax classifications based on the type of use of the structure built thereon. A table of the Developed Property special tax classifications is shown below.

**Improvement Area No. 2002-1
Developed Property
Property Classifications**

Class	Designation
1	Residential Property
2	Non-Residential Property

Developed Property is distinguished from Undeveloped Property by the issuance of a building permit. Specifically, property for which a building permit was issued as of March 1 will be classified as Developed Property in the following fiscal year. For example, all property in IA No. 2002-1 for which building permits were issued prior to March 1, 2010, will be classified as Developed Property in fiscal year 2010-2011. Hence, the development research discussed below focuses on the twelve month period ending March 1, 2010.

Development Update

IA No. 2002-1 covers a portion of CFD No. 90-2 and encompasses approximately 1,090 gross acres of land located in the portion of southern Orange County known as Talega. Of this acreage, approximately 255 acres are expected to be developed with taxable property.

Background research was conducted to determine the amount and type of development activity that occurred during the previous fiscal year. Review of the City of San Clemente’s building permit records indicated that prior to March 1, 2010, building permits had been issued for 1,747 residential dwelling units and 9.63 acres of Non-Residential Property. A total of 18.40 taxable acres in the district are considered Undeveloped Property.

The table below lists the aggregate amount of Developed Property by special tax classification.

**Improvement Area No. 2002-1
Cumulative Developed Property**

Class	Designation	Number of Units/Acres	Building Square Footage
1	Residential Property	1,747 Units	4,950,220
2	Non-Residential Property	9.63 Acres	107,137

II. Sources and Applications of Funds

Description of Funds and Accounts

The Indenture established five funds for IA No. 2002-1. They are the Special Tax Fund, Rebate Fund, Special Reserve Fund, Acquisition and Construction Fund, and Escrow Fund. Within the Special Tax Fund, an Interest Account, a Principal Account, a Redemption Account (and an Escrow Bonds Redemption Subaccount therein), a Reserve Account and an Administrative Expense Account were created. Within the Rebate Fund a Rebate Account and an Alternative Penalty Account were created. Within the Acquisition and Construction Fund a Costs of Issuance Account and a Project Account (and a City Facilities Subaccount and School Facilities Subaccount therein) were created. Within the Escrow Fund an Escrow Reserve Account and an Escrow Interest Account were created. All funds, accounts, and subaccounts for IA No. 2002-1 are shown in Chart 1.

All special tax receipts are deposited in the Special Tax Fund. Monies in the Special Tax Fund are allocated based on the priority set forth below (see Chart 2):

1. **Administrative Expense Account of the Special Tax Fund** - an amount necessary to defray the School District's cost of administering IA No. 2002-1 for the fiscal year, up to the Administrative Expense Cap, provided however that any amounts in excess of the Administrative Expense Cap shall not take priority over items 2 and 3 below;
2. **Interest Account of the Special Tax Fund** - an amount sufficient to make the interest payment on the next succeeding Interest Payment Date;
3. **Principal Account of the Special Tax Fund** - an amount sufficient to make the principal payment due on the following September 1;
4. **Redemption Account of the Special Tax Fund** - an amount sufficient to make any Sinking Fund Payments due on the Bonds for the fiscal year as well as any principal and premium payments due in relation to the School District's optional redemption of the Bonds;
5. **Reserve Account of the Special Tax Fund** - any amount that may be necessary to replenish this account to the Reserve Requirement;
6. **Rebate Fund** - any money owed to the Department of the Treasury of the United States of America due to the calculation of Excess Investment Earnings in accordance with section 3.08 of the Resolution, and;
7. **Special Reserve Fund** - all money remaining in the Special Tax Fund after the above six disbursements are made will be transferred to the Special Reserve Fund.

The Reserve Requirement is an amount equal to the lesser of (i) ten percent (10.00%) of the original proceeds of the Bonds, (ii) maximum annual debt service on the Bonds, or (iii) one hundred twenty-five percent (125.00%) of the average annual debt service on the Bonds.

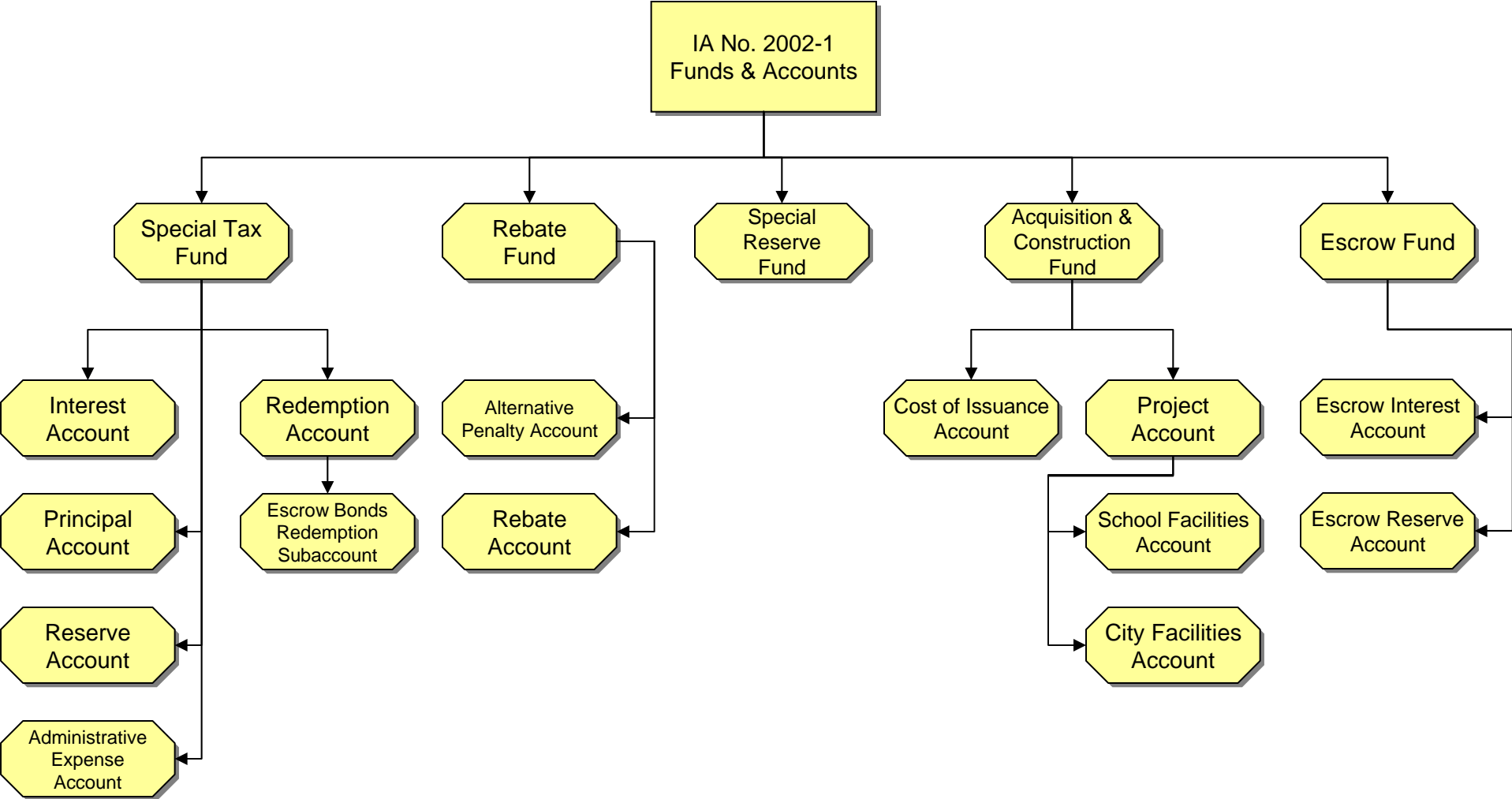
The Acquisition and Construction Fund is used exclusively to pay project costs and cost of issuance for the Bonds. Upon verification that any money amounts remaining in the Acquisition and Construction Fund are no longer needed to pay Project Costs or Costs of Issuance, the Fiscal Agent will transfer all or such specified portion of the remaining money on deposit in one or more of the accounts in the Acquisition and Construction Fund to the Special Tax Fund.

Moneys in the Escrow Fund will generally be used either to pay project costs, or will be applied to the redemption of the 2003 Bonds. Upon satisfaction of the conditions specified in the Indenture, including value to lien tests, all or a portion of the funds in the Escrow Account will be transferred to the Project Account and the Reserve Account. Money in the Escrow Interest Account will be used to make interest payments on the Deemed Escrow Bonds.

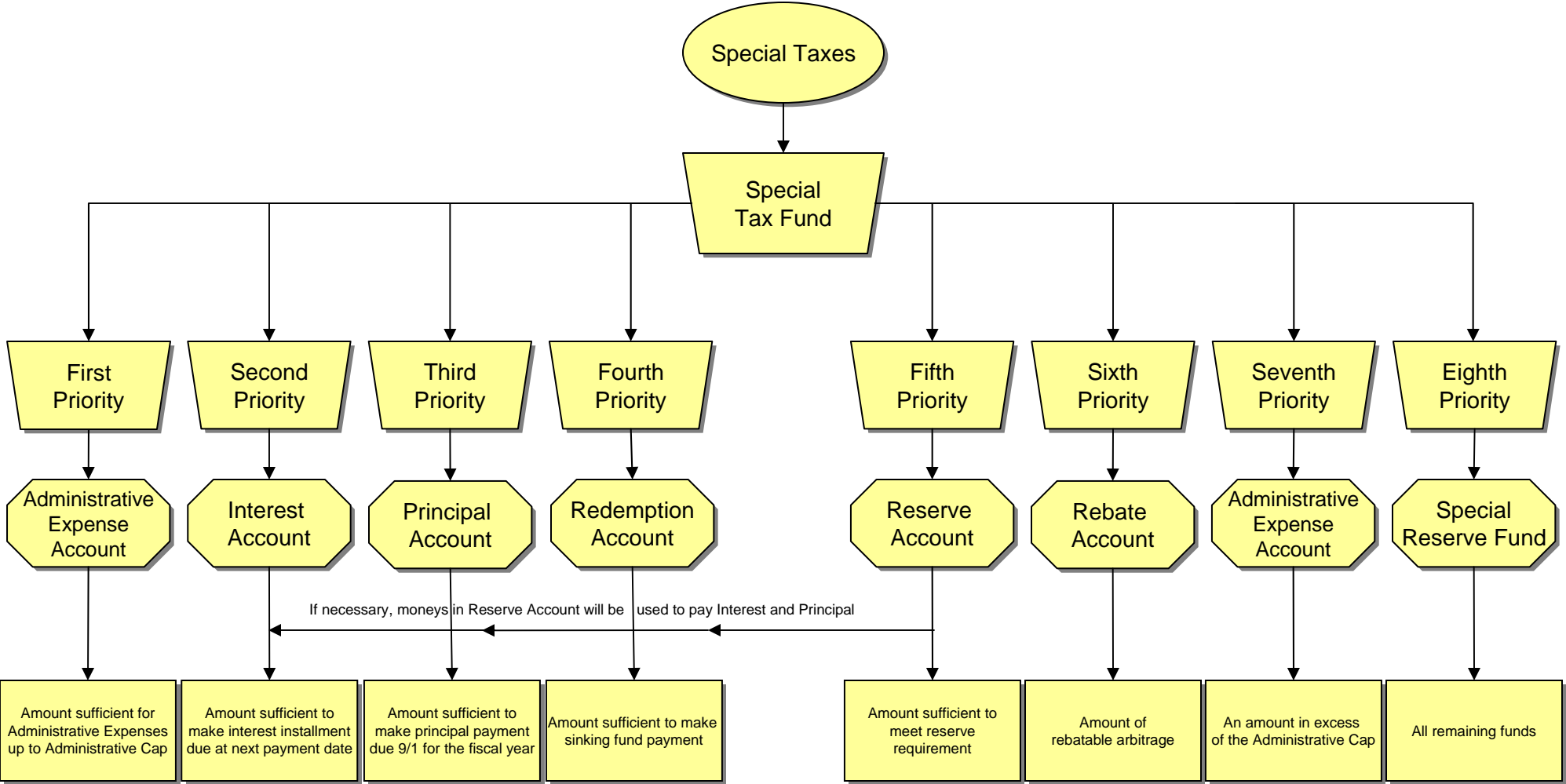
Money held in any of the aforementioned funds, accounts and subaccounts can be invested by the Fiscal Agent at the direction of the School District and in conformance with the limitations set forth in the Indenture. Investment interest earnings, if any, will generally be credited to the fund or account for which the investment was made. Investment interest earnings on all amounts in the Administrative Expense Account of the Special Tax Fund shall be deposited in the Special Reserve Fund. To the extent that this rule is not applicable, investment interest earned will be applied to the Interest Account of the Special Tax Fund.

The diagram on the following page illustrates the flow of special tax revenues for IA No. 2002-1.

Capistrano Unified School District
Improvement Area No. 2002-1 of Community Facilities District No. 90-2
Series 2003
Funds and Accounts



Capistrano Unified School District
Improvement Area No. 2002-1 of Community Facilities District No. 90-2
Series 2003
Funds and Accounts Flow of Funds Diagram



Sources and Uses of Funds (Series 2003)

IA No. 2002-1's Series 2003 sources of funds for fiscal year 2009-2010 totaled \$3,575,149 all of which were special tax receipts.

Total uses of funds for fiscal year 2009-2010 totaled \$4,145,105. Interest payments on the bonds equaled \$2,856,426. Principal payments on the bonds totaled \$320,000. Payments for the acquisition and/or construction of school facilities totaled \$217,609. Expenses for professional services incurred by IA No. 2002-1 equaled \$279,159. In addition, payments made to the Certificates of Participation for debt service obligations totaled \$471,911.

A more detailed analysis of all transactions within the Series 2003 funds and accounts for the 2009-2010 fiscal year is included as Exhibit A.

Account Balances (Series 2003)

At the close of fiscal year 2009-2010 the various funds and accounts established for the 2003 bonds had the following balances:

Special Tax Fund	\$1,796,301
Administrative Expense Account	\$91,155
Interest Account	\$0
Principal Account	\$0
Redemption Account	\$0
Reserve Account	\$4,956,238
Rebate Account	\$0
Alternative Penalty Account	\$0
Special Reserve Fund	\$1,518,813
Acquisition & Construction Account	\$0
School Fund Subaccount	\$5,064
City Fund Subaccount	\$0
Escrow Fund	\$0
Escrow Interest Account	\$0
Escrow Reserve Account	\$0
Capitalized Interest Subaccount	\$0
Cost of Issuance Account	\$0

III. Fiscal Year 2009-2010 Special Tax Levy

The aggregate special tax levy for fiscal year 2009-2010 equaled \$3,447,936. As of July 12, 2010, \$3,298,318 in special taxes had been collected by the County. The remaining \$149,618 in special taxes are delinquent, resulting in a delinquency rate of 4.34 percent.

As a participant in the Teeter Program, the School District will receive an apportionment from the County equal to the delinquent unpaid special taxes for fiscal year 2009-2010. This apportionment is anticipated to occur early in fiscal year 2010-2011.

In addition to the Teeter Program, IA No. 2002-1 of CFD No. 90-2 has covenanted to commence foreclosure proceedings against (i) parcels with delinquent special taxes in excess of \$5,000 and (ii) all properties with delinquent special taxes if the delinquency rate exceeds five percent. Notwithstanding the foregoing, IA No. 2002-1 of CFD No. 90-2 may elect to defer foreclosure proceedings on any parcel of Developed Property which is owned by a delinquent property owner whose property is not, in the aggregate, delinquent in the payment of special taxes for a period of five years or more in an amount in excess of \$10,000 and the amount in the Reserve Account is at least equal to the Reserve Requirement.

Based on the current level of delinquencies, no foreclosure action is required.

IV. Fiscal Year 2010-2011 Special Tax Requirement

For fiscal year 2010-2011, the special tax requirement is equal to \$3,591,096 and is calculated as follows:

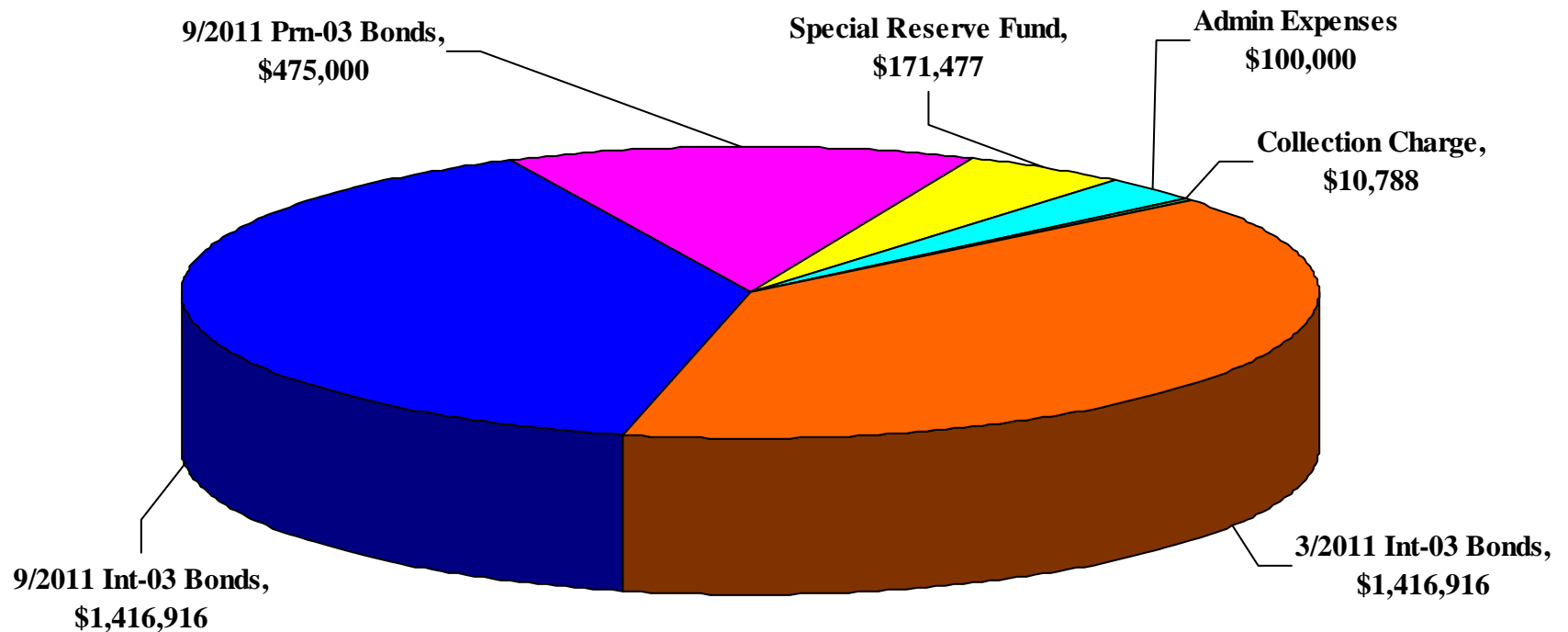
Improvement Area No. 2002-1 of Community Facilities District No. 90-2 Fiscal Year 2010-2011 Special Tax Requirement

FUND BALANCES AS OF 6/30/2010		\$1,796,301
SPECIAL TAX FUND	\$1,796,301	
INTEREST ACCOUNT	\$0	
PRINCIPAL ACCOUNT	\$0	
RESERVE FUNDS IN EXCESS OF RESERVE REQUIREMENT	\$0	
REMAINING FISCAL YEAR 2009-2010 SOURCES OF FUNDS		\$214,770
TEETER AND FINAL APPORTIONMENT	\$214,770	
REMAINING 2009-2010 OBLIGATIONS		(\$2,011,071)
SERIES 2003 BONDS		
INTEREST DUE SEPTEMBER 1, 2010	(\$1,425,191)	
PRINCIPAL DUE SEPTEMBER 1, 2010	(\$395,000)	
ADMINISTRATIVE EXPENSES	(\$100,000)	
SPECIAL RESERVE FUND (PAY AS YOU GO)	(\$90,880)	
PROJECTED SURPLUS / (DRAW ON RESERVE FUND)		\$0
FISCAL YEAR 2010-2011 OBLIGATIONS		(\$3,591,096)
SERIES 2003 BONDS		
INTEREST DUE MARCH 1, 2011	(\$1,416,916)	
INTEREST DUE SEPTEMBER 1, 2011	(\$1,416,916)	
PRINCIPAL DUE SEPTEMBER 1, 2011	(\$475,000)	
ADMINISTRATIVE EXPENSES	(\$100,000)	
COLLECTION CHARGE	(\$10,788)	
SPECIAL RESERVE FUND (PAY AS YOU GO)	(\$171,477)	
Fiscal Year 2010-2011 SPECIAL TAX REQUIREMENT		\$3,591,096

The components of the gross special tax requirement are shown graphically on the following page.

IA No. 2002-1 of Community Facilities District No. 90-2 of the Capistrano Unified School District

Fiscal Year 2010-2011 Gross Special Tax Requirement



Total Gross Special Tax Requirement = \$3,591,096

V. Method of Apportionment

Maximum Special Taxes

The amount of special taxes that IA No. 2002-1 may levy is strictly limited by the maximum special taxes set forth in the Rate and Method of Apportionment. The initial assigned special taxes for each classification of Developed Property are specified in Table 1 of Section C of the Rate and Method of Apportionment¹. These special taxes escalate by two percent each fiscal year.

Apportionment of Special Taxes

The special tax that is apportioned to each parcel is determined through the application of Section D of the Rate and Method of Apportionment. Section D apportions the special tax requirement in four steps which prioritize the order in which Developed Property, Taxable Golf Course Property, Taxable Property Owner Association Property, Taxable Public Property, and Undeveloped Property are taxed.

The first step states that the special tax shall be levied proportionately on each Assessor's Parcel of Developed Property at up to 100% of the applicable Assigned Special Tax as needed to satisfy the special tax requirement. If the special taxes raised pursuant to the first step are less than the special tax requirement, then the second step is applied. The second step states that the special tax shall be levied Proportionately on each Assessor's Parcel of Undeveloped Property at up to 100% of the Maximum Special Tax for Undeveloped Property and Non-Residential Property.

The third and fourth steps are designed to accommodate changes in land use and are intended to be used only as a last resort. Since actual land uses have not substantially deviated from the original projections, these steps are not necessary.

Application of the maximum special taxes under the first step generates special tax revenues of \$3,577,029 from Residential Property and \$14,067 from Non-Residential Property which is equal to the fiscal year 2010-2011 special tax requirement as outlined in Section IV.

The fiscal year 2010-2011 special taxes are shown for each classification of Developed Property and Undeveloped Property in the table below and graphically on the following page. The Special Tax Roll which lists the actual special tax levied against each parcel in IA No. 2002-1 of CFD No. 90-2 is included as Exhibit A.

¹ Technically, Section C states that the maximum special tax for a parcel of Developed Property is equal to the greater of (i) the "Backup Special Tax" or (ii) the Assigned Special Tax. In this report, all discussion of maximum tax rates for Developed Property and Senior Housing Property focuses on the Assigned Special Tax.

**Improvement Area No. 2002-1 of
Community Facilities District No. 90-2
Fiscal Year 2010-2011 Special Taxes**

Land Use Class	Description	FY 2010-2011 Maximum Special Tax	FY 2010-2011 Special Tax Levy
1	Residential Property (per s.f.)	\$0.7226	\$0.7226
2	Non-Residential Property (per s.f.)	\$0.1313	\$0.1313
NA	Undeveloped Property (per acre)	\$21,260.93	\$0.00

K:\CLIENTS2\CAPO.USD\CFD90_2.adm\10_11\90_2 IA2002-1 ADM.doc

IA No. 2002-1 of Community Facilities District No. 90-2 of the Capistrano Unified School District

Fiscal Year 2010-2011 Special Tax Levy
Developed Property and Non-Residential Property

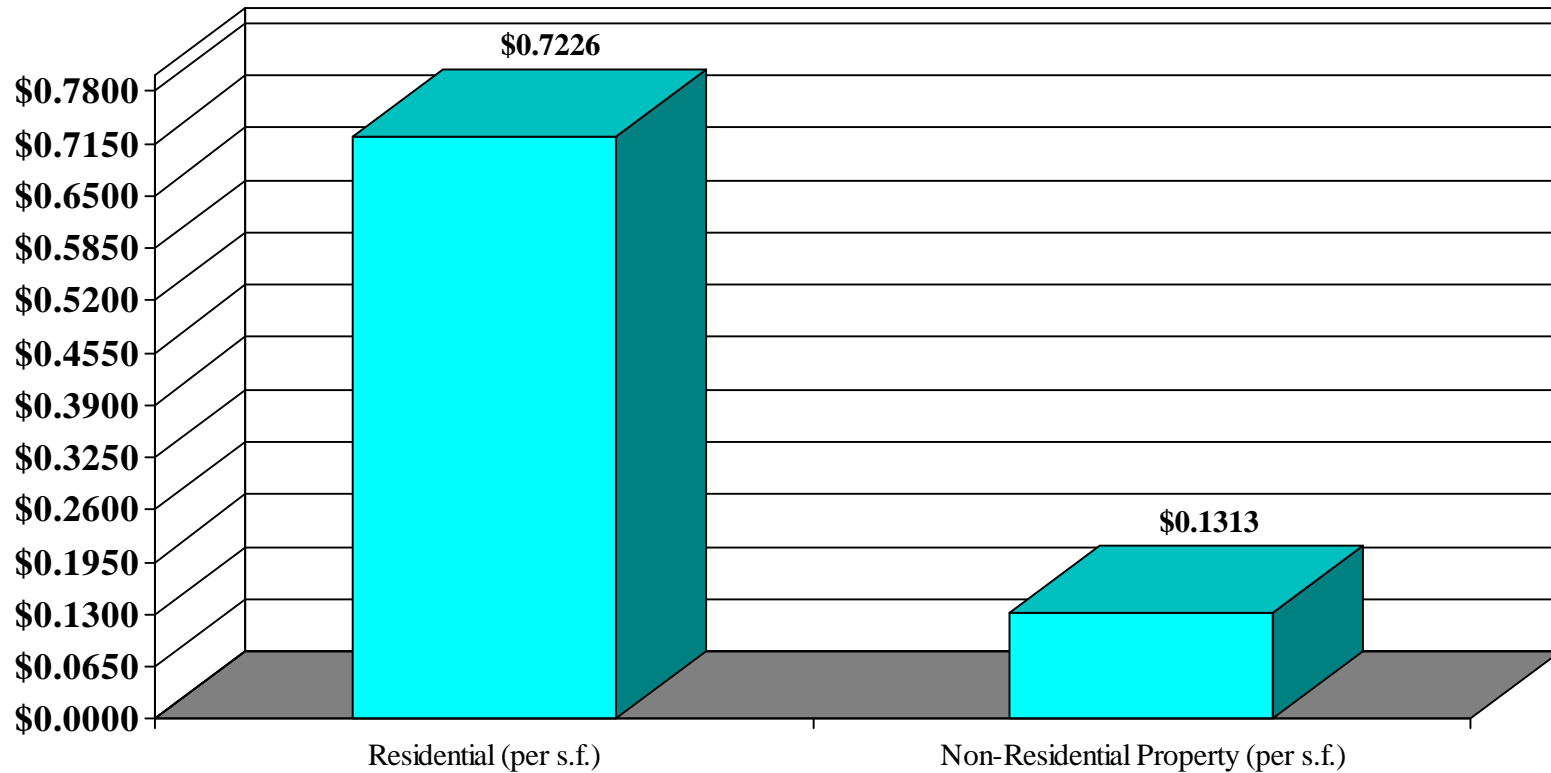


EXHIBIT A

*IA No. 2002-1 of
CFD No. 90-2 of the
Capistrano Unified School District*

*Summary of Transactions to Fund and Accounts
Series 2003
Fiscal Year 2009-2010*

**COMMUNITY FACILITIES DISTRICT NO. 90-2 IMPROVEMENT AREA NO. 2002-1
OF THE CAPISTRANO UNIFIED SCHOOL DISTRICT
SERIES 2003 SPECIAL TAX BONDS
FISCAL YEAR 2009-2010**

	SPECIAL TAX FUND	INTEREST ACCOUNT	PRINCIPAL ACCOUNT	RESERVE ACCOUNT	ADMIN EXPENSE ACCOUNT	SPECIAL RESERVE FUND	REDEMPTION ACCOUNT	ACQUISITION & CONST. ACCOUNT	SCHOOL FUND SUBACCOUNT	CITY FUND SUBACCOUNT	COST OF ISSUANCE ACCOUNT	REBATE ACCOUNT	ALTERNATIVE PENALTY ACCOUNT	ESCROW FUND	ESCROW INTEREST ACCOUNT	ESCROW RESERVE ACCOUNT	CAPITALIZED INTEREST SUBACCOUNT	TOTAL	
BEGINNING BALANCE	\$1,555,826	\$0	\$0	\$4,956,895	\$197,445	\$2,222,297	\$0	\$0	\$5,064	\$0	\$0	\$0	\$0	\$0	\$0	\$0	\$0	\$0	\$8,937,526
SOURCES OF FUNDS																			
SPECIAL TAX RECEIPTS	\$3,575,149	\$0	\$0	\$0	\$0	\$0	\$0	\$0	\$0	\$0	\$0	\$0	\$0	\$0	\$0	\$0	\$0	\$0	\$3,575,149
INVESTMENT AGREEMENT EARNINGS	\$0	\$0	\$0	\$0	\$0	\$0	\$0	\$0	\$0	\$0	\$0	\$0	\$0	\$0	\$0	\$0	\$0	\$0	\$0
OTHER INVESTMENT EARNINGS	\$0	\$0	\$0	\$0	\$0	\$0	\$0	\$0	\$0	\$0	\$0	\$0	\$0	\$0	\$0	\$0	\$0	\$0	\$0
MISCELLANEOUS	\$0	\$0	\$0	\$0	\$0	\$0	\$0	\$0	\$0	\$0	\$0	\$0	\$0	\$0	\$0	\$0	\$0	\$0	\$0
TOTAL SOURCES	\$3,575,149	\$0	\$0	\$0	\$0	\$0	\$0	\$0	\$0	\$0	\$0	\$0	\$0	\$0	\$0	\$0	\$0	\$0	\$3,575,149
USES OF FUNDS																			
INTEREST PAYMENTS	\$0	(\$2,856,426)	\$0	\$0	\$0	\$0	\$0	\$0	\$0	\$0	\$0	\$0	\$0	\$0	\$0	\$0	\$0	\$0	(\$2,856,426)
PRINCIPAL PAYMENTS	\$0	\$0	(\$320,000)	\$0	\$0	\$0	\$0	\$0	\$0	\$0	\$0	\$0	\$0	\$0	\$0	\$0	\$0	\$0	(\$320,000)
PUBLIC FACILITIES	\$0	\$0	\$0	\$0	\$0	(\$217,609)	\$0	\$0	\$0	\$0	\$0	\$0	\$0	\$0	\$0	\$0	\$0	\$0	(\$217,609)
PROFESSIONAL SERVICES	\$0	\$0	\$0	\$0	(\$206,290)	(\$72,870)	\$0	\$0	\$0	\$0	\$0	\$0	\$0	\$0	\$0	\$0	\$0	\$0	(\$279,159)
MISCELLANEOUS	\$0	\$0	\$0	\$0	\$0	(\$471,911)	\$0	\$0	\$0	\$0	\$0	\$0	\$0	\$0	\$0	\$0	\$0	\$0	(\$471,911)
TOTAL USES	\$0	(\$2,856,426)	(\$320,000)	\$0	(\$206,290)	(\$762,390)	\$0	\$0	\$0	\$0	\$0	\$0	\$0	\$0	\$0	\$0	\$0	\$0	(\$4,145,105)
TRANSFERS	(\$3,334,674)	\$2,856,426	\$320,000	(\$658)	\$100,000	\$58,906	\$0	\$0	\$0	\$0	\$0	\$0	\$0	\$0	\$0	\$0	\$0	\$0	\$0
ENDING BALANCE	\$1,796,301	\$0	\$0	\$4,956,238	\$91,155	\$1,518,813	\$0	\$0	\$5,064	\$0	\$0	\$0	\$0	\$0	\$0	\$0	\$0	\$0	\$8,367,570

**COMMUNITY FACILITIES DISTRICT NO. 90-2 IMPROVEMENT AREA NO. 2002-1
OF THE CAPISTRANO UNIFIED SCHOOL DISTRICT
SERIES 2003 SPECIAL TAX BONDS
July 2009**

	SPECIAL TAX FUND	INTEREST ACCOUNT	PRINCIPAL ACCOUNT	RESERVE ACCOUNT	ADMIN EXPENSE ACCOUNT	SPECIAL RESERVE FUND	REDEMPTION ACCOUNT	ACQUISITION & CONSTRUCTION ACCOUNT	SCHOOL FUND SUBACCOUNT	CITY FUND SUBACCOUNT	COST OF ISSUANCE ACCOUNT	REBATE ACCOUNT	ALTERNATIVE PENALTY ACCOUNT	ESCROW FUND	ESCROW INTEREST ACCOUNT	ESCROW RESERVE ACCOUNT	CAPITALIZED INTEREST SUBACCOUNT	TOTAL	
BEGINNING BALANCE	\$1,555,826	\$0	\$0	\$4,956,895	\$197,445	\$2,222,297	\$0	\$0	\$5,064	\$0	\$0	\$0	\$0	\$0	\$0	\$0	\$0	\$0	\$8,937,526
SOURCES OF FUNDS																			
SPECIAL TAX RECEIPTS	\$0	\$0	\$0	\$0	\$0	\$0	\$0	\$0	\$0	\$0	\$0	\$0	\$0	\$0	\$0	\$0	\$0	\$0	\$0
INVESTMENT AGREEMENT EARNINGS	\$0	\$0	\$0	\$0	\$0	\$0	\$0	\$0	\$0	\$0	\$0	\$0	\$0	\$0	\$0	\$0	\$0	\$0	\$0
OTHER INVESTMENT EARNINGS	\$0	\$0	\$0	\$0	\$0	\$0	\$0	\$0	\$0	\$0	\$0	\$0	\$0	\$0	\$0	\$0	\$0	\$0	\$0
MISCELLANEOUS	\$0	\$0	\$0	\$0	\$0	\$0	\$0	\$0	\$0	\$0	\$0	\$0	\$0	\$0	\$0	\$0	\$0	\$0	\$0
TOTAL SOURCES	\$0	\$0	\$0	\$0	\$0	\$0	\$0	\$0	\$0	\$0	\$0	\$0	\$0	\$0	\$0	\$0	\$0	\$0	\$0
USES OF FUNDS																			
INTEREST PAYMENTS	\$0	\$0	\$0	\$0	\$0	\$0	\$0	\$0	\$0	\$0	\$0	\$0	\$0	\$0	\$0	\$0	\$0	\$0	\$0
PRINCIPAL PAYMENTS	\$0	\$0	\$0	\$0	\$0	\$0	\$0	\$0	\$0	\$0	\$0	\$0	\$0	\$0	\$0	\$0	\$0	\$0	\$0
PUBLIC FACILITIES	\$0	\$0	\$0	\$0	\$0	(\$27,140)	\$0	\$0	\$0	\$0	\$0	\$0	\$0	\$0	\$0	\$0	\$0	\$0	(\$27,140)
PROFESSIONAL SERVICES	\$0	\$0	\$0	\$0	\$0	\$0	\$0	\$0	\$0	\$0	\$0	\$0	\$0	\$0	\$0	\$0	\$0	\$0	\$0
MISCELLANEOUS	\$0	\$0	\$0	\$0	\$0	\$0	\$0	\$0	\$0	\$0	\$0	\$0	\$0	\$0	\$0	\$0	\$0	\$0	\$0
TOTAL USES	\$0	\$0	\$0	\$0	\$0	(\$27,140)	\$0	\$0	\$0	\$0	\$0	\$0	\$0	\$0	\$0	\$0	\$0	\$0	(\$27,140)
TRANSFERS	\$0	\$0	\$0	\$0	\$0	\$0	\$0	\$0	\$0	\$0	\$0	\$0	\$0	\$0	\$0	\$0	\$0	\$0	\$0
ENDING BALANCE	\$1,555,826	\$0	\$0	\$4,956,895	\$197,445	\$2,195,157	\$0	\$0	\$5,064	\$0	\$0	\$0	\$0	\$0	\$0	\$0	\$0	\$0	\$8,910,386

Reserve Requirement: \$4,956,238

PRINTED: 08/04/10
17:12

PAGE:1

**COMMUNITY FACILITIES DISTRICT NO. 90-2 IMPROVEMENT AREA NO. 2002-1
OF THE CAPISTRANO UNIFIED SCHOOL DISTRICT
SERIES 2003 SPECIAL TAX BONDS
August 2009**

	SPECIAL TAX FUND	INTEREST ACCOUNT	PRINCIPAL ACCOUNT	RESERVE ACCOUNT	ADMIN EXPENSE ACCOUNT	SPECIAL RESERVE FUND	REDEMPTION ACCOUNT	ACQUISITION & CONSTRUCTION ACCOUNT	SCHOOL FUND SUBACCOUNT	CITY FUND SUBACCOUNT	COST OF ISSUANCE ACCOUNT	REBATE ACCOUNT	ALTERNATIVE PENALTY ACCOUNT	ESCROW FUND	ESCROW INTEREST ACCOUNT	ESCROW RESERVE ACCOUNT	CAPITALIZED INTEREST SUBACCOUNT	TOTAL
BEGINNING BALANCE	\$1,555,826	\$0	\$0	\$4,956,895	\$197,445	\$2,195,157	\$0	\$0	\$5,064	\$0	\$0	\$0	\$0	\$0	\$0	\$0	\$0	\$8,910,386
SOURCES OF FUNDS																		
SPECIAL TAX RECEIPTS	\$353,657	\$0	\$0	\$0	\$0	\$0	\$0	\$0	\$0	\$0	\$0	\$0	\$0	\$0	\$0	\$0	\$0	\$353,657
INVESTMENT AGREEMENT EARNINGS	\$0	\$0	\$0	\$0	\$0	\$0	\$0	\$0	\$0	\$0	\$0	\$0	\$0	\$0	\$0	\$0	\$0	\$0
OTHER INVESTMENT EARNINGS	\$0	\$0	\$0	\$0	\$0	\$0	\$0	\$0	\$0	\$0	\$0	\$0	\$0	\$0	\$0	\$0	\$0	\$0
MISCELLANEOUS	\$0	\$0	\$0	\$0	\$0	\$0	\$0	\$0	\$0	\$0	\$0	\$0	\$0	\$0	\$0	\$0	\$0	\$0
TOTAL SOURCES	\$353,657	\$0	\$0	\$0	\$0	\$0	\$0	\$0	\$0	\$0	\$0	\$0	\$0	\$0	\$0	\$0	\$0	\$353,657
USES OF FUNDS																		
INTEREST PAYMENTS	\$0	\$0	\$0	\$0	\$0	\$0	\$0	\$0	\$0	\$0	\$0	\$0	\$0	\$0	\$0	\$0	\$0	\$0
PRINCIPAL PAYMENTS	\$0	\$0	\$0	\$0	\$0	\$0	\$0	\$0	\$0	\$0	\$0	\$0	\$0	\$0	\$0	\$0	\$0	\$0
PUBLIC FACILITIES	\$0	\$0	\$0	\$0	\$0	(\$122,164)	\$0	\$0	\$0	\$0	\$0	\$0	\$0	\$0	\$0	\$0	\$0	(\$122,164)
PROFESSIONAL SERVICES	\$0	\$0	\$0	\$0	(\$194,549)	\$0	\$0	\$0	\$0	\$0	\$0	\$0	\$0	\$0	\$0	\$0	\$0	(\$194,549)
MISCELLANEOUS	\$0	\$0	\$0	\$0	\$0	\$0	\$0	\$0	\$0	\$0	\$0	\$0	\$0	\$0	\$0	\$0	\$0	\$0
TOTAL USES	\$0	\$0	\$0	\$0	(\$194,549)	(\$122,164)	\$0	\$0	\$0	\$0	\$0	\$0	\$0	\$0	\$0	\$0	\$0	(\$316,712)
TRANSFERS	\$0	\$0	\$0	\$0	\$0	\$0	\$0	\$0	\$0	\$0	\$0	\$0	\$0	\$0	\$0	\$0	\$0	\$0
ENDING BALANCE	\$1,909,483	\$0	\$0	\$4,956,895	\$2,896	\$2,072,993	\$0	\$0	\$5,064	\$0	\$0	\$0	\$0	\$0	\$0	\$0	\$0	\$8,947,331

Reserve Requirement: \$4,956,238

PRINTED: 08/04/10
17:12

PAGE:2

**COMMUNITY FACILITIES DISTRICT NO. 90-2 IMPROVEMENT AREA NO. 2002-1
OF THE CAPISTRANO UNIFIED SCHOOL DISTRICT
SERIES 2003 SPECIAL TAX BONDS
September 2009**

	SPECIAL TAX FUND	INTEREST ACCOUNT	PRINCIPAL ACCOUNT	RESERVE ACCOUNT	ADMIN EXPENSE ACCOUNT	SPECIAL RESERVE FUND	REDEMPTION ACCOUNT	ACQUISITION & CONSTRUCTION ACCOUNT	SCHOOL FUND SUBACCOUNT	CITY FUND SUBACCOUNT	COST OF ISSUANCE ACCOUNT	REBATE ACCOUNT	ALTERNATIVE PENALTY ACCOUNT	ESCROW FUND	ESCROW INTEREST ACCOUNT	ESCROW RESERVE ACCOUNT	CAPITALIZED INTEREST SUBACCOUNT	TOTAL	
BEGINNING BALANCE	\$1,909,483	\$0	\$0	\$4,956,895	\$2,896	\$2,072,993	\$0	\$0	\$5,064	\$0	\$0	\$0	\$0	\$0	\$0	\$0	\$0	\$8,947,331	
SOURCES OF FUNDS																			
SPECIAL TAX RECEIPTS	\$0	\$0	\$0	\$0	\$0	\$0	\$0	\$0	\$0	\$0	\$0	\$0	\$0	\$0	\$0	\$0	\$0	\$0	
INVESTMENT AGREEMENT EARNINGS	\$0	\$0	\$0	\$0	\$0	\$0	\$0	\$0	\$0	\$0	\$0	\$0	\$0	\$0	\$0	\$0	\$0	\$0	
OTHER INVESTMENT EARNINGS	\$0	\$0	\$0	\$0	\$0	\$0	\$0	\$0	\$0	\$0	\$0	\$0	\$0	\$0	\$0	\$0	\$0	\$0	
MISCELLANEOUS	\$0	\$0	\$0	\$0	\$0	\$0	\$0	\$0	\$0	\$0	\$0	\$0	\$0	\$0	\$0	\$0	\$0	\$0	
TOTAL SOURCES	\$0	\$0	\$0	\$0	\$0	\$0	\$0	\$0	\$0	\$0	\$0	\$0	\$0	\$0	\$0	\$0	\$0	\$0	
USES OF FUNDS																			
INTEREST PAYMENTS	\$0	(\$1,431,235)	\$0	\$0	\$0	\$0	\$0	\$0	\$0	\$0	\$0	\$0	\$0	\$0	\$0	\$0	\$0	\$0	(\$1,431,235)
PRINCIPAL PAYMENTS	\$0	\$0	(\$320,000)	\$0	\$0	\$0	\$0	\$0	\$0	\$0	\$0	\$0	\$0	\$0	\$0	\$0	\$0	\$0	(\$320,000)
PUBLIC FACILITIES	\$0	\$0	\$0	\$0	\$0	(\$33,702)	\$0	\$0	\$0	\$0	\$0	\$0	\$0	\$0	\$0	\$0	\$0	\$0	(\$33,702)
PROFESSIONAL SERVICES	\$0	\$0	\$0	\$0	\$0	\$0	\$0	\$0	\$0	\$0	\$0	\$0	\$0	\$0	\$0	\$0	\$0	\$0	
MISCELLANEOUS	\$0	\$0	\$0	\$0	\$0	\$0	\$0	\$0	\$0	\$0	\$0	\$0	\$0	\$0	\$0	\$0	\$0	\$0	
TOTAL USES	\$0	(\$1,431,235)	(\$320,000)	\$0	\$0	(\$33,702)	\$0	\$0	\$0	\$0	\$0	\$0	\$0	\$0	\$0	\$0	\$0	\$0	(\$1,784,937)
TRANSFERS	(\$1,909,483)	\$1,431,235	\$320,000	(\$658)	\$0	\$158,906	\$0	\$0	\$0	\$0	\$0	\$0	\$0	\$0	\$0	\$0	\$0	\$0	
ENDING BALANCE	\$0	\$0	\$0	\$4,956,238	\$2,896	\$2,198,197	\$0	\$0	\$5,064	\$0	\$0	\$0	\$0	\$0	\$0	\$0	\$0	\$7,162,394	

Reserve Requirement: \$4,956,238

PRINTED: 08/04/10
17:12

PAGE:3

**COMMUNITY FACILITIES DISTRICT NO. 90-2 IMPROVEMENT AREA NO. 2002-1
OF THE CAPISTRANO UNIFIED SCHOOL DISTRICT
SERIES 2003 SPECIAL TAX BONDS
October 2009**

	SPECIAL TAX FUND	INTEREST ACCOUNT	PRINCIPAL ACCOUNT	RESERVE ACCOUNT	ADMIN EXPENSE ACCOUNT	SPECIAL RESERVE FUND	REDEMPTION ACCOUNT	ACQUISITION & CONSTRUCTION ACCOUNT	SCHOOL FUND SUBACCOUNT	CITY FUND SUBACCOUNT	COST OF ISSUANCE ACCOUNT	REBATE ACCOUNT	ALTERNATIVE PENALTY ACCOUNT	ESCROW FUND	ESCROW INTEREST ACCOUNT	ESCROW RESERVE ACCOUNT	CAPITALIZED INTEREST SUBACCOUNT	TOTAL	
BEGINNING BALANCE	\$0	\$0	\$0	\$4,956,238	\$2,896	\$2,198,197	\$0	\$0	\$5,064	\$0	\$0	\$0	\$0	\$0	\$0	\$0	\$0	\$0	\$7,162,394
SOURCES OF FUNDS																			
SPECIAL TAX RECEIPTS	\$0	\$0	\$0	\$0	\$0	\$0	\$0	\$0	\$0	\$0	\$0	\$0	\$0	\$0	\$0	\$0	\$0	\$0	\$0
INVESTMENT AGREEMENT EARNINGS	\$0	\$0	\$0	\$0	\$0	\$0	\$0	\$0	\$0	\$0	\$0	\$0	\$0	\$0	\$0	\$0	\$0	\$0	\$0
OTHER INVESTMENT EARNINGS	\$0	\$0	\$0	\$0	\$0	\$0	\$0	\$0	\$0	\$0	\$0	\$0	\$0	\$0	\$0	\$0	\$0	\$0	\$0
MISCELLANEOUS	\$0	\$0	\$0	\$0	\$0	\$0	\$0	\$0	\$0	\$0	\$0	\$0	\$0	\$0	\$0	\$0	\$0	\$0	\$0
TOTAL SOURCES	\$0	\$0	\$0	\$0	\$0	\$0	\$0	\$0	\$0	\$0	\$0	\$0	\$0	\$0	\$0	\$0	\$0	\$0	\$0
USES OF FUNDS																			
INTEREST PAYMENTS	\$0	\$0	\$0	\$0	\$0	\$0	\$0	\$0	\$0	\$0	\$0	\$0	\$0	\$0	\$0	\$0	\$0	\$0	\$0
PRINCIPAL PAYMENTS	\$0	\$0	\$0	\$0	\$0	\$0	\$0	\$0	\$0	\$0	\$0	\$0	\$0	\$0	\$0	\$0	\$0	\$0	\$0
PUBLIC FACILITIES	\$0	\$0	\$0	\$0	\$0	(\$2,750)	\$0	\$0	\$0	\$0	\$0	\$0	\$0	\$0	\$0	\$0	\$0	\$0	(\$2,750)
PROFESSIONAL SERVICES	\$0	\$0	\$0	\$0	\$0	(\$6,788)	\$0	\$0	\$0	\$0	\$0	\$0	\$0	\$0	\$0	\$0	\$0	\$0	(\$6,788)
MISCELLANEOUS	\$0	\$0	\$0	\$0	\$0	\$0	\$0	\$0	\$0	\$0	\$0	\$0	\$0	\$0	\$0	\$0	\$0	\$0	\$0
TOTAL USES	\$0	\$0	\$0	\$0	\$0	(\$9,538)	\$0	\$0	\$0	\$0	\$0	\$0	\$0	\$0	\$0	\$0	\$0	\$0	(\$9,538)
TRANSFERS	\$0	\$0	\$0	\$0	\$0	\$0	\$0	\$0	\$0	\$0	\$0	\$0	\$0	\$0	\$0	\$0	\$0	\$0	\$0
ENDING BALANCE	\$0	\$0	\$0	\$4,956,238	\$2,896	\$2,188,659	\$0	\$0	\$5,064	\$0	\$0	\$0	\$0	\$0	\$0	\$0	\$0	\$0	\$7,152,857

Reserve Requirement: \$4,956,238

PRINTED: 08/04/10
17:12

PAGE:4

**COMMUNITY FACILITIES DISTRICT NO. 90-2 IMPROVEMENT AREA NO. 2002-1
OF THE CAPISTRANO UNIFIED SCHOOL DISTRICT
SERIES 2003 SPECIAL TAX BONDS
November 2009**

	SPECIAL TAX FUND	INTEREST ACCOUNT	PRINCIPAL ACCOUNT	RESERVE ACCOUNT	ADMIN EXPENSE ACCOUNT	SPECIAL RESERVE FUND	REDEMPTION ACCOUNT	ACQUISITION & CONSTRUCTION ACCOUNT	SCHOOL FUND SUBACCOUNT	CITY FUND SUBACCOUNT	COST OF ISSUANCE ACCOUNT	REBATE ACCOUNT	ALTERNATIVE PENALTY ACCOUNT	ESCROW FUND	ESCROW INTEREST ACCOUNT	ESCROW RESERVE ACCOUNT	CAPITALIZED INTEREST SUBACCOUNT	TOTAL	
BEGINNING BALANCE	\$0	\$0	\$0	\$4,956,238	\$2,896	\$2,188,659	\$0	\$0	\$5,064	\$0	\$0	\$0	\$0	\$0	\$0	\$0	\$0	\$0	\$7,152,857
SOURCES OF FUNDS																			
SPECIAL TAX RECEIPTS	\$0	\$0	\$0	\$0	\$0	\$0	\$0	\$0	\$0	\$0	\$0	\$0	\$0	\$0	\$0	\$0	\$0	\$0	\$0
INVESTMENT AGREEMENT EARNINGS	\$0	\$0	\$0	\$0	\$0	\$0	\$0	\$0	\$0	\$0	\$0	\$0	\$0	\$0	\$0	\$0	\$0	\$0	\$0
OTHER INVESTMENT EARNINGS	\$0	\$0	\$0	\$0	\$0	\$0	\$0	\$0	\$0	\$0	\$0	\$0	\$0	\$0	\$0	\$0	\$0	\$0	\$0
<u>MISCELLANEOUS</u>	<u>\$0</u>	<u>\$0</u>	<u>\$0</u>	<u>\$0</u>	<u>\$0</u>	<u>\$0</u>	<u>\$0</u>	<u>\$0</u>	<u>\$0</u>	<u>\$0</u>	<u>\$0</u>	<u>\$0</u>	<u>\$0</u>	<u>\$0</u>	<u>\$0</u>	<u>\$0</u>	<u>\$0</u>	<u>\$0</u>	<u>\$0</u>
TOTAL SOURCES	\$0	\$0	\$0	\$0	\$0	\$0	\$0	\$0	\$0	\$0	\$0	\$0	\$0	\$0	\$0	\$0	\$0	\$0	\$0
USES OF FUNDS																			
INTEREST PAYMENTS	\$0	\$0	\$0	\$0	\$0	\$0	\$0	\$0	\$0	\$0	\$0	\$0	\$0	\$0	\$0	\$0	\$0	\$0	\$0
PRINCIPAL PAYMENTS	\$0	\$0	\$0	\$0	\$0	\$0	\$0	\$0	\$0	\$0	\$0	\$0	\$0	\$0	\$0	\$0	\$0	\$0	\$0
PUBLIC FACILITIES	\$0	\$0	\$0	\$0	\$0	\$0	\$0	\$0	\$0	\$0	\$0	\$0	\$0	\$0	\$0	\$0	\$0	\$0	\$0
PROFESSIONAL SERVICES	\$0	\$0	\$0	\$0	\$0	(\$15,355)	\$0	\$0	\$0	\$0	\$0	\$0	\$0	\$0	\$0	\$0	\$0	\$0	(\$15,355)
<u>MISCELLANEOUS</u>	<u>\$0</u>	<u>\$0</u>	<u>\$0</u>	<u>\$0</u>	<u>\$0</u>	<u>\$0</u>	<u>\$0</u>	<u>\$0</u>	<u>\$0</u>	<u>\$0</u>	<u>\$0</u>	<u>\$0</u>	<u>\$0</u>	<u>\$0</u>	<u>\$0</u>	<u>\$0</u>	<u>\$0</u>	<u>\$0</u>	<u>\$0</u>
TOTAL USES	\$0	\$0	\$0	\$0	\$0	(\$15,355)	\$0	\$0	\$0	\$0	\$0	\$0	\$0	\$0	\$0	\$0	\$0	\$0	(\$15,355)
TRANSFERS	\$0	\$0	\$0	\$0	\$100,000	(\$100,000)	\$0	\$0	\$0	\$0	\$0	\$0	\$0	\$0	\$0	\$0	\$0	\$0	\$0
ENDING BALANCE	\$0	\$0	\$0	\$4,956,238	\$102,896	\$2,073,305	\$0	\$0	\$5,064	\$0	\$0	\$0	\$0	\$0	\$0	\$0	\$0	\$0	\$7,137,502

Reserve Requirement: \$4,956,238

PRINTED: 08/04/10
17:12

PAGE:5

**COMMUNITY FACILITIES DISTRICT NO. 90-2 IMPROVEMENT AREA NO. 2002-1
OF THE CAPISTRANO UNIFIED SCHOOL DISTRICT
SERIES 2003 SPECIAL TAX BONDS
December 2009**

	SPECIAL TAX FUND	INTEREST ACCOUNT	PRINCIPAL ACCOUNT	RESERVE ACCOUNT	ADMIN EXPENSE ACCOUNT	SPECIAL RESERVE FUND	REDEMPTION ACCOUNT	ACQUISITION & CONSTRUCTION ACCOUNT	SCHOOL FUND SUBACCOUNT	CITY FUND SUBACCOUNT	COST OF ISSUANCE ACCOUNT	REBATE ACCOUNT	ALTERNATIVE PENALTY ACCOUNT	ESCROW FUND	ESCROW INTEREST ACCOUNT	ESCROW RESERVE ACCOUNT	CAPITALIZED INTEREST SUBACCOUNT	TOTAL	
BEGINNING BALANCE	\$0	\$0	\$0	\$4,956,238	\$102,896	\$2,073,305	\$0	\$0	\$5,064	\$0	\$0	\$0	\$0	\$0	\$0	\$0	\$0	\$0	\$7,137,502
SOURCES OF FUNDS																			
SPECIAL TAX RECEIPTS	\$457,698	\$0	\$0	\$0	\$0	\$0	\$0	\$0	\$0	\$0	\$0	\$0	\$0	\$0	\$0	\$0	\$0	\$0	\$457,698
INVESTMENT AGREEMENT EARNINGS	\$0	\$0	\$0	\$0	\$0	\$0	\$0	\$0	\$0	\$0	\$0	\$0	\$0	\$0	\$0	\$0	\$0	\$0	\$0
OTHER INVESTMENT EARNINGS	\$0	\$0	\$0	\$0	\$0	\$0	\$0	\$0	\$0	\$0	\$0	\$0	\$0	\$0	\$0	\$0	\$0	\$0	\$0
<u>MISCELLANEOUS</u>	<u>\$0</u>	<u>\$0</u>	<u>\$0</u>	<u>\$0</u>	<u>\$0</u>	<u>\$0</u>	<u>\$0</u>	<u>\$0</u>	<u>\$0</u>	<u>\$0</u>	<u>\$0</u>	<u>\$0</u>	<u>\$0</u>	<u>\$0</u>	<u>\$0</u>	<u>\$0</u>	<u>\$0</u>	<u>\$0</u>	<u>\$0</u>
TOTAL SOURCES	\$457,698	\$0	\$0	\$0	\$0	\$0	\$0	\$0	\$0	\$0	\$0	\$0	\$0	\$0	\$0	\$0	\$0	\$0	\$457,698
USES OF FUNDS																			
INTEREST PAYMENTS	\$0	\$0	\$0	\$0	\$0	\$0	\$0	\$0	\$0	\$0	\$0	\$0	\$0	\$0	\$0	\$0	\$0	\$0	\$0
PRINCIPAL PAYMENTS	\$0	\$0	\$0	\$0	\$0	\$0	\$0	\$0	\$0	\$0	\$0	\$0	\$0	\$0	\$0	\$0	\$0	\$0	\$0
PUBLIC FACILITIES	\$0	\$0	\$0	\$0	\$0	(\$2,697)	\$0	\$0	\$0	\$0	\$0	\$0	\$0	\$0	\$0	\$0	\$0	\$0	(\$2,697)
PROFESSIONAL SERVICES	\$0	\$0	\$0	\$0	(\$2,401)	\$0	\$0	\$0	\$0	\$0	\$0	\$0	\$0	\$0	\$0	\$0	\$0	\$0	(\$2,401)
<u>MISCELLANEOUS</u>	<u>\$0</u>	<u>\$0</u>	<u>\$0</u>	<u>\$0</u>	<u>\$0</u>	<u>(\$238,140)</u>	<u>\$0</u>	<u>\$0</u>	<u>\$0</u>	<u>\$0</u>	<u>\$0</u>	<u>\$0</u>	<u>\$0</u>	<u>\$0</u>	<u>\$0</u>	<u>\$0</u>	<u>\$0</u>	<u>\$0</u>	<u>(\$238,140)</u>
TOTAL USES	\$0	\$0	\$0	\$0	(\$2,401)	(\$240,837)	\$0	\$0	\$0	\$0	\$0	\$0	\$0	\$0	\$0	\$0	\$0	\$0	(\$243,238)
TRANSFERS	\$0	\$0	\$0	\$0	\$0	\$0	\$0	\$0	\$0	\$0	\$0	\$0	\$0	\$0	\$0	\$0	\$0	\$0	\$0
ENDING BALANCE	\$457,698	\$0	\$0	\$4,956,238	\$100,496	\$1,832,468	\$0	\$0	\$5,064	\$0	\$0	\$0	\$0	\$0	\$0	\$0	\$0	\$0	\$7,351,963

Reserve Requirement: \$4,956,238

PRINTED: 08/04/10
17:12

PAGE:6

**COMMUNITY FACILITIES DISTRICT NO. 90-2 IMPROVEMENT AREA NO. 2002-1
OF THE CAPISTRANO UNIFIED SCHOOL DISTRICT
SERIES 2003 SPECIAL TAX BONDS
January 2010**

	SPECIAL TAX FUND	INTEREST ACCOUNT	PRINCIPAL ACCOUNT	RESERVE ACCOUNT	ADMIN EXPENSE ACCOUNT	SPECIAL RESERVE FUND	REDEMPTION ACCOUNT	ACQUISITION & CONSTRUCTION ACCOUNT	SCHOOL FUND SUBACCOUNT	CITY FUND SUBACCOUNT	COST OF ISSUANCE ACCOUNT	REBATE ACCOUNT	ALTERNATIVE PENALTY ACCOUNT	ESCROW FUND	ESCROW INTEREST ACCOUNT	ESCROW RESERVE ACCOUNT	CAPITALIZED INTEREST SUBACCOUNT	TOTAL	
BEGINNING BALANCE	\$457,698	\$0	\$0	\$4,956,238	\$100,496	\$1,832,468	\$0	\$0	\$5,064	\$0	\$0	\$0	\$0	\$0	\$0	\$0	\$0	\$0	\$7,351,963
SOURCES OF FUNDS																			
SPECIAL TAX RECEIPTS	\$1,169,967	\$0	\$0	\$0	\$0	\$0	\$0	\$0	\$0	\$0	\$0	\$0	\$0	\$0	\$0	\$0	\$0	\$0	\$1,169,967
INVESTMENT AGREEMENT EARNINGS	\$0	\$0	\$0	\$0	\$0	\$0	\$0	\$0	\$0	\$0	\$0	\$0	\$0	\$0	\$0	\$0	\$0	\$0	\$0
OTHER INVESTMENT EARNINGS	\$0	\$0	\$0	\$0	\$0	\$0	\$0	\$0	\$0	\$0	\$0	\$0	\$0	\$0	\$0	\$0	\$0	\$0	\$0
MISCELLANEOUS	\$0	\$0	\$0	\$0	\$0	\$0	\$0	\$0	\$0	\$0	\$0	\$0	\$0	\$0	\$0	\$0	\$0	\$0	\$0
TOTAL SOURCES	\$1,169,967	\$0	\$0	\$0	\$0	\$0	\$0	\$0	\$0	\$0	\$0	\$0	\$0	\$0	\$0	\$0	\$0	\$0	\$1,169,967
USES OF FUNDS																			
INTEREST PAYMENTS	\$0	\$0	\$0	\$0	\$0	\$0	\$0	\$0	\$0	\$0	\$0	\$0	\$0	\$0	\$0	\$0	\$0	\$0	\$0
PRINCIPAL PAYMENTS	\$0	\$0	\$0	\$0	\$0	\$0	\$0	\$0	\$0	\$0	\$0	\$0	\$0	\$0	\$0	\$0	\$0	\$0	\$0
PUBLIC FACILITIES	\$0	\$0	\$0	\$0	\$0	\$0	\$0	\$0	\$0	\$0	\$0	\$0	\$0	\$0	\$0	\$0	\$0	\$0	\$0
PROFESSIONAL SERVICES	\$0	\$0	\$0	\$0	(\$4,500)	\$0	\$0	\$0	\$0	\$0	\$0	\$0	\$0	\$0	\$0	\$0	\$0	\$0	(\$4,500)
MISCELLANEOUS	\$0	\$0	\$0	\$0	\$0	\$0	\$0	\$0	\$0	\$0	\$0	\$0	\$0	\$0	\$0	\$0	\$0	\$0	\$0
TOTAL USES	\$0	\$0	\$0	\$0	(\$4,500)	\$0	\$0	\$0	\$0	\$0	\$0	\$0	\$0	\$0	\$0	\$0	\$0	\$0	(\$4,500)
TRANSFERS	\$0	\$0	\$0	\$0	\$0	\$0	\$0	\$0	\$0	\$0	\$0	\$0	\$0	\$0	\$0	\$0	\$0	\$0	\$0
ENDING BALANCE	\$1,627,665	\$0	\$0	\$4,956,238	\$95,996	\$1,832,468	\$0	\$0	\$5,064	\$0	\$0	\$0	\$0	\$0	\$0	\$0	\$0	\$0	\$8,517,430

Reserve Requirement: \$4,956,238

PRINTED: 08/04/10
17:12

PAGE:7

**COMMUNITY FACILITIES DISTRICT NO. 90-2 IMPROVEMENT AREA NO. 2002-1
OF THE CAPISTRANO UNIFIED SCHOOL DISTRICT
SERIES 2003 SPECIAL TAX BONDS
February 2010**

	SPECIAL TAX FUND	INTEREST ACCOUNT	PRINCIPAL ACCOUNT	RESERVE ACCOUNT	ADMIN EXPENSE ACCOUNT	SPECIAL RESERVE FUND	REDEMPTION ACCOUNT	ACQUISITION & CONSTRUCTION ACCOUNT	SCHOOL FUND SUBACCOUNT	CITY FUND SUBACCOUNT	COST OF ISSUANCE ACCOUNT	REBATE ACCOUNT	ALTERNATIVE PENALTY ACCOUNT	ESCROW FUND	ESCROW INTEREST ACCOUNT	ESCROW RESERVE ACCOUNT	CAPITALIZED INTEREST SUBACCOUNT	TOTAL	
BEGINNING BALANCE	\$1,627,665	\$0	\$0	\$4,956,238	\$95,996	\$1,832,468	\$0	\$0	\$5,064	\$0	\$0	\$0	\$0	\$0	\$0	\$0	\$0	\$0	\$8,517,430
SOURCES OF FUNDS																			
SPECIAL TAX RECEIPTS	\$0	\$0	\$0	\$0	\$0	\$0	\$0	\$0	\$0	\$0	\$0	\$0	\$0	\$0	\$0	\$0	\$0	\$0	\$0
INVESTMENT AGREEMENT EARNINGS	\$0	\$0	\$0	\$0	\$0	\$0	\$0	\$0	\$0	\$0	\$0	\$0	\$0	\$0	\$0	\$0	\$0	\$0	\$0
OTHER INVESTMENT EARNINGS	\$0	\$0	\$0	\$0	\$0	\$0	\$0	\$0	\$0	\$0	\$0	\$0	\$0	\$0	\$0	\$0	\$0	\$0	\$0
<u>MISCELLANEOUS</u>	<u>\$0</u>	<u>\$0</u>	<u>\$0</u>	<u>\$0</u>	<u>\$0</u>	<u>\$0</u>	<u>\$0</u>	<u>\$0</u>	<u>\$0</u>	<u>\$0</u>	<u>\$0</u>	<u>\$0</u>	<u>\$0</u>	<u>\$0</u>	<u>\$0</u>	<u>\$0</u>	<u>\$0</u>	<u>\$0</u>	<u>\$0</u>
TOTAL SOURCES	\$0	\$0	\$0	\$0	\$0	\$0	\$0	\$0	\$0	\$0	\$0	\$0	\$0	\$0	\$0	\$0	\$0	\$0	\$0
USES OF FUNDS																			
INTEREST PAYMENTS	\$0	\$0	\$0	\$0	\$0	\$0	\$0	\$0	\$0	\$0	\$0	\$0	\$0	\$0	\$0	\$0	\$0	\$0	\$0
PRINCIPAL PAYMENTS	\$0	\$0	\$0	\$0	\$0	\$0	\$0	\$0	\$0	\$0	\$0	\$0	\$0	\$0	\$0	\$0	\$0	\$0	\$0
PUBLIC FACILITIES	\$0	\$0	\$0	\$0	\$0	\$0	\$0	\$0	\$0	\$0	\$0	\$0	\$0	\$0	\$0	\$0	\$0	\$0	\$0
PROFESSIONAL SERVICES	\$0	\$0	\$0	\$0	\$0	\$0	\$0	\$0	\$0	\$0	\$0	\$0	\$0	\$0	\$0	\$0	\$0	\$0	\$0
<u>MISCELLANEOUS</u>	<u>\$0</u>	<u>\$0</u>	<u>\$0</u>	<u>\$0</u>	<u>\$0</u>	<u>\$0</u>	<u>\$0</u>	<u>\$0</u>	<u>\$0</u>	<u>\$0</u>	<u>\$0</u>	<u>\$0</u>	<u>\$0</u>	<u>\$0</u>	<u>\$0</u>	<u>\$0</u>	<u>\$0</u>	<u>\$0</u>	<u>\$0</u>
TOTAL USES	\$0	\$0	\$0	\$0	\$0	\$0	\$0	\$0	\$0	\$0	\$0	\$0	\$0	\$0	\$0	\$0	\$0	\$0	\$0
TRANSFERS	\$0	\$0	\$0	\$0	\$0	\$0	\$0	\$0	\$0	\$0	\$0	\$0	\$0	\$0	\$0	\$0	\$0	\$0	\$0
ENDING BALANCE	\$1,627,665	\$0	\$0	\$4,956,238	\$95,996	\$1,832,468	\$0	\$0	\$5,064	\$0	\$0	\$0	\$0	\$0	\$0	\$0	\$0	\$0	\$8,517,430

Reserve Requirement: \$4,956,238

PRINTED: 08/04/10
17:12

PAGE:8

**COMMUNITY FACILITIES DISTRICT NO. 90-2 IMPROVEMENT AREA NO. 2002-1
OF THE CAPISTRANO UNIFIED SCHOOL DISTRICT
SERIES 2003 SPECIAL TAX BONDS
March 2010**

	SPECIAL TAX FUND	INTEREST ACCOUNT	PRINCIPAL ACCOUNT	RESERVE ACCOUNT	ADMIN EXPENSE ACCOUNT	SPECIAL RESERVE FUND	REDEMPTION ACCOUNT	ACQUISITION & CONSTRUCTION ACCOUNT	SCHOOL FUND SUBACCOUNT	CITY FUND SUBACCOUNT	COST OF ISSUANCE ACCOUNT	REBATE ACCOUNT	ALTERNATIVE PENALTY ACCOUNT	ESCROW FUND	ESCROW INTEREST ACCOUNT	ESCROW RESERVE ACCOUNT	CAPITALIZED INTEREST SUBACCOUNT	TOTAL
BEGINNING BALANCE	\$1,627,665	\$0	\$0	\$4,956,238	\$95,996	\$1,832,468	\$0	\$0	\$5,064	\$0	\$0	\$0	\$0	\$0	\$0	\$0	\$0	\$8,517,430
SOURCES OF FUNDS																		
SPECIAL TAX RECEIPTS	\$186,208	\$0	\$0	\$0	\$0	\$0	\$0	\$0	\$0	\$0	\$0	\$0	\$0	\$0	\$0	\$0	\$0	\$186,208
INVESTMENT AGREEMENT EARNINGS	\$0	\$0	\$0	\$0	\$0	\$0	\$0	\$0	\$0	\$0	\$0	\$0	\$0	\$0	\$0	\$0	\$0	\$0
OTHER INVESTMENT EARNINGS	\$0	\$0	\$0	\$0	\$0	\$0	\$0	\$0	\$0	\$0	\$0	\$0	\$0	\$0	\$0	\$0	\$0	\$0
MISCELLANEOUS	\$0	\$0	\$0	\$0	\$0	\$0	\$0	\$0	\$0	\$0	\$0	\$0	\$0	\$0	\$0	\$0	\$0	\$0
TOTAL SOURCES	\$186,208	\$0	\$0	\$0	\$0	\$0	\$0	\$0	\$0	\$0	\$0	\$0	\$0	\$0	\$0	\$0	\$0	\$186,208
USES OF FUNDS																		
INTEREST PAYMENTS	\$0	(\$1,425,191)	\$0	\$0	\$0	\$0	\$0	\$0	\$0	\$0	\$0	\$0	\$0	\$0	\$0	\$0	\$0	(\$1,425,191)
PRINCIPAL PAYMENTS	\$0	\$0	\$0	\$0	\$0	\$0	\$0	\$0	\$0	\$0	\$0	\$0	\$0	\$0	\$0	\$0	\$0	\$0
PUBLIC FACILITIES	\$0	\$0	\$0	\$0	\$0	(\$29,156)	\$0	\$0	\$0	\$0	\$0	\$0	\$0	\$0	\$0	\$0	\$0	(\$29,156)
PROFESSIONAL SERVICES	\$0	\$0	\$0	\$0	(\$4,840)	(\$50,728)	\$0	\$0	\$0	\$0	\$0	\$0	\$0	\$0	\$0	\$0	\$0	(\$55,568)
MISCELLANEOUS	\$0	\$0	\$0	\$0	\$0	\$0	\$0	\$0	\$0	\$0	\$0	\$0	\$0	\$0	\$0	\$0	\$0	\$0
TOTAL USES	\$0	(\$1,425,191)	\$0	\$0	(\$4,840)	(\$79,884)	\$0	\$0	\$0	\$0	\$0	\$0	\$0	\$0	\$0	\$0	\$0	(\$1,509,915)
TRANSFERS	(\$1,425,191)	\$1,425,191	\$0	\$0	\$0	\$0	\$0	\$0	\$0	\$0	\$0	\$0	\$0	\$0	\$0	\$0	\$0	\$0
ENDING BALANCE	\$388,683	\$0	\$0	\$4,956,238	\$91,155	\$1,752,584	\$0	\$0	\$5,064	\$0	\$0	\$0	\$0	\$0	\$0	\$0	\$0	\$7,193,724

Reserve Requirement: \$4,956,238

PRINTED: 08/04/10
17:12

PAGE:9

**COMMUNITY FACILITIES DISTRICT NO. 90-2 IMPROVEMENT AREA NO. 2002-1
OF THE CAPISTRANO UNIFIED SCHOOL DISTRICT
SERIES 2003 SPECIAL TAX BONDS
April 2010**

	SPECIAL TAX FUND	INTEREST ACCOUNT	PRINCIPAL ACCOUNT	RESERVE ACCOUNT	ADMIN EXPENSE ACCOUNT	SPECIAL RESERVE FUND	REDEMPTION ACCOUNT	ACQUISITION & CONSTRUCTION ACCOUNT	SCHOOL FUND SUBACCOUNT	CITY FUND SUBACCOUNT	COST OF ISSUANCE ACCOUNT	REBATE ACCOUNT	ALTERNATIVE PENALTY ACCOUNT	ESCROW FUND	ESCROW INTEREST ACCOUNT	ESCROW RESERVE ACCOUNT	CAPITALIZED INTEREST SUBACCOUNT	TOTAL	
BEGINNING BALANCE	\$388,683	\$0	\$0	\$4,956,238	\$91,155	\$1,752,584	\$0	\$0	\$5,064	\$0	\$0	\$0	\$0	\$0	\$0	\$0	\$0	\$0	\$7,193,724
SOURCES OF FUNDS																			
SPECIAL TAX RECEIPTS	\$0	\$0	\$0	\$0	\$0	\$0	\$0	\$0	\$0	\$0	\$0	\$0	\$0	\$0	\$0	\$0	\$0	\$0	\$0
INVESTMENT AGREEMENT EARNINGS	\$0	\$0	\$0	\$0	\$0	\$0	\$0	\$0	\$0	\$0	\$0	\$0	\$0	\$0	\$0	\$0	\$0	\$0	\$0
OTHER INVESTMENT EARNINGS	\$0	\$0	\$0	\$0	\$0	\$0	\$0	\$0	\$0	\$0	\$0	\$0	\$0	\$0	\$0	\$0	\$0	\$0	\$0
<u>MISCELLANEOUS</u>	<u>\$0</u>	<u>\$0</u>	<u>\$0</u>	<u>\$0</u>	<u>\$0</u>	<u>\$0</u>	<u>\$0</u>	<u>\$0</u>	<u>\$0</u>	<u>\$0</u>	<u>\$0</u>	<u>\$0</u>	<u>\$0</u>	<u>\$0</u>	<u>\$0</u>	<u>\$0</u>	<u>\$0</u>	<u>\$0</u>	<u>\$0</u>
TOTAL SOURCES	\$0	\$0	\$0	\$0	\$0	\$0	\$0	\$0	\$0	\$0	\$0	\$0	\$0	\$0	\$0	\$0	\$0	\$0	\$0
USES OF FUNDS																			
INTEREST PAYMENTS	\$0	\$0	\$0	\$0	\$0	\$0	\$0	\$0	\$0	\$0	\$0	\$0	\$0	\$0	\$0	\$0	\$0	\$0	\$0
PRINCIPAL PAYMENTS	\$0	\$0	\$0	\$0	\$0	\$0	\$0	\$0	\$0	\$0	\$0	\$0	\$0	\$0	\$0	\$0	\$0	\$0	\$0
PUBLIC FACILITIES	\$0	\$0	\$0	\$0	\$0	\$0	\$0	\$0	\$0	\$0	\$0	\$0	\$0	\$0	\$0	\$0	\$0	\$0	\$0
PROFESSIONAL SERVICES	\$0	\$0	\$0	\$0	\$0	\$0	\$0	\$0	\$0	\$0	\$0	\$0	\$0	\$0	\$0	\$0	\$0	\$0	\$0
<u>MISCELLANEOUS</u>	<u>\$0</u>	<u>\$0</u>	<u>\$0</u>	<u>\$0</u>	<u>\$0</u>	<u>\$0</u>	<u>\$0</u>	<u>\$0</u>	<u>\$0</u>	<u>\$0</u>	<u>\$0</u>	<u>\$0</u>	<u>\$0</u>	<u>\$0</u>	<u>\$0</u>	<u>\$0</u>	<u>\$0</u>	<u>\$0</u>	<u>\$0</u>
TOTAL USES	\$0	\$0	\$0	\$0	\$0	\$0	\$0	\$0	\$0	\$0	\$0	\$0	\$0	\$0	\$0	\$0	\$0	\$0	\$0
TRANSFERS	\$0	\$0	\$0	\$0	\$0	\$0	\$0	\$0	\$0	\$0	\$0	\$0	\$0	\$0	\$0	\$0	\$0	\$0	\$0
ENDING BALANCE	\$388,683	\$0	\$0	\$4,956,238	\$91,155	\$1,752,584	\$0	\$0	\$5,064	\$0	\$0	\$0	\$0	\$0	\$0	\$0	\$0	\$0	\$7,193,724

Reserve Requirement: \$4,956,238

PRINTED: 08/04/10
17:12

PAGE:10

**COMMUNITY FACILITIES DISTRICT NO. 90-2 IMPROVEMENT AREA NO. 2002-1
OF THE CAPISTRANO UNIFIED SCHOOL DISTRICT
SERIES 2003 SPECIAL TAX BONDS
May 2010**

	SPECIAL TAX FUND	INTEREST ACCOUNT	PRINCIPAL ACCOUNT	RESERVE ACCOUNT	ADMIN EXPENSE ACCOUNT	SPECIAL RESERVE FUND	REDEMPTION ACCOUNT	ACQUISITION & CONSTRUCTION ACCOUNT	SCHOOL FUND SUBACCOUNT	CITY FUND SUBACCOUNT	COST OF ISSUANCE ACCOUNT	REBATE ACCOUNT	ALTERNATIVE PENALTY ACCOUNT	ESCROW FUND	ESCROW INTEREST ACCOUNT	ESCROW RESERVE ACCOUNT	CAPITALIZED INTEREST SUBACCOUNT	TOTAL	
BEGINNING BALANCE	\$388,683	\$0	\$0	\$4,956,238	\$91,155	\$1,752,584	\$0	\$0	\$5,064	\$0	\$0	\$0	\$0	\$0	\$0	\$0	\$0	\$0	\$7,193,724
SOURCES OF FUNDS																			
SPECIAL TAX RECEIPTS	\$1,347,849	\$0	\$0	\$0	\$0	\$0	\$0	\$0	\$0	\$0	\$0	\$0	\$0	\$0	\$0	\$0	\$0	\$0	\$1,347,849
INVESTMENT AGREEMENT EARNINGS	\$0	\$0	\$0	\$0	\$0	\$0	\$0	\$0	\$0	\$0	\$0	\$0	\$0	\$0	\$0	\$0	\$0	\$0	\$0
OTHER INVESTMENT EARNINGS	\$0	\$0	\$0	\$0	\$0	\$0	\$0	\$0	\$0	\$0	\$0	\$0	\$0	\$0	\$0	\$0	\$0	\$0	\$0
MISCELLANEOUS	\$0	\$0	\$0	\$0	\$0	\$0	\$0	\$0	\$0	\$0	\$0	\$0	\$0	\$0	\$0	\$0	\$0	\$0	\$0
TOTAL SOURCES	\$1,347,849	\$0	\$0	\$0	\$0	\$0	\$0	\$0	\$0	\$0	\$0	\$0	\$0	\$0	\$0	\$0	\$0	\$0	\$1,347,849
USES OF FUNDS																			
INTEREST PAYMENTS	\$0	\$0	\$0	\$0	\$0	\$0	\$0	\$0	\$0	\$0	\$0	\$0	\$0	\$0	\$0	\$0	\$0	\$0	\$0
PRINCIPAL PAYMENTS	\$0	\$0	\$0	\$0	\$0	\$0	\$0	\$0	\$0	\$0	\$0	\$0	\$0	\$0	\$0	\$0	\$0	\$0	\$0
PUBLIC FACILITIES	\$0	\$0	\$0	\$0	\$0	\$0	\$0	\$0	\$0	\$0	\$0	\$0	\$0	\$0	\$0	\$0	\$0	\$0	\$0
PROFESSIONAL SERVICES	\$0	\$0	\$0	\$0	\$0	\$0	\$0	\$0	\$0	\$0	\$0	\$0	\$0	\$0	\$0	\$0	\$0	\$0	\$0
MISCELLANEOUS	\$0	\$0	\$0	\$0	\$0	(\$233,772)	\$0	\$0	\$0	\$0	\$0	\$0	\$0	\$0	\$0	\$0	\$0	\$0	(\$233,772)
TOTAL USES	\$0	\$0	\$0	\$0	\$0	(\$233,772)	\$0	\$0	\$0	\$0	\$0	\$0	\$0	\$0	\$0	\$0	\$0	\$0	(\$233,772)
TRANSFERS	\$0	\$0	\$0	\$0	\$0	\$0	\$0	\$0	\$0	\$0	\$0	\$0	\$0	\$0	\$0	\$0	\$0	\$0	\$0
ENDING BALANCE	\$1,736,532	\$0	\$0	\$4,956,238	\$91,155	\$1,518,813	\$0	\$0	\$5,064	\$0	\$0	\$0	\$0	\$0	\$0	\$0	\$0	\$0	\$8,307,801

Reserve Requirement: \$4,956,238

PRINTED: 08/04/10
17:12

PAGE:11

**COMMUNITY FACILITIES DISTRICT NO. 90-2 IMPROVEMENT AREA NO. 2002-1
OF THE CAPISTRANO UNIFIED SCHOOL DISTRICT
SERIES 2003 SPECIAL TAX BONDS
June 2010**

	SPECIAL TAX FUND	INTEREST ACCOUNT	PRINCIPAL ACCOUNT	RESERVE ACCOUNT	ADMIN EXPENSE ACCOUNT	SPECIAL RESERVE FUND	REDEMPTION ACCOUNT	ACQUISITION & CONSTRUCTION ACCOUNT	SCHOOL FUND SUBACCOUNT	CITY FUND SUBACCOUNT	COST OF ISSUANCE ACCOUNT	REBATE ACCOUNT	ALTERNATIVE PENALTY ACCOUNT	ESCROW FUND	ESCROW INTEREST ACCOUNT	ESCROW RESERVE ACCOUNT	CAPITALIZED INTEREST SUBACCOUNT	TOTAL	
BEGINNING BALANCE	\$1,736,532	\$0	\$0	\$4,956,238	\$91,155	\$1,518,813	\$0	\$0	\$5,064	\$0	\$0	\$0	\$0	\$0	\$0	\$0	\$0	\$0	\$8,307,801
SOURCES OF FUNDS																			
SPECIAL TAX RECEIPTS	\$59,769	\$0	\$0	\$0	\$0	\$0	\$0	\$0	\$0	\$0	\$0	\$0	\$0	\$0	\$0	\$0	\$0	\$0	\$59,769
INVESTMENT AGREEMENT EARNINGS	\$0	\$0	\$0	\$0	\$0	\$0	\$0	\$0	\$0	\$0	\$0	\$0	\$0	\$0	\$0	\$0	\$0	\$0	\$0
OTHER INVESTMENT EARNINGS	\$0	\$0	\$0	\$0	\$0	\$0	\$0	\$0	\$0	\$0	\$0	\$0	\$0	\$0	\$0	\$0	\$0	\$0	\$0
MISCELLANEOUS	\$0	\$0	\$0	\$0	\$0	\$0	\$0	\$0	\$0	\$0	\$0	\$0	\$0	\$0	\$0	\$0	\$0	\$0	\$0
TOTAL SOURCES	\$59,769	\$0	\$0	\$0	\$0	\$0	\$0	\$0	\$0	\$0	\$0	\$0	\$0	\$0	\$0	\$0	\$0	\$0	\$59,769
USES OF FUNDS																			
INTEREST PAYMENTS	\$0	\$0	\$0	\$0	\$0	\$0	\$0	\$0	\$0	\$0	\$0	\$0	\$0	\$0	\$0	\$0	\$0	\$0	\$0
PRINCIPAL PAYMENTS	\$0	\$0	\$0	\$0	\$0	\$0	\$0	\$0	\$0	\$0	\$0	\$0	\$0	\$0	\$0	\$0	\$0	\$0	\$0
PUBLIC FACILITIES	\$0	\$0	\$0	\$0	\$0	\$0	\$0	\$0	\$0	\$0	\$0	\$0	\$0	\$0	\$0	\$0	\$0	\$0	\$0
PROFESSIONAL SERVICES	\$0	\$0	\$0	\$0	\$0	\$0	\$0	\$0	\$0	\$0	\$0	\$0	\$0	\$0	\$0	\$0	\$0	\$0	\$0
MISCELLANEOUS	\$0	\$0	\$0	\$0	\$0	\$0	\$0	\$0	\$0	\$0	\$0	\$0	\$0	\$0	\$0	\$0	\$0	\$0	\$0
TOTAL USES	\$0	\$0	\$0	\$0	\$0	\$0	\$0	\$0	\$0	\$0	\$0	\$0	\$0	\$0	\$0	\$0	\$0	\$0	\$0
TRANSFERS	\$0	\$0	\$0	\$0	\$0	\$0	\$0	\$0	\$0	\$0	\$0	\$0	\$0	\$0	\$0	\$0	\$0	\$0	\$0
ENDING BALANCE	\$1,796,301	\$0	\$0	\$4,956,238	\$91,155	\$1,518,813	\$0	\$0	\$5,064	\$0	\$0	\$0	\$0	\$0	\$0	\$0	\$0	\$0	\$8,367,570

Reserve Requirement: \$4,956,238

PRINTED: 08/04/10
17:12

PAGE:12

EXHIBIT B

*IA No. 2002-1 of
CFD No. 90-2 of the
Capistrano Unified School District*

*Special Tax Roll
Fiscal year 2010-2011*

Exhibit B**IA No. 2002-1 of CFD No. 90-2 of the
Capistrano Unified School District**

<u>Assessor's Parcel Number</u>	<u>FY 2010-2011 Special Tax</u>
701-301-01	\$1,991.49
701-301-02	\$2,272.58
701-301-03	\$1,818.78
701-301-04	\$2,111.44
701-301-05	\$1,818.78
701-301-06	\$2,143.23
701-301-07	\$2,272.58
701-301-08	\$1,818.78
701-301-09	\$2,147.57
701-301-10	\$1,991.49
701-301-11	\$2,272.58
701-301-12	\$2,143.23
701-301-13	\$2,148.29
701-301-14	\$1,991.49
701-301-15	\$1,818.78
701-301-16	\$2,111.44
701-301-17	\$1,991.49
701-301-18	\$2,272.58
701-301-19	\$1,818.78
701-301-21	\$1,818.78
701-301-22	\$2,111.44
701-301-23	\$1,991.49
701-301-24	\$2,111.44
701-301-25	\$1,991.49
701-301-26	\$2,111.44
701-301-27	\$1,991.49
701-301-28	\$2,111.44
701-301-29	\$2,111.44
701-301-30	\$1,818.78
701-301-31	\$1,818.78
701-301-32	\$1,991.49
701-301-33	\$2,273.30
701-301-34	\$1,991.49
701-301-35	\$1,818.78
701-301-36	\$1,952.47
701-301-37	\$1,991.49
701-301-38	\$1,818.78
701-301-39	\$2,272.58
701-301-50	\$2,235.00
701-301-51	\$2,244.40
701-301-52	\$1,940.90
701-301-53	\$2,244.40
701-352-02	\$2,512.48
701-352-03	\$2,263.91
701-352-04	\$2,512.48
701-352-05	\$2,512.48
701-352-06	\$2,148.29
701-352-07	\$2,512.48

Exhibit B**IA No. 2002-1 of CFD No. 90-2 of the
Capistrano Unified School District**

<u>Assessor's Parcel Number</u>	<u>FY 2010-2011 Special Tax</u>
701-352-08	\$2,263.91
701-352-09	\$2,512.48
701-352-10	\$2,263.91
701-352-11	\$2,512.48
701-352-12	\$2,263.91
701-352-13	\$2,512.48
701-352-14	\$2,263.91
701-352-15	\$2,148.29
701-352-16	\$2,512.48
701-352-17	\$2,263.91
701-352-18	\$2,148.29
701-352-19	\$2,263.91
701-352-20	\$2,512.48
701-352-21	\$2,263.91
701-352-22	\$2,512.48
701-352-23	\$2,263.91
701-352-24	\$2,512.48
701-352-25	\$2,263.91
701-352-26	\$2,512.48
701-352-27	\$2,263.91
701-352-28	\$2,148.29
701-352-29	\$2,263.91
701-352-30	\$2,263.91
701-352-31	\$2,148.29
701-352-32	\$2,263.91
701-352-33	\$2,512.48
701-352-34	\$2,263.91
701-352-35	\$2,148.29
701-352-36	\$2,512.48
701-352-37	\$2,512.48
701-352-38	\$2,512.48
701-352-39	\$2,148.29
701-352-40	\$2,512.48
701-353-01	\$2,512.48
701-353-02	\$2,263.91
701-353-03	\$2,263.91
701-353-04	\$2,148.29
701-353-05	\$2,263.91
701-353-06	\$2,512.48
701-353-07	\$2,263.91
701-353-08	\$2,148.29
701-353-09	\$2,263.91
701-353-10	\$2,148.29
701-353-11	\$2,263.91
701-353-12	\$2,148.29
701-353-13	\$2,263.91
701-353-14	\$2,148.29
701-353-15	\$2,263.91
701-353-16	\$2,512.48

Exhibit B**IA No. 2002-1 of CFD No. 90-2 of the
Capistrano Unified School District**

<u>Assessor's Parcel Number</u>	<u>FY 2010-2011 Special Tax</u>
701-353-17	\$2,148.29
701-353-18	\$2,148.29
701-353-19	\$2,356.40
701-353-20	\$2,607.14
701-353-21	\$2,263.91
701-353-22	\$2,148.29
701-353-23	\$2,148.29
701-353-24	\$2,263.91
701-353-25	\$2,512.48
701-353-26	\$2,512.48
701-353-27	\$2,263.91
701-353-28	\$2,512.48
701-353-29	\$2,512.48
701-353-30	\$2,148.29
701-353-31	\$2,263.91
701-353-32	\$2,148.29
701-353-33	\$2,263.91
701-353-34	\$2,512.48
701-362-01	\$3,278.44
701-362-02	\$2,677.23
701-362-03	\$3,128.14
701-362-04	\$3,278.44
701-362-05	\$3,128.14
701-362-06	\$2,677.23
701-362-07	\$3,278.44
701-362-08	\$3,128.14
701-362-09	\$3,278.44
701-362-10	\$2,677.23
701-362-11	\$3,278.44
701-362-12	\$3,128.14
701-362-13	\$2,677.23
701-362-14	\$3,278.44
701-362-15	\$3,128.14
701-362-16	\$3,278.44
701-362-17	\$2,677.23
701-362-18	\$3,128.14
701-362-19	\$2,677.23
701-362-20	\$3,278.44
701-362-21	\$3,278.44
701-362-22	\$3,128.14
701-362-23	\$2,677.23
701-362-24	\$3,128.14
701-362-25	\$3,278.44
701-362-26	\$2,677.23
701-362-27	\$3,278.44
701-362-28	\$3,288.55
701-362-29	\$3,128.14
701-362-30	\$3,288.55
701-362-31	\$2,677.23

Exhibit B**IA No. 2002-1 of CFD No. 90-2 of the
Capistrano Unified School District**

<u>Assessor's Parcel Number</u>	<u>FY 2010-2011 Special Tax</u>
701-362-32	\$3,128.14
701-362-33	\$3,288.55
701-362-34	\$2,677.23
701-362-35	\$3,128.14
701-362-36	\$2,677.23
701-362-37	\$3,278.44
701-363-01	\$3,128.14
701-363-02	\$3,128.14
701-363-03	\$3,426.57
701-363-04	\$3,128.14
701-363-05	\$2,677.23
701-363-06	\$3,288.55
701-363-07	\$2,677.23
701-363-08	\$3,288.55
701-363-09	\$3,128.14
701-363-10	\$2,677.23
701-363-11	\$3,288.55
701-363-12	\$3,128.14
701-363-13	\$3,288.55
701-363-14	\$2,677.23
701-363-15	\$3,128.14
701-363-16	\$2,677.23
701-363-17	\$3,288.55
701-363-18	\$3,128.14
701-363-19	\$3,288.55
701-363-20	\$2,677.23
701-363-21	\$3,288.55
701-363-22	\$3,128.14
701-363-23	\$3,288.55
701-363-24	\$3,128.14
701-363-25	\$3,288.55
701-363-26	\$2,677.23
701-363-27	\$3,128.14
701-363-28	\$3,278.44
701-363-29	\$3,128.14
701-363-30	\$3,278.44
701-363-31	\$2,677.23
701-363-32	\$3,128.14
701-363-33	\$3,278.44
701-363-34	\$3,128.14
701-363-35	\$3,278.44
701-363-36	\$3,128.14
701-363-37	\$3,278.44
701-363-38	\$3,128.14
701-363-39	\$2,677.23
701-371-22	\$6,517.73
701-371-23	\$1,472.40
701-371-24	\$1,465.70
701-372-01	\$1,746.29

Exhibit B**IA No. 2002-1 of CFD No. 90-2 of the
Capistrano Unified School District**

<u>Assessor's Parcel Number</u>	<u>FY 2010-2011 Special Tax</u>
701-372-02	\$1,163.32
701-372-03	\$753.01
701-372-04	\$948.64
701-382-01	\$1,635.24
701-382-02	\$1,681.49
701-382-03	\$1,742.91
701-382-04	\$1,772.54
701-382-05	\$1,742.91
701-382-06	\$1,772.54
701-382-07	\$1,681.49
701-382-08	\$1,635.24
701-382-09	\$1,772.54
701-382-10	\$1,742.91
701-382-11	\$1,772.54
701-382-12	\$1,635.24
701-382-13	\$1,681.49
701-382-14	\$1,772.54
701-382-15	\$1,742.91
701-382-16	\$1,742.91
701-382-17	\$1,681.49
701-382-18	\$1,635.24
701-382-19	\$1,772.54
701-382-20	\$1,742.91
701-382-21	\$1,635.24
701-382-22	\$1,681.49
701-382-23	\$1,742.91
701-382-24	\$1,772.54
701-382-25	\$1,742.91
701-382-26	\$1,742.91
701-382-27	\$1,772.54
701-382-28	\$1,742.91
701-382-29	\$1,681.49
701-382-30	\$1,635.24
701-382-31	\$1,681.49
701-382-32	\$1,772.54
701-382-33	\$1,742.91
701-382-34	\$1,681.49
701-382-35	\$1,742.91
701-382-36	\$1,681.49
701-382-37	\$1,772.54
701-382-38	\$1,772.54
701-382-39	\$1,742.91
701-382-40	\$1,635.24
701-382-41	\$1,681.49
701-382-42	\$1,635.24
701-382-43	\$1,681.49
701-382-44	\$1,742.91
701-382-45	\$1,772.54
701-382-46	\$1,742.91

Exhibit B

IA No. 2002-1 of CFD No. 90-2 of the
Capistrano Unified School District

<u>Assessor's Parcel Number</u>	<u>FY 2010-2011 Special Tax</u>
701-382-47	\$1,772.54
701-382-48	\$1,681.49
701-382-49	\$1,742.91
701-382-50	\$1,681.49
701-383-01	\$1,635.24
701-383-02	\$1,681.49
701-383-03	\$1,742.91
701-383-04	\$1,772.54
701-383-05	\$1,742.91
701-383-06	\$1,772.54
701-383-07	\$1,681.49
701-383-08	\$1,635.24
701-383-09	\$1,635.24
701-383-10	\$1,681.49
701-383-11	\$1,772.54
701-383-12	\$1,742.91
701-383-13	\$1,772.54
701-383-14	\$1,742.91
701-383-15	\$1,681.49
701-383-16	\$1,772.54
701-383-17	\$1,742.91
701-383-18	\$1,681.49
701-383-19	\$1,635.24
701-383-20	\$1,681.49
701-383-21	\$1,742.91
701-383-22	\$1,635.24
701-383-23	\$1,772.54
701-383-24	\$1,681.49
701-383-25	\$1,742.91
701-383-26	\$1,635.24
701-383-27	\$1,772.54
701-383-28	\$1,742.91
701-383-29	\$1,772.54
701-383-30	\$1,681.49
701-383-31	\$1,635.24
701-383-32	\$1,681.49
701-383-33	\$1,681.49
701-383-34	\$1,635.24
701-383-35	\$1,776.15
701-383-36	\$1,742.91
701-383-37	\$1,635.24
701-383-38	\$1,772.54
701-383-39	\$1,742.91
701-383-40	\$1,681.49
701-383-41	\$1,742.91
701-383-42	\$1,772.54
701-383-43	\$1,681.49
701-392-01	\$1,815.89
701-392-02	\$1,702.45

Exhibit B**IA No. 2002-1 of CFD No. 90-2 of the
Capistrano Unified School District**

<u>Assessor's Parcel Number</u>	<u>FY 2010-2011 Special Tax</u>
701-392-03	\$2,089.76
701-392-04	\$1,815.89
701-392-05	\$2,089.76
701-392-06	\$1,815.89
701-392-07	\$1,815.89
701-392-08	\$2,089.76
701-392-09	\$1,815.89
701-392-10	\$2,089.76
701-392-11	\$1,815.89
701-392-12	\$2,089.76
701-392-13	\$2,089.76
701-392-14	\$1,815.89
701-392-15	\$1,702.45
701-392-16	\$1,815.89
701-392-17	\$2,089.76
701-392-18	\$2,089.76
701-392-19	\$1,815.89
701-392-20	\$1,702.45
701-392-21	\$1,815.89
701-392-22	\$2,089.76
701-392-23	\$2,089.76
701-392-24	\$1,702.45
701-392-25	\$1,815.89
701-392-26	\$1,702.45
701-392-27	\$1,815.89
701-392-28	\$1,702.45
701-392-29	\$1,815.89
701-392-30	\$2,219.10
701-392-31	\$1,815.89
701-392-32	\$2,089.76
701-392-33	\$1,702.45
701-392-34	\$2,089.76
701-392-35	\$1,815.89
701-392-36	\$1,702.45
701-392-37	\$2,089.76
701-392-38	\$1,702.45
701-392-39	\$2,089.76
701-392-40	\$1,702.45
701-392-41	\$1,702.45
701-392-42	\$2,089.76
701-392-43	\$1,815.89
701-392-44	\$1,815.89
701-392-45	\$2,089.76
701-392-46	\$1,815.89
701-392-47	\$2,089.76
701-392-48	\$1,815.89
701-392-49	\$2,089.76
701-392-50	\$1,702.45
701-393-01	\$2,089.76

Exhibit B**IA No. 2002-1 of CFD No. 90-2 of the
Capistrano Unified School District**

<u>Assessor's Parcel Number</u>	<u>FY 2010-2011 Special Tax</u>
701-393-02	\$1,815.89
701-393-03	\$1,702.45
701-393-04	\$2,089.76
701-393-05	\$1,815.89
701-393-06	\$2,089.76
701-393-07	\$1,815.89
701-393-08	\$1,702.45
701-393-09	\$1,702.45
701-393-10	\$2,089.76
701-393-11	\$1,815.89
701-393-12	\$2,089.76
701-393-13	\$1,702.45
701-393-14	\$1,702.45
701-393-15	\$2,089.76
701-393-16	\$1,815.89
701-393-17	\$2,089.76
701-393-18	\$1,815.89
701-393-19	\$1,702.45
701-393-20	\$1,815.89
701-393-21	\$2,089.76
701-393-22	\$1,702.45
701-393-23	\$1,815.89
701-393-24	\$2,089.76
701-393-25	\$1,702.45
701-393-26	\$1,815.89
701-393-27	\$2,089.76
701-393-28	\$1,702.45
701-401-01	\$1,543.47
701-401-02	\$1,542.75
701-401-03	\$1,655.48
701-401-04	\$1,543.47
701-401-05	\$1,779.76
701-401-06	\$1,655.48
701-401-07	\$1,779.76
701-401-08	\$1,543.47
701-401-09	\$1,655.48
701-401-10	\$1,542.75
701-401-11	\$1,543.47
701-401-12	\$1,779.76
701-401-13	\$1,542.75
701-401-14	\$1,655.48
701-401-15	\$1,655.48
701-401-16	\$1,655.48
701-401-17	\$1,542.75
701-401-18	\$1,543.47
701-401-19	\$1,655.48
701-401-20	\$1,779.76
701-401-21	\$1,543.47
701-401-22	\$1,779.76

Exhibit B**IA No. 2002-1 of CFD No. 90-2 of the
Capistrano Unified School District**

<u>Assessor's Parcel Number</u>	<u>FY 2010-2011 Special Tax</u>
701-401-23	\$1,655.48
701-401-24	\$1,779.76
701-401-25	\$1,655.48
701-401-26	\$1,542.75
701-401-27	\$1,543.47
701-401-28	\$1,779.76
701-401-29	\$1,655.48
701-401-30	\$1,655.48
701-401-31	\$1,779.76
701-401-32	\$1,543.47
701-401-33	\$1,542.75
701-401-34	\$1,655.48
701-401-35	\$1,542.75
701-401-36	\$1,543.47
701-401-37	\$1,779.76
701-401-38	\$1,655.48
701-401-39	\$1,543.47
701-401-40	\$1,655.48
701-401-41	\$1,779.76
701-401-42	\$1,543.47
701-411-01	\$1,543.47
701-411-02	\$1,655.48
701-411-03	\$1,779.76
701-411-04	\$1,543.47
701-411-05	\$1,655.48
701-411-06	\$1,542.75
701-411-07	\$1,655.48
701-411-08	\$1,779.76
701-411-09	\$1,543.47
701-411-10	\$1,542.75
701-411-11	\$1,655.48
701-411-12	\$1,779.76
701-411-13	\$1,543.47
701-411-14	\$1,779.76
701-411-15	\$1,655.48
701-411-16	\$1,637.41
701-411-17	\$1,543.47
701-411-18	\$1,542.75
701-411-19	\$1,655.48
701-411-20	\$1,779.76
701-411-21	\$1,543.47
701-411-22	\$1,542.75
701-411-23	\$1,779.76
701-411-24	\$1,543.47
701-411-25	\$1,543.47
701-411-26	\$1,542.75
701-411-27	\$1,779.76
701-411-28	\$1,655.48
701-411-29	\$1,543.47

Exhibit B**IA No. 2002-1 of CFD No. 90-2 of the
Capistrano Unified School District**

<u>Assessor's Parcel Number</u>	<u>FY 2010-2011 Special Tax</u>
701-411-30	\$1,779.76
701-411-31	\$1,655.48
701-411-32	\$1,543.47
701-411-33	\$1,542.75
701-411-34	\$1,543.47
701-411-35	\$1,655.48
701-411-36	\$1,779.76
701-411-37	\$1,542.75
701-411-38	\$1,543.47
701-411-39	\$1,655.48
701-411-40	\$1,543.47
701-411-41	\$1,779.76
701-411-42	\$1,655.48
701-411-43	\$1,779.76
701-411-44	\$1,543.47
701-411-45	\$1,542.75
701-411-46	\$1,655.48
701-411-47	\$1,543.47
701-411-48	\$1,779.76
701-411-49	\$1,655.48
708-011-01	\$3,784.26
708-011-02	\$3,243.03
708-011-03	\$3,234.36
708-011-04	\$3,508.22
708-011-05	\$3,243.03
708-011-06	\$3,739.46
708-011-07	\$3,391.16
708-011-08	\$3,667.20
708-011-09	\$3,508.22
708-011-10	\$3,622.39
708-011-11	\$3,243.03
708-011-12	\$3,508.22
708-011-13	\$3,243.03
708-011-14	\$3,391.16
708-011-15	\$3,243.03
708-011-16	\$3,784.26
708-011-17	\$3,243.03
708-011-18	\$3,508.22
708-011-19	\$3,234.36
708-011-20	\$3,391.16
708-011-21	\$3,243.03
708-011-22	\$3,243.03
708-011-23	\$3,508.22
708-021-01	\$3,234.36
708-021-02	\$3,667.20
708-021-03	\$3,508.22
708-021-04	\$3,622.39
708-021-05	\$3,234.36
708-021-06	\$3,784.26

Exhibit B**IA No. 2002-1 of CFD No. 90-2 of the
Capistrano Unified School District**

<u>Assessor's Parcel Number</u>	<u>FY 2010-2011 Special Tax</u>
708-021-07	\$3,243.03
708-021-08	\$3,391.16
708-021-09	\$3,234.36
708-021-10	\$3,739.46
708-021-11	\$3,243.03
708-021-12	\$3,234.36
708-021-13	\$3,243.03
708-021-14	\$3,508.22
708-021-15	\$3,234.36
708-021-16	\$3,508.22
708-021-17	\$3,508.22
708-021-18	\$3,243.03
708-021-19	\$3,243.03
708-033-01	\$2,507.42
708-033-02	\$2,545.72
708-033-03	\$2,498.03
708-033-04	\$2,076.03
708-033-05	\$2,545.72
708-033-06	\$2,507.42
708-033-07	\$2,318.10
708-033-08	\$2,545.72
708-033-09	\$2,507.42
708-033-10	\$2,076.03
708-033-11	\$2,318.10
708-033-12	\$2,507.42
708-033-13	\$2,545.72
708-033-14	\$2,318.10
708-033-15	\$2,076.03
708-033-16	\$2,507.42
708-033-17	\$2,545.72
708-033-18	\$2,507.42
708-033-19	\$2,318.10
708-033-20	\$2,076.03
708-033-21	\$2,507.42
708-033-22	\$2,545.72
708-033-23	\$2,318.10
708-033-24	\$2,507.42
708-033-25	\$2,545.72
708-033-26	\$2,318.10
708-033-27	\$2,507.42
708-033-28	\$2,076.03
708-033-29	\$2,507.42
708-033-30	\$2,076.03
708-033-31	\$2,498.03
708-033-32	\$2,545.72
708-033-33	\$2,318.10
708-033-34	\$2,507.42
708-033-35	\$2,076.03
708-033-36	\$2,545.72

Exhibit B**IA No. 2002-1 of CFD No. 90-2 of the
Capistrano Unified School District**

<u>Assessor's Parcel Number</u>	<u>FY 2010-2011 Special Tax</u>
708-033-37	\$2,318.10
708-033-38	\$2,507.42
708-033-39	\$2,498.03
708-033-40	\$2,076.03
708-033-41	\$2,076.03
708-033-42	\$2,507.42
708-033-43	\$2,498.03
708-033-44	\$2,076.03
708-033-45	\$2,507.42
708-033-46	\$2,076.03
708-033-47	\$2,545.72
708-033-48	\$2,498.03
708-033-49	\$2,507.42
708-033-50	\$2,545.72
708-033-51	\$2,507.42
708-034-01	\$2,093.37
708-034-02	\$2,359.29
708-034-03	\$2,045.68
708-034-04	\$2,235.00
708-034-05	\$2,359.29
708-034-06	\$1,940.90
708-034-07	\$2,359.29
708-034-08	\$2,235.00
708-034-09	\$1,940.90
708-034-10	\$2,359.29
708-034-11	\$2,235.00
708-034-12	\$1,940.90
708-034-13	\$2,359.29
708-034-14	\$2,093.37
708-034-15	\$2,359.29
708-034-16	\$2,235.00
708-034-17	\$2,244.40
708-034-18	\$1,940.90
708-034-19	\$2,244.40
708-034-20	\$2,093.37
708-034-21	\$1,940.90
708-034-22	\$2,244.40
708-034-23	\$2,235.00
708-034-24	\$2,359.29
708-034-25	\$2,093.37
708-034-26	\$2,359.29
708-034-27	\$2,359.29
708-034-28	\$1,940.90
708-034-29	\$2,235.00
708-034-30	\$2,244.40
708-034-31	\$2,093.37
708-034-32	\$2,244.40
708-034-33	\$2,244.40
708-034-34	\$1,940.90

Exhibit B**IA No. 2002-1 of CFD No. 90-2 of the
Capistrano Unified School District**

<u>Assessor's Parcel Number</u>	<u>FY 2010-2011 Special Tax</u>
708-034-35	\$2,244.40
708-034-36	\$2,244.40
708-034-37	\$2,235.00
708-034-38	\$1,940.90
708-034-39	\$1,940.90
708-034-40	\$2,093.37
708-034-41	\$2,359.29
708-034-42	\$2,093.37
708-034-43	\$2,359.29
708-034-44	\$2,235.00
708-034-45	\$2,244.40
708-034-46	\$2,045.68
708-034-47	\$1,940.90
708-034-48	\$2,093.37
708-034-49	\$2,045.68
708-034-50	\$1,940.90
708-034-51	\$2,093.37
708-034-52	\$1,940.90
708-034-53	\$2,093.37
708-034-54	\$2,359.29
708-034-55	\$2,235.00
708-034-56	\$2,045.68
708-034-57	\$1,940.90
708-035-01	\$2,507.42
708-035-02	\$2,545.72
708-035-03	\$2,318.10
708-035-04	\$2,507.42
708-035-05	\$2,545.72
708-035-06	\$2,507.42
708-035-07	\$2,318.10
708-035-08	\$2,507.42
708-035-09	\$2,545.72
708-035-10	\$2,076.03
708-035-11	\$2,318.10
708-035-12	\$2,507.42
708-035-13	\$2,545.72
708-035-14	\$2,076.03
708-035-15	\$2,529.82
708-035-16	\$2,225.61
708-035-17	\$2,498.03
708-035-18	\$2,714.09
708-035-19	\$2,507.42
708-035-20	\$2,090.48
708-035-21	\$2,492.97
708-035-22	\$2,529.82
708-035-23	\$2,318.10
708-035-24	\$2,529.82
708-035-25	\$2,507.42
708-035-26	\$2,507.42

Exhibit B**IA No. 2002-1 of CFD No. 90-2 of the
Capistrano Unified School District**

<u>Assessor's Parcel Number</u>	<u>FY 2010-2011 Special Tax</u>
708-035-27	\$2,545.72
708-035-28	\$2,318.10
708-035-29	\$2,545.72
708-035-30	\$2,318.10
708-035-31	\$2,076.03
708-035-32	\$2,507.42
708-035-33	\$2,545.72
708-035-34	\$2,318.10
708-035-35	\$2,076.03
708-035-36	\$2,545.72
708-035-37	\$2,507.42
708-035-38	\$2,318.10
708-035-39	\$2,076.03
708-035-40	\$2,545.72
708-035-41	\$2,507.42
708-035-42	\$2,545.72
708-035-43	\$2,507.42
708-035-44	\$2,545.72
708-035-45	\$2,318.10
708-035-46	\$2,507.42
708-035-47	\$2,318.10
708-035-48	\$2,545.72
708-035-49	\$2,507.42
708-035-50	\$2,076.03
708-035-51	\$2,507.42
708-035-52	\$2,076.03
708-035-53	\$2,318.10
708-035-54	\$2,076.03
708-035-55	\$2,318.10
708-035-56	\$2,507.42
708-035-57	\$2,545.72
708-035-58	\$2,318.10
708-052-01	\$2,492.97
708-052-02	\$2,838.37
708-052-03	\$2,661.34
708-052-04	\$2,933.03
708-052-05	\$3,019.02
708-052-06	\$2,661.34
708-052-07	\$2,492.97
708-052-08	\$2,838.37
708-052-09	\$2,661.34
708-052-10	\$2,747.33
708-052-11	\$2,661.34
708-052-12	\$2,718.42
708-052-13	\$2,492.97
708-052-14	\$2,718.42
708-052-18	\$2,838.37
708-052-19	\$2,838.37
708-052-20	\$2,661.34

Exhibit B**IA No. 2002-1 of CFD No. 90-2 of the
Capistrano Unified School District**

<u>Assessor's Parcel Number</u>	<u>FY 2010-2011 Special Tax</u>
708-052-21	\$2,838.37
708-052-22	\$2,747.33
708-052-23	\$2,661.34
708-052-28	\$2,747.33
708-052-29	\$2,718.42
708-052-33	\$2,838.37
708-052-34	\$2,661.34
708-052-35	\$2,747.33
708-052-43	\$2,747.33
708-052-44	\$2,661.34
708-052-45	\$2,747.33
708-052-46	\$2,838.37
708-052-47	\$2,661.34
708-052-48	\$2,747.33
708-052-49	\$2,718.42
708-052-50	\$2,661.34
708-052-51	\$2,747.33
708-052-52	\$2,718.42
708-052-53	\$2,661.34
708-052-54	\$2,747.33
708-052-55	\$2,838.37
708-052-56	\$2,718.42
708-052-61	\$2,838.37
708-052-62	\$2,492.97
708-052-63	\$2,661.34
708-052-64	\$2,838.37
708-052-65	\$2,747.33
708-052-66	\$2,661.34
708-052-67	\$2,838.37
708-052-68	\$2,492.97
708-052-69	\$2,718.42
708-052-70	\$2,747.33
708-052-71	\$2,661.34
708-052-72	\$2,838.37
708-052-73	\$2,492.97
708-052-74	\$2,718.42
708-052-75	\$2,661.34
708-052-76	\$2,838.37
708-052-77	\$2,661.34
708-052-78	\$2,790.68
708-052-79	\$2,919.30
708-052-80	\$2,718.42
708-052-81	\$2,661.34
708-052-82	\$2,844.88
708-052-83	\$2,790.68
708-052-84	\$2,838.37
708-062-01	\$2,860.05
708-062-02	\$2,883.17
708-062-03	\$2,711.20

Exhibit B**IA No. 2002-1 of CFD No. 90-2 of the
Capistrano Unified School District**

<u>Assessor's Parcel Number</u>	<u>FY 2010-2011 Special Tax</u>
708-062-04	\$2,860.05
708-062-05	\$2,883.17
708-062-06	\$2,711.20
708-062-07	\$2,860.05
708-062-08	\$2,883.17
708-062-09	\$2,860.05
708-062-10	\$2,711.20
708-062-11	\$2,860.05
708-062-12	\$2,883.17
708-062-13	\$2,711.20
708-062-14	\$2,883.17
708-062-15	\$2,860.05
708-062-16	\$2,860.05
708-062-17	\$2,883.17
708-062-18	\$2,883.17
708-062-19	\$2,711.20
708-063-01	\$2,860.05
708-063-02	\$2,883.17
708-063-03	\$2,691.69
708-063-04	\$2,883.17
708-063-05	\$2,860.05
708-063-06	\$2,883.17
708-063-07	\$2,691.69
708-063-08	\$2,883.17
708-063-09	\$2,860.05
708-063-10	\$2,883.17
708-063-11	\$2,860.05
708-063-12	\$2,860.05
708-063-13	\$2,711.20
708-063-14	\$2,883.17
708-063-15	\$2,711.20
708-063-16	\$2,860.05
708-063-17	\$2,883.17
708-063-18	\$2,860.05
708-063-19	\$2,883.17
708-063-20	\$2,711.20
708-063-21	\$2,883.17
708-063-22	\$2,860.05
708-063-23	\$2,883.17
708-063-24	\$2,711.20
708-063-25	\$2,860.05
708-063-26	\$2,883.17
708-063-27	\$2,691.69
708-063-28	\$2,860.05
708-063-29	\$2,883.17
708-063-30	\$2,691.69
708-063-31	\$2,860.05
708-063-32	\$2,883.17
708-063-33	\$2,860.05

Exhibit B**IA No. 2002-1 of CFD No. 90-2 of the
Capistrano Unified School District**

<u>Assessor's Parcel Number</u>	<u>FY 2010-2011 Special Tax</u>
708-063-34	\$2,883.17
708-063-35	\$2,860.05
708-063-36	\$2,883.17
708-063-37	\$2,883.17
708-063-38	\$2,860.05
708-063-39	\$2,691.69
708-063-40	\$2,883.17
708-063-41	\$2,860.05
708-063-42	\$2,860.05
708-063-43	\$2,711.20
708-063-44	\$2,883.17
708-063-45	\$2,860.05
708-063-46	\$2,860.05
708-063-47	\$2,711.20
708-063-48	\$2,883.17
708-063-49	\$2,711.20
708-063-50	\$2,860.05
708-063-51	\$2,883.17
708-063-52	\$2,711.20
708-063-53	\$2,883.17
708-072-01	\$1,691.61
708-072-02	\$1,678.60
708-072-03	\$1,785.54
708-072-04	\$1,770.37
708-072-05	\$1,678.60
708-072-06	\$1,770.37
708-072-07	\$1,785.54
708-072-08	\$1,691.61
708-072-09	\$1,678.60
708-072-10	\$1,785.54
708-072-11	\$1,770.37
708-072-12	\$1,691.61
708-072-13	\$1,785.54
708-072-14	\$1,770.37
708-072-15	\$1,785.54
708-072-16	\$1,678.60
708-072-17	\$1,691.61
708-072-18	\$1,785.54
708-072-19	\$1,770.37
708-072-20	\$1,678.60
708-072-21	\$1,770.37
708-072-22	\$1,691.61
708-072-23	\$1,785.54
708-072-24	\$1,678.60
708-072-25	\$1,785.54
708-072-26	\$1,691.61
708-072-27	\$1,678.60
708-072-28	\$1,785.54
708-072-29	\$1,770.37

Exhibit B**IA No. 2002-1 of CFD No. 90-2 of the
Capistrano Unified School District**

<u>Assessor's Parcel Number</u>	<u>FY 2010-2011 Special Tax</u>
708-072-30	\$1,691.61
708-072-31	\$1,678.60
708-072-32	\$1,691.61
708-072-33	\$1,770.37
708-072-34	\$1,785.54
708-072-35	\$1,691.61
708-072-36	\$1,785.54
708-072-37	\$1,770.37
708-072-38	\$1,678.60
708-072-39	\$1,785.54
708-072-40	\$1,770.37
708-072-41	\$1,785.54
708-072-42	\$1,691.61
708-072-43	\$1,785.54
708-072-44	\$1,770.37
708-072-45	\$1,678.60
708-072-46	\$1,691.61
708-072-47	\$1,785.54
708-072-48	\$1,770.37
708-072-49	\$1,770.37
708-072-50	\$1,678.60
708-072-51	\$1,785.54
708-072-52	\$1,691.61
708-072-53	\$1,770.37
708-072-54	\$1,785.54
708-072-55	\$1,678.60
708-072-56	\$1,770.37
708-072-57	\$1,691.61
708-073-01	\$1,770.37
708-073-02	\$1,785.54
708-073-03	\$1,678.60
708-073-04	\$1,770.37
708-073-05	\$1,785.54
708-073-06	\$1,678.60
708-073-07	\$1,691.61
708-073-08	\$1,930.06
708-073-09	\$1,691.61
708-073-10	\$1,770.37
708-073-11	\$1,930.06
708-073-12	\$1,678.60
708-073-13	\$1,691.61
708-073-14	\$1,785.54
708-073-15	\$1,770.37
708-073-16	\$1,691.61
708-073-17	\$1,785.54
708-073-18	\$1,678.60
708-073-19	\$1,770.37
708-073-20	\$1,785.54
708-073-21	\$1,678.60

Exhibit B**IA No. 2002-1 of CFD No. 90-2 of the
Capistrano Unified School District**

<u>Assessor's Parcel Number</u>	<u>FY 2010-2011 Special Tax</u>
708-073-22	\$1,785.54
708-073-23	\$1,678.60
708-073-24	\$1,785.54
708-073-25	\$1,691.61
708-073-26	\$1,770.37
708-073-27	\$1,785.54
708-073-28	\$1,770.37
708-073-29	\$1,691.61
708-073-30	\$1,770.37
708-073-31	\$1,785.54
708-073-32	\$1,691.61
708-073-33	\$1,785.54
708-073-34	\$1,678.60
708-073-35	\$1,770.37
708-073-36	\$1,678.60
708-073-37	\$1,691.61
708-073-38	\$1,785.54
708-073-39	\$1,770.37
708-073-40	\$1,691.61
708-073-41	\$1,678.60
708-073-42	\$1,785.54
708-073-43	\$1,770.37
708-073-44	\$1,678.60
708-073-45	\$1,691.61
708-073-46	\$1,785.54
708-073-47	\$1,770.37
708-082-01	\$2,143.23
708-082-02	\$2,034.84
708-082-03	\$2,082.53
708-082-04	\$2,143.23
708-082-05	\$2,082.53
708-082-06	\$1,885.99
708-082-07	\$2,082.53
708-082-08	\$2,143.23
708-082-09	\$1,885.99
708-082-10	\$1,968.36
708-082-11	\$1,885.99
708-082-12	\$2,082.53
708-082-13	\$1,885.99
708-082-14	\$2,082.53
708-082-15	\$1,968.36
708-082-16	\$2,082.53
708-082-17	\$1,885.99
708-082-18	\$2,082.53
708-082-19	\$1,885.99
708-082-20	\$2,082.53
708-082-21	\$1,968.36
708-082-22	\$1,885.99
708-082-23	\$1,968.36

Exhibit B**IA No. 2002-1 of CFD No. 90-2 of the
Capistrano Unified School District**

<u>Assessor's Parcel Number</u>	<u>FY 2010-2011 Special Tax</u>
708-082-24	\$2,082.53
708-082-25	\$1,969.09
708-082-26	\$2,082.53
708-082-27	\$1,885.99
708-082-28	\$2,082.53
708-083-01	\$2,082.53
708-083-02	\$1,968.36
708-083-03	\$1,885.99
708-083-04	\$1,968.36
708-083-05	\$2,082.53
708-083-06	\$1,968.36
708-083-07	\$2,082.53
708-083-08	\$1,968.36
708-083-09	\$1,885.99
708-083-10	\$1,968.36
708-083-11	\$1,885.99
708-083-12	\$1,968.36
708-083-13	\$1,885.99
708-083-14	\$2,082.53
708-083-15	\$1,885.99
708-083-16	\$2,082.53
708-083-17	\$1,968.36
708-083-18	\$1,885.99
708-083-19	\$1,968.36
708-083-20	\$2,082.53
708-083-21	\$1,968.36
708-083-22	\$2,082.53
708-083-23	\$1,885.99
708-083-24	\$2,082.53
708-083-25	\$1,968.36
708-083-26	\$2,082.53
708-083-27	\$1,885.99
708-083-28	\$2,082.53
708-083-29	\$1,885.99
708-083-30	\$1,968.36
708-083-31	\$1,885.99
708-083-32	\$1,968.36
708-083-33	\$1,885.99
708-083-34	\$1,968.36
708-083-35	\$2,082.53
708-083-36	\$2,174.30
708-083-37	\$2,143.23
708-083-38	\$1,885.99
708-083-39	\$2,082.53
708-083-40	\$2,143.23
708-083-41	\$2,142.51
708-083-42	\$2,034.84
708-083-43	\$2,082.53
708-083-44	\$2,143.23

Exhibit B**IA No. 2002-1 of CFD No. 90-2 of the
Capistrano Unified School District**

<u>Assessor's Parcel Number</u>	<u>FY 2010-2011 Special Tax</u>
708-083-45	\$2,034.84
708-083-46	\$2,082.53
708-083-47	\$2,143.23
708-092-01	\$2,503.81
708-092-02	\$2,322.44
708-092-03	\$2,202.48
708-092-04	\$2,426.49
708-092-05	\$2,503.81
708-092-06	\$2,119.39
708-092-07	\$2,477.07
708-092-08	\$2,378.80
708-092-09	\$2,202.48
708-092-10	\$2,441.67
708-092-11	\$2,638.94
708-092-12	\$2,750.22
708-092-13	\$2,719.14
708-092-14	\$2,665.67
708-092-15	\$2,503.81
708-092-16	\$2,477.07
708-092-17	\$2,202.48
708-092-18	\$2,503.81
708-092-19	\$2,426.49
708-092-20	\$2,322.44
708-092-21	\$2,202.48
708-092-22	\$2,322.44
708-092-23	\$2,503.81
708-092-24	\$2,443.11
708-092-25	\$2,503.81
708-092-26	\$2,426.49
708-092-27	\$2,503.81
708-092-28	\$2,322.44
708-092-29	\$2,477.07
708-092-30	\$2,516.09
708-092-31	\$2,322.44
708-092-32	\$2,503.81
708-092-33	\$2,322.44
708-092-34	\$2,202.48
708-092-35	\$2,426.49
708-092-36	\$2,202.48
708-092-37	\$2,322.44
708-092-38	\$2,443.11
708-092-39	\$2,202.48
708-092-40	\$2,322.44
708-092-41	\$2,516.09
708-092-42	\$2,503.81
708-092-43	\$2,443.11
708-092-44	\$2,503.81
708-093-01	\$2,426.49
708-093-02	\$2,202.48

Exhibit B**IA No. 2002-1 of CFD No. 90-2 of the
Capistrano Unified School District**

<u>Assessor's Parcel Number</u>	<u>FY 2010-2011 Special Tax</u>
708-093-03	\$2,516.09
708-093-04	\$2,202.48
708-093-05	\$2,322.44
708-093-06	\$2,516.09
708-093-07	\$2,322.44
708-093-08	\$2,202.48
708-093-09	\$2,322.44
708-093-10	\$2,426.49
708-093-11	\$2,202.48
708-093-12	\$2,426.49
708-093-13	\$2,503.81
708-093-14	\$2,202.48
708-093-15	\$2,503.81
708-093-16	\$2,202.48
708-093-17	\$2,443.11
708-093-18	\$2,516.09
708-093-19	\$2,322.44
708-093-20	\$2,503.81
708-093-21	\$2,450.34
708-093-22	\$2,119.39
708-093-23	\$2,202.48
708-093-24	\$2,503.81
708-093-25	\$2,322.44
708-093-26	\$2,426.49
708-093-27	\$2,516.09
708-093-28	\$2,426.49
708-093-29	\$2,322.44
708-093-30	\$2,503.81
708-093-31	\$2,202.48
708-093-32	\$2,322.44
708-093-33	\$2,426.49
708-093-34	\$2,516.09
708-093-35	\$2,378.80
708-093-36	\$2,202.48
708-093-37	\$2,503.81
708-093-38	\$2,477.07
708-093-39	\$2,202.48
708-093-40	\$2,477.07
708-093-41	\$2,516.09
708-093-42	\$2,202.48
708-093-43	\$2,451.78
708-093-44	\$2,503.81
708-093-45	\$2,450.34
708-093-46	\$2,503.81
708-093-47	\$2,357.12
708-093-48	\$2,119.39
708-093-49	\$2,503.81
708-093-50	\$2,450.34
708-093-51	\$2,378.80

Exhibit B**IA No. 2002-1 of CFD No. 90-2 of the
Capistrano Unified School District**

<u>Assessor's Parcel Number</u>	<u>FY 2010-2011 Special Tax</u>
708-093-52	\$2,503.81
708-093-53	\$2,119.39
708-093-54	\$2,322.44
708-093-55	\$2,503.81
708-093-56	\$2,202.48
708-093-57	\$2,322.44
708-093-58	\$2,426.49
708-093-59	\$2,202.48
708-093-60	\$2,516.09
708-093-61	\$2,426.49
708-093-62	\$2,322.44
708-093-63	\$2,503.81
708-102-01	\$3,803.77
708-102-02	\$3,662.14
708-102-03	\$3,409.95
708-102-04	\$3,409.95
708-102-05	\$3,803.77
708-102-06	\$3,654.19
708-102-07	\$3,803.77
708-102-08	\$3,665.75
708-102-09	\$3,811.72
708-102-10	\$3,409.95
708-102-11	\$3,662.14
708-102-14	\$3,811.72
708-102-15	\$3,835.56
708-102-16	\$3,630.34
708-103-01	\$3,654.19
708-103-02	\$3,803.77
708-103-03	\$3,409.95
708-103-04	\$3,662.14
708-103-05	\$3,409.95
708-103-06	\$3,802.32
708-103-07	\$3,662.14
708-103-08	\$3,811.72
708-103-09	\$3,662.14
708-103-10	\$3,802.32
708-103-11	\$3,409.95
708-103-12	\$3,654.19
708-103-13	\$3,803.77
708-103-14	\$3,662.14
708-103-15	\$3,409.95
708-103-16	\$3,665.75
708-103-17	\$3,803.77
708-103-18	\$3,803.77
708-103-19	\$3,654.19
708-103-20	\$3,409.95
708-103-21	\$3,811.72
708-103-22	\$3,665.75
708-103-23	\$4,386.18

Exhibit B**IA No. 2002-1 of CFD No. 90-2 of the
Capistrano Unified School District**

<u>Assessor's Parcel Number</u>	<u>FY 2010-2011 Special Tax</u>
708-103-24	\$4,261.89
708-103-25	\$4,375.34
708-103-26	\$4,107.98
708-104-01	\$3,409.95
708-104-02	\$3,665.75
708-104-16	\$4,386.18
708-104-17	\$4,261.89
708-104-18	\$4,118.10
708-104-19	\$4,107.98
708-104-20	\$4,386.18
708-104-21	\$4,107.98
708-104-22	\$4,375.34
708-104-23	\$4,107.98
708-104-24	\$3,803.77
708-104-25	\$3,409.95
708-104-26	\$3,409.95
708-104-33	\$3,662.14
708-104-34	\$3,802.32
708-104-35	\$3,409.95
708-111-01	\$1,863.59
708-111-02	\$1,661.98
708-111-03	\$1,899.72
708-111-04	\$1,899.72
708-111-05	\$1,863.59
708-111-06	\$1,506.62
708-111-07	\$1,863.59
708-111-08	\$1,506.62
708-111-09	\$1,863.59
708-111-10	\$1,661.98
708-111-11	\$1,863.59
708-111-12	\$1,899.72
708-111-13	\$1,863.59
708-111-14	\$1,899.72
708-111-15	\$1,506.62
708-111-16	\$1,863.59
708-111-17	\$1,899.72
708-111-18	\$1,661.98
708-111-19	\$1,863.59
708-111-20	\$1,899.72
708-111-21	\$1,863.59
708-111-22	\$1,506.62
708-111-23	\$1,863.59
708-111-24	\$1,661.98
708-111-25	\$1,506.62
708-111-26	\$1,899.72
708-111-27	\$1,506.62
708-111-28	\$1,863.59
708-111-29	\$1,661.98
708-111-30	\$1,899.72

Exhibit B**IA No. 2002-1 of CFD No. 90-2 of the
Capistrano Unified School District**

<u>Assessor's Parcel Number</u>	<u>FY 2010-2011 Special Tax</u>
708-111-31	\$1,863.59
708-111-32	\$1,899.72
708-111-33	\$1,863.59
708-111-34	\$1,506.62
708-111-35	\$1,863.59
708-111-36	\$1,661.98
708-111-37	\$1,863.59
708-111-38	\$1,863.59
708-111-39	\$1,506.62
708-111-40	\$1,863.59
708-111-41	\$1,899.72
708-111-42	\$1,661.98
708-111-43	\$1,863.59
708-111-44	\$1,899.72
708-111-45	\$1,506.62
708-111-46	\$1,863.59
708-111-47	\$1,661.98
708-111-48	\$1,863.59
708-111-49	\$1,899.72
708-111-50	\$1,506.62
708-111-51	\$1,899.72
708-111-52	\$1,863.59
708-111-53	\$1,899.72
708-111-54	\$1,661.98
708-111-55	\$1,863.59
708-111-56	\$1,899.72
708-111-57	\$1,863.59
708-111-58	\$1,899.72
708-111-59	\$1,661.98
708-111-60	\$1,899.72
708-111-61	\$1,863.59
708-111-62	\$1,506.62
708-111-63	\$1,661.98
708-111-64	\$1,506.62
708-111-65	\$1,863.59
708-111-66	\$1,899.72
708-111-67	\$1,863.59
708-111-68	\$1,506.62
708-111-69	\$1,863.59
708-111-70	\$1,899.72
708-111-71	\$1,506.62
708-111-72	\$1,506.62
708-111-73	\$1,863.59
708-111-74	\$1,661.98
708-111-75	\$1,506.62
708-122-01	\$4,261.89
708-122-02	\$4,375.34
708-122-03	\$4,107.98
708-122-04	\$4,386.18

Exhibit B**IA No. 2002-1 of CFD No. 90-2 of the
Capistrano Unified School District**

<u>Assessor's Parcel Number</u>	<u>FY 2010-2011 Special Tax</u>
708-122-05	\$4,107.98
708-122-06	\$4,375.34
708-122-07	\$4,118.10
708-122-08	\$4,261.89
708-122-09	\$4,118.10
708-122-10	\$4,386.18
708-122-11	\$4,107.98
708-122-12	\$4,375.34
708-122-13	\$4,375.34
708-122-14	\$4,118.10
708-122-15	\$4,261.89
708-122-16	\$4,107.98
708-122-17	\$4,386.18
708-122-18	\$4,107.98
708-122-19	\$4,375.34
708-122-20	\$4,261.89
708-122-21	\$4,118.10
708-122-22	\$4,386.18
708-122-23	\$4,261.89
708-122-24	\$4,261.89
708-122-25	\$4,107.98
708-122-26	\$4,386.18
708-122-27	\$4,107.98
708-122-28	\$4,375.34
708-122-29	\$4,386.18
708-122-30	\$4,107.98
708-122-31	\$4,375.34
708-122-32	\$4,107.98
708-122-33	\$4,261.89
708-123-05	\$2,988.67
708-123-06	\$3,179.44
708-123-07	\$2,788.51
708-123-14	\$2,788.51
708-123-15	\$3,179.44
708-123-16	\$2,988.67
708-123-17	\$2,788.51
708-123-18	\$3,179.44
708-123-19	\$2,988.67
708-123-20	\$3,179.44
708-123-21	\$2,788.51
708-123-22	\$2,988.67
708-123-23	\$2,788.51
708-124-11	\$3,003.13
708-124-12	\$2,857.88
708-124-13	\$3,107.18
708-124-14	\$3,003.13
708-124-15	\$3,107.18
708-124-16	\$3,003.13
708-124-17	\$3,107.18

Exhibit B**IA No. 2002-1 of CFD No. 90-2 of the
Capistrano Unified School District**

<u>Assessor's Parcel Number</u>	<u>FY 2010-2011 Special Tax</u>
708-124-18	\$3,003.13
708-124-19	\$3,107.18
708-124-20	\$2,857.88
708-124-21	\$3,003.13
708-124-22	\$3,107.18
708-124-23	\$2,857.88
708-124-24	\$3,107.18
708-124-25	\$3,003.13
708-124-26	\$3,107.18
708-124-27	\$3,003.13
708-124-28	\$2,857.88
708-124-29	\$3,003.13
708-124-30	\$3,107.18
708-124-31	\$2,857.88
708-124-32	\$3,003.13
708-124-33	\$3,003.13
708-124-34	\$2,857.88
708-124-35	\$3,107.18
708-124-36	\$2,857.88
708-124-37	\$3,107.18
708-124-38	\$3,003.13
708-124-39	\$3,107.18
708-124-40	\$3,003.13
708-124-41	\$2,857.88
708-124-42	\$3,107.18
708-124-43	\$3,003.13
708-124-44	\$2,857.88
708-124-45	\$3,107.18
708-124-46	\$3,003.13
708-124-47	\$3,107.18
708-124-48	\$2,857.88
708-124-49	\$3,107.18
708-124-50	\$3,003.13
708-124-51	\$3,107.18
708-124-52	\$3,003.13
930-024-20	\$1,140.26
930-024-21	\$1,008.03
930-024-22	\$1,065.11
930-024-23	\$875.07
930-024-24	\$979.85
930-024-25	\$979.85
930-024-26	\$875.07
930-024-27	\$1,065.11
930-024-28	\$1,008.03
930-024-29	\$1,140.26
930-024-30	\$1,140.26
930-024-31	\$1,008.03
930-024-32	\$1,140.26
930-024-33	\$1,140.26

Exhibit B**IA No. 2002-1 of CFD No. 90-2 of the
Capistrano Unified School District**

<u>Assessor's Parcel Number</u>	<u>FY 2010-2011 Special Tax</u>
930-024-34	\$1,008.03
930-024-35	\$1,140.26
930-024-36	\$1,140.26
930-024-37	\$1,008.03
930-024-38	\$1,008.03
930-024-39	\$1,065.11
930-024-40	\$875.07
930-024-41	\$979.85
930-024-42	\$1,140.26
930-024-43	\$1,008.03
930-024-44	\$1,008.03
930-024-45	\$1,065.11
930-024-46	\$875.07
930-024-47	\$979.85
930-024-48	\$979.85
930-024-49	\$875.07
930-024-50	\$1,065.11
930-024-51	\$1,008.03
930-024-52	\$1,008.03
930-024-53	\$1,140.26
930-024-54	\$979.85
930-024-55	\$875.07
930-024-56	\$1,065.11
930-024-57	\$1,008.03
930-024-58	\$1,008.03
930-024-59	\$1,140.26
930-024-60	\$1,140.26
930-024-61	\$1,008.03
930-024-62	\$1,008.03
930-024-63	\$1,065.11
930-024-64	\$875.07
930-024-65	\$979.85
930-024-66	\$1,140.26
930-024-67	\$1,008.03
930-024-68	\$1,008.03
930-024-69	\$1,065.11
930-024-70	\$875.07
930-024-71	\$979.85
930-024-72	\$979.85
930-024-73	\$875.07
930-024-74	\$1,065.11
930-024-75	\$1,008.03
930-024-76	\$1,008.03
930-024-77	\$1,140.26
930-024-78	\$979.85
930-024-79	\$875.07
930-024-80	\$1,065.11
930-024-81	\$1,008.03
930-024-82	\$1,008.03

Exhibit B**IA No. 2002-1 of CFD No. 90-2 of the
Capistrano Unified School District**

<u>Assessor's Parcel Number</u>	<u>FY 2010-2011 Special Tax</u>
930-024-83	\$1,140.26
930-024-84	\$979.85
930-024-85	\$875.07
930-024-86	\$1,065.11
930-024-87	\$1,008.03
930-024-88	\$1,008.03
930-024-89	\$1,008.03
930-024-90	\$1,140.26
930-024-91	\$1,145.32
930-024-92	\$1,359.21
930-024-93	\$1,213.25
930-024-94	\$1,213.25
930-024-95	\$1,359.21
930-024-96	\$1,145.32
930-024-97	\$1,145.32
930-024-98	\$1,359.21
930-024-99	\$1,213.25
930-025-00	\$1,213.25
930-025-01	\$1,359.21
930-025-02	\$1,145.32
930-025-03	\$1,145.32
930-025-04	\$1,359.21
930-025-05	\$1,213.25
930-025-06	\$1,213.25
930-025-07	\$1,359.21
930-025-08	\$1,145.32
930-025-09	\$1,145.32
930-025-10	\$1,359.21
930-025-11	\$1,213.25
930-025-12	\$1,213.25
930-025-13	\$1,359.21
930-025-14	\$1,145.32
930-025-15	\$1,145.32
930-025-16	\$1,359.21
930-025-17	\$1,213.25
930-025-18	\$1,213.25
930-025-19	\$1,359.21
930-025-20	\$1,145.32
930-025-21	\$933.60
930-025-22	\$1,145.32
930-025-23	\$1,359.21
930-025-24	\$1,213.25
930-025-25	\$1,213.25
930-025-26	\$1,359.21
930-025-27	\$1,145.32
930-025-28	\$933.60
930-025-29	\$1,145.32
930-025-30	\$1,359.21
930-025-31	\$1,213.25

Exhibit B**IA No. 2002-1 of CFD No. 90-2 of the
Capistrano Unified School District**

<u>Assessor's Parcel Number</u>	<u>FY 2010-2011 Special Tax</u>
930-025-32	\$1,213.25
930-025-33	\$1,359.21
930-025-34	\$1,145.32
930-025-35	\$1,145.32
930-025-36	\$1,359.21
930-025-37	\$1,213.25
930-025-38	\$1,213.25
930-025-39	\$1,359.21
930-025-40	\$1,145.32
930-025-41	\$1,145.32
930-025-42	\$1,359.21
930-025-43	\$1,213.25
930-025-44	\$1,213.25
930-025-45	\$1,359.21
930-025-46	\$1,145.32
930-025-47	\$933.60
930-025-48	\$1,145.32
930-025-49	\$723.32
930-025-50	\$1,213.25
930-025-51	\$1,213.25
930-025-52	\$1,359.21
930-025-53	\$1,087.51
930-025-54	\$933.60
930-025-55	\$933.60
930-025-56	\$1,087.51
930-025-57	\$1,087.51
930-025-58	\$723.32
930-025-59	\$1,213.25
930-025-60	\$1,213.25
930-025-61	\$723.32
930-025-62	\$1,087.51
930-025-63	\$1,087.51
930-025-64	\$933.60
930-025-65	\$933.60
930-025-66	\$1,087.51
930-025-67	\$1,087.51
930-025-68	\$723.32
930-025-69	\$1,213.25
930-025-70	\$1,213.25
930-025-71	\$1,359.21
930-025-72	\$1,087.51
930-025-73	\$1,087.51
930-025-74	\$933.60
930-025-85	\$979.85
930-025-86	\$875.07
930-025-87	\$1,065.11
930-025-88	\$1,065.11
930-025-89	\$1,008.03
930-025-90	\$1,008.03

Exhibit B**IA No. 2002-1 of CFD No. 90-2 of the
Capistrano Unified School District**

<u>Assessor's Parcel Number</u>	<u>FY 2010-2011 Special Tax</u>
930-025-91	\$1,008.03
930-025-92	\$1,140.26
930-025-93	\$1,140.26
930-025-94	\$1,008.03
930-025-95	\$1,008.03
930-025-96	\$1,008.03
930-025-97	\$1,065.11
930-025-98	\$1,065.11
930-025-99	\$875.07
930-026-00	\$979.85
930-026-01	\$1,140.26
930-026-02	\$1,008.03
930-026-03	\$1,008.03
930-026-04	\$1,008.03
930-026-05	\$1,065.11
930-026-06	\$1,065.11
930-026-07	\$875.07
930-026-08	\$979.85
930-026-09	\$979.85
930-026-10	\$875.07
930-026-11	\$1,065.11
930-026-12	\$1,008.03
930-026-13	\$1,008.03
930-026-14	\$1,140.26
930-026-15	\$979.85
930-026-16	\$875.07
930-026-17	\$1,065.11
930-026-18	\$1,008.03
930-026-19	\$1,008.03
930-026-20	\$1,140.26
930-026-21	\$1,140.26
930-026-22	\$1,008.03
930-026-23	\$1,008.03
930-026-24	\$1,065.11
930-026-25	\$875.07
930-026-26	\$979.85
930-026-27	\$1,140.26
930-026-28	\$1,008.03
930-026-29	\$1,008.03
930-026-30	\$1,065.11
930-026-31	\$875.07
930-026-32	\$979.85
930-026-33	\$979.85
930-026-34	\$875.07
930-026-35	\$1,065.11
930-026-36	\$1,008.03
930-026-37	\$1,008.03
930-026-38	\$1,140.26
930-026-39	\$979.85

Exhibit B**IA No. 2002-1 of CFD No. 90-2 of the
Capistrano Unified School District**

<u>Assessor's Parcel Number</u>	<u>FY 2010-2011 Special Tax</u>
930-026-40	\$875.07
930-026-41	\$1,065.11
930-026-42	\$1,008.03
930-026-43	\$1,008.03
930-026-44	\$1,140.26
930-026-45	\$1,140.26
930-026-46	\$1,008.03
930-026-47	\$1,008.03
930-026-48	\$1,065.11
930-026-49	\$875.07
930-026-50	\$979.85
930-026-51	\$1,140.26
930-026-52	\$1,008.03
930-026-53	\$1,008.03
930-026-54	\$1,065.11
930-026-55	\$875.07
930-026-56	\$979.85
930-026-57	\$1,140.26
930-026-58	\$1,008.03
930-026-59	\$1,008.03
930-026-60	\$1,065.11
930-026-61	\$875.07
930-026-62	\$979.85
930-026-63	\$1,140.26
930-026-64	\$1,008.03
930-026-65	\$1,008.03
930-026-66	\$1,065.11
930-026-67	\$875.07
930-026-68	\$979.85
930-026-69	\$979.85
930-026-70	\$875.07
930-026-71	\$1,065.11
930-026-72	\$1,008.03
930-026-73	\$1,140.26
930-026-74	\$1,140.26
930-026-75	\$1,008.03
930-026-76	\$1,065.11
930-026-77	\$875.07
930-026-78	\$979.85
930-026-79	\$1,140.26
930-026-80	\$1,008.03
930-026-81	\$1,065.11
930-026-82	\$875.07
930-026-83	\$979.85
930-026-84	\$933.60
930-026-85	\$1,145.32
930-026-86	\$1,145.32
930-026-87	\$1,359.21
930-026-88	\$1,213.25

Exhibit B**IA No. 2002-1 of CFD No. 90-2 of the
Capistrano Unified School District**

<u>Assessor's Parcel Number</u>	<u>FY 2010-2011 Special Tax</u>
930-026-89	\$1,213.25
930-026-90	\$1,359.21
930-026-91	\$1,145.32
930-026-92	\$1,145.32
930-026-93	\$933.60
930-026-94	\$933.60
930-026-95	\$1,145.32
930-026-96	\$1,145.32
930-026-97	\$1,359.21
930-026-98	\$1,213.25
930-026-99	\$1,213.25
930-027-00	\$1,359.21
930-027-01	\$1,145.32
930-027-02	\$1,145.32
930-027-03	\$933.60
930-027-04	\$933.60
930-027-05	\$1,145.32
930-027-06	\$1,145.32
930-027-07	\$1,359.21
930-027-08	\$1,213.25
930-027-09	\$1,213.25
930-027-10	\$1,359.21
930-027-11	\$1,145.32
930-027-12	\$1,145.32
930-027-13	\$933.60
930-027-14	\$1,145.32
930-027-15	\$1,359.21
930-027-16	\$1,213.25
930-027-17	\$1,213.25
930-027-18	\$1,359.21
930-027-19	\$1,145.32
930-027-20	\$1,145.32
930-027-21	\$1,359.21
930-027-22	\$1,213.25
930-027-23	\$1,213.25
930-027-24	\$1,359.21
930-027-25	\$1,145.32
930-027-26	\$1,145.32
930-027-27	\$1,359.21
930-027-28	\$1,213.25
930-027-29	\$1,213.25
930-027-30	\$1,359.21
930-027-31	\$1,145.32
933-041-06	\$1,273.22
933-041-07	\$903.97
933-041-08	\$1,245.76
933-041-09	\$1,273.22
933-041-10	\$903.97
933-041-11	\$1,245.76

Exhibit B**IA No. 2002-1 of CFD No. 90-2 of the
Capistrano Unified School District**

<u>Assessor's Parcel Number</u>	<u>FY 2010-2011 Special Tax</u>
933-041-12	\$1,273.22
933-041-13	\$903.97
933-041-14	\$1,245.76
933-041-15	\$1,273.22
933-041-16	\$903.97
933-041-17	\$1,245.76
933-041-18	\$1,273.22
933-041-19	\$903.97
933-041-20	\$1,245.76
933-041-21	\$1,273.22
933-041-22	\$903.97
933-041-23	\$1,245.76
933-041-24	\$1,273.22
933-041-25	\$903.97
933-041-26	\$1,245.76
933-041-27	\$1,273.22
933-041-28	\$903.97
933-041-29	\$1,245.76
933-041-30	\$1,245.76
933-041-31	\$903.97
933-041-32	\$1,273.22
933-041-33	\$1,273.22
933-041-34	\$903.97
933-041-35	\$1,245.76
933-041-36	\$1,273.22
933-041-37	\$903.97
933-041-38	\$1,245.76
933-041-39	\$1,273.22
933-041-40	\$903.97
933-041-41	\$1,245.76
933-041-42	\$1,273.22
933-041-43	\$903.97
933-041-44	\$1,245.76
933-041-45	\$1,245.76
933-041-46	\$903.97
933-041-47	\$1,273.22
933-041-48	\$1,245.76
933-041-49	\$903.97
933-041-50	\$1,273.22
933-041-51	\$1,245.76
933-041-52	\$903.97
933-041-53	\$1,273.22
933-041-54	\$1,245.76
933-041-55	\$903.97
933-041-56	\$1,273.22
933-041-57	\$1,245.76
933-041-58	\$903.97
933-041-59	\$1,273.22
933-041-60	\$1,245.76

Exhibit B**IA No. 2002-1 of CFD No. 90-2 of the
Capistrano Unified School District**

<u>Assessor's Parcel Number</u>	<u>FY 2010-2011 Special Tax</u>
933-041-61	\$903.97
933-041-62	\$1,273.22
933-041-63	\$1,245.76
933-041-64	\$903.97
933-041-65	\$1,273.22
933-041-66	\$1,245.76
933-041-67	\$903.97
933-041-68	\$1,273.22
933-041-69	\$1,245.76
933-041-70	\$903.97
933-041-71	\$1,273.22
933-041-72	\$1,245.76
933-041-73	\$903.97
933-041-74	\$1,273.22
933-041-75	\$1,245.76
933-041-76	\$903.97
933-041-77	\$1,273.22
933-041-78	\$1,245.76
933-041-79	\$903.97
933-041-80	\$1,273.22
933-041-81	\$1,245.76
933-041-82	\$903.97
933-041-83	\$1,273.22
933-041-84	\$1,273.22
933-041-85	\$903.97
933-041-86	\$1,245.76
933-041-87	\$1,273.22
933-041-88	\$903.97
933-041-89	\$1,245.76
933-041-90	\$1,273.22
933-041-91	\$903.97
933-041-92	\$1,245.76
933-041-93	\$1,273.22
933-041-94	\$903.97
933-041-95	\$1,245.76
933-041-96	\$1,273.22
933-041-97	\$903.97
933-041-98	\$1,245.76
933-041-99	\$1,273.22
933-042-00	\$903.97
933-042-01	\$1,245.76
933-042-02	\$1,273.22
933-042-03	\$903.97
933-042-04	\$1,245.76
933-042-05	\$1,245.76
933-042-06	\$903.97
933-042-07	\$1,273.22
933-042-08	\$1,273.22
933-042-09	\$903.97

Exhibit B**IA No. 2002-1 of CFD No. 90-2 of the
Capistrano Unified School District**

<u>Assessor's Parcel Number</u>	<u>FY 2010-2011 Special Tax</u>
933-042-10	\$1,245.76
933-042-11	\$1,273.22
933-042-12	\$903.97
933-042-13	\$1,245.76
933-042-14	\$1,273.22
933-042-15	\$903.97
933-042-16	\$1,245.76
933-042-17	\$1,273.22
933-042-18	\$903.97
933-042-19	\$1,245.76
933-042-20	\$1,273.22
933-042-21	\$903.97
933-042-22	\$1,245.76
933-042-23	\$1,273.22
933-042-24	\$903.97
933-042-25	\$1,245.76
933-042-26	\$1,273.22
933-042-27	\$903.97
933-042-28	\$1,245.76
933-042-29	\$1,273.22
933-042-30	\$903.97
933-042-31	\$1,245.76
933-042-32	\$1,273.22
933-042-33	\$903.97
933-042-34	\$1,245.76
933-042-35	\$1,273.22
933-042-36	\$903.97
933-042-37	\$1,245.76
933-042-38	\$1,273.22
933-042-39	\$903.97
933-042-40	\$1,245.76
933-042-41	\$1,273.22
933-042-42	\$903.97
933-042-43	\$1,245.76
933-042-44	\$1,273.22
933-042-45	\$903.97
933-042-46	\$1,245.76
933-042-47	\$1,273.22
933-042-48	\$903.97
933-042-49	\$1,245.76
Total FY 2010-2011 Special Tax Levy	\$3,591,096.11
Total Number of Parcels Taxed	1,754