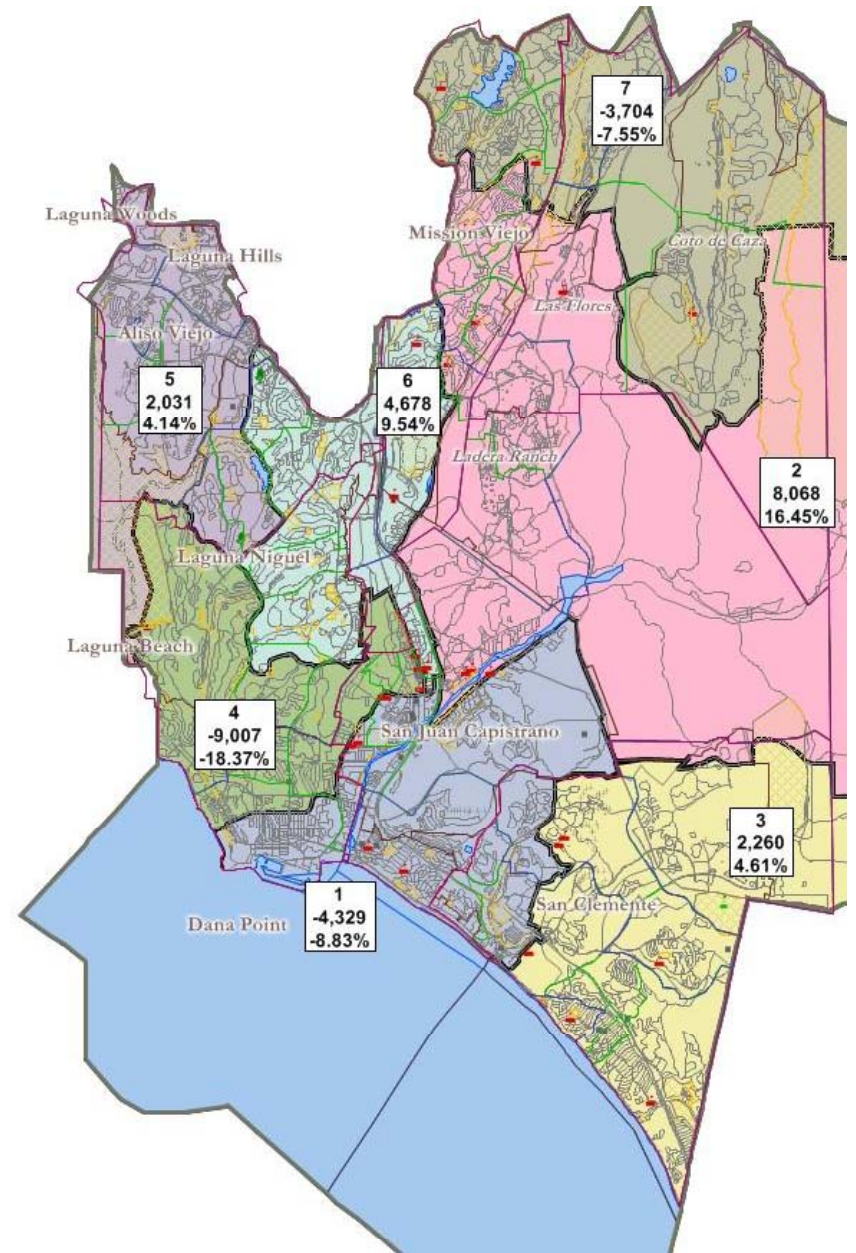


# CAPISTRANO UNIFIED SCHOOL DISTRICT

## 2011 REDISTRICTING



December 12,  
2011

National Demographics Corporation

# Capistrano Unified Demographics

2

## 2010 Census data:

### □ Population

- 2010 Census total: **343,291**
  - 17.2 % Hispanic
  - 70.4 % Non-Hispanic white
  - 12.4 % Other

- 2010 Census Voting Age Population
  - 15.1 % Hispanic
  - 73.1 % Non-Hispanic White
  - 11.8 % Other

## American Community Survey data:

- Citizen Voting Age Population (CVAP)
  - 9.7 % Hispanic
  - 80.5 % Non-Hispanic White
  - 10.8 % Other

## California Statewide Database:

- Surname Registration & Turnout
  - 8.3 % Hispanic of Registration
  - 6.8 % Hispanic of Turnout

*No Majority-Hispanic CVAP Area possible.*

December 12, 2011

# Criteria

3

## Federal Laws:

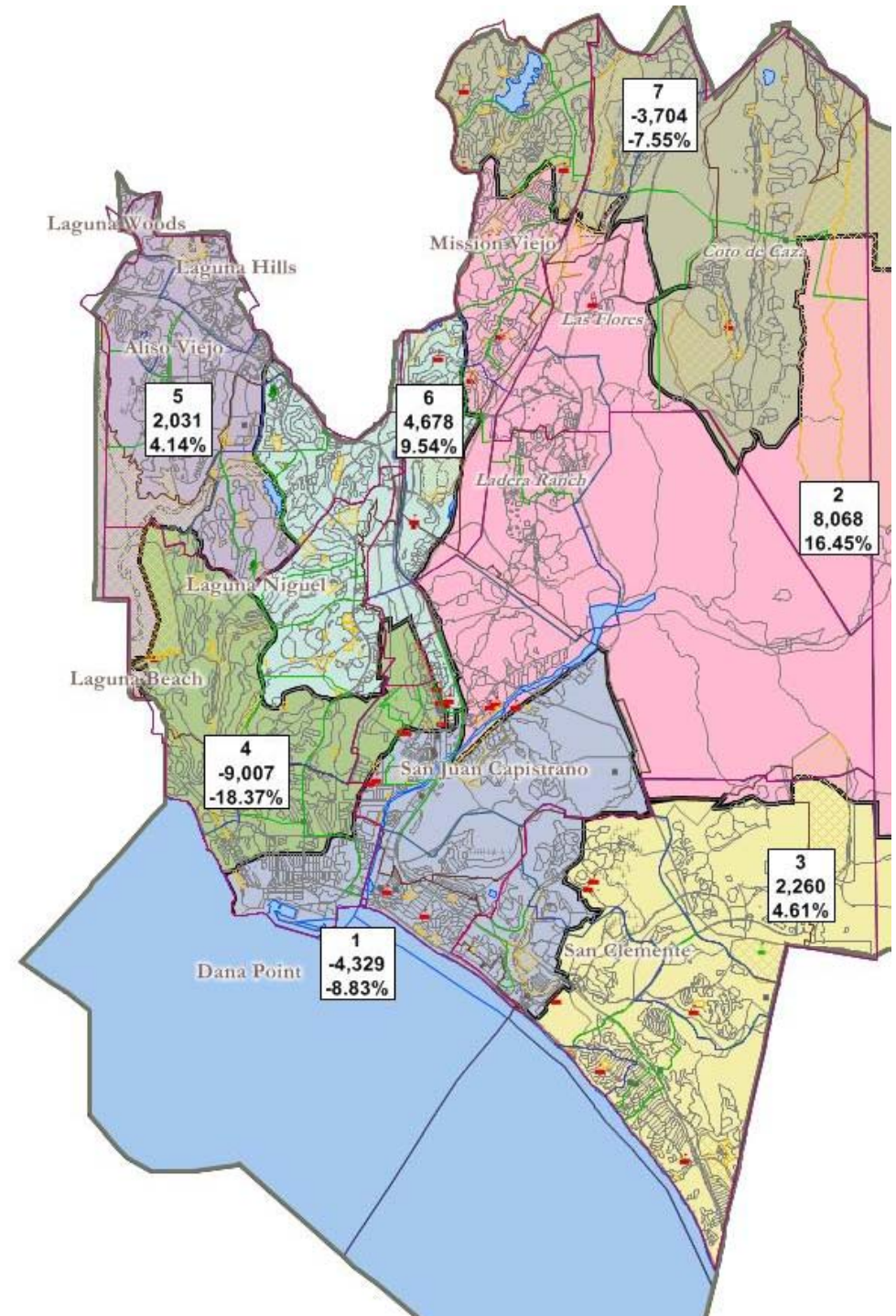
(“Must-Do”)

- Equal Population
- Federal Voting Rights Act
- No racial gerrymandering

## Traditional Redistricting Criteria

(“Balancing”)

- Communities of interest
- Visible (Natural & man-made) boundaries
- Compactness & contiguity



# Schedule

4

- Nov. 19: Board Review of demographics, schedule, and criteria
- Dec. 12: Presentation & Review of Draft Plans
- Jan. 9: Presentation & Review of Updated Draft Plans
- Jan. 25: Presentation & Review of Updated Draft Plans (possible adoption)
- Feb. 13: (if needed) Adoption of Trustee Areas Plan

# What these plans are:

5

- Starting points on the road to a final plan
- Demonstrations of the results when different criteria are emphasized
  - ▣ Each plan has a significantly different focus
- Plans drawn by the consultant, using the Board's criteria, to stimulate discussion, ideas and direction

# What these plans are not:

6

- These are not final plans. Considerable revisions are likely prior to arriving to a final plan.
- These are not exclusive. If the public or Board like parts of one plan and parts of another, in many places the different parts can be put together into a new plan.
- These do not reflect any directions from any individual trustee or any groups of trustees. These were drawn by the consultant using only the criteria for guidance. These maps start the discussion, which now proceeds to public and Board input and direction.



# Desired Feedback / Action

7

- Public and Board comment on the plans
  - ▣ Which approaches should be abandoned?
  - ▣ Which make the both starting points for revisions?
  - ▣ Which parts of each plan are appealing and should be incorporated into ongoing working drafts?
  
- Direction to consultant on plan revisions/tests to prepare for review at the next meeting.

# DRAFT PLANS A - E

December 12,  
2011

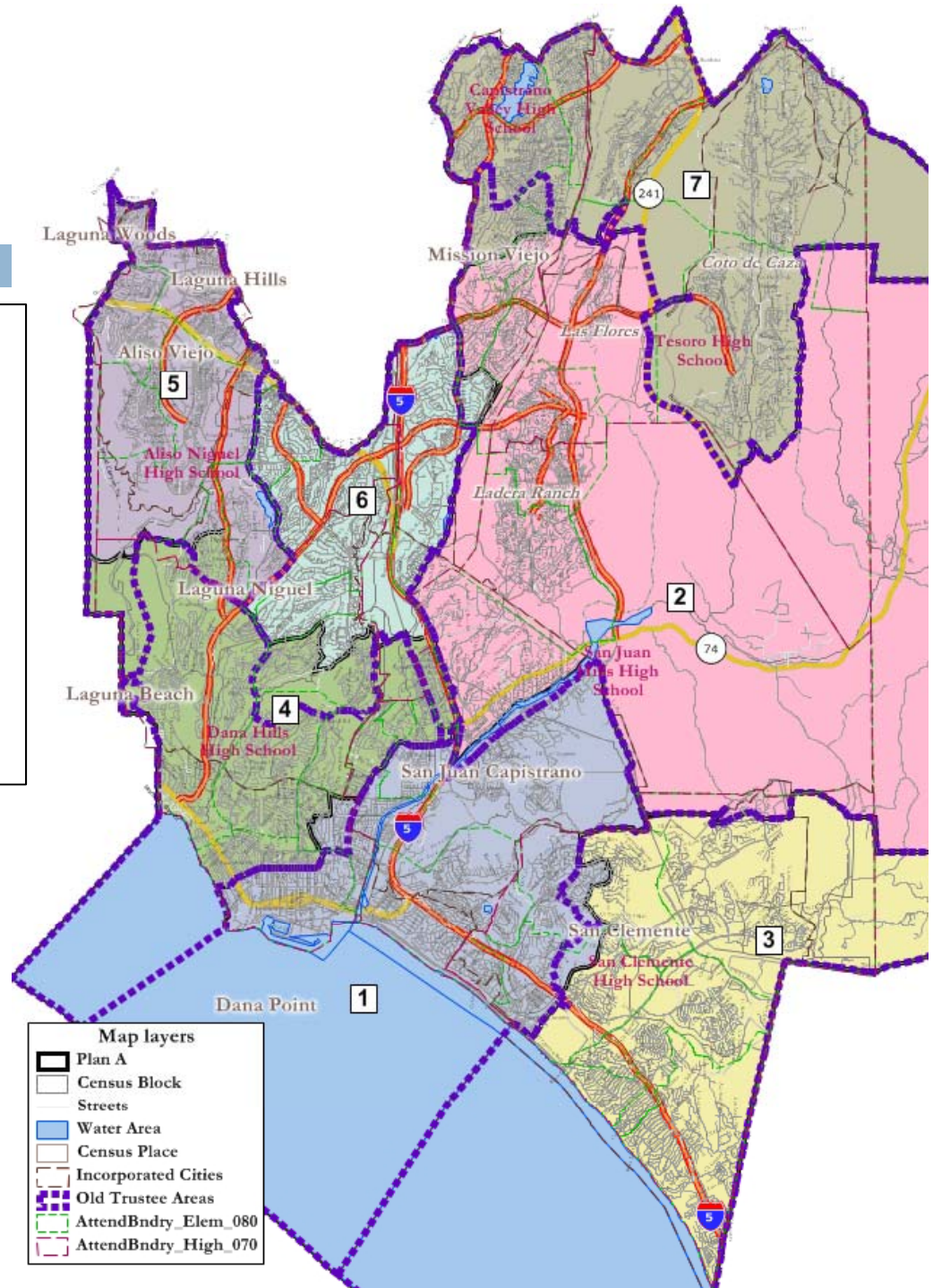


# Plan A

9

## Summary:

- “Least Change” plan
  - (old lines shown in purple dashes)
- Relatively Compact
- Not drawn looking at incumbents, but no incumbents paired
  - (No surprise, given focus on smallest possible changes to existing from-trustee areas)

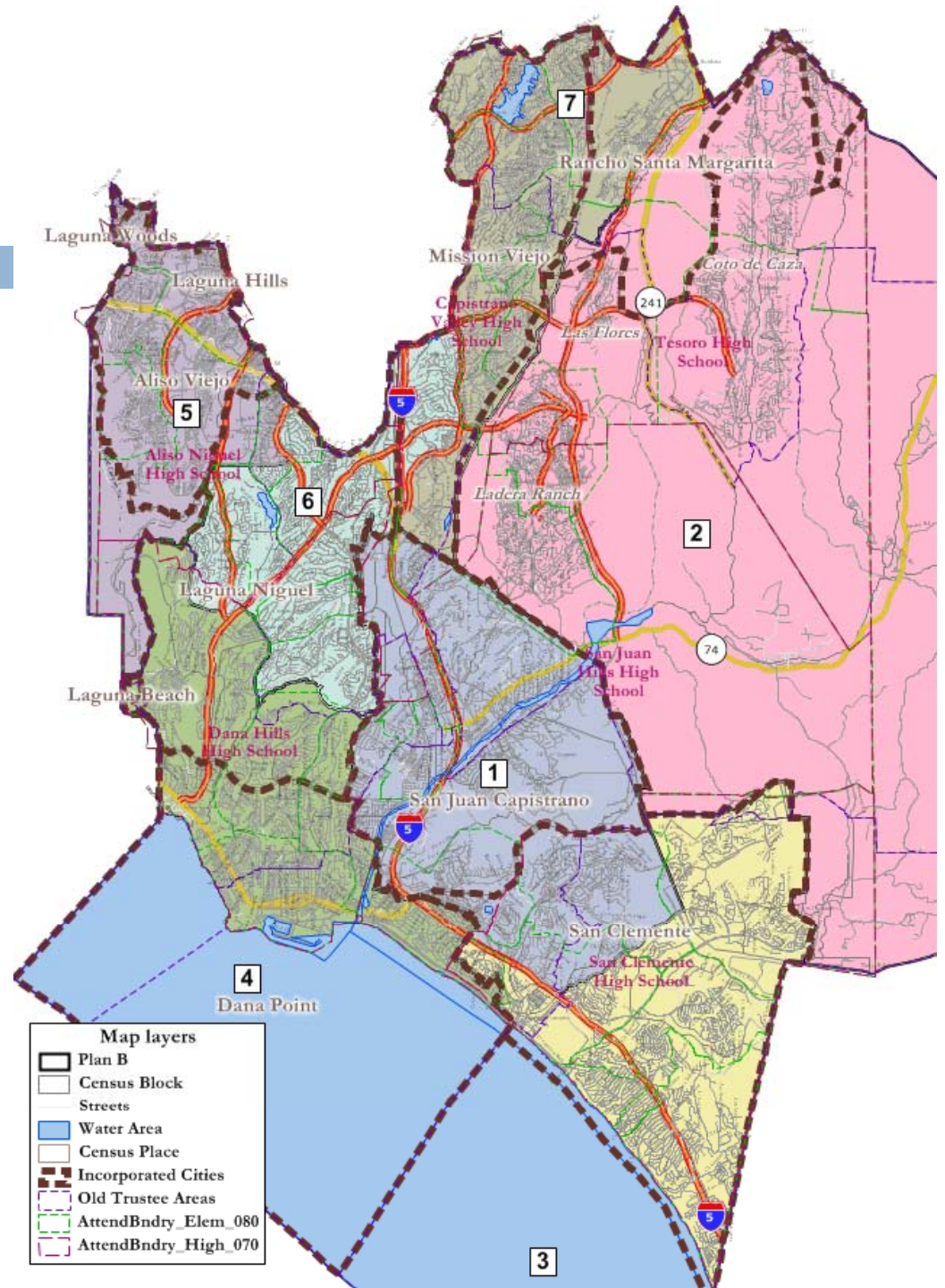


# Plan B

10

## Summary:

- “City-Focused” plan
  - City borders shown as brown dashes
- Less compact due to non-compact city borders
- Not drawn looking at incumbents
  - Two trustees in Area 4
  - No trustee in Area 2



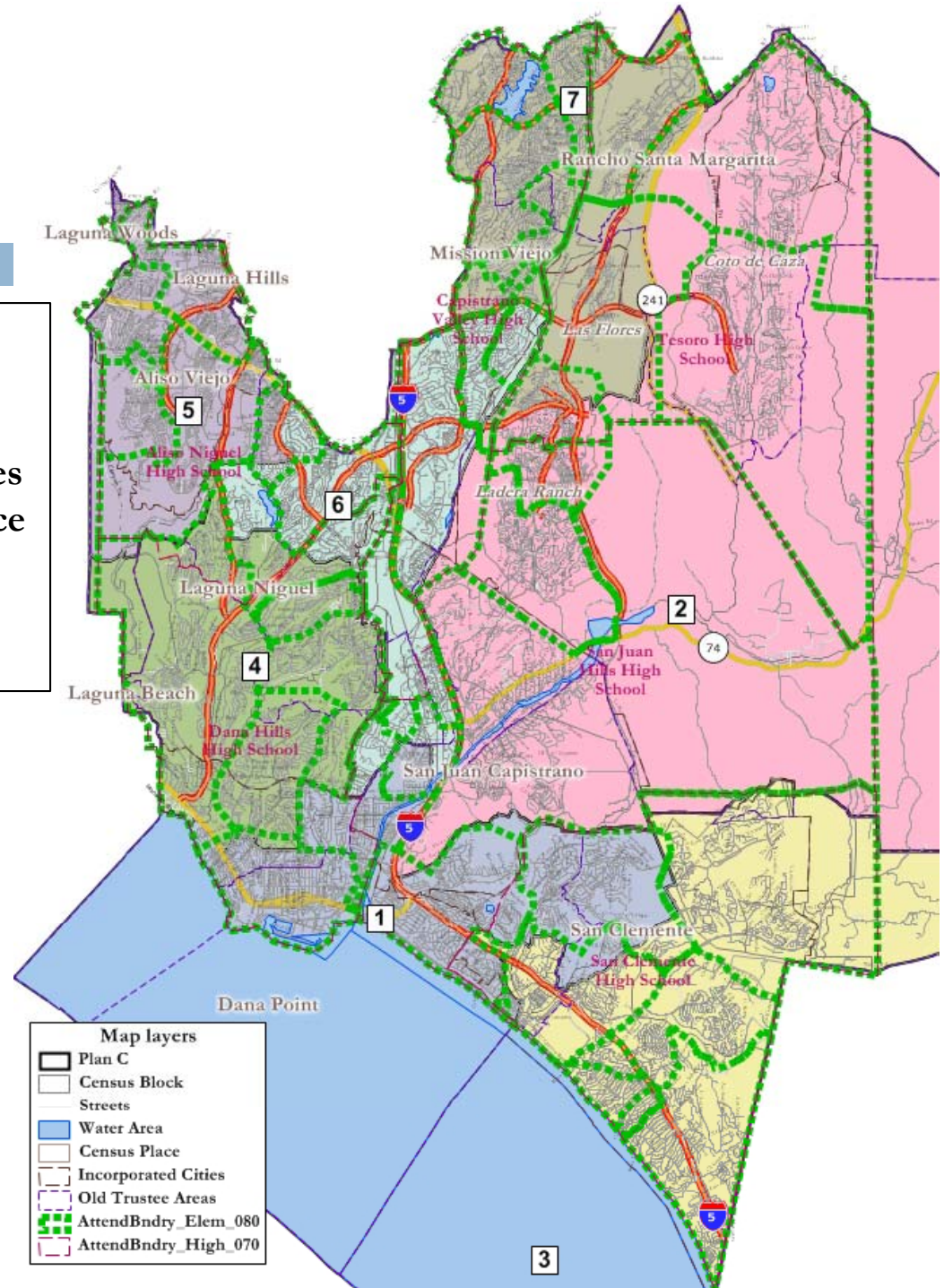


# Plan C

11

## Summary:

- “Elementary Attendance Areas” plan
  - Attendance areas shown as green dashes
- Less compact due to non-compact attendance area borders
- Not drawn looking at incumbents
  - No trustees paired

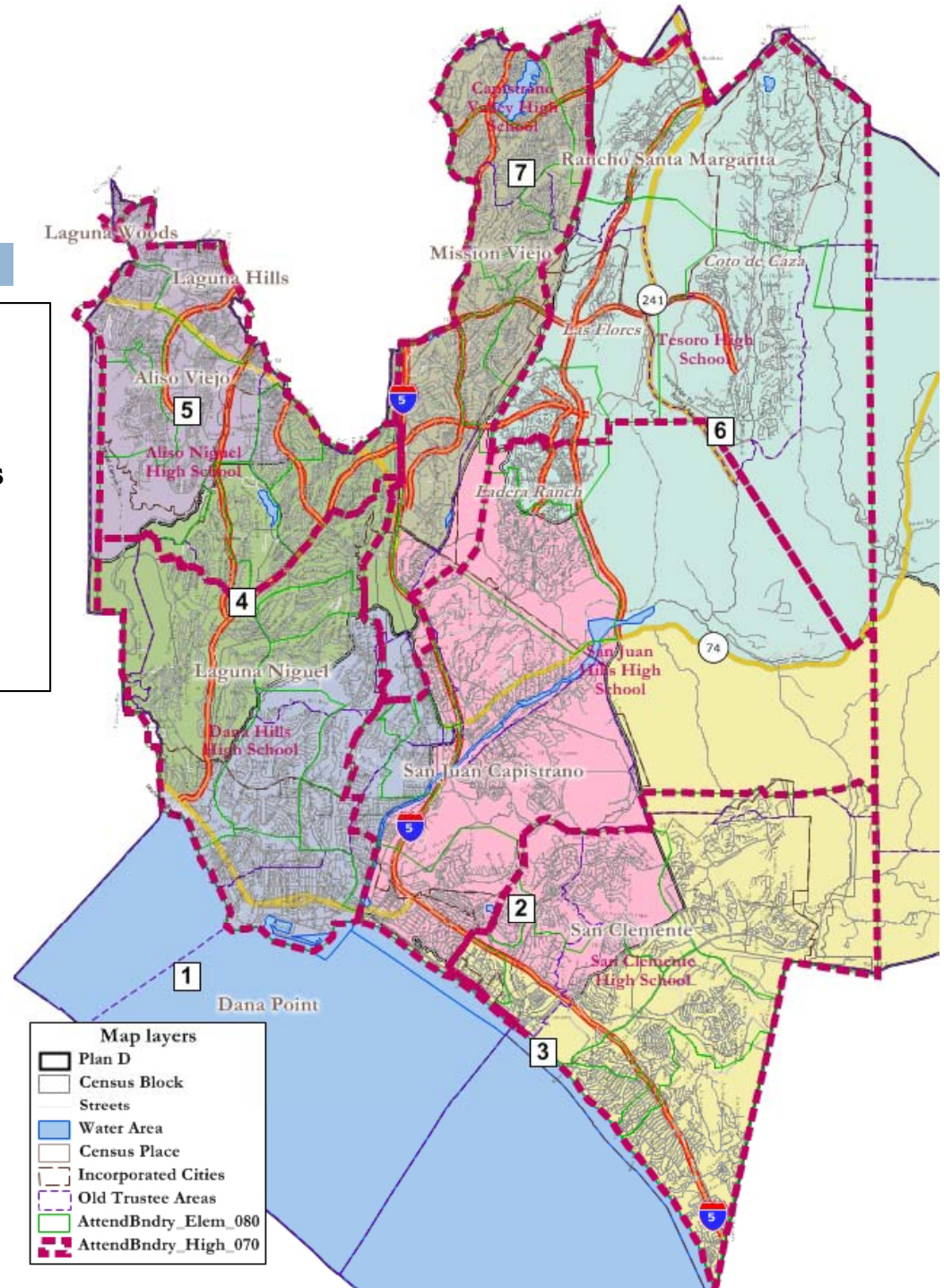


# Plan D

12

## Summary:

- “High School Attendance Areas” plan
  - Attendance areas shown as pink dashes
- Not drawn looking at incumbents
  - 2 trustees in Area 7
  - No trustee in Area 6



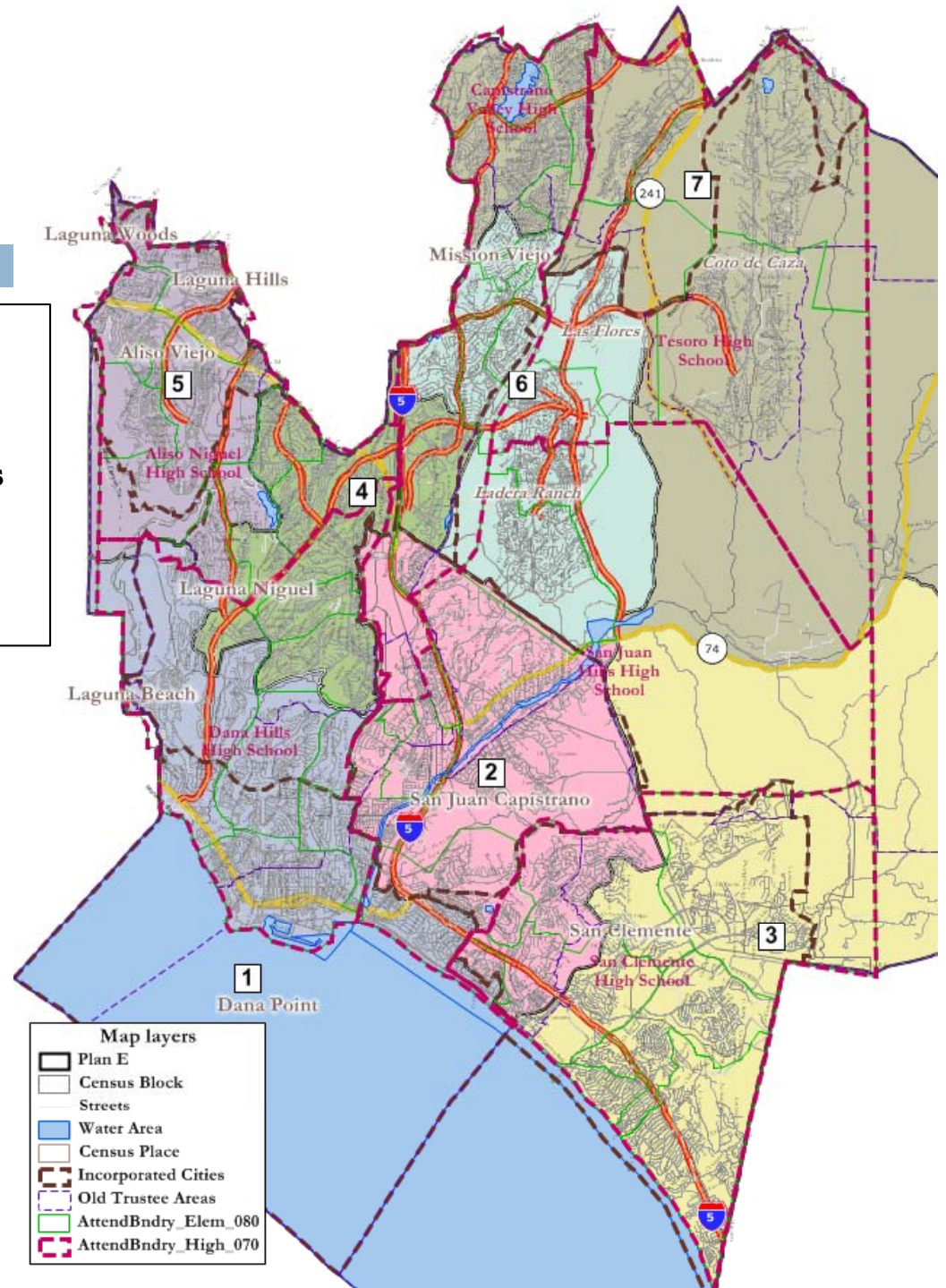


# Plan E

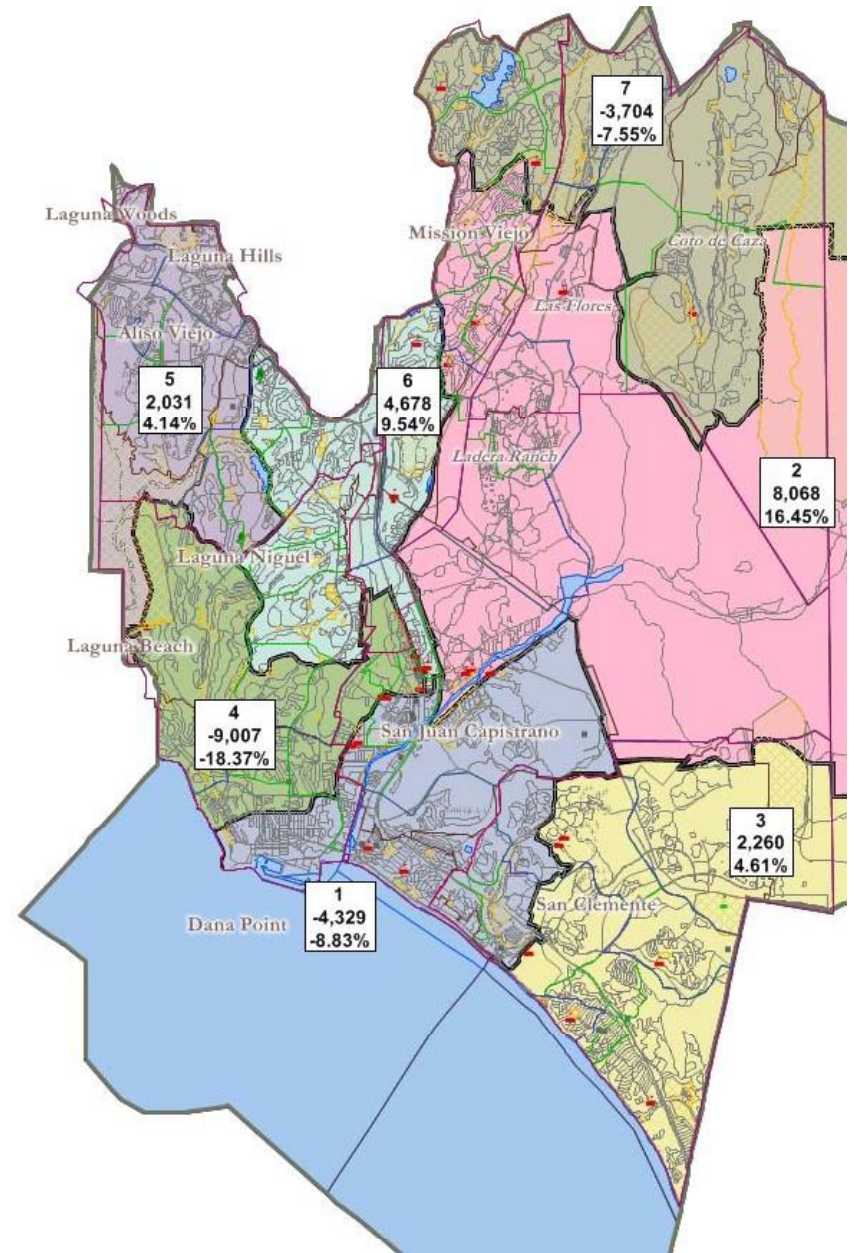
13

## Summary:

- “Cities & High School Attendance Areas”
  - Attendance areas shown as pink dashes
  - Cities shown as brown lines
- No incumbents paired



# COMMENTS, REQUESTS AND/OR DIRECTIONS?



December 12,  
2011