

**CAPISTRANO UNIFIED SCHOOL DISTRICT
COMMUNITY FACILITIES DISTRICT
No. 90-2**

August 5, 2013

*Public Finance
Public Private Partnerships
Urban Economics*

Newport Beach

Fresno

Riverside

San Francisco

Chicago

Dallas

**ADMINISTRATION REPORT
FISCAL YEAR 2013-2014**

**CAPISTRANO UNIFIED SCHOOL DISTRICT
COMMUNITY FACILITIES DISTRICT NO. 90-2**

Prepared for

CAPISTRANO UNIFIED SCHOOL DISTRICT
33122 Valle Road
San Juan Capistrano, California 92675

Prepared by

DAVID TAUSSIG & ASSOCIATES, INC.
5000 Birch Street, Suite 6000
Newport Beach, California 92660
(949) 955-1500

Table of Contents

<i>Section</i>	<i>Page</i>
<i>Introduction</i>	1
<i>I. Special Tax Classifications and Development Update</i>	3
Special Tax Classifications	3
Development Update	3
<i>II. Sources and Applications of Funds</i>	5
Description of Funds and Accounts	5
Sources and Uses of Funds (Series 2006)	9
Account Balances (Series 2006)	10
<i>III. Fiscal Year 2012-2013 Special Tax Levy</i>	11
<i>IV. Fiscal Year 2013-2014 Special Tax Requirement</i>	12
<i>V. Method of Apportionment</i>	14
Maximum Special Taxes	14
Apportionment of Special Taxes	14

EXHIBITS

- Exhibit A** - Boundary Map
- Exhibit B** - Summary of Transactions to Funds and Accounts for Fiscal Year 2012-2013
- Exhibit C** - Special Tax Roll for Fiscal Year 2013-2014

Introduction

This report provides an analysis of the financial and administrative obligations of Community Facilities District No. 90-2 (“CFD No. 90-2”) of the Capistrano Unified School District (the “School District”). In October 2001, the Series 2001 Special Tax Bonds of CFD No. 90-2 (the “2001 Bonds”) were issued in the amount of \$23,050,000. The following year, in October 2002, the Series 2002 Special Tax Bonds (the “2002 Bonds,” and together with the 2001 Bonds, the “Prior Bonds”) of CFD No. 90-2 were issued in the amount of \$17,605,000. The Prior Bonds were refunded in May 2006 with the Series 2006 Special Tax Refunding Bonds of CFD No. 90-2 (the “Bonds”) in the amount of \$44,980,000.

CFD No. 90-2 is a legally constituted governmental entity established under the Mello-Roos Community Facilities Act of 1982, (the “Act”) as amended. The Act provides an alternative method for the financing of certain public capital facilities and services. Specifically, CFD No. 90-2 is authorized to issue up to \$50,000,000 in bonds. The proceeds of the Prior Bonds are to be used for acquiring, constructing, expanding, or rehabilitating facilities, including school facilities, land and related appurtenances necessary to meet increased demands placed on the School District as a result of the development of the community facilities district.

The bonded indebtedness of CFD No. 90-2 is both secured and repaid through the annual levy and collection of special taxes from all property subject to the tax within the community facilities district. In calculating the special tax liability for fiscal year 2013-2014, this report not only examines the financial obligations of the current fiscal year, but also analyzes the amount of new development which has occurred within the boundaries of the community facilities district.

A map showing the property in CFD No. 90-2 and Improvement Area No. 2002-1 of CFD No. 90-2 is included in Exhibit A.

This report is organized into the following sections:

Section I

Section I provides an update of the development activity occurring within CFD No. 90-2. All new building permit activity is identified, including cumulative figures for “Developed Property.”

Section II

Section II examines the financial activity in the funds and accounts established pursuant to the Bond Indenture between CFD No. 90-2 and the fiscal agent dated as of June 1, 2006 (the “Indenture”). A year-to-date summary illustrating all disbursements, special tax receipts and interest earnings is provided.

Section III

Section III analyzes the fiscal year 2012-2013 special tax levy.

Section IV

Section IV determines the financial obligations of CFD No. 90-2 for fiscal year 2013-2014.

Section V

Section V reviews the methodology used to apportion the special tax requirement to Developed and Undeveloped Property.

I. Special Tax Classifications and Development Update

Special Tax Classifications

The methodology employed to calculate and apportion the special tax is contained in a document entitled the Rate and Method of Apportionment of the Special Tax. The Rate and Method of Apportionment defines eight categories of taxable property, namely “Developed Property,” “Taxable Golf Course Property,” “Taxable Property Owner Association Property,” “Taxable Public Property,” “Taxable Religious Property,” “Taxable Senior Housing Property,” “Undeveloped Non-Residential Property,” and “Undeveloped Property.” The category of Developed Property is in turn divided into two separate special tax classifications based on the type of use of the structure built thereon. A table of the Developed Property and Taxable Senior Housing Property (the first 66 acres of Senior Housing Property is not considered taxable) special tax classifications is shown below.

**Community Facilities District No. 90-2
Developed Property and Taxable Senior Housing
Property Classifications**

Class	Designation
1	Residential Property
2	Taxable Senior Housing Property
3	Non-Residential Property

Developed Property is distinguished from Undeveloped Property by the issuance of a building permit. Specifically, property for which a building permit was issued as of March 1 will be classified as Developed Property in the following fiscal year. For example, all property in CFD No. 90-2 for which building permits were issued prior to March 1, 2013, will be classified as Developed Property in fiscal year 2013-2014. Hence, the development research discussed below focuses on the twelve month period ending March 1, 2013.

Development Update

CFD No. 90-2 encompasses approximately 2,176 gross acres of land located in the portion of southern Orange County known as Talega. Of this acreage, approximately 837 acres are expected to be developed.

Background research was conducted to determine the amount and type of development activity that occurred during the previous fiscal year. Review of the City of San Clemente’s building permit records indicated that prior to March 1, 2013, building permits had been issued for 3,515 residential dwelling units (excluding Senior Housing Property that is not subject to the special tax) and 62.74 acres of Non-Residential Property. A total of 14.04 taxable acres in the district are considered Undeveloped Property and an additional 17.41 acres are considered Undeveloped Non-Residential Property.

The table below lists the aggregate amount of Developed Property and Taxable Senior Housing Property by special tax classification.

**Community Facilities District No. 90-2
Cumulative Developed Property and Taxable Senior Housing Property**

Class	Designation	Number of Units/Acres	Building Square Footage
1	Residential Property	3,515 Units	8,925,777
2	Taxable Senior Housing Property	0	0
3	Commercial Property	62.74 Acres	908,085

II. Sources and Applications of Funds

Description of Funds and Accounts

The Indenture established four funds for CFD No. 90-2. They are the Special Tax Fund, Rebate Fund, Special Reserve Fund, and Acquisition and Construction Fund. Within the Special Tax Fund an Interest Account, a Principal Account, a Redemption Account, a Reserve Account, and an Administrative Expense Account were created. Within the Rebate Fund a Rebate Account and an Alternative Penalty Account were created. Within the Acquisition and Construction Fund a Costs of Issuance Account and a Project Account were created. All funds, accounts, and subaccounts for CFD No. 90-2 are shown in Chart 1.

All special tax receipts are deposited in the Special Tax Fund. Monies in the Special Tax Fund are allocated based on the priority set forth below (see Chart 2):

1. **Administrative Expense Account of the Special Tax Fund** - an amount necessary to defray the School District's cost of administering CFD No. 90-2 for the fiscal year, up to the Administrative Expense Cap, provided however that any amounts in excess of the Administrative Expense Cap shall not take priority over items 2 and 3 below;
2. **Interest Account of the Special Tax Fund** - an amount sufficient to make the interest payment on the next succeeding Interest Payment Date;
3. **Principal Account of the Special Tax Fund** - an amount sufficient to make the principal payment due on the following September 1;
4. **Redemption Account of the Special Tax Fund** - an amount sufficient to make any Sinking Fund Payments due on the Bonds for the fiscal year as well as any principal and premium payments due in relation to the School District's optional redemption of the Bonds;
5. **Reserve Account of the Special Tax Fund** - any amount that may be necessary to replenish this account to the Reserve Requirement;
6. **Rebate Fund** - any money owed to the Department of the United States Treasury as required under the Indenture;
7. **Special Reserve Fund** - all money remaining in the Special Tax Fund after the above six disbursements are made will be transferred to the Special Reserve Fund.

The Reserve Requirement is an amount equal to the lesser of (i) ten percent (10.00%) of the original proceeds of the Bonds, (ii) maximum annual debt service on the Bonds, or (iii) one hundred twenty-five percent (125.00%) of the average annual debt service on the outstanding Bonds.

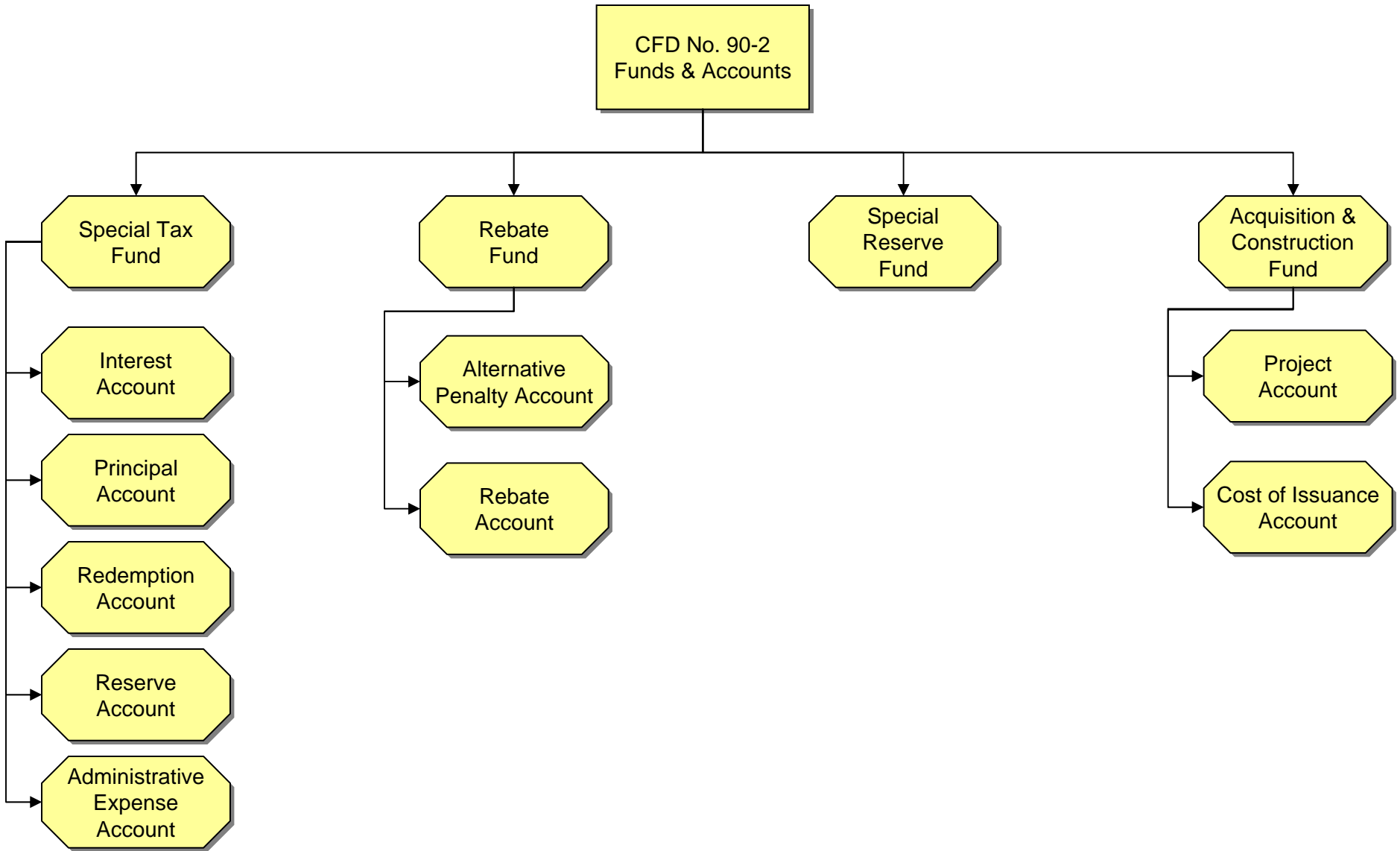
The Acquisition and Construction Fund is used exclusively to pay project costs and cost of issuance for the Bonds. Upon verification that any money amounts remaining in the Acquisition and Construction Fund are no longer needed to pay Project Costs or Costs of Issuance, the Fiscal Agent

will transfer all or such specified portion of the remaining money on deposit in one or more of the accounts in the Acquisition and Construction Fund to the Special Reserve Fund.

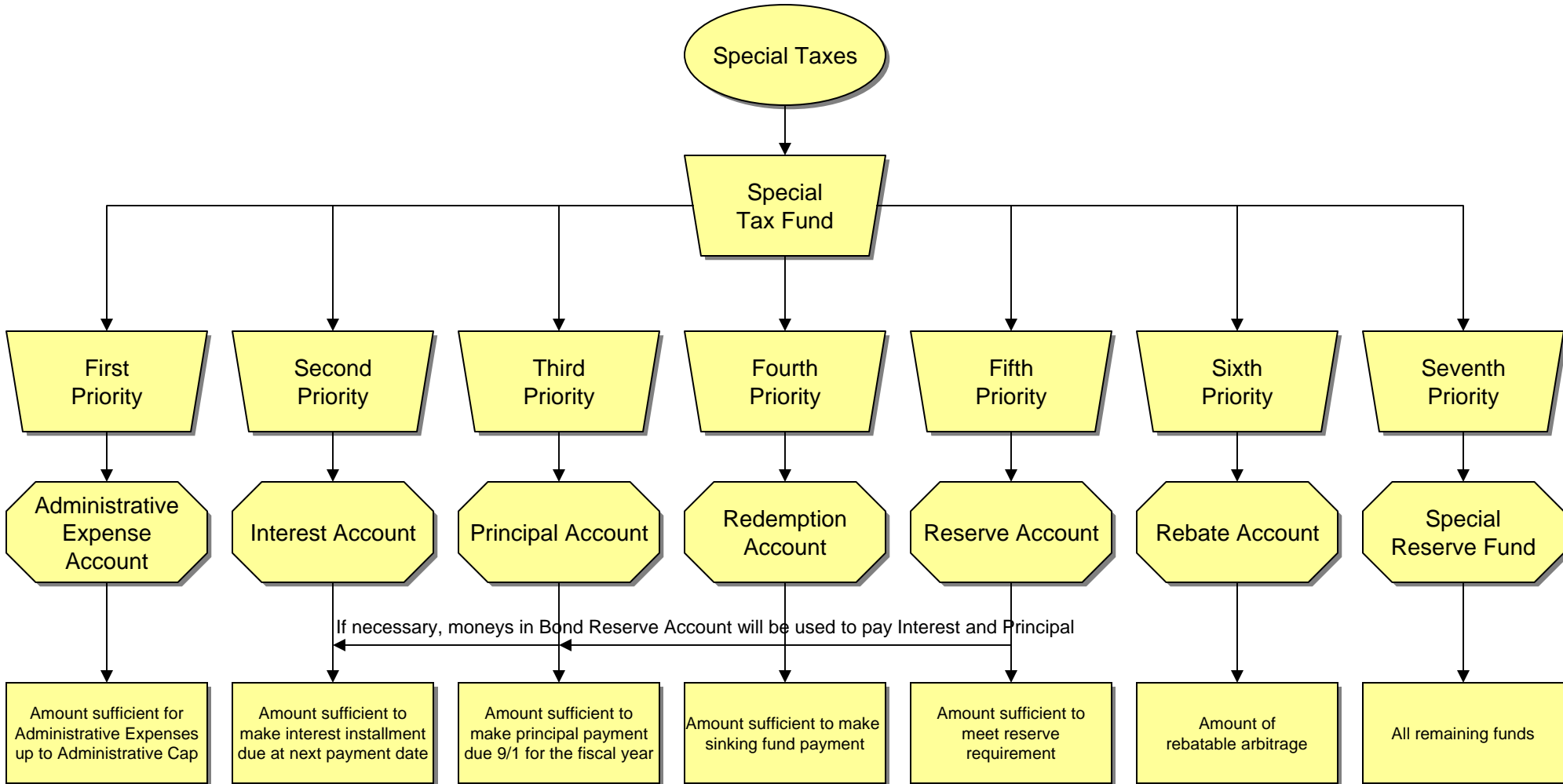
Money held in any of the aforementioned funds, accounts and subaccounts can be invested by the Fiscal Agent at the direction of the School District and in conformance with the limitations set forth in the Indenture. Investment interest earnings on all amounts deposited in the Acquisition and Construction Fund, the Special Reserve Fund, and the Rebate Fund and each Account therein shall be deposited in those respective Funds and Accounts. Investment interest earnings on all amounts deposited in the Reserve Account shall be deposited in the Interest Account of the Special Tax Fund. All other investment earnings shall be deposited in the Acquisition and Construction Fund until the balance therein equals zero and thereafter shall be deposited in the Interest Account of the Special Tax Fund.

The diagram on the following page illustrates the flow of special tax revenues for CFD No. 90-2.

Capistrano Unified School District
Community Facilities District No. 90-2
Series 2006
Funds and Accounts



**Capistrano Unified School District
Community Facilities District No. 90-2
Series 2006
Flow of Funds Diagram**



Sources and Uses of Funds (Series 2006)

CFD No. 90-2's Series 2006 sources of funds for fiscal year 2012-2013 totaled \$4,106,410. This consisted of \$4,000,180 in special taxes, \$105,112 in investment agreement earnings, and \$1,118 in interest earnings not in investment agreements. Interest earnings are shown for each account in the table below.

Table of Interest Earnings

Special Tax Fund	\$229
Administrative Expense Account	\$117
Interest Account	\$0
Principal Account	\$0
Redemption Account	\$0
Reserve Account	\$105,118
Rebate Account	\$0
Acquisition and Construction Fund	\$0
Special Reserve Fund	\$766
Cost of Issuance Account	\$0

Total uses of funds for fiscal year 2012-2013 totaled \$2,764,037. Interest and principal payments on the bonds equaled \$1,853,764 and \$750,000, respectively. Facility acquisition and construction costs totaled \$87,780 and expenses for professional services incurred by CFD No. 90-2 equaled \$72,494.

A more detailed analysis of all transactions within the Series 2006 funds and accounts for the 2012-2013 fiscal year is included as Exhibit B.

Account Balances (Series 2006)

At the close of fiscal year 2012-2013 the various funds and accounts established for the Bonds had the following balances:

Special Tax Fund	\$2,889,005
Administrative Expense Account	\$793,635
Interest Account	\$0
Principal Account	\$0
Redemption Account	\$0
Reserve Account	\$1,970,255
Rebate Fund	\$0
Special Reserve Fund	\$5,090,802
Cost of Issuance Account	\$0
Acquisition and Construction Fund	\$0

III. Fiscal Year 2012-2013 Special Tax Levy

The aggregate special tax levy for fiscal year 2012-2013 equaled \$3,874,452. As of July 25, 2013, \$3,825,794 in special taxes had been collected by the County. The remaining \$48,658 in special taxes are delinquent, resulting in a delinquency rate of 1.26 percent.

As a participant in the Teeter Program, the School District will receive an apportionment from the County equal to the delinquent unpaid special taxes for fiscal year 2012-2013. This apportionment is anticipated to occur early in fiscal year 2013-2014.

In addition to the Teeter Program, CFD No. 90-2 has covenanted to commence foreclosure proceedings against (i) parcels with delinquent special taxes in excess of \$5,000 and (ii) all properties with delinquent special taxes if the delinquency rate exceeds five percent. Notwithstanding the foregoing, CFD No. 90-2 may elect to defer foreclosure proceedings on any parcel of Developed Property which is owned by a delinquent property owner whose property is not, in the aggregate, delinquent in the payment of special taxes for a period of five years or more in an amount in excess of \$10,000 and the amount in the Reserve Account is at least equal to the Reserve Requirement.

Based on the current level of delinquencies, no foreclosure action is required.

IV. Fiscal Year 2013-2014 Special Tax Requirement

For fiscal year 2013-2014, the special tax requirement is equal to \$3,951,684 and is calculated as follows:

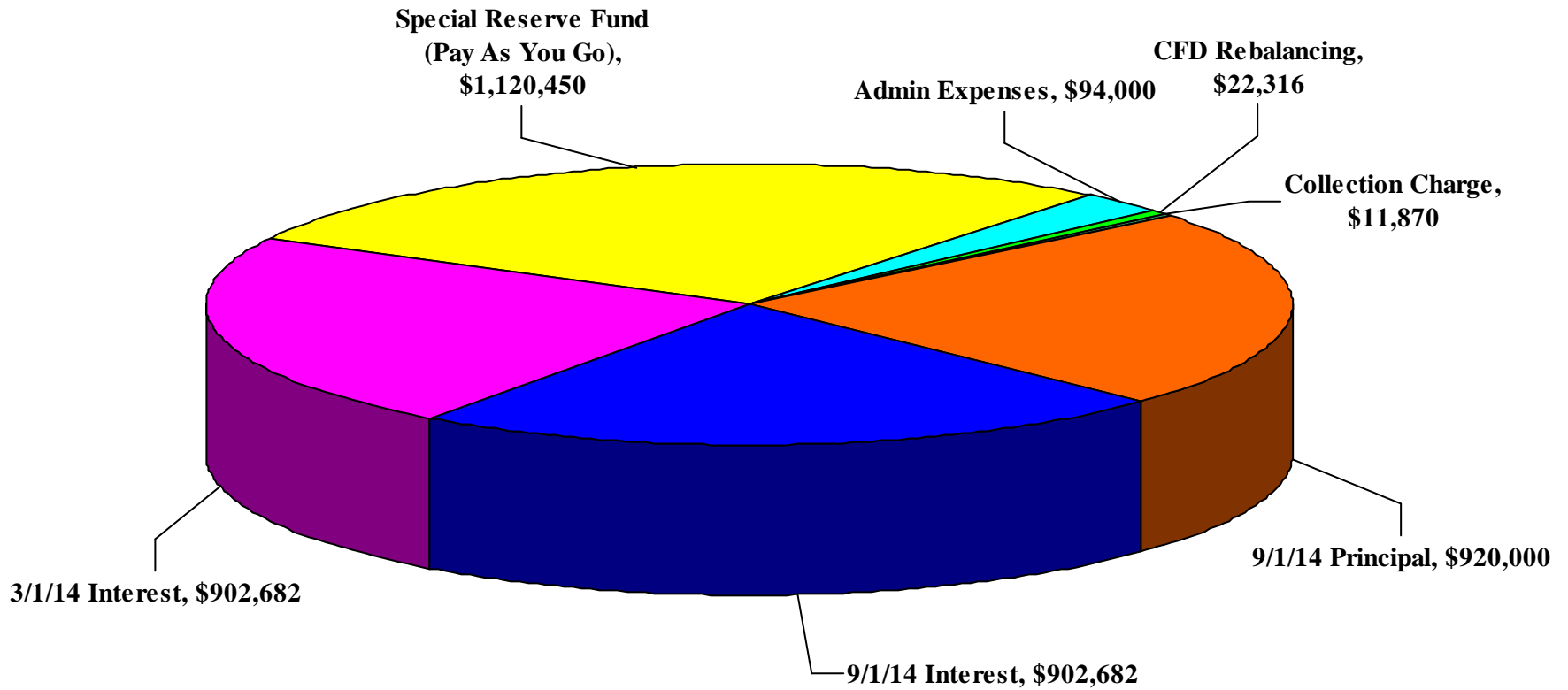
Community Facilities District No. 90-2 Fiscal Year 2013-2014 Special Tax Requirement

FUND BALANCES AS OF 6/30/2013	\$2,911,328
SPECIAL TAX FUND	\$2,889,005
INTEREST ACCOUNT	\$0
PRINCIPAL ACCOUNT	\$0
SPECIAL RESERVE FUNDS AVAILABLE FOR REBALANCING	\$22,316
RESERVE FUNDS IN EXCESS OF RESERVE REQUIREMENT (Series 2006)	\$7
REMAINING FISCAL YEAR 2012-2013 SOURCES OF FUNDS	\$120,351
TEETER AND FINAL APPORTIONMENT	\$120,351
REMAINING 2012-2013 OBLIGATIONS	(\$3,009,363)
SERIES 2006 BONDS	
INTEREST DUE SEPTEMBER 1, 2013	(\$919,382)
PRINCIPAL DUE SEPTEMBER 1, 2013	(\$835,000)
ADMINISTRATIVE EXPENSES	(\$94,000)
SPECIAL RESERVE FUND (PAY AS YOU GO)	(\$1,160,981)
PROJECTED SURPLUS / (DRAW ON RESERVE FUND)	\$22,316
FISCAL YEAR 2013-2014 OBLIGATIONS	(\$3,974,000)
CFD REBALANCING	(\$22,316)
SERIES 2006 BONDS	
INTEREST DUE MARCH 1, 2014	(\$902,682)
INTEREST DUE SEPTEMBER 1, 2014	(\$902,682)
PRINCIPAL DUE SEPTEMBER 1, 2014	(\$920,000)
ADMINISTRATIVE EXPENSES	(\$94,000)
COLLECTION CHARGE	(\$11,870)
SPECIAL RESERVE FUND (PAY AS YOU GO)	(\$1,120,450)
FISCAL YEAR 2013-2014 SPECIAL TAX REQUIREMENT	\$3,951,684

The components of the fiscal year 2013-2014 special tax requirement are shown graphically on the following page.

Community Facilities District No. 90-2 of the Capistrano Unified School District

Fiscal Year 2013-2014 Gross Special Tax Requirement



Total Gross Special Tax Requirement = \$3,974,000

V. Method of Apportionment

Maximum Special Taxes

The amount of special taxes that CFD No. 90-2 may levy is strictly limited by the maximum special taxes set forth in the Rate and Method of Apportionment. The initial assigned special taxes for each classification of Developed Property or Taxable Senior Housing Property are specified in Table 1 of Section C of the Rate and Method of Apportionment¹. These special taxes escalate by two percent each fiscal year.

Apportionment of Special Taxes

The special tax that is apportioned to each parcel is determined through the application of Section D of the Rate and Method of Apportionment. Section D apportions the special tax requirement in five steps which prioritize the order in which Developed Property, Taxable Golf Course Property, Taxable Property Owner Association Property, Taxable Public Property, Taxable Religious Property, Taxable Senior Housing Property, Undeveloped Non-Residential Property, and Undeveloped Property are taxed.

The first step states that the special tax shall be levied proportionately on each Assessor's Parcel of Developed Property and Taxable Senior Housing Property at up to 100% of the applicable Assigned Special Tax as needed to satisfy the special tax requirement. If the special taxes raised pursuant to the first step are less than the special tax requirement, then the second step is applied. The second step states that the special tax shall be levied Proportionately on each Assessor's Parcel of Undeveloped Property and Undeveloped Non-Residential Property at up to 100% of the Maximum Special Tax for Undeveloped Property and up to 100% of the Expected Tax for Undeveloped Non-Residential Property, respectively

The third, fourth and fifth steps are designed to accommodate changes in land use and are intended to be used only as a last resort. Since actual land uses have not substantially deviated from the original projections, these steps are not necessary.

Application of the maximum special taxes under the first step generates special tax revenues of \$3,880,035 from Residential Property and \$71,648 from Non-Residential Property which is equal to the fiscal year 2013-2014 special tax requirement as outlined in Section IV.

The fiscal year 2013-2014 special taxes are shown for each classification of Developed Property and Undeveloped Property in the table below and graphically on the following page. The Special Tax Roll which lists the total special tax levy for each parcel is shown in Exhibit C.

¹ Technically, Section C states that the maximum special tax for a parcel of Developed Property or Taxable Senior Housing Program is equal to the greater of (i) the "Backup Special Tax" or (ii) the Assigned Special Tax. In this report, all discussion of maximum tax rates for Developed Property and Senior Housing Property focuses on the Assigned Special Tax.

**Community Facilities District No. 90-2
Fiscal Year 2013-2014 Special Taxes**

Land Use Class	Description	FY 2013-2014 Maximum Special Tax	FY 2013-2014 Special Tax Levy
1	Residential Property (per s.f.)	\$0.4347	\$0.4347
2	Taxable Senior Housing Property (per s.f.)	\$0.4347	\$0.00
3	Non-Residential Property (per s.f.)	\$0.0789	\$0.0789
NA	Undeveloped Non-Residential Property (per acre)	\$1,481.77 [1]	\$0.00
NA	Undeveloped Property (per acre)	\$8,150.42	\$0.00

[1] Amount shown is the FY 2013-2014 Expected Special Tax for Undeveloped Non-Residential Property. The Maximum Special Tax is equal to \$8,150.42.

taussig-client/CAPO.USD/CFD90_2.adm/13-14/90_2ADM.doc

Community Facilities District No. 90-2 of the Capistrano Unified School District

Fiscal Year 2013-2014 Special Tax Levy Developed Property

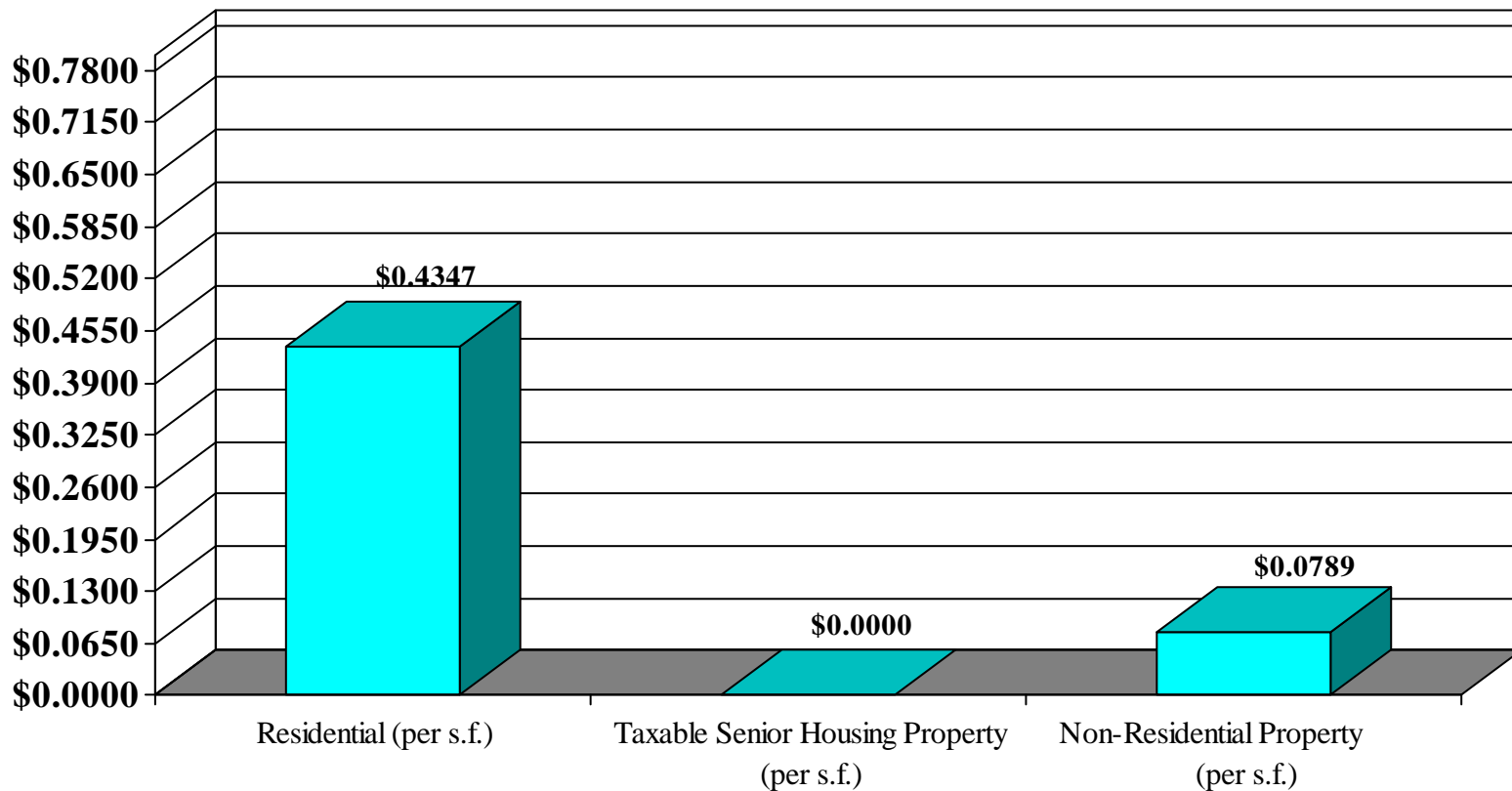
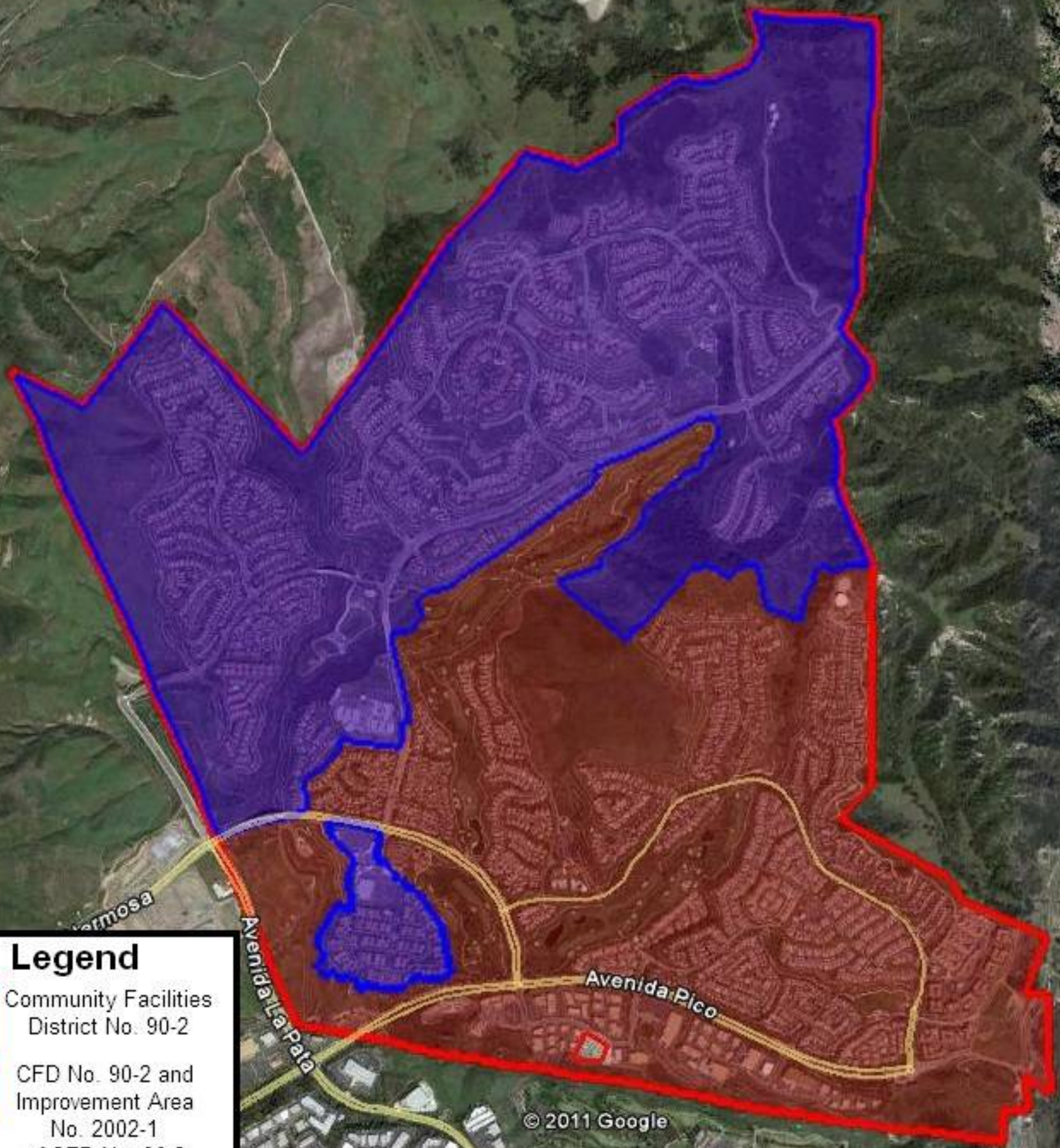


EXHIBIT A

*CFD No. 90-2 of the
Capistrano Unified School District*

Boundary Map

**Capistrano Unified School District
Community Facilities District No. 90-2
(Talega)**



Legend

-  Community Facilities District No. 90-2
-  CFD No. 90-2 and Improvement Area No. 2002-1 of CFD No. 90-2

© 2011 Google

Image © 2011 DigitalGlobe
Image U.S. Geological Survey

EXHIBIT B

*CFD No. 90-2 of the
Capistrano Unified School District*

*Summary of Transactions to Fund and Accounts
Series 2006
Fiscal Year 2012-2013*

**COMMUNITY FACILITIES DISTRICT NO. 90-2
OF THE CAPISTRANO UNIFIED SCHOOL DISTRICT
SERIES 2006 SPECIAL TAX BONDS
Fiscal Year 2012-2013**

	SPECIAL TAX FUND	INTEREST ACCOUNT	PRINCIPAL ACCOUNT	SPECIAL RESERVE FUND	RESERVE ACCOUNT	ADMIN EXPENSE ACCOUNT	REDEMPTION ACCOUNT	ACQUIS. & CONST. FUND	REBATE FUND	COST OF ISSUANCE ACCOUNT	TOTAL
BEGINNING BALANCE	\$2,661,036	\$0	\$0	\$4,154,312	\$1,970,249	\$615,726	\$0	\$0	\$0	\$0	\$9,401,324
SOURCES OF FUNDS											
SPECIAL TAX RECEIPTS	\$4,000,180	\$0	\$0	\$0	\$0	\$0	\$0	\$0	\$0	\$0	\$4,000,180
INVESTMENT AGRMNT. EARNINGS	\$0	\$0	\$0	\$0	\$105,112	\$0	\$0	\$0	\$0	\$0	\$105,112
OTHER INVESTMENT EARNINGS	\$229	\$0	\$0	\$766	\$6	\$117	\$0	\$0	\$0	\$0	\$1,118
MISCELLANEOUS	\$0	\$0	\$0	\$0	\$0	\$0	\$0	\$0	\$0	\$0	\$0
TOTAL SOURCES	\$4,000,408	\$0	\$0	\$766	\$105,118	\$117	\$0	\$0	\$0	\$0	\$4,106,410
USES OF FUNDS											
INTEREST PAYMENTS	\$0	(\$1,853,764)	\$0	\$0	\$0	\$0	\$0	\$0	\$0	\$0	(\$1,853,764)
PRINCIPAL PAYMENTS	\$0	\$0	(\$750,000)	\$0	\$0	\$0	\$0	\$0	\$0	\$0	(\$750,000)
PUBLIC FACILITIES	\$0	\$0	\$0	(\$87,780)	\$0	\$0	\$0	\$0	\$0	\$0	(\$87,780)
PROFESSIONAL SERVICES	\$0	\$0	\$0	(\$62,285)	\$0	(\$10,209)	\$0	\$0	\$0	\$0	(\$72,494)
MISCELLANEOUS	\$0	\$0	\$0	\$0	\$0	\$0	\$0	\$0	\$0	\$0	\$0
TOTAL USES	\$0	(\$1,853,764)	(\$750,000)	(\$150,065)	\$0	(\$10,209)	\$0	\$0	\$0	\$0	(\$2,764,037)
TRANSFERS	(\$3,772,440)	\$1,853,764	\$750,000	\$1,085,788	(\$105,112)	\$188,000	\$0	\$0	\$0	\$0	\$0
ENDING BALANCE	\$2,889,005	\$0	\$0	\$5,090,802	\$1,970,255	\$793,635	\$0	\$0	\$0	\$0	\$10,743,697

Per Trustee on 3/24/11: Reserve Requirement = \$3,902,513. \$1,932,264.45 in GIC, remaining \$1,970,248 in Reserve Account.

PRINTED: 07/18/13

11:31

**COMMUNITY FACILITIES DISTRICT NO. 90-2
OF THE CAPISTRANO UNIFIED SCHOOL DISTRICT
SERIES 2006 SPECIAL TAX BONDS
July 2012**

	SPECIAL TAX FUND	INTEREST ACCOUNT	PRINCIPAL ACCOUNT	SPECIAL RESERVE FUND	RESERVE ACCOUNT	ADMIN EXPENSE ACCOUNT	REDEMPTION ACCOUNT	ACQUIS. & CONST. FUND	REBATE FUND	COST OF ISSUANCE ACCOUNT	TOTAL
BEGINNING BALANCE	\$2,661,036	\$0	\$0	\$4,154,312	\$1,970,249	\$615,726	\$0	\$0	\$0	\$0	\$9,401,324
SOURCES OF FUNDS											
SPECIAL TAX RECEIPTS	\$243,149	\$0	\$0	\$0	\$0	\$0	\$0	\$0	\$0	\$0	\$243,149
INVESTMENT AGRMNT. EARNINGS	\$0	\$0	\$0	\$0	\$0	\$0	\$0	\$0	\$0	\$0	\$0
OTHER INVESTMENT EARNINGS	\$35	\$0	\$0	\$55	\$1	\$8	\$0	\$0	\$0	\$0	\$98
MISCELLANEOUS	\$0	\$0	\$0	\$0	\$0	\$0	\$0	\$0	\$0	\$0	\$0
TOTAL SOURCES	\$243,184	\$0	\$0	\$55	\$1	\$8	\$0	\$0	\$0	\$0	\$243,247
USES OF FUNDS											
INTEREST PAYMENTS	\$0	\$0	\$0	\$0	\$0	\$0	\$0	\$0	\$0	\$0	\$0
PRINCIPAL PAYMENTS	\$0	\$0	\$0	\$0	\$0	\$0	\$0	\$0	\$0	\$0	\$0
PUBLIC FACILITIES	\$0	\$0	\$0	\$0	\$0	\$0	\$0	\$0	\$0	\$0	\$0
PROFESSIONAL SERVICES	\$0	\$0	\$0	(\$62,285)	\$0	\$0	\$0	\$0	\$0	\$0	(\$62,285)
MISCELLANEOUS	\$0	\$0	\$0	\$0	\$0	\$0	\$0	\$0	\$0	\$0	\$0
TOTAL USES	\$0	\$0	\$0	(\$62,285)	\$0	\$0	\$0	\$0	\$0	\$0	(\$62,285)
TRANSFERS	\$0	\$0	\$0	\$0	\$0	\$0	\$0	\$0	\$0	\$0	\$0
ENDING BALANCE	\$2,904,220	\$0	\$0	\$4,092,082	\$1,970,250	\$615,735	\$0	\$0	\$0	\$0	\$9,582,286

Per Trustee on 3/24/11: Reserve Requirement = \$3,902,513. \$1,932,264.45 in GIC, remaining \$1,970,248 in Reserve Account.

PRINTED: 07/18/13
11:31

PAGE:1

**COMMUNITY FACILITIES DISTRICT NO. 90-2
OF THE CAPISTRANO UNIFIED SCHOOL DISTRICT
SERIES 2006 SPECIAL TAX BONDS
August 2012**

	SPECIAL TAX FUND	INTEREST ACCOUNT	PRINCIPAL ACCOUNT	SPECIAL RESERVE FUND	RESERVE ACCOUNT	ADMIN EXPENSE ACCOUNT	REDEMPTION ACCOUNT	ACQUIS. & CONST. FUND	REBATE FUND	COST OF ISSUANCE ACCOUNT	TOTAL
BEGINNING BALANCE	\$2,904,220	\$0	\$0	\$4,092,082	\$1,970,250	\$615,735	\$0	\$0	\$0	\$0	\$9,582,286
SOURCES OF FUNDS											
SPECIAL TAX RECEIPTS	\$0	\$0	\$0	\$0	\$0	\$0	\$0	\$0	\$0	\$0	\$0
INVESTMENT AGRMNT. EARNINGS	\$0	\$0	\$0	\$0	\$53,874	\$0	\$0	\$0	\$0	\$0	\$53,874
OTHER INVESTMENT EARNINGS	\$37	\$0	\$0	\$56	\$1	\$8	\$0	\$0	\$0	\$0	\$102
MISCELLANEOUS	\$0	\$0	\$0	\$0	\$0	\$0	\$0	\$0	\$0	\$0	\$0
TOTAL SOURCES	\$37	\$0	\$0	\$56	\$53,874	\$8	\$0	\$0	\$0	\$0	\$53,976
USES OF FUNDS											
INTEREST PAYMENTS	\$0	\$0	\$0	\$0	\$0	\$0	\$0	\$0	\$0	\$0	\$0
PRINCIPAL PAYMENTS	\$0	\$0	\$0	\$0	\$0	\$0	\$0	\$0	\$0	\$0	\$0
PUBLIC FACILITIES	\$0	\$0	\$0	\$0	\$0	\$0	\$0	\$0	\$0	\$0	\$0
PROFESSIONAL SERVICES	\$0	\$0	\$0	\$0	\$0	(\$4,500)	\$0	\$0	\$0	\$0	(\$4,500)
MISCELLANEOUS	\$0	\$0	\$0	\$0	\$0	\$0	\$0	\$0	\$0	\$0	\$0
TOTAL USES	\$0	\$0	\$0	\$0	\$0	(\$4,500)	\$0	\$0	\$0	\$0	(\$4,500)
TRANSFERS	\$0	\$0	\$0	\$0	\$0	\$0	\$0	\$0	\$0	\$0	\$0
ENDING BALANCE	\$2,904,257	\$0	\$0	\$4,092,138	\$2,024,124	\$611,243	\$0	\$0	\$0	\$0	\$9,631,762

Per Trustee on 3/24/11: Reserve Requirement = \$3,902,513. \$1,932,264.45 in GIC, remaining \$1,970,248 in Reserve Account.

PRINTED: 07/18/13
11:31

**COMMUNITY FACILITIES DISTRICT NO. 90-2
OF THE CAPISTRANO UNIFIED SCHOOL DISTRICT
SERIES 2006 SPECIAL TAX BONDS
September 2012**

	SPECIAL TAX FUND	INTEREST ACCOUNT	PRINCIPAL ACCOUNT	SPECIAL RESERVE FUND	RESERVE ACCOUNT	ADMIN EXPENSE ACCOUNT	REDEMPTION ACCOUNT	ACQUIS. & CONST. FUND	REBATE FUND	COST OF ISSUANCE ACCOUNT	TOTAL
BEGINNING BALANCE	\$2,904,257	\$0	\$0	\$4,092,138	\$2,024,124	\$611,243	\$0	\$0	\$0	\$0	\$9,631,762
SOURCES OF FUNDS											
SPECIAL TAX RECEIPTS	\$0	\$0	\$0	\$0	\$0	\$0	\$0	\$0	\$0	\$0	\$0
INVESTMENT AGRMNT. EARNINGS	\$0	\$0	\$0	\$0	\$0	\$0	\$0	\$0	\$0	\$0	\$0
OTHER INVESTMENT EARNINGS	\$40	\$0	\$0	\$56	\$1	\$8	\$0	\$0	\$0	\$0	\$104
MISCELLANEOUS	\$0	\$0	\$0	\$0	\$0	\$0	\$0	\$0	\$0	\$0	\$0
TOTAL SOURCES	\$40	\$0	\$0	\$56	\$1	\$8	\$0	\$0	\$0	\$0	\$104
USES OF FUNDS											
INTEREST PAYMENTS	\$0	(\$934,382)	\$0	\$0	\$0	\$0	\$0	\$0	\$0	\$0	(\$934,382)
PRINCIPAL PAYMENTS	\$0	\$0	(\$750,000)	\$0	\$0	\$0	\$0	\$0	\$0	\$0	(\$750,000)
PUBLIC FACILITIES	\$0	\$0	\$0	\$0	\$0	\$0	\$0	\$0	\$0	\$0	\$0
PROFESSIONAL SERVICES	\$0	\$0	\$0	\$0	\$0	\$0	\$0	\$0	\$0	\$0	\$0
MISCELLANEOUS	\$0	\$0	\$0	\$0	\$0	\$0	\$0	\$0	\$0	\$0	\$0
TOTAL USES	\$0	(\$934,382)	(\$750,000)	\$0	\$0	\$0	\$0	\$0	\$0	\$0	(\$1,684,382)
TRANSFERS	(\$1,630,508)	\$934,382	\$750,000	\$0	(\$53,874)	\$0	\$0	\$0	\$0	\$0	\$0
ENDING BALANCE	\$1,273,788	\$0	\$0	\$4,092,194	\$1,970,251	\$611,251	\$0	\$0	\$0	\$0	\$7,947,484

Per Trustee on 3/24/11: Reserve Requirement = \$3,902,513. \$1,932,264.45 in GIC, remaining \$1,970,248 in Reserve Account.

PRINTED: 07/18/13
11:31

**COMMUNITY FACILITIES DISTRICT NO. 90-2
OF THE CAPISTRANO UNIFIED SCHOOL DISTRICT
SERIES 2006 SPECIAL TAX BONDS
October 2012**

	SPECIAL TAX FUND	INTEREST ACCOUNT	PRINCIPAL ACCOUNT	SPECIAL RESERVE FUND	RESERVE ACCOUNT	ADMIN EXPENSE ACCOUNT	REDEMPTION ACCOUNT	ACQUIS. & CONST. FUND	REBATE FUND	COST OF ISSUANCE ACCOUNT	TOTAL
BEGINNING BALANCE	\$1,273,788	\$0	\$0	\$4,092,194	\$1,970,251	\$611,251	\$0	\$0	\$0	\$0	\$7,947,484
SOURCES OF FUNDS											
SPECIAL TAX RECEIPTS	\$0	\$0	\$0	\$0	\$0	\$0	\$0	\$0	\$0	\$0	\$0
INVESTMENT AGRMNT. EARNINGS	\$0	\$0	\$0	\$0	\$0	\$0	\$0	\$0	\$0	\$0	\$0
OTHER INVESTMENT EARNINGS	\$19	\$0	\$0	\$54	\$1	\$8	\$0	\$0	\$0	\$0	\$81
MISCELLANEOUS	\$0	\$0	\$0	\$0	\$0	\$0	\$0	\$0	\$0	\$0	\$0
TOTAL SOURCES	\$19	\$0	\$0	\$54	\$1	\$8	\$0	\$0	\$0	\$0	\$81
USES OF FUNDS											
INTEREST PAYMENTS	\$0	\$0	\$0	\$0	\$0	\$0	\$0	\$0	\$0	\$0	\$0
PRINCIPAL PAYMENTS	\$0	\$0	\$0	\$0	\$0	\$0	\$0	\$0	\$0	\$0	\$0
PUBLIC FACILITIES	\$0	\$0	\$0	\$0	\$0	\$0	\$0	\$0	\$0	\$0	\$0
PROFESSIONAL SERVICES	\$0	\$0	\$0	\$0	\$0	\$0	\$0	\$0	\$0	\$0	\$0
MISCELLANEOUS	\$0	\$0	\$0	\$0	\$0	\$0	\$0	\$0	\$0	\$0	\$0
TOTAL USES	\$0	\$0	\$0	\$0	\$0	\$0	\$0	\$0	\$0	\$0	\$0
TRANSFERS	(\$1,273,788)	\$0	\$0	\$1,085,788	\$0	\$188,000	\$0	\$0	\$0	\$0	\$0
ENDING BALANCE	\$19	\$0	\$0	\$5,178,036	\$1,970,251	\$799,259	\$0	\$0	\$0	\$0	\$7,947,566

Per Trustee on 3/24/11: Reserve Requirement = \$3,902,513. \$1,932,264.45 in GIC, remaining \$1,970,248 in Reserve Account.

PRINTED: 07/18/13
11:31

**COMMUNITY FACILITIES DISTRICT NO. 90-2
OF THE CAPISTRANO UNIFIED SCHOOL DISTRICT
SERIES 2006 SPECIAL TAX BONDS
November 2012**

	SPECIAL TAX FUND	INTEREST ACCOUNT	PRINCIPAL ACCOUNT	SPECIAL RESERVE FUND	RESERVE ACCOUNT	ADMIN EXPENSE ACCOUNT	REDEMPTION ACCOUNT	ACQUIS. & CONST. FUND	REBATE FUND	COST OF ISSUANCE ACCOUNT	TOTAL
BEGINNING BALANCE	\$19	\$0	\$0	\$5,178,036	\$1,970,251	\$799,259	\$0	\$0	\$0	\$0	\$7,947,566
SOURCES OF FUNDS											
SPECIAL TAX RECEIPTS	\$0	\$0	\$0	\$0	\$0	\$0	\$0	\$0	\$0	\$0	\$0
INVESTMENT AGRMNT. EARNINGS	\$0	\$0	\$0	\$0	\$0	\$0	\$0	\$0	\$0	\$0	\$0
OTHER INVESTMENT EARNINGS	\$8	\$0	\$0	\$64	\$1	\$10	\$0	\$0	\$0	\$0	\$82
MISCELLANEOUS	\$0	\$0	\$0	\$0	\$0	\$0	\$0	\$0	\$0	\$0	\$0
TOTAL SOURCES	\$8	\$0	\$0	\$64	\$1	\$10	\$0	\$0	\$0	\$0	\$82
USES OF FUNDS											
INTEREST PAYMENTS	\$0	\$0	\$0	\$0	\$0	\$0	\$0	\$0	\$0	\$0	\$0
PRINCIPAL PAYMENTS	\$0	\$0	\$0	\$0	\$0	\$0	\$0	\$0	\$0	\$0	\$0
PUBLIC FACILITIES	\$0	\$0	\$0	\$0	\$0	\$0	\$0	\$0	\$0	\$0	\$0
PROFESSIONAL SERVICES	\$0	\$0	\$0	\$0	\$0	\$0	\$0	\$0	\$0	\$0	\$0
MISCELLANEOUS	\$0	\$0	\$0	\$0	\$0	\$0	\$0	\$0	\$0	\$0	\$0
TOTAL USES	\$0	\$0	\$0	\$0	\$0	\$0	\$0	\$0	\$0	\$0	\$0
TRANSFERS	\$0	\$0	\$0	\$0	\$0	\$0	\$0	\$0	\$0	\$0	\$0
ENDING BALANCE	\$27	\$0	\$0	\$5,178,100	\$1,970,252	\$799,269	\$0	\$0	\$0	\$0	\$7,947,647

Per Trustee on 3/24/11: Reserve Requirement = \$3,902,513. \$1,932,264.45 in GIC, remaining \$1,970,248 in Reserve Account.

PRINTED: 07/18/13
11:31

**COMMUNITY FACILITIES DISTRICT NO. 90-2
OF THE CAPISTRANO UNIFIED SCHOOL DISTRICT
SERIES 2006 SPECIAL TAX BONDS
December 2012**

	SPECIAL TAX FUND	INTEREST ACCOUNT	PRINCIPAL ACCOUNT	SPECIAL RESERVE FUND	RESERVE ACCOUNT	ADMIN EXPENSE ACCOUNT	REDEMPTION ACCOUNT	ACQUIS. & CONST. FUND	REBATE FUND	COST OF ISSUANCE ACCOUNT	TOTAL
BEGINNING BALANCE	\$27	\$0	\$0	\$5,178,100	\$1,970,252	\$799,269	\$0	\$0	\$0	\$0	\$7,947,647
SOURCES OF FUNDS											
SPECIAL TAX RECEIPTS	\$0	\$0	\$0	\$0	\$0	\$0	\$0	\$0	\$0	\$0	\$0
INVESTMENT AGRMNT. EARNINGS	\$0	\$0	\$0	\$0	\$0	\$0	\$0	\$0	\$0	\$0	\$0
OTHER INVESTMENT EARNINGS	\$0	\$0	\$0	\$68	\$1	\$11	\$0	\$0	\$0	\$0	\$79
MISCELLANEOUS	\$0	\$0	\$0	\$0	\$0	\$0	\$0	\$0	\$0	\$0	\$0
TOTAL SOURCES	\$0	\$0	\$0	\$68	\$1	\$11	\$0	\$0	\$0	\$0	\$79
USES OF FUNDS											
INTEREST PAYMENTS	\$0	\$0	\$0	\$0	\$0	\$0	\$0	\$0	\$0	\$0	\$0
PRINCIPAL PAYMENTS	\$0	\$0	\$0	\$0	\$0	\$0	\$0	\$0	\$0	\$0	\$0
PUBLIC FACILITIES	\$0	\$0	\$0	\$0	\$0	\$0	\$0	\$0	\$0	\$0	\$0
PROFESSIONAL SERVICES	\$0	\$0	\$0	\$0	\$0	(\$773)	\$0	\$0	\$0	\$0	(\$773)
MISCELLANEOUS	\$0	\$0	\$0	\$0	\$0	\$0	\$0	\$0	\$0	\$0	\$0
TOTAL USES	\$0	\$0	\$0	\$0	\$0	(\$773)	\$0	\$0	\$0	\$0	(\$773)
TRANSFERS	\$0	\$0	\$0	\$0	\$0	\$0	\$0	\$0	\$0	\$0	\$0
ENDING BALANCE	\$27	\$0	\$0	\$5,178,168	\$1,970,252	\$798,507	\$0	\$0	\$0	\$0	\$7,946,954

Per Trustee on 3/24/11: Reserve Requirement = \$3,902,513. \$1,932,264.45 in GIC, remaining \$1,970,248 in Reserve Account.

PRINTED: 07/18/13
11:31

**COMMUNITY FACILITIES DISTRICT NO. 90-2
OF THE CAPISTRANO UNIFIED SCHOOL DISTRICT
SERIES 2006 SPECIAL TAX BONDS
January 2013**

	SPECIAL TAX FUND	INTEREST ACCOUNT	PRINCIPAL ACCOUNT	SPECIAL RESERVE FUND	RESERVE ACCOUNT	ADMIN EXPENSE ACCOUNT	REDEMPTION ACCOUNT	ACQUIS. & CONST. FUND	REBATE FUND	COST OF ISSUANCE ACCOUNT	TOTAL
BEGINNING BALANCE	\$27	\$0	\$0	\$5,178,168	\$1,970,252	\$798,507	\$0	\$0	\$0	\$0	\$7,946,954
SOURCES OF FUNDS											
SPECIAL TAX RECEIPTS	\$1,897,947	\$0	\$0	\$0	\$0	\$0	\$0	\$0	\$0	\$0	\$1,897,947
INVESTMENT AGRMNT. EARNINGS	\$0	\$0	\$0	\$0	\$0	\$0	\$0	\$0	\$0	\$0	\$0
OTHER INVESTMENT EARNINGS	\$0	\$0	\$0	\$70	\$1	\$11	\$0	\$0	\$0	\$0	\$82
MISCELLANEOUS	\$0	\$0	\$0	\$0	\$0	\$0	\$0	\$0	\$0	\$0	\$0
TOTAL SOURCES	\$1,897,947	\$0	\$0	\$70	\$1	\$11	\$0	\$0	\$0	\$0	\$1,898,028
USES OF FUNDS											
INTEREST PAYMENTS	\$0	\$0	\$0	\$0	\$0	\$0	\$0	\$0	\$0	\$0	\$0
PRINCIPAL PAYMENTS	\$0	\$0	\$0	\$0	\$0	\$0	\$0	\$0	\$0	\$0	\$0
PUBLIC FACILITIES	\$0	\$0	\$0	\$0	\$0	\$0	\$0	\$0	\$0	\$0	\$0
PROFESSIONAL SERVICES	\$0	\$0	\$0	\$0	\$0	(\$4,936)	\$0	\$0	\$0	\$0	(\$4,936)
MISCELLANEOUS	\$0	\$0	\$0	\$0	\$0	\$0	\$0	\$0	\$0	\$0	\$0
TOTAL USES	\$0	\$0	\$0	\$0	\$0	(\$4,936)	\$0	\$0	\$0	\$0	(\$4,936)
TRANSFERS	\$0	\$0	\$0	\$0	\$0	\$0	\$0	\$0	\$0	\$0	\$0
ENDING BALANCE	\$1,897,973	\$0	\$0	\$5,178,239	\$1,970,253	\$793,582	\$0	\$0	\$0	\$0	\$9,840,047

Per Trustee on 3/24/11: Reserve Requirement = \$3,902,513. \$1,932,264.45 in GIC, remaining \$1,970,248 in Reserve Account.

PRINTED: 07/18/13
11:31

PAGE:7

**COMMUNITY FACILITIES DISTRICT NO. 90-2
OF THE CAPISTRANO UNIFIED SCHOOL DISTRICT
SERIES 2006 SPECIAL TAX BONDS
February 2013**

	SPECIAL TAX FUND	INTEREST ACCOUNT	PRINCIPAL ACCOUNT	SPECIAL RESERVE FUND	RESERVE ACCOUNT	ADMIN EXPENSE ACCOUNT	REDEMPTION ACCOUNT	ACQUIS. & CONST. FUND	REBATE FUND	COST OF ISSUANCE ACCOUNT	TOTAL
BEGINNING BALANCE	\$1,897,973	\$0	\$0	\$5,178,239	\$1,970,253	\$793,582	\$0	\$0	\$0	\$0	\$9,840,047
SOURCES OF FUNDS											
SPECIAL TAX RECEIPTS	\$90,562	\$0	\$0	\$0	\$0	\$0	\$0	\$0	\$0	\$0	\$90,562
INVESTMENT AGRMNT. EARNINGS	\$0	\$0	\$0	\$0	\$51,239	\$0	\$0	\$0	\$0	\$0	\$51,239
OTHER INVESTMENT EARNINGS	\$16	\$0	\$0	\$70	\$1	\$11	\$0	\$0	\$0	\$0	\$98
MISCELLANEOUS	\$0	\$0	\$0	\$0	\$0	\$0	\$0	\$0	\$0	\$0	\$0
TOTAL SOURCES	\$90,578	\$0	\$0	\$70	\$51,239	\$11	\$0	\$0	\$0	\$0	\$141,899
USES OF FUNDS											
INTEREST PAYMENTS	\$0	\$0	\$0	\$0	\$0	\$0	\$0	\$0	\$0	\$0	\$0
PRINCIPAL PAYMENTS	\$0	\$0	\$0	\$0	\$0	\$0	\$0	\$0	\$0	\$0	\$0
PUBLIC FACILITIES	\$0	\$0	\$0	\$0	\$0	\$0	\$0	\$0	\$0	\$0	\$0
PROFESSIONAL SERVICES	\$0	\$0	\$0	\$0	\$0	\$0	\$0	\$0	\$0	\$0	\$0
MISCELLANEOUS	\$0	\$0	\$0	\$0	\$0	\$0	\$0	\$0	\$0	\$0	\$0
TOTAL USES	\$0	\$0	\$0	\$0	\$0	\$0	\$0	\$0	\$0	\$0	\$0
TRANSFERS	(\$868,143)	\$919,382	\$0	\$0	(\$51,239)	\$0	\$0	\$0	\$0	\$0	\$0
ENDING BALANCE	\$1,120,408	\$919,382	\$0	\$5,178,309	\$1,970,253	\$793,593	\$0	\$0	\$0	\$0	\$9,981,945

Per Trustee on 3/24/11: Reserve Requirement = \$3,902,513. \$1,932,264.45 in GIC, remaining \$1,970,248 in Reserve Account.

PRINTED: 07/18/13
11:31

**COMMUNITY FACILITIES DISTRICT NO. 90-2
OF THE CAPISTRANO UNIFIED SCHOOL DISTRICT
SERIES 2006 SPECIAL TAX BONDS
March 2013**

	SPECIAL TAX FUND	INTEREST ACCOUNT	PRINCIPAL ACCOUNT	SPECIAL RESERVE FUND	RESERVE ACCOUNT	ADMIN EXPENSE ACCOUNT	REDEMPTION ACCOUNT	ACQUIS. & CONST. FUND	REBATE FUND	COST OF ISSUANCE ACCOUNT	TOTAL
BEGINNING BALANCE	\$1,120,408	\$919,382	\$0	\$5,178,309	\$1,970,253	\$793,593	\$0	\$0	\$0	\$0	\$9,981,945
SOURCES OF FUNDS											
SPECIAL TAX RECEIPTS	\$0	\$0	\$0	\$0	\$0	\$0	\$0	\$0	\$0	\$0	\$0
INVESTMENT AGRMNT. EARNINGS	\$0	\$0	\$0	\$0	\$0	\$0	\$0	\$0	\$0	\$0	\$0
OTHER INVESTMENT EARNINGS	\$24	\$0	\$0	\$64	\$0	\$10	\$0	\$0	\$0	\$0	\$98
MISCELLANEOUS	\$0	\$0	\$0	\$0	\$0	\$0	\$0	\$0	\$0	\$0	\$0
TOTAL SOURCES	\$24	\$0	\$0	\$64	\$0	\$10	\$0	\$0	\$0	\$0	\$98
USES OF FUNDS											
INTEREST PAYMENTS	\$0	(\$919,382)	\$0	\$0	\$0	\$0	\$0	\$0	\$0	\$0	(\$919,382)
PRINCIPAL PAYMENTS	\$0	\$0	\$0	\$0	\$0	\$0	\$0	\$0	\$0	\$0	\$0
PUBLIC FACILITIES	\$0	\$0	\$0	\$0	\$0	\$0	\$0	\$0	\$0	\$0	\$0
PROFESSIONAL SERVICES	\$0	\$0	\$0	\$0	\$0	\$0	\$0	\$0	\$0	\$0	\$0
MISCELLANEOUS	\$0	\$0	\$0	\$0	\$0	\$0	\$0	\$0	\$0	\$0	\$0
TOTAL USES	\$0	(\$919,382)	\$0	\$0	\$0	\$0	\$0	\$0	\$0	\$0	(\$919,382)
TRANSFERS	\$0	\$0	\$0	\$0	\$0	\$0	\$0	\$0	\$0	\$0	\$0
ENDING BALANCE	\$1,120,432	\$0	\$0	\$5,178,373	\$1,970,254	\$793,603	\$0	\$0	\$0	\$0	\$9,062,662

Per Trustee on 3/24/11: Reserve Requirement = \$3,902,513. \$1,932,264.45 in GIC, remaining \$1,970,248 in Reserve Account.

PRINTED: 07/18/13
11:31

PAGE:9

**COMMUNITY FACILITIES DISTRICT NO. 90-2
OF THE CAPISTRANO UNIFIED SCHOOL DISTRICT
SERIES 2006 SPECIAL TAX BONDS
April 2013**

	SPECIAL TAX FUND	INTEREST ACCOUNT	PRINCIPAL ACCOUNT	SPECIAL RESERVE FUND	RESERVE ACCOUNT	ADMIN EXPENSE ACCOUNT	REDEMPTION ACCOUNT	ACQUIS. & CONST. FUND	REBATE FUND	COST OF ISSUANCE ACCOUNT	TOTAL
BEGINNING BALANCE	\$1,120,432	\$0	\$0	\$5,178,373	\$1,970,254	\$793,603	\$0	\$0	\$0	\$0	\$9,062,662
SOURCES OF FUNDS											
SPECIAL TAX RECEIPTS	\$215,898	\$0	\$0	\$0	\$0	\$0	\$0	\$0	\$0	\$0	\$215,898
INVESTMENT AGRMNT. EARNINGS	\$0	\$0	\$0	\$0	\$0	\$0	\$0	\$0	\$0	\$0	\$0
OTHER INVESTMENT EARNINGS	\$15	\$0	\$0	\$70	\$1	\$11	\$0	\$0	\$0	\$0	\$97
MISCELLANEOUS	\$0	\$0	\$0	\$0	\$0	\$0	\$0	\$0	\$0	\$0	\$0
TOTAL SOURCES	\$215,913	\$0	\$0	\$70	\$1	\$11	\$0	\$0	\$0	\$0	\$215,995
USES OF FUNDS											
INTEREST PAYMENTS	\$0	\$0	\$0	\$0	\$0	\$0	\$0	\$0	\$0	\$0	\$0
PRINCIPAL PAYMENTS	\$0	\$0	\$0	\$0	\$0	\$0	\$0	\$0	\$0	\$0	\$0
PUBLIC FACILITIES	\$0	\$0	\$0	\$0	\$0	\$0	\$0	\$0	\$0	\$0	\$0
PROFESSIONAL SERVICES	\$0	\$0	\$0	\$0	\$0	\$0	\$0	\$0	\$0	\$0	\$0
MISCELLANEOUS	\$0	\$0	\$0	\$0	\$0	\$0	\$0	\$0	\$0	\$0	\$0
TOTAL USES	\$0	\$0	\$0	\$0	\$0	\$0	\$0	\$0	\$0	\$0	\$0
TRANSFERS	\$0	\$0	\$0	\$0	\$0	\$0	\$0	\$0	\$0	\$0	\$0
ENDING BALANCE	\$1,336,346	\$0	\$0	\$5,178,443	\$1,970,254	\$793,613	\$0	\$0	\$0	\$0	\$9,278,657

Per Trustee on 3/24/11: Reserve Requirement = \$3,902,513. \$1,932,264.45 in GIC, remaining \$1,970,248 in Reserve Account.

PRINTED: 07/18/13
11:31

PAGE:10

**COMMUNITY FACILITIES DISTRICT NO. 90-2
OF THE CAPISTRANO UNIFIED SCHOOL DISTRICT
SERIES 2006 SPECIAL TAX BONDS
May 2013**

	SPECIAL TAX FUND	INTEREST ACCOUNT	PRINCIPAL ACCOUNT	SPECIAL RESERVE FUND	RESERVE ACCOUNT	ADMIN EXPENSE ACCOUNT	REDEMPTION ACCOUNT	ACQUIS. & CONST. FUND	REBATE FUND	COST OF ISSUANCE ACCOUNT	TOTAL
BEGINNING BALANCE	\$1,336,346	\$0	\$0	\$5,178,443	\$1,970,254	\$793,613	\$0	\$0	\$0	\$0	\$9,278,657
SOURCES OF FUNDS											
SPECIAL TAX RECEIPTS	\$0	\$0	\$0	\$0	\$0	\$0	\$0	\$0	\$0	\$0	\$0
INVESTMENT AGRMNT. EARNINGS	\$0	\$0	\$0	\$0	\$0	\$0	\$0	\$0	\$0	\$0	\$0
OTHER INVESTMENT EARNINGS	\$17	\$0	\$0	\$68	\$1	\$10	\$0	\$0	\$0	\$0	\$96
MISCELLANEOUS	\$0	\$0	\$0	\$0	\$0	\$0	\$0	\$0	\$0	\$0	\$0
TOTAL SOURCES	\$17	\$0	\$0	\$68	\$1	\$10	\$0	\$0	\$0	\$0	\$96
USES OF FUNDS											
INTEREST PAYMENTS	\$0	\$0	\$0	\$0	\$0	\$0	\$0	\$0	\$0	\$0	\$0
PRINCIPAL PAYMENTS	\$0	\$0	\$0	\$0	\$0	\$0	\$0	\$0	\$0	\$0	\$0
PUBLIC FACILITIES	\$0	\$0	\$0	(\$15,431)	\$0	\$0	\$0	\$0	\$0	\$0	(\$15,431)
PROFESSIONAL SERVICES	\$0	\$0	\$0	\$0	\$0	\$0	\$0	\$0	\$0	\$0	\$0
MISCELLANEOUS	\$0	\$0	\$0	\$0	\$0	\$0	\$0	\$0	\$0	\$0	\$0
TOTAL USES	\$0	\$0	\$0	(\$15,431)	\$0	\$0	\$0	\$0	\$0	\$0	(\$15,431)
TRANSFERS	\$0	\$0	\$0	\$0	\$0	\$0	\$0	\$0	\$0	\$0	\$0
ENDING BALANCE	\$1,336,362	\$0	\$0	\$5,163,080	\$1,970,255	\$793,624	\$0	\$0	\$0	\$0	\$9,263,322

Per Trustee on 3/24/11: Reserve Requirement = \$3,902,513. \$1,932,264.45 in GIC, remaining \$1,970,248 in Reserve Account.

PRINTED: 07/18/13
11:31

PAGE:11

**COMMUNITY FACILITIES DISTRICT NO. 90-2
OF THE CAPISTRANO UNIFIED SCHOOL DISTRICT
SERIES 2006 SPECIAL TAX BONDS
June 2013**

	SPECIAL TAX FUND	INTEREST ACCOUNT	PRINCIPAL ACCOUNT	SPECIAL RESERVE FUND	RESERVE ACCOUNT	ADMIN EXPENSE ACCOUNT	REDEMPTION ACCOUNT	ACQUIS. & CONST. FUND	REBATE FUND	COST OF ISSUANCE ACCOUNT	TOTAL
BEGINNING BALANCE	\$1,336,362	\$0	\$0	\$5,163,080	\$1,970,255	\$793,624	\$0	\$0	\$0	\$0	\$9,263,322
SOURCES OF FUNDS											
SPECIAL TAX RECEIPTS	\$1,552,624	\$0	\$0	\$0	\$0	\$0	\$0	\$0	\$0	\$0	\$1,552,624
INVESTMENT AGRMNT. EARNINGS	\$0	\$0	\$0	\$0	\$0	\$0	\$0	\$0	\$0	\$0	\$0
OTHER INVESTMENT EARNINGS	\$18	\$0	\$0	\$70	\$1	\$11	\$0	\$0	\$0	\$0	\$100
MISCELLANEOUS	\$0	\$0	\$0	\$0	\$0	\$0	\$0	\$0	\$0	\$0	\$0
TOTAL SOURCES	\$1,552,642	\$0	\$0	\$70	\$1	\$11	\$0	\$0	\$0	\$0	\$1,552,724
USES OF FUNDS											
INTEREST PAYMENTS	\$0	\$0	\$0	\$0	\$0	\$0	\$0	\$0	\$0	\$0	\$0
PRINCIPAL PAYMENTS	\$0	\$0	\$0	\$0	\$0	\$0	\$0	\$0	\$0	\$0	\$0
PUBLIC FACILITIES	\$0	\$0	\$0	(\$72,349)	\$0	\$0	\$0	\$0	\$0	\$0	(\$72,349)
PROFESSIONAL SERVICES	\$0	\$0	\$0	\$0	\$0	\$0	\$0	\$0	\$0	\$0	\$0
MISCELLANEOUS	\$0	\$0	\$0	\$0	\$0	\$0	\$0	\$0	\$0	\$0	\$0
TOTAL USES	\$0	\$0	\$0	(\$72,349)	\$0	\$0	\$0	\$0	\$0	\$0	(\$72,349)
TRANSFERS	\$0	\$0	\$0	\$0	\$0	\$0	\$0	\$0	\$0	\$0	\$0
ENDING BALANCE	\$2,889,005	\$0	\$0	\$5,090,802	\$1,970,255	\$793,635	\$0	\$0	\$0	\$0	\$10,743,697

Per Trustee on 3/24/11: Reserve Requirement = \$3,902,513. \$1,932,264.45 in GIC, remaining \$1,970,248 in Reserve Account.

PRINTED: 07/18/13
11:31

PAGE:12

EXHIBIT C

*CFD No. 90-2 of the
Capistrano Unified School District*

*Special Tax Roll
Fiscal Year 2013-2014*

Exhibit C

CFD No. 90-2 of the Capistrano Unified School District

<u>Assessor's Parcel Number</u>	<u>FY 2013-2014 Special Tax</u>
688-291-11	\$828.45
688-291-12	\$2,284.71
688-291-15	\$2,129.67
688-291-17	\$786.32
688-292-06	\$333.75
688-292-07	\$418.33
688-292-08	\$652.11
688-292-11	\$557.03
688-311-01	\$833.26
688-311-02	\$3,593.11
688-311-04	\$1,022.54
688-311-05	\$1,022.54
688-311-06	\$541.57
688-311-07	\$800.36
688-311-08	\$1,054.97
688-311-09	\$638.14
688-311-10	\$918.95
688-311-11	\$971.89
688-311-12	\$1,185.47
688-321-01	\$518.77
688-321-02	\$463.77
688-321-03	\$507.01
688-321-04	\$431.98
688-321-05	\$316.86
688-321-06	\$444.92
688-321-07	\$429.29
688-321-08	\$504.96
688-321-09	\$537.23
688-321-10	\$421.33
688-321-11	\$392.53
701-033-11	\$2,737.83
701-033-12	\$1,791.66
701-033-13	\$3,607.39
701-033-18	\$2,591.87
701-033-19	\$2,065.29
701-033-24	\$7,142.19
701-033-25	\$779.93
701-033-26	\$877.60
701-033-27	\$531.47
701-034-01	\$338.40
701-034-02	\$397.81
701-034-03	\$400.50
701-034-04	\$420.77
701-034-05	\$451.39
701-034-06	\$524.61
701-034-07	\$554.82
701-034-08	\$442.47
701-034-09	\$410.99

Exhibit C

CFD No. 90-2 of the Capistrano Unified School District

<u>Assessor's Parcel Number</u>	<u>FY 2013-2014 Special Tax</u>
701-034-10	\$366.49
701-034-11	\$371.46
701-034-12	\$320.73
701-034-13	\$361.13
701-034-14	\$313.79
701-035-01	\$286.41
701-035-02	\$291.61
701-035-03	\$403.49
701-035-04	\$293.82
701-035-05	\$363.41
701-035-06	\$521.37
701-035-07	\$341.08
701-035-08	\$300.77
701-035-09	\$302.82
701-041-38	\$28,056.41
701-041-39	\$56,112.81
701-041-40	\$106,404.13
701-054-01	\$1,767.49
701-054-02	\$1,784.01
701-054-03	\$1,767.49
701-054-04	\$1,784.01
701-054-05	\$1,520.58
701-054-06	\$1,784.01
701-054-07	\$1,767.49
701-054-08	\$1,784.01
701-054-09	\$1,610.56
701-054-10	\$1,767.49
701-054-11	\$1,520.58
701-054-12	\$1,784.01
701-054-13	\$1,767.49
701-054-14	\$1,784.01
701-054-15	\$1,520.58
701-054-16	\$1,767.49
701-054-17	\$1,520.58
701-054-18	\$1,784.01
701-054-19	\$1,784.01
701-054-20	\$1,520.58
701-054-21	\$1,767.49
701-054-22	\$1,610.56
701-054-23	\$1,520.58
701-054-24	\$1,630.56
701-054-25	\$1,520.58
701-054-26	\$1,710.98
701-054-27	\$1,520.58
701-054-28	\$1,767.49
701-054-29	\$1,610.56
701-054-30	\$1,784.01
701-054-31	\$1,710.98

Exhibit C

CFD No. 90-2 of the Capistrano Unified School District

<u>Assessor's Parcel Number</u>	<u>FY 2013-2014 Special Tax</u>
701-054-32	\$1,520.58
701-054-33	\$1,767.49
701-054-34	\$1,784.01
701-054-35	\$1,610.56
701-054-36	\$1,784.01
701-054-37	\$1,767.49
701-054-38	\$1,784.01
701-054-39	\$1,767.49
701-054-40	\$1,784.01
701-054-41	\$1,610.56
701-054-42	\$1,784.01
701-054-43	\$1,767.49
701-054-44	\$1,784.01
701-054-45	\$1,767.49
701-054-46	\$1,520.58
701-054-47	\$1,767.49
701-055-01	\$1,348.00
701-055-02	\$1,170.21
701-055-03	\$1,413.21
701-055-04	\$1,255.41
701-055-05	\$1,348.00
701-055-06	\$1,413.21
701-055-07	\$1,348.00
701-055-08	\$1,413.21
701-055-09	\$1,255.41
701-055-10	\$1,268.89
701-055-11	\$1,348.00
701-055-12	\$1,268.89
701-055-13	\$1,413.21
701-055-14	\$1,219.33
701-055-15	\$1,255.41
701-055-16	\$1,348.00
701-055-17	\$1,255.41
701-055-18	\$1,413.21
701-055-19	\$1,348.00
701-055-20	\$1,413.21
701-055-21	\$1,255.41
701-055-22	\$1,268.89
701-055-23	\$1,348.00
701-055-24	\$1,413.21
701-055-25	\$1,170.21
701-055-26	\$1,348.00
701-055-27	\$1,268.89
701-055-28	\$1,413.21
701-055-29	\$1,170.21
701-055-30	\$1,268.89
701-055-31	\$1,413.21
701-055-32	\$1,268.89

Exhibit C

CFD No. 90-2 of the Capistrano Unified School District

<u>Assessor's Parcel Number</u>	<u>FY 2013-2014 Special Tax</u>
701-055-33	\$1,413.21
701-055-34	\$1,348.00
701-055-35	\$1,413.21
701-055-36	\$1,348.00
701-055-37	\$1,268.89
701-055-38	\$1,348.00
701-055-39	\$1,413.21
701-055-40	\$1,170.21
701-055-41	\$1,348.00
701-055-42	\$1,413.21
701-055-43	\$1,219.33
701-055-44	\$1,268.89
701-055-45	\$1,413.21
701-055-46	\$1,268.89
701-055-47	\$1,170.21
701-055-48	\$1,268.89
701-055-49	\$1,255.41
701-055-50	\$1,413.21
701-055-51	\$1,268.89
701-055-52	\$1,413.21
701-055-53	\$1,268.89
701-055-54	\$1,348.00
701-055-55	\$1,413.21
701-055-56	\$1,348.00
701-055-57	\$1,268.89
701-055-58	\$1,348.00
701-055-59	\$1,413.21
701-055-60	\$1,219.33
701-055-61	\$1,413.21
701-055-62	\$1,268.89
701-055-63	\$1,255.41
701-055-64	\$1,268.89
701-055-65	\$1,348.00
701-055-66	\$1,268.89
701-055-67	\$1,170.21
701-055-68	\$1,413.21
701-055-69	\$1,255.41
701-055-70	\$1,413.21
701-055-71	\$1,348.00
701-055-72	\$1,413.21
701-055-73	\$1,170.21
701-055-74	\$1,413.21
701-055-75	\$1,348.00
701-055-76	\$1,170.21
701-055-77	\$1,348.00
701-055-78	\$1,268.89
701-055-79	\$1,413.21
701-056-01	\$1,268.89

Exhibit C

CFD No. 90-2 of the Capistrano Unified School District

<u>Assessor's Parcel Number</u>	<u>FY 2013-2014 Special Tax</u>
701-056-02	\$1,348.00
701-056-03	\$1,268.89
701-056-04	\$1,413.21
701-056-05	\$1,219.33
701-056-06	\$1,413.21
701-056-07	\$1,348.00
701-056-08	\$1,170.21
701-056-09	\$1,255.41
701-056-10	\$1,348.00
701-056-11	\$1,170.21
701-056-12	\$1,413.21
701-056-13	\$1,268.89
701-056-14	\$1,219.33
701-056-15	\$1,413.21
701-056-16	\$1,170.21
701-056-17	\$1,268.89
701-056-18	\$1,348.00
701-056-19	\$1,170.21
701-056-20	\$1,255.41
701-056-21	\$1,268.89
701-056-22	\$1,348.00
701-056-23	\$1,268.89
701-056-24	\$1,348.00
701-056-25	\$1,255.41
701-056-26	\$1,413.21
701-056-27	\$1,170.21
701-056-28	\$1,268.89
701-056-29	\$1,413.21
701-061-01	\$1,146.30
701-061-02	\$1,234.11
701-061-03	\$1,045.89
701-061-04	\$1,234.11
701-061-05	\$1,146.30
701-061-06	\$1,234.11
701-061-07	\$1,146.30
701-061-08	\$1,045.89
701-061-09	\$1,234.11
701-061-10	\$1,146.30
701-061-11	\$1,045.89
701-061-12	\$1,146.30
701-061-13	\$1,234.11
701-061-14	\$1,146.30
701-061-15	\$1,234.11
701-061-16	\$1,146.30
701-061-17	\$1,045.89
701-061-18	\$1,234.11
701-061-19	\$1,221.51
701-061-20	\$1,234.11

Exhibit C

CFD No. 90-2 of the Capistrano Unified School District

<u>Assessor's Parcel Number</u>	<u>FY 2013-2014 Special Tax</u>
701-061-21	\$1,146.30
701-061-22	\$1,146.30
701-061-23	\$1,045.89
701-061-24	\$1,234.11
701-061-25	\$1,146.30
701-061-26	\$1,234.11
701-061-27	\$1,045.89
701-061-28	\$1,146.30
701-061-29	\$1,234.11
701-061-30	\$1,146.30
701-061-31	\$1,234.11
701-061-32	\$1,234.11
701-061-33	\$1,102.83
701-061-34	\$1,146.30
701-061-35	\$1,045.89
701-061-36	\$1,146.30
701-061-37	\$1,146.30
701-061-38	\$1,045.89
701-061-39	\$1,234.11
701-061-40	\$1,146.30
701-061-41	\$1,234.11
701-061-42	\$1,146.30
701-061-43	\$1,234.11
701-061-44	\$1,146.30
701-061-45	\$1,045.89
701-061-46	\$1,234.11
701-061-47	\$1,045.89
701-061-48	\$1,234.11
701-061-49	\$1,146.30
701-061-50	\$1,234.11
701-061-51	\$1,234.11
701-061-52	\$1,146.30
701-061-53	\$1,234.11
701-071-01	\$1,537.10
701-071-02	\$1,497.54
701-071-03	\$1,354.53
701-071-04	\$1,537.10
701-071-05	\$1,354.53
701-071-06	\$1,497.54
701-071-07	\$1,537.10
701-071-08	\$1,497.54
701-071-09	\$1,497.54
701-071-10	\$1,537.10
701-071-11	\$1,537.10
701-071-12	\$1,497.54
701-071-13	\$1,354.53
701-071-14	\$1,497.54
701-071-15	\$1,537.10

Exhibit C

CFD No. 90-2 of the Capistrano Unified School District

<u>Assessor's Parcel Number</u>	<u>FY 2013-2014 Special Tax</u>
701-071-16	\$1,537.10
701-071-17	\$1,354.53
701-071-18	\$1,497.54
701-071-19	\$1,537.10
701-071-20	\$1,497.54
701-071-21	\$1,537.10
701-071-22	\$1,497.54
701-071-23	\$1,537.10
701-071-24	\$1,497.54
701-071-25	\$1,537.10
701-071-26	\$1,354.53
701-071-27	\$1,497.54
701-071-28	\$1,537.10
701-071-29	\$1,354.53
701-071-30	\$1,537.10
701-071-31	\$1,497.54
701-071-32	\$1,354.53
701-071-33	\$1,497.54
701-071-34	\$1,537.10
701-071-35	\$1,497.54
701-071-36	\$1,354.53
701-071-37	\$1,354.53
701-071-38	\$1,497.54
701-071-39	\$1,537.10
701-071-40	\$1,354.53
701-071-41	\$1,537.10
701-071-42	\$1,497.54
701-071-43	\$1,354.53
701-071-44	\$1,537.10
701-071-45	\$1,354.53
701-071-46	\$1,497.54
701-071-47	\$1,537.10
701-071-48	\$1,497.54
701-071-49	\$1,354.53
701-071-50	\$1,537.10
701-071-51	\$1,354.53
701-071-52	\$1,497.54
701-071-53	\$1,497.54
701-071-54	\$1,537.10
701-071-55	\$1,537.10
701-071-56	\$1,497.54
701-071-57	\$1,537.10
701-071-58	\$1,537.10
701-071-59	\$1,537.10
701-071-60	\$1,497.54
701-081-01	\$1,234.11
701-081-02	\$1,221.51
701-081-03	\$1,102.83

Exhibit C

CFD No. 90-2 of the Capistrano Unified School District

<u>Assessor's Parcel Number</u>	<u>FY 2013-2014 Special Tax</u>
701-081-04	\$1,234.11
701-081-05	\$1,221.51
701-081-06	\$1,234.11
701-081-07	\$1,102.83
701-081-08	\$1,234.11
701-081-09	\$1,234.11
701-081-10	\$1,221.51
701-081-11	\$1,234.11
701-081-12	\$1,146.30
701-081-13	\$1,045.89
701-081-14	\$1,146.30
701-081-15	\$1,234.11
701-082-01	\$1,537.10
701-082-02	\$1,497.54
701-082-03	\$1,537.10
701-082-04	\$1,354.53
701-082-05	\$1,354.53
701-082-06	\$1,537.10
701-082-07	\$1,408.43
701-082-08	\$1,537.10
701-082-09	\$1,497.54
701-082-10	\$1,354.53
701-082-11	\$1,625.78
701-082-12	\$1,551.44
701-082-13	\$1,497.54
701-082-14	\$1,354.53
701-082-15	\$1,537.10
701-082-16	\$1,354.53
701-082-17	\$1,537.10
701-082-18	\$1,537.10
701-082-19	\$1,497.54
701-082-20	\$1,537.10
701-091-01	\$975.47
701-091-02	\$840.71
701-091-03	\$975.47
701-091-04	\$840.71
701-091-05	\$975.47
701-091-06	\$840.71
701-091-07	\$975.47
701-091-08	\$728.56
701-091-09	\$975.47
701-091-10	\$840.71
701-091-11	\$728.56
701-091-12	\$728.56
701-091-13	\$840.71
701-091-14	\$975.47
701-091-15	\$840.71
701-091-16	\$974.60

Exhibit C

CFD No. 90-2 of the Capistrano Unified School District

<u>Assessor's Parcel Number</u>	<u>FY 2013-2014 Special Tax</u>
701-091-17	\$836.80
701-091-18	\$722.04
701-091-19	\$975.47
701-091-20	\$975.47
701-091-21	\$975.47
701-091-22	\$840.71
701-091-23	\$975.47
701-091-24	\$840.71
701-091-25	\$975.47
701-091-26	\$728.56
701-091-27	\$975.47
701-091-28	\$840.71
701-091-29	\$728.56
701-091-30	\$728.56
701-091-31	\$975.47
701-091-32	\$840.71
701-091-33	\$728.56
701-091-34	\$975.47
701-091-35	\$911.57
701-091-36	\$840.71
701-091-39	\$728.56
701-091-40	\$975.47
701-091-41	\$911.57
701-091-42	\$728.56
701-091-43	\$728.56
701-091-44	\$840.71
701-091-45	\$975.47
701-091-46	\$728.56
701-091-47	\$840.71
701-091-48	\$975.47
701-091-49	\$840.71
701-091-50	\$840.71
701-091-51	\$728.56
701-091-52	\$840.71
701-091-53	\$975.47
701-091-54	\$840.71
701-091-55	\$728.56
701-091-56	\$975.47
701-091-57	\$840.71
701-091-58	\$975.47
701-091-59	\$840.71
701-091-72	\$911.57
701-091-73	\$728.56
701-101-01	\$728.56
701-101-02	\$975.47
701-101-03	\$840.71
701-101-04	\$728.56
701-101-05	\$975.47

Exhibit C

CFD No. 90-2 of the Capistrano Unified School District

<u>Assessor's Parcel Number</u>	<u>FY 2013-2014 Special Tax</u>
701-101-06	\$728.56
701-101-07	\$840.71
701-101-08	\$728.56
701-101-09	\$840.71
701-101-10	\$728.56
701-101-11	\$840.71
701-101-12	\$728.56
701-101-13	\$975.47
701-101-14	\$840.71
701-101-15	\$728.56
701-101-16	\$840.71
701-101-17	\$975.47
701-101-18	\$728.56
701-101-19	\$975.47
701-101-20	\$840.71
701-101-21	\$975.47
701-101-22	\$728.56
701-101-23	\$840.71
701-101-24	\$911.57
701-101-25	\$840.71
701-101-26	\$840.71
701-101-27	\$975.47
701-101-28	\$728.56
701-101-29	\$728.56
701-101-30	\$840.71
701-101-31	\$975.47
701-101-32	\$728.56
701-101-33	\$840.71
701-101-34	\$975.47
701-101-35	\$728.56
701-101-36	\$840.71
701-101-37	\$975.47
701-101-38	\$840.71
701-101-39	\$911.57
701-101-40	\$911.57
701-101-41	\$840.71
701-101-42	\$975.47
701-101-43	\$728.56
701-101-44	\$975.47
701-101-45	\$728.56
701-101-46	\$840.71
701-101-47	\$911.57
701-101-48	\$728.56
701-101-49	\$975.47
701-101-50	\$728.56
701-101-51	\$975.47
701-101-52	\$975.47
701-101-53	\$840.71

Exhibit C

CFD No. 90-2 of the Capistrano Unified School District

<u>Assessor's Parcel Number</u>	<u>FY 2013-2014 Special Tax</u>
701-101-54	\$911.57
701-101-55	\$728.56
701-101-56	\$975.47
701-101-57	\$840.71
701-101-58	\$728.56
701-101-59	\$840.71
701-101-60	\$911.57
701-101-61	\$840.71
701-111-01	\$1,145.00
701-111-02	\$1,088.92
701-111-03	\$1,035.46
701-111-04	\$1,088.92
701-111-05	\$1,145.00
701-111-06	\$967.21
701-111-07	\$1,145.00
701-111-08	\$1,035.46
701-111-09	\$1,161.52
701-111-10	\$1,088.92
701-111-11	\$1,098.49
701-111-12	\$1,145.00
701-111-13	\$1,028.07
701-111-14	\$1,098.49
701-111-15	\$1,088.92
701-111-16	\$1,145.00
701-111-17	\$967.21
701-111-18	\$1,145.00
701-111-19	\$1,035.46
701-111-20	\$1,145.00
701-111-21	\$1,088.92
701-111-22	\$1,160.65
701-111-23	\$1,088.92
701-111-24	\$1,098.49
701-111-25	\$1,088.92
701-111-26	\$1,079.79
701-111-27	\$1,028.07
701-111-28	\$1,098.49
701-111-29	\$1,035.46
701-111-30	\$1,145.00
701-111-31	\$1,028.07
701-111-32	\$1,160.65
701-111-33	\$967.21
701-111-34	\$1,098.49
701-111-35	\$1,098.49
701-111-36	\$1,035.46
701-111-37	\$1,098.49
701-111-38	\$967.21
701-111-39	\$1,145.00
701-111-40	\$1,088.92

Exhibit C

CFD No. 90-2 of the Capistrano Unified School District

<u>Assessor's Parcel Number</u>	<u>FY 2013-2014 Special Tax</u>
701-111-41	\$1,035.46
701-111-42	\$1,145.00
701-111-43	\$1,088.92
701-111-44	\$1,160.65
701-111-45	\$1,035.46
701-111-46	\$1,088.92
701-111-47	\$1,035.46
701-111-48	\$1,145.00
701-111-49	\$1,088.92
701-111-50	\$1,145.00
701-121-01	\$967.21
701-121-02	\$1,161.52
701-121-03	\$1,088.92
701-121-04	\$1,145.00
701-121-05	\$1,088.92
701-121-06	\$1,088.92
701-121-07	\$1,035.46
701-121-08	\$1,088.92
701-121-09	\$1,145.00
701-121-10	\$1,088.92
701-121-11	\$1,145.00
701-121-12	\$967.21
701-121-13	\$1,028.07
701-121-14	\$1,160.65
701-121-15	\$1,079.79
701-121-16	\$1,145.00
701-121-17	\$1,035.46
701-121-18	\$1,098.49
701-121-19	\$1,088.92
701-121-20	\$1,035.46
701-121-21	\$1,028.07
701-121-22	\$1,098.49
701-121-23	\$1,088.92
701-121-24	\$1,088.92
701-121-25	\$1,035.46
701-121-26	\$1,088.92
701-121-27	\$1,088.92
701-121-28	\$1,035.46
701-121-29	\$1,088.92
701-121-30	\$1,088.92
701-121-31	\$1,035.46
701-121-32	\$1,160.65
701-121-33	\$1,088.92
701-121-34	\$1,098.49
701-121-35	\$1,088.92
701-121-36	\$1,160.65
701-121-37	\$1,035.46
701-121-38	\$1,088.92

Exhibit C

CFD No. 90-2 of the Capistrano Unified School District

<u>Assessor's Parcel Number</u>	<u>FY 2013-2014 Special Tax</u>
701-121-39	\$1,145.00
701-121-40	\$1,079.79
701-121-41	\$1,145.00
701-121-42	\$1,088.92
701-121-43	\$1,145.00
701-121-44	\$1,088.92
701-121-45	\$1,145.00
701-121-46	\$1,035.46
701-121-47	\$1,028.07
701-121-48	\$1,145.00
701-121-49	\$1,028.07
701-121-50	\$1,145.00
701-131-01	\$1,098.49
701-131-02	\$1,035.46
701-131-03	\$1,093.27
701-131-04	\$1,161.52
701-131-05	\$1,028.07
701-131-06	\$1,098.49
701-131-07	\$1,028.07
701-131-08	\$1,098.49
701-131-09	\$1,098.49
701-131-10	\$1,028.07
701-131-11	\$1,098.49
701-131-12	\$967.21
701-131-13	\$1,028.07
701-131-14	\$1,098.49
701-131-15	\$1,028.07
701-131-16	\$1,035.46
701-131-17	\$1,088.92
701-131-18	\$1,145.00
701-131-19	\$1,035.46
701-131-20	\$1,098.49
701-131-21	\$1,028.07
701-131-22	\$1,098.49
701-131-23	\$1,028.07
701-131-24	\$1,098.49
701-131-25	\$1,028.07
701-131-26	\$1,098.49
701-131-27	\$967.21
701-131-28	\$1,098.49
701-131-29	\$1,028.07
701-131-30	\$1,161.52
701-131-31	\$1,028.07
701-131-32	\$1,035.46
701-131-33	\$1,088.92
701-131-34	\$1,035.46
701-131-35	\$1,145.00
701-131-36	\$1,088.92

Exhibit C

CFD No. 90-2 of the Capistrano Unified School District

<u>Assessor's Parcel Number</u>	<u>FY 2013-2014 Special Tax</u>
701-131-37	\$967.21
701-131-38	\$1,098.49
701-131-39	\$1,028.07
701-131-40	\$1,098.49
701-151-14	\$2,308.69
701-151-15	\$2,151.33
701-151-16	\$2,151.33
701-151-17	\$2,380.85
701-151-18	\$2,038.31
701-151-19	\$2,380.85
701-151-20	\$2,038.31
701-151-21	\$2,380.85
701-151-22	\$2,038.31
701-151-23	\$2,380.85
701-151-24	\$2,151.33
701-151-25	\$2,308.69
701-151-26	\$2,380.85
701-151-27	\$2,038.31
701-181-09	\$1,511.45
701-181-10	\$1,545.36
701-181-11	\$1,561.01
701-181-12	\$1,511.45
701-181-13	\$1,561.01
701-181-14	\$1,545.36
701-181-15	\$1,511.45
701-181-16	\$1,511.45
701-181-17	\$1,561.01
701-181-18	\$1,545.36
701-181-19	\$1,511.45
701-181-20	\$1,534.06
701-181-21	\$1,545.36
701-181-22	\$1,648.82
701-192-01	\$1,820.52
701-192-02	\$1,576.66
701-192-03	\$1,684.46
701-192-04	\$1,539.71
701-192-05	\$1,576.66
701-192-06	\$1,820.52
701-192-07	\$1,539.71
701-192-08	\$1,576.66
701-192-09	\$1,820.52
701-192-10	\$1,696.63
701-192-11	\$1,684.46
701-192-12	\$1,696.63
701-192-13	\$1,576.66
701-192-14	\$1,820.52
701-192-15	\$1,696.63
701-192-16	\$1,820.52

Exhibit C

CFD No. 90-2 of the Capistrano Unified School District

<u>Assessor's Parcel Number</u>	<u>FY 2013-2014 Special Tax</u>
701-192-17	\$1,684.46
701-192-18	\$1,539.71
701-192-19	\$1,684.46
701-192-20	\$1,576.66
701-192-21	\$1,696.63
701-192-22	\$1,820.52
701-192-23	\$1,684.46
701-192-24	\$1,161.95
701-192-25	\$1,696.63
701-192-26	\$1,576.66
701-192-27	\$1,820.52
701-192-28	\$1,684.46
701-192-29	\$1,696.63
701-192-30	\$1,820.52
701-192-31	\$1,684.46
701-192-32	\$1,161.95
701-192-33	\$1,820.52
701-192-34	\$1,539.71
701-192-35	\$1,684.46
701-192-36	\$1,820.52
701-192-37	\$1,576.66
701-192-38	\$1,820.52
701-192-39	\$1,696.63
701-192-40	\$1,539.71
701-192-41	\$1,576.66
701-193-01	\$1,696.63
701-193-02	\$1,576.66
701-193-03	\$1,684.46
701-193-04	\$1,539.71
701-193-05	\$1,576.66
701-193-06	\$1,820.52
701-193-07	\$1,684.46
701-193-08	\$1,576.66
701-193-09	\$1,820.52
701-193-10	\$1,576.66
701-193-11	\$1,684.46
701-193-12	\$1,539.71
701-193-13	\$1,820.52
701-193-14	\$1,696.63
701-193-16	\$1,161.95
701-193-17	\$1,576.66
701-193-18	\$1,684.46
701-193-19	\$1,820.52
701-193-20	\$1,696.63
701-193-21	\$1,820.52
701-201-01	\$813.32
701-201-02	\$878.09
701-201-03	\$1,014.16

Exhibit C

CFD No. 90-2 of the Capistrano Unified School District

<u>Assessor's Parcel Number</u>	<u>FY 2013-2014 Special Tax</u>
701-201-04	\$943.30
701-201-05	\$878.09
701-201-06	\$1,014.16
701-201-07	\$878.09
701-201-08	\$943.30
701-201-09	\$878.09
701-201-10	\$1,014.16
701-201-11	\$943.30
701-201-12	\$1,014.16
701-201-13	\$943.30
701-201-14	\$1,014.16
701-201-15	\$878.09
701-201-16	\$943.30
701-201-17	\$1,014.16
701-201-18	\$943.30
701-201-19	\$878.09
701-201-20	\$1,014.16
701-201-21	\$813.32
701-201-22	\$1,014.16
701-201-23	\$878.09
701-201-24	\$943.30
701-201-25	\$878.09
701-201-26	\$813.32
701-201-27	\$1,014.16
701-201-28	\$1,014.16
701-201-29	\$943.30
701-201-30	\$878.09
701-201-31	\$1,014.16
701-201-32	\$943.30
701-201-33	\$813.32
701-201-34	\$1,014.16
701-201-35	\$943.30
701-201-36	\$1,014.16
701-201-37	\$878.09
701-201-38	\$943.30
701-201-39	\$1,014.16
701-211-01	\$1,014.16
701-211-02	\$878.09
701-211-03	\$943.30
701-211-04	\$1,014.16
701-211-05	\$878.09
701-211-06	\$943.30
701-211-07	\$1,014.16
701-211-08	\$943.30
701-211-09	\$813.32
701-211-10	\$943.30
701-211-11	\$1,014.16
701-211-12	\$1,014.16

Exhibit C

CFD No. 90-2 of the Capistrano Unified School District

<u>Assessor's Parcel Number</u>	<u>FY 2013-2014 Special Tax</u>
701-211-13	\$813.32
701-211-14	\$1,014.16
701-211-15	\$943.30
701-211-16	\$878.09
701-211-17	\$1,014.16
701-211-18	\$943.30
701-211-19	\$813.32
701-211-20	\$1,014.16
701-211-21	\$878.09
701-211-22	\$943.30
701-211-23	\$1,014.16
701-211-24	\$878.09
701-211-25	\$1,014.16
701-211-26	\$878.09
701-211-27	\$943.30
701-211-28	\$813.32
701-211-29	\$1,014.16
701-211-30	\$943.30
701-211-31	\$1,014.16
701-211-32	\$943.30
701-211-33	\$878.09
701-211-34	\$1,014.16
701-211-35	\$943.30
701-211-36	\$878.09
701-211-37	\$1,014.16
701-211-38	\$878.09
701-211-39	\$943.30
701-211-40	\$813.32
701-211-41	\$1,014.16
701-211-42	\$943.30
701-211-43	\$878.09
701-211-44	\$1,014.16
701-211-45	\$943.30
701-211-46	\$1,014.16
701-223-01	\$1,807.05
701-223-02	\$2,037.00
701-223-03	\$1,918.33
701-223-04	\$2,040.92
701-223-05	\$1,933.98
701-223-06	\$1,918.33
701-223-07	\$2,037.00
701-223-08	\$1,807.05
701-223-09	\$1,933.98
701-223-10	\$2,040.92
701-223-11	\$2,040.92
701-223-12	\$1,918.33
701-223-13	\$1,807.05
701-223-14	\$2,037.00

Exhibit C

CFD No. 90-2 of the Capistrano Unified School District

<u>Assessor's Parcel Number</u>	<u>FY 2013-2014 Special Tax</u>
701-223-15	\$2,037.00
701-223-16	\$1,933.98
701-223-17	\$2,040.92
701-223-18	\$1,918.33
701-223-19	\$2,037.00
701-223-20	\$1,807.05
701-223-21	\$1,933.98
701-223-22	\$2,040.92
701-223-23	\$2,037.00
701-223-24	\$1,807.05
701-223-25	\$1,235.42
701-223-26	\$1,504.93
701-223-27	\$1,599.70
701-223-28	\$1,504.93
701-223-29	\$1,235.42
701-223-30	\$1,504.93
701-223-31	\$1,504.93
701-223-32	\$1,235.42
701-223-33	\$1,599.70
701-223-34	\$1,235.42
701-223-35	\$1,599.70
701-223-36	\$1,235.42
701-223-37	\$1,599.70
701-223-38	\$1,235.42
701-223-39	\$1,288.02
701-223-40	\$1,599.70
701-223-41	\$1,314.97
701-223-42	\$1,556.66
701-224-05	\$1,807.05
701-224-07	\$1,918.33
701-224-10	\$1,918.33
701-224-11	\$2,040.92
701-224-12	\$1,933.98
701-224-13	\$1,807.05
701-224-14	\$2,040.92
701-224-15	\$2,037.00
701-224-16	\$1,918.33
701-224-17	\$1,807.05
701-224-18	\$2,037.00
701-224-25	\$1,235.42
701-224-26	\$1,599.70
701-224-27	\$1,558.83
701-224-28	\$1,599.70
701-224-29	\$1,504.93
701-224-30	\$1,599.70
701-224-31	\$1,504.93
701-224-32	\$1,599.70
701-224-33	\$1,558.83

Exhibit C

CFD No. 90-2 of the Capistrano Unified School District

<u>Assessor's Parcel Number</u>	<u>FY 2013-2014 Special Tax</u>
701-224-45	\$2,037.00
701-224-46	\$1,933.98
701-224-47	\$2,040.92
701-224-48	\$2,037.00
701-224-49	\$2,037.00
701-224-50	\$1,807.05
701-224-51	\$1,933.98
701-224-52	\$2,040.92
701-224-53	\$1,807.05
701-224-54	\$1,918.33
701-224-55	\$1,504.93
701-231-01	\$1,403.21
701-231-02	\$1,258.89
701-231-03	\$1,398.86
701-231-04	\$1,403.21
701-231-05	\$1,398.86
701-231-06	\$1,290.62
701-231-07	\$1,309.75
701-231-08	\$1,398.86
701-231-09	\$1,403.21
701-231-10	\$1,290.62
701-231-11	\$1,398.86
701-231-12	\$1,403.21
701-231-13	\$1,398.86
701-231-14	\$1,354.53
701-231-15	\$1,398.86
701-231-16	\$1,290.62
701-231-17	\$1,309.75
701-231-18	\$1,290.62
701-231-19	\$1,398.86
701-231-20	\$1,309.75
701-231-21	\$1,398.86
701-231-22	\$1,258.89
701-231-23	\$1,290.62
701-231-24	\$1,309.75
701-231-25	\$1,398.86
701-231-26	\$1,290.62
701-231-27	\$1,258.89
701-231-28	\$1,398.86
701-231-29	\$1,403.21
701-231-30	\$1,398.86
701-231-31	\$1,290.62
701-231-32	\$1,258.89
701-231-33	\$1,290.62
701-231-34	\$1,258.89
701-231-35	\$1,290.62
701-231-36	\$1,354.53
701-231-37	\$1,290.62

Exhibit C

CFD No. 90-2 of the Capistrano Unified School District

<u>Assessor's Parcel Number</u>	<u>FY 2013-2014 Special Tax</u>
701-231-38	\$1,258.89
701-231-39	\$1,309.75
701-231-40	\$1,398.86
701-242-01	\$1,918.33
701-242-02	\$2,037.00
701-242-03	\$1,933.98
701-242-04	\$2,040.92
701-242-05	\$1,807.05
701-242-06	\$2,040.92
701-242-07	\$1,933.98
701-242-08	\$2,037.00
701-242-09	\$1,955.28
701-242-10	\$1,807.05
701-242-11	\$2,040.92
701-242-12	\$1,807.05
701-242-13	\$2,037.00
701-242-14	\$1,918.33
701-242-15	\$2,040.92
701-242-16	\$1,807.05
701-242-17	\$1,314.97
701-242-18	\$1,558.83
701-242-19	\$1,314.97
701-242-20	\$1,688.37
701-242-21	\$1,558.83
701-242-22	\$1,688.37
701-242-23	\$1,558.83
701-242-24	\$1,314.97
701-242-25	\$1,688.37
701-242-26	\$1,558.83
701-242-27	\$1,314.97
701-242-28	\$1,558.83
701-242-29	\$1,314.97
701-242-30	\$1,558.83
701-242-31	\$1,688.37
701-242-32	\$1,314.97
701-242-33	\$1,688.37
701-242-34	\$1,314.97
701-242-35	\$1,558.83
701-242-36	\$1,688.37
701-242-37	\$1,558.83
701-242-38	\$1,314.97
701-242-39	\$1,558.83
701-242-40	\$1,314.97
701-242-41	\$1,688.37
701-242-42	\$1,314.97
701-242-43	\$1,688.37
701-242-44	\$1,558.83
701-242-45	\$1,314.97

Exhibit C

CFD No. 90-2 of the Capistrano Unified School District

<u>Assessor's Parcel Number</u>	<u>FY 2013-2014 Special Tax</u>
701-242-46	\$1,688.37
701-243-01	\$1,398.86
701-243-02	\$1,403.21
701-243-03	\$1,398.86
701-243-04	\$1,354.53
701-243-05	\$1,398.86
701-243-06	\$1,403.21
701-243-07	\$1,398.86
701-243-08	\$1,290.62
701-243-09	\$1,403.21
701-243-10	\$1,398.86
701-243-11	\$1,290.62
701-243-12	\$1,354.53
701-243-13	\$1,403.21
701-243-14	\$1,290.62
701-243-15	\$1,398.86
701-243-16	\$1,403.21
701-243-17	\$1,398.86
701-243-18	\$1,354.53
701-243-19	\$1,398.86
701-243-20	\$1,290.62
701-243-21	\$1,398.86
701-243-22	\$1,403.21
701-243-23	\$1,354.53
701-243-24	\$1,398.86
701-243-25	\$1,290.62
701-243-26	\$1,398.86
701-243-27	\$1,290.62
701-243-28	\$1,354.53
701-243-29	\$1,403.21
701-243-30	\$1,290.62
701-243-31	\$1,354.53
701-244-01	\$943.30
701-244-02	\$1,014.16
701-244-03	\$878.09
701-244-04	\$943.30
701-244-05	\$878.09
701-244-06	\$1,014.16
701-244-07	\$813.32
701-244-08	\$1,014.16
701-244-09	\$813.32
701-244-10	\$1,014.16
701-244-11	\$878.09
701-244-12	\$1,014.16
701-244-13	\$1,014.16
701-244-14	\$878.09
701-244-15	\$943.30
701-244-16	\$1,014.16

Exhibit C

CFD No. 90-2 of the Capistrano Unified School District

<u>Assessor's Parcel Number</u>	<u>FY 2013-2014 Special Tax</u>
701-244-17	\$878.09
701-244-18	\$943.30
701-244-19	\$1,014.16
701-244-20	\$943.30
701-244-21	\$1,014.16
701-244-22	\$878.09
701-244-23	\$1,014.16
701-244-24	\$943.30
701-244-25	\$1,014.16
701-244-26	\$878.09
701-244-27	\$1,014.16
701-244-28	\$878.09
701-244-29	\$943.30
701-244-30	\$1,014.16
701-244-31	\$878.09
701-244-32	\$943.30
701-244-33	\$878.09
701-244-34	\$1,014.16
701-244-35	\$813.32
701-244-36	\$1,014.16
701-244-37	\$878.09
701-244-38	\$1,014.16
701-244-39	\$878.09
701-244-40	\$1,014.16
701-244-41	\$813.32
701-244-42	\$878.09
701-244-43	\$1,014.16
701-244-44	\$878.09
701-244-45	\$1,014.16
701-244-46	\$943.30
701-244-47	\$878.09
701-244-48	\$1,398.86
701-244-49	\$1,403.21
701-244-50	\$1,354.53
701-244-51	\$1,290.62
701-244-52	\$1,354.53
701-244-53	\$1,290.62
701-244-54	\$1,290.62
701-244-55	\$1,403.21
701-244-56	\$1,398.86
701-244-57	\$1,403.21
701-244-58	\$1,354.53
701-244-59	\$1,403.21
701-244-60	\$1,398.86
701-244-61	\$1,290.62
701-244-62	\$1,398.86
701-244-63	\$1,290.62
701-244-64	\$1,354.53

Exhibit C

CFD No. 90-2 of the Capistrano Unified School District

<u>Assessor's Parcel Number</u>	<u>FY 2013-2014 Special Tax</u>
701-244-65	\$1,403.21
701-244-66	\$1,354.53
701-244-67	\$1,290.62
701-244-68	\$1,398.86
701-244-69	\$1,403.21
701-244-70	\$1,398.86
701-244-71	\$1,290.62
701-244-72	\$1,398.86
701-244-73	\$1,403.21
701-244-74	\$1,354.53
701-244-75	\$1,403.21
701-244-76	\$1,398.86
701-244-77	\$1,290.62
701-244-78	\$1,354.53
701-244-79	\$1,398.86
701-244-80	\$1,403.65
701-244-81	\$1,290.62
701-244-82	\$1,398.86
701-244-83	\$1,290.62
701-301-01	\$1,198.03
701-301-02	\$1,367.13
701-301-03	\$1,094.14
701-301-04	\$1,270.19
701-301-05	\$1,094.14
701-301-06	\$1,289.32
701-301-07	\$1,367.13
701-301-08	\$1,094.14
701-301-09	\$1,291.93
701-301-10	\$1,198.03
701-301-11	\$1,367.13
701-301-12	\$1,289.32
701-301-13	\$1,292.36
701-301-14	\$1,198.03
701-301-15	\$1,094.14
701-301-16	\$1,270.19
701-301-17	\$1,198.03
701-301-18	\$1,367.13
701-301-19	\$1,094.14
701-301-21	\$1,094.14
701-301-22	\$1,270.19
701-301-23	\$1,198.03
701-301-24	\$1,270.19
701-301-25	\$1,198.03
701-301-26	\$1,270.19
701-301-27	\$1,198.03
701-301-28	\$1,270.19
701-301-29	\$1,270.19
701-301-30	\$1,094.14

Exhibit C

CFD No. 90-2 of the Capistrano Unified School District

<u>Assessor's Parcel Number</u>	<u>FY 2013-2014 Special Tax</u>
701-301-31	\$1,094.14
701-301-32	\$1,198.03
701-301-33	\$1,367.57
701-301-34	\$1,198.03
701-301-35	\$1,094.14
701-301-36	\$1,174.56
701-301-37	\$1,198.03
701-301-38	\$1,094.14
701-301-39	\$1,367.13
701-301-50	\$1,344.53
701-301-51	\$1,350.18
701-301-52	\$1,167.60
701-301-53	\$1,350.18
701-325-01	\$751.13
701-325-02	\$273.94
701-325-03	\$1,684.04
701-325-04	\$349.76
701-341-01	\$48,241.27
701-352-02	\$1,511.45
701-352-03	\$1,361.92
701-352-04	\$1,511.45
701-352-05	\$1,511.45
701-352-06	\$1,292.36
701-352-07	\$1,511.45
701-352-08	\$1,361.92
701-352-09	\$1,511.45
701-352-10	\$1,361.92
701-352-11	\$1,511.45
701-352-12	\$1,361.92
701-352-13	\$1,511.45
701-352-14	\$1,361.92
701-352-15	\$1,292.36
701-352-16	\$1,511.45
701-352-17	\$1,361.92
701-352-18	\$1,292.36
701-352-19	\$1,361.92
701-352-20	\$1,511.45
701-352-21	\$1,361.92
701-352-22	\$1,511.45
701-352-23	\$1,361.92
701-352-24	\$1,511.45
701-352-25	\$1,361.92
701-352-26	\$1,511.45
701-352-27	\$1,361.92
701-352-28	\$1,292.36
701-352-29	\$1,361.92
701-352-30	\$1,361.92
701-352-31	\$1,292.36

Exhibit C

CFD No. 90-2 of the Capistrano Unified School District

<u>Assessor's Parcel Number</u>	<u>FY 2013-2014 Special Tax</u>
701-352-32	\$1,361.92
701-352-33	\$1,511.45
701-352-34	\$1,361.92
701-352-35	\$1,292.36
701-352-36	\$1,511.45
701-352-37	\$1,511.45
701-352-38	\$1,511.45
701-352-39	\$1,292.36
701-352-40	\$1,511.45
701-353-01	\$1,511.45
701-353-02	\$1,361.92
701-353-03	\$1,361.92
701-353-04	\$1,292.36
701-353-05	\$1,361.92
701-353-06	\$1,511.45
701-353-07	\$1,361.92
701-353-08	\$1,292.36
701-353-09	\$1,361.92
701-353-10	\$1,292.36
701-353-11	\$1,361.92
701-353-12	\$1,292.36
701-353-13	\$1,361.92
701-353-14	\$1,292.36
701-353-15	\$1,361.92
701-353-16	\$1,511.45
701-353-17	\$1,292.36
701-353-18	\$1,292.36
701-353-19	\$1,417.56
701-353-20	\$1,568.40
701-353-21	\$1,361.92
701-353-22	\$1,292.36
701-353-23	\$1,292.36
701-353-24	\$1,361.92
701-353-25	\$1,511.45
701-353-26	\$1,511.45
701-353-27	\$1,361.92
701-353-28	\$1,511.45
701-353-29	\$1,511.45
701-353-30	\$1,292.36
701-353-31	\$1,361.92
701-353-32	\$1,292.36
701-353-33	\$1,361.92
701-353-34	\$1,511.45
701-362-01	\$1,972.23
701-362-02	\$1,610.56
701-362-03	\$1,881.82
701-362-04	\$1,972.23
701-362-05	\$1,881.82

Exhibit C

CFD No. 90-2 of the Capistrano Unified School District

<u>Assessor's Parcel Number</u>	<u>FY 2013-2014 Special Tax</u>
701-362-06	\$1,610.56
701-362-07	\$1,972.23
701-362-08	\$1,881.82
701-362-09	\$1,972.23
701-362-10	\$1,610.56
701-362-11	\$1,972.23
701-362-12	\$1,881.82
701-362-13	\$1,610.56
701-362-14	\$1,972.23
701-362-15	\$1,881.82
701-362-16	\$1,972.23
701-362-17	\$1,610.56
701-362-18	\$1,881.82
701-362-19	\$1,610.56
701-362-20	\$1,972.23
701-362-21	\$1,972.23
701-362-22	\$1,881.82
701-362-23	\$1,610.56
701-362-24	\$1,881.82
701-362-25	\$1,972.23
701-362-26	\$1,610.56
701-362-27	\$1,972.23
701-362-28	\$1,978.32
701-362-29	\$1,881.82
701-362-30	\$1,978.32
701-362-31	\$1,610.56
701-362-32	\$1,881.82
701-362-33	\$1,978.32
701-362-34	\$1,610.56
701-362-35	\$1,881.82
701-362-36	\$1,610.56
701-362-37	\$1,972.23
701-363-01	\$1,881.82
701-363-02	\$1,881.82
701-363-03	\$2,061.35
701-363-04	\$1,881.82
701-363-05	\$1,610.56
701-363-06	\$1,978.32
701-363-07	\$1,610.56
701-363-08	\$1,978.32
701-363-09	\$1,881.82
701-363-10	\$1,610.56
701-363-11	\$1,978.32
701-363-12	\$1,881.82
701-363-13	\$1,978.32
701-363-14	\$1,610.56
701-363-15	\$1,881.82
701-363-16	\$1,610.56

Exhibit C

CFD No. 90-2 of the Capistrano Unified School District

<u>Assessor's Parcel Number</u>	<u>FY 2013-2014 Special Tax</u>
701-363-17	\$1,978.32
701-363-18	\$1,881.82
701-363-19	\$1,978.32
701-363-20	\$1,610.56
701-363-21	\$1,978.32
701-363-22	\$1,881.82
701-363-23	\$1,978.32
701-363-24	\$1,881.82
701-363-25	\$1,978.32
701-363-26	\$1,610.56
701-363-27	\$1,881.82
701-363-28	\$1,972.23
701-363-29	\$1,881.82
701-363-30	\$1,972.23
701-363-31	\$1,610.56
701-363-32	\$1,881.82
701-363-33	\$1,972.23
701-363-34	\$1,881.82
701-363-35	\$1,972.23
701-363-36	\$1,881.82
701-363-37	\$1,972.23
701-363-38	\$1,881.82
701-363-39	\$1,610.56
701-371-22	\$3,916.60
701-371-23	\$884.78
701-371-24	\$880.76
701-372-01	\$1,049.37
701-372-02	\$699.05
701-372-03	\$452.49
701-372-04	\$570.05
701-382-01	\$983.73
701-382-02	\$1,011.55
701-382-03	\$1,048.50
701-382-04	\$1,066.32
701-382-05	\$1,048.50
701-382-06	\$1,066.32
701-382-07	\$1,011.55
701-382-08	\$983.73
701-382-09	\$1,066.32
701-382-10	\$1,048.50
701-382-11	\$1,066.32
701-382-12	\$983.73
701-382-13	\$1,011.55
701-382-14	\$1,066.32
701-382-15	\$1,048.50
701-382-16	\$1,048.50
701-382-17	\$1,011.55
701-382-18	\$983.73

Exhibit C

CFD No. 90-2 of the Capistrano Unified School District

<u>Assessor's Parcel Number</u>	<u>FY 2013-2014 Special Tax</u>
701-382-19	\$1,066.32
701-382-20	\$1,048.50
701-382-21	\$983.73
701-382-22	\$1,011.55
701-382-23	\$1,048.50
701-382-24	\$1,066.32
701-382-25	\$1,048.50
701-382-26	\$1,048.50
701-382-27	\$1,066.32
701-382-28	\$1,048.50
701-382-29	\$1,011.55
701-382-30	\$983.73
701-382-31	\$1,011.55
701-382-32	\$1,066.32
701-382-33	\$1,048.50
701-382-34	\$1,011.55
701-382-35	\$1,048.50
701-382-36	\$1,011.55
701-382-37	\$1,066.32
701-382-38	\$1,066.32
701-382-39	\$1,048.50
701-382-40	\$983.73
701-382-41	\$1,011.55
701-382-42	\$983.73
701-382-43	\$1,011.55
701-382-44	\$1,048.50
701-382-45	\$1,066.32
701-382-46	\$1,048.50
701-382-47	\$1,066.32
701-382-48	\$1,011.55
701-382-49	\$1,048.50
701-382-50	\$1,011.55
701-383-01	\$983.73
701-383-02	\$1,011.55
701-383-03	\$1,048.50
701-383-04	\$1,066.32
701-383-05	\$1,048.50
701-383-06	\$1,066.32
701-383-07	\$1,011.55
701-383-08	\$983.73
701-383-09	\$983.73
701-383-10	\$1,011.55
701-383-11	\$1,066.32
701-383-12	\$1,048.50
701-383-13	\$1,066.32
701-383-14	\$1,048.50
701-383-15	\$1,011.55
701-383-16	\$1,066.32

Exhibit C

CFD No. 90-2 of the Capistrano Unified School District

<u>Assessor's Parcel Number</u>	<u>FY 2013-2014 Special Tax</u>
701-383-17	\$1,048.50
701-383-18	\$1,011.55
701-383-19	\$983.73
701-383-20	\$1,011.55
701-383-21	\$1,048.50
701-383-22	\$983.73
701-383-23	\$1,066.32
701-383-24	\$1,011.55
701-383-25	\$1,048.50
701-383-26	\$983.73
701-383-27	\$1,066.32
701-383-28	\$1,048.50
701-383-29	\$1,066.32
701-383-30	\$1,011.55
701-383-31	\$983.73
701-383-32	\$1,011.55
701-383-33	\$1,011.55
701-383-34	\$983.73
701-383-35	\$1,068.49
701-383-36	\$1,048.50
701-383-37	\$983.73
701-383-38	\$1,066.32
701-383-39	\$1,048.50
701-383-40	\$1,011.55
701-383-41	\$1,048.50
701-383-42	\$1,066.32
701-383-43	\$1,011.55
701-392-01	\$1,092.40
701-392-02	\$1,024.15
701-392-03	\$1,257.15
701-392-04	\$1,092.40
701-392-05	\$1,257.15
701-392-06	\$1,092.40
701-392-07	\$1,092.40
701-392-08	\$1,257.15
701-392-09	\$1,092.40
701-392-10	\$1,257.15
701-392-11	\$1,092.40
701-392-12	\$1,257.15
701-392-13	\$1,257.15
701-392-14	\$1,092.40
701-392-15	\$1,024.15
701-392-16	\$1,092.40
701-392-17	\$1,257.15
701-392-18	\$1,257.15
701-392-19	\$1,092.40
701-392-20	\$1,024.15
701-392-21	\$1,092.40

Exhibit C

CFD No. 90-2 of the Capistrano Unified School District

<u>Assessor's Parcel Number</u>	<u>FY 2013-2014 Special Tax</u>
701-392-22	\$1,257.15
701-392-23	\$1,257.15
701-392-24	\$1,024.15
701-392-25	\$1,092.40
701-392-26	\$1,024.15
701-392-27	\$1,092.40
701-392-28	\$1,024.15
701-392-29	\$1,092.40
701-392-30	\$1,334.96
701-392-31	\$1,092.40
701-392-32	\$1,257.15
701-392-33	\$1,024.15
701-392-34	\$1,257.15
701-392-35	\$1,092.40
701-392-36	\$1,024.15
701-392-37	\$1,257.15
701-392-38	\$1,024.15
701-392-39	\$1,257.15
701-392-40	\$1,024.15
701-392-41	\$1,024.15
701-392-42	\$1,257.15
701-392-43	\$1,092.40
701-392-44	\$1,092.40
701-392-45	\$1,257.15
701-392-46	\$1,092.40
701-392-47	\$1,257.15
701-392-48	\$1,092.40
701-392-49	\$1,257.15
701-392-50	\$1,024.15
701-393-01	\$1,257.15
701-393-02	\$1,092.40
701-393-03	\$1,024.15
701-393-04	\$1,257.15
701-393-05	\$1,092.40
701-393-06	\$1,257.15
701-393-07	\$1,092.40
701-393-08	\$1,024.15
701-393-09	\$1,024.15
701-393-10	\$1,257.15
701-393-11	\$1,092.40
701-393-12	\$1,257.15
701-393-13	\$1,024.15
701-393-14	\$1,024.15
701-393-15	\$1,257.15
701-393-16	\$1,092.40
701-393-17	\$1,257.15
701-393-18	\$1,092.40
701-393-19	\$1,024.15

Exhibit C

CFD No. 90-2 of the Capistrano Unified School District

<u>Assessor's Parcel Number</u>	<u>FY 2013-2014 Special Tax</u>
701-393-20	\$1,092.40
701-393-21	\$1,257.15
701-393-22	\$1,024.15
701-393-23	\$1,092.40
701-393-24	\$1,257.15
701-393-25	\$1,024.15
701-393-26	\$1,092.40
701-393-27	\$1,257.15
701-393-28	\$1,024.15
701-401-01	\$928.52
701-401-02	\$928.08
701-401-03	\$995.90
701-401-04	\$928.52
701-401-05	\$1,070.67
701-401-06	\$995.90
701-401-07	\$1,070.67
701-401-08	\$928.52
701-401-09	\$995.90
701-401-10	\$928.08
701-401-11	\$928.52
701-401-12	\$1,070.67
701-401-13	\$928.08
701-401-14	\$995.90
701-401-15	\$995.90
701-401-16	\$995.90
701-401-17	\$928.08
701-401-18	\$928.52
701-401-19	\$995.90
701-401-20	\$1,070.67
701-401-21	\$928.52
701-401-22	\$1,070.67
701-401-23	\$995.90
701-401-24	\$1,070.67
701-401-25	\$995.90
701-401-26	\$928.08
701-401-27	\$928.52
701-401-28	\$1,070.67
701-401-29	\$995.90
701-401-30	\$995.90
701-401-31	\$1,070.67
701-401-32	\$928.52
701-401-33	\$928.08
701-401-34	\$995.90
701-401-35	\$928.08
701-401-36	\$928.52
701-401-37	\$1,070.67
701-401-38	\$995.90
701-401-39	\$928.52

Exhibit C

CFD No. 90-2 of the Capistrano Unified School District

<u>Assessor's Parcel Number</u>	<u>FY 2013-2014 Special Tax</u>
701-401-40	\$995.90
701-401-41	\$1,070.67
701-401-42	\$928.52
701-411-01	\$928.52
701-411-02	\$995.90
701-411-03	\$1,070.67
701-411-04	\$928.52
701-411-05	\$995.90
701-411-06	\$928.08
701-411-07	\$995.90
701-411-08	\$1,070.67
701-411-09	\$928.52
701-411-10	\$928.08
701-411-11	\$995.90
701-411-12	\$1,070.67
701-411-13	\$928.52
701-411-14	\$1,070.67
701-411-15	\$995.90
701-411-16	\$985.03
701-411-17	\$928.52
701-411-18	\$928.08
701-411-19	\$995.90
701-411-20	\$1,070.67
701-411-21	\$928.52
701-411-22	\$928.08
701-411-23	\$1,070.67
701-411-24	\$928.52
701-411-25	\$928.52
701-411-26	\$928.08
701-411-27	\$1,070.67
701-411-28	\$995.90
701-411-29	\$928.52
701-411-30	\$1,070.67
701-411-31	\$995.90
701-411-32	\$928.52
701-411-33	\$928.08
701-411-34	\$928.52
701-411-35	\$995.90
701-411-36	\$1,070.67
701-411-37	\$928.08
701-411-38	\$928.52
701-411-39	\$995.90
701-411-40	\$928.52
701-411-41	\$1,070.67
701-411-42	\$995.90
701-411-43	\$1,070.67
701-411-44	\$928.52
701-411-45	\$928.08

Exhibit C

CFD No. 90-2 of the Capistrano Unified School District

<u>Assessor's Parcel Number</u>	<u>FY 2013-2014 Special Tax</u>
701-411-46	\$995.90
701-411-47	\$928.52
701-411-48	\$1,070.67
701-411-49	\$995.90
708-011-01	\$2,276.52
708-011-02	\$1,950.93
708-011-03	\$1,945.72
708-011-04	\$2,110.47
708-011-05	\$1,950.93
708-011-06	\$2,249.57
708-011-07	\$2,040.05
708-011-08	\$2,206.10
708-011-09	\$2,110.47
708-011-10	\$2,179.15
708-011-11	\$1,950.93
708-011-12	\$2,110.47
708-011-13	\$1,950.93
708-011-14	\$2,040.05
708-011-15	\$1,950.93
708-011-16	\$2,276.52
708-011-17	\$1,950.93
708-011-18	\$2,110.47
708-011-19	\$1,945.72
708-011-20	\$2,040.05
708-011-21	\$1,950.93
708-011-22	\$1,950.93
708-011-23	\$2,110.47
708-021-01	\$1,945.72
708-021-02	\$2,206.10
708-021-03	\$2,110.47
708-021-04	\$2,179.15
708-021-05	\$1,945.72
708-021-06	\$2,276.52
708-021-07	\$1,950.93
708-021-08	\$2,040.05
708-021-09	\$1,945.72
708-021-10	\$2,249.57
708-021-11	\$1,950.93
708-021-12	\$1,945.72
708-021-13	\$1,950.93
708-021-14	\$2,110.47
708-021-15	\$1,945.72
708-021-16	\$2,110.47
708-021-17	\$2,110.47
708-021-18	\$1,950.93
708-021-19	\$1,950.93
708-033-01	\$1,508.41
708-033-02	\$1,531.45

Exhibit C

CFD No. 90-2 of the Capistrano Unified School District

<u>Assessor's Parcel Number</u>	<u>FY 2013-2014 Special Tax</u>
708-033-03	\$1,502.76
708-033-04	\$1,248.89
708-033-05	\$1,531.45
708-033-06	\$1,508.41
708-033-07	\$1,394.52
708-033-08	\$1,531.45
708-033-09	\$1,508.41
708-033-10	\$1,248.89
708-033-11	\$1,394.52
708-033-12	\$1,508.41
708-033-13	\$1,531.45
708-033-14	\$1,394.52
708-033-15	\$1,248.89
708-033-16	\$1,508.41
708-033-17	\$1,531.45
708-033-18	\$1,508.41
708-033-19	\$1,394.52
708-033-20	\$1,248.89
708-033-21	\$1,508.41
708-033-22	\$1,531.45
708-033-23	\$1,394.52
708-033-24	\$1,508.41
708-033-25	\$1,531.45
708-033-26	\$1,394.52
708-033-27	\$1,508.41
708-033-28	\$1,248.89
708-033-29	\$1,508.41
708-033-30	\$1,248.89
708-033-31	\$1,502.76
708-033-32	\$1,531.45
708-033-33	\$1,394.52
708-033-34	\$1,508.41
708-033-35	\$1,248.89
708-033-36	\$1,531.45
708-033-37	\$1,394.52
708-033-38	\$1,508.41
708-033-39	\$1,502.76
708-033-40	\$1,248.89
708-033-41	\$1,248.89
708-033-42	\$1,508.41
708-033-43	\$1,502.76
708-033-44	\$1,248.89
708-033-45	\$1,508.41
708-033-46	\$1,248.89
708-033-47	\$1,531.45
708-033-48	\$1,502.76
708-033-49	\$1,508.41
708-033-50	\$1,531.45

Exhibit C

CFD No. 90-2 of the Capistrano Unified School District

<u>Assessor's Parcel Number</u>	<u>FY 2013-2014 Special Tax</u>
708-033-51	\$1,508.41
708-034-01	\$1,259.33
708-034-02	\$1,419.30
708-034-03	\$1,230.64
708-034-04	\$1,344.53
708-034-05	\$1,419.30
708-034-06	\$1,167.60
708-034-07	\$1,419.30
708-034-08	\$1,344.53
708-034-09	\$1,167.60
708-034-10	\$1,419.30
708-034-11	\$1,344.53
708-034-12	\$1,167.60
708-034-13	\$1,419.30
708-034-14	\$1,259.33
708-034-15	\$1,419.30
708-034-16	\$1,344.53
708-034-17	\$1,350.18
708-034-18	\$1,167.60
708-034-19	\$1,350.18
708-034-20	\$1,259.33
708-034-21	\$1,167.60
708-034-22	\$1,350.18
708-034-23	\$1,344.53
708-034-24	\$1,419.30
708-034-25	\$1,259.33
708-034-26	\$1,419.30
708-034-27	\$1,419.30
708-034-28	\$1,167.60
708-034-29	\$1,344.53
708-034-30	\$1,350.18
708-034-31	\$1,259.33
708-034-32	\$1,350.18
708-034-33	\$1,350.18
708-034-34	\$1,167.60
708-034-35	\$1,350.18
708-034-36	\$1,350.18
708-034-37	\$1,344.53
708-034-38	\$1,167.60
708-034-39	\$1,167.60
708-034-40	\$1,259.33
708-034-41	\$1,419.30
708-034-42	\$1,259.33
708-034-43	\$1,419.30
708-034-44	\$1,344.53
708-034-45	\$1,350.18
708-034-46	\$1,230.64
708-034-47	\$1,167.60

Exhibit C

CFD No. 90-2 of the Capistrano Unified School District

<u>Assessor's Parcel Number</u>	<u>FY 2013-2014 Special Tax</u>
708-034-48	\$1,259.33
708-034-49	\$1,230.64
708-034-50	\$1,167.60
708-034-51	\$1,259.33
708-034-52	\$1,167.60
708-034-53	\$1,259.33
708-034-54	\$1,419.30
708-034-55	\$1,344.53
708-034-56	\$1,230.64
708-034-57	\$1,167.60
708-035-01	\$1,508.41
708-035-02	\$1,531.45
708-035-03	\$1,394.52
708-035-04	\$1,508.41
708-035-05	\$1,531.45
708-035-06	\$1,508.41
708-035-07	\$1,394.52
708-035-08	\$1,508.41
708-035-09	\$1,531.45
708-035-10	\$1,248.89
708-035-11	\$1,394.52
708-035-12	\$1,508.41
708-035-13	\$1,531.45
708-035-14	\$1,248.89
708-035-15	\$1,521.88
708-035-16	\$1,338.88
708-035-17	\$1,502.76
708-035-18	\$1,632.73
708-035-19	\$1,508.41
708-035-20	\$1,257.59
708-035-21	\$1,499.72
708-035-22	\$1,521.88
708-035-23	\$1,394.52
708-035-24	\$1,521.88
708-035-25	\$1,508.41
708-035-26	\$1,508.41
708-035-27	\$1,531.45
708-035-28	\$1,394.52
708-035-29	\$1,531.45
708-035-30	\$1,394.52
708-035-31	\$1,248.89
708-035-32	\$1,508.41
708-035-33	\$1,531.45
708-035-34	\$1,394.52
708-035-35	\$1,248.89
708-035-36	\$1,531.45
708-035-37	\$1,508.41
708-035-38	\$1,394.52

Exhibit C

CFD No. 90-2 of the Capistrano Unified School District

<u>Assessor's Parcel Number</u>	<u>FY 2013-2014 Special Tax</u>
708-035-39	\$1,248.89
708-035-40	\$1,531.45
708-035-41	\$1,508.41
708-035-42	\$1,531.45
708-035-43	\$1,508.41
708-035-44	\$1,531.45
708-035-45	\$1,394.52
708-035-46	\$1,508.41
708-035-47	\$1,394.52
708-035-48	\$1,531.45
708-035-49	\$1,508.41
708-035-50	\$1,248.89
708-035-51	\$1,508.41
708-035-52	\$1,248.89
708-035-53	\$1,394.52
708-035-54	\$1,248.89
708-035-55	\$1,394.52
708-035-56	\$1,508.41
708-035-57	\$1,531.45
708-035-58	\$1,394.52
708-052-01	\$1,499.72
708-052-02	\$1,707.50
708-052-03	\$1,601.00
708-052-04	\$1,764.45
708-052-05	\$1,816.18
708-052-06	\$1,601.00
708-052-07	\$1,499.72
708-052-08	\$1,707.50
708-052-09	\$1,601.00
708-052-10	\$1,652.73
708-052-11	\$1,601.00
708-052-12	\$1,635.34
708-052-13	\$1,499.72
708-052-14	\$1,635.34
708-052-15	\$1,601.00
708-052-16	\$1,707.50
708-052-17	\$1,601.00
708-052-18	\$1,707.50
708-052-19	\$1,707.50
708-052-20	\$1,601.00
708-052-21	\$1,707.50
708-052-22	\$1,652.73
708-052-23	\$1,601.00
708-052-24	\$1,707.50
708-052-25	\$1,652.73
708-052-26	\$1,601.00
708-052-27	\$1,635.34
708-052-28	\$1,652.73

Exhibit C

CFD No. 90-2 of the Capistrano Unified School District

<u>Assessor's Parcel Number</u>	<u>FY 2013-2014 Special Tax</u>
708-052-29	\$1,635.34
708-052-32	\$1,635.34
708-052-33	\$1,707.50
708-052-34	\$1,601.00
708-052-35	\$1,652.73
708-052-38	\$1,707.50
708-052-39	\$1,652.73
708-052-40	\$1,601.00
708-052-43	\$1,652.73
708-052-44	\$1,601.00
708-052-45	\$1,652.73
708-052-46	\$1,707.50
708-052-47	\$1,601.00
708-052-48	\$1,652.73
708-052-49	\$1,635.34
708-052-50	\$1,601.00
708-052-51	\$1,652.73
708-052-52	\$1,635.34
708-052-53	\$1,601.00
708-052-54	\$1,652.73
708-052-55	\$1,707.50
708-052-56	\$1,635.34
708-052-61	\$1,707.50
708-052-62	\$1,499.72
708-052-63	\$1,601.00
708-052-64	\$1,707.50
708-052-65	\$1,652.73
708-052-66	\$1,601.00
708-052-67	\$1,707.50
708-052-68	\$1,499.72
708-052-69	\$1,635.34
708-052-70	\$1,652.73
708-052-71	\$1,601.00
708-052-72	\$1,707.50
708-052-73	\$1,499.72
708-052-74	\$1,635.34
708-052-75	\$1,601.00
708-052-76	\$1,707.50
708-052-77	\$1,601.00
708-052-78	\$1,678.81
708-052-79	\$1,756.19
708-052-80	\$1,635.34
708-052-81	\$1,601.00
708-052-82	\$1,711.41
708-052-83	\$1,678.81
708-052-84	\$1,707.50
708-062-01	\$1,720.54
708-062-02	\$1,734.45

Exhibit C

CFD No. 90-2 of the Capistrano Unified School District

<u>Assessor's Parcel Number</u>	<u>FY 2013-2014 Special Tax</u>
708-062-03	\$1,630.99
708-062-04	\$1,720.54
708-062-05	\$1,734.45
708-062-06	\$1,630.99
708-062-07	\$1,720.54
708-062-08	\$1,734.45
708-062-09	\$1,720.54
708-062-10	\$1,630.99
708-062-11	\$1,720.54
708-062-12	\$1,734.45
708-062-13	\$1,630.99
708-062-14	\$1,734.45
708-062-15	\$1,720.54
708-062-16	\$1,720.54
708-062-17	\$1,734.45
708-062-18	\$1,734.45
708-062-19	\$1,630.99
708-063-01	\$1,720.54
708-063-02	\$1,734.45
708-063-03	\$1,619.26
708-063-04	\$1,734.45
708-063-05	\$1,720.54
708-063-06	\$1,734.45
708-063-07	\$1,619.26
708-063-08	\$1,734.45
708-063-09	\$1,720.54
708-063-10	\$1,734.45
708-063-11	\$1,720.54
708-063-12	\$1,720.54
708-063-13	\$1,630.99
708-063-14	\$1,734.45
708-063-15	\$1,630.99
708-063-16	\$1,720.54
708-063-17	\$1,734.45
708-063-18	\$1,720.54
708-063-19	\$1,734.45
708-063-20	\$1,630.99
708-063-21	\$1,734.45
708-063-22	\$1,720.54
708-063-23	\$1,734.45
708-063-24	\$1,630.99
708-063-25	\$1,720.54
708-063-26	\$1,734.45
708-063-27	\$1,619.26
708-063-28	\$1,720.54
708-063-29	\$1,734.45
708-063-30	\$1,619.26
708-063-31	\$1,720.54

Exhibit C

CFD No. 90-2 of the Capistrano Unified School District

<u>Assessor's Parcel Number</u>	<u>FY 2013-2014 Special Tax</u>
708-063-32	\$1,734.45
708-063-33	\$1,720.54
708-063-34	\$1,734.45
708-063-35	\$1,720.54
708-063-36	\$1,734.45
708-063-37	\$1,734.45
708-063-38	\$1,720.54
708-063-39	\$1,619.26
708-063-40	\$1,734.45
708-063-41	\$1,720.54
708-063-42	\$1,720.54
708-063-43	\$1,630.99
708-063-44	\$1,734.45
708-063-45	\$1,720.54
708-063-46	\$1,720.54
708-063-47	\$1,630.99
708-063-48	\$1,734.45
708-063-49	\$1,630.99
708-063-50	\$1,720.54
708-063-51	\$1,734.45
708-063-52	\$1,630.99
708-063-53	\$1,734.45
708-072-01	\$1,017.63
708-072-02	\$1,009.81
708-072-03	\$1,074.14
708-072-04	\$1,065.02
708-072-05	\$1,009.81
708-072-06	\$1,065.02
708-072-07	\$1,074.14
708-072-08	\$1,017.63
708-072-09	\$1,009.81
708-072-10	\$1,074.14
708-072-11	\$1,065.02
708-072-12	\$1,017.63
708-072-13	\$1,074.14
708-072-14	\$1,065.02
708-072-15	\$1,074.14
708-072-16	\$1,009.81
708-072-17	\$1,017.63
708-072-18	\$1,074.14
708-072-19	\$1,065.02
708-072-20	\$1,009.81
708-072-21	\$1,065.02
708-072-22	\$1,017.63
708-072-23	\$1,074.14
708-072-24	\$1,009.81
708-072-25	\$1,074.14
708-072-26	\$1,017.63

Exhibit C

CFD No. 90-2 of the Capistrano Unified School District

<u>Assessor's Parcel Number</u>	<u>FY 2013-2014 Special Tax</u>
708-072-27	\$1,009.81
708-072-28	\$1,074.14
708-072-29	\$1,065.02
708-072-30	\$1,017.63
708-072-31	\$1,009.81
708-072-32	\$1,017.63
708-072-33	\$1,065.02
708-072-34	\$1,074.14
708-072-35	\$1,017.63
708-072-36	\$1,074.14
708-072-37	\$1,065.02
708-072-38	\$1,009.81
708-072-39	\$1,074.14
708-072-40	\$1,065.02
708-072-41	\$1,074.14
708-072-42	\$1,017.63
708-072-43	\$1,074.14
708-072-44	\$1,065.02
708-072-45	\$1,009.81
708-072-46	\$1,017.63
708-072-47	\$1,074.14
708-072-48	\$1,065.02
708-072-49	\$1,065.02
708-072-50	\$1,009.81
708-072-51	\$1,074.14
708-072-52	\$1,017.63
708-072-53	\$1,065.02
708-072-54	\$1,074.14
708-072-55	\$1,009.81
708-072-56	\$1,065.02
708-072-57	\$1,017.63
708-073-01	\$1,065.02
708-073-02	\$1,074.14
708-073-03	\$1,009.81
708-073-04	\$1,065.02
708-073-05	\$1,074.14
708-073-06	\$1,009.81
708-073-07	\$1,017.63
708-073-08	\$1,161.08
708-073-09	\$1,017.63
708-073-10	\$1,065.02
708-073-11	\$1,161.08
708-073-12	\$1,009.81
708-073-13	\$1,017.63
708-073-14	\$1,074.14
708-073-15	\$1,065.02
708-073-16	\$1,017.63
708-073-17	\$1,074.14

Exhibit C

CFD No. 90-2 of the Capistrano Unified School District

<u>Assessor's Parcel Number</u>	<u>FY 2013-2014 Special Tax</u>
708-073-18	\$1,009.81
708-073-19	\$1,065.02
708-073-20	\$1,074.14
708-073-21	\$1,009.81
708-073-22	\$1,074.14
708-073-23	\$1,009.81
708-073-24	\$1,074.14
708-073-25	\$1,017.63
708-073-26	\$1,065.02
708-073-27	\$1,074.14
708-073-28	\$1,065.02
708-073-29	\$1,017.63
708-073-30	\$1,065.02
708-073-31	\$1,074.14
708-073-32	\$1,017.63
708-073-33	\$1,074.14
708-073-34	\$1,009.81
708-073-35	\$1,065.02
708-073-36	\$1,009.81
708-073-37	\$1,017.63
708-073-38	\$1,074.14
708-073-39	\$1,065.02
708-073-40	\$1,017.63
708-073-41	\$1,009.81
708-073-42	\$1,074.14
708-073-43	\$1,065.02
708-073-44	\$1,009.81
708-073-45	\$1,017.63
708-073-46	\$1,074.14
708-073-47	\$1,065.02
708-082-01	\$1,289.32
708-082-02	\$1,224.12
708-082-03	\$1,252.81
708-082-04	\$1,289.32
708-082-05	\$1,252.81
708-082-06	\$1,134.57
708-082-07	\$1,252.81
708-082-08	\$1,289.32
708-082-09	\$1,134.57
708-082-10	\$1,184.12
708-082-11	\$1,134.57
708-082-12	\$1,252.81
708-082-13	\$1,134.57
708-082-14	\$1,252.81
708-082-15	\$1,184.12
708-082-16	\$1,252.81
708-082-17	\$1,134.57
708-082-18	\$1,252.81

Exhibit C

CFD No. 90-2 of the Capistrano Unified School District

<u>Assessor's Parcel Number</u>	<u>FY 2013-2014 Special Tax</u>
708-082-19	\$1,134.57
708-082-20	\$1,252.81
708-082-21	\$1,184.12
708-082-22	\$1,134.57
708-082-23	\$1,184.12
708-082-24	\$1,252.81
708-082-25	\$1,184.56
708-082-26	\$1,252.81
708-082-27	\$1,134.57
708-082-28	\$1,252.81
708-083-01	\$1,252.81
708-083-02	\$1,184.12
708-083-03	\$1,134.57
708-083-04	\$1,184.12
708-083-05	\$1,252.81
708-083-06	\$1,184.12
708-083-07	\$1,252.81
708-083-08	\$1,184.12
708-083-09	\$1,134.57
708-083-10	\$1,184.12
708-083-11	\$1,134.57
708-083-12	\$1,184.12
708-083-13	\$1,134.57
708-083-14	\$1,252.81
708-083-15	\$1,134.57
708-083-16	\$1,252.81
708-083-17	\$1,184.12
708-083-18	\$1,134.57
708-083-19	\$1,184.12
708-083-20	\$1,252.81
708-083-21	\$1,184.12
708-083-22	\$1,252.81
708-083-23	\$1,134.57
708-083-24	\$1,252.81
708-083-25	\$1,184.12
708-083-26	\$1,252.81
708-083-27	\$1,134.57
708-083-28	\$1,252.81
708-083-29	\$1,134.57
708-083-30	\$1,184.12
708-083-31	\$1,134.57
708-083-32	\$1,184.12
708-083-33	\$1,134.57
708-083-34	\$1,184.12
708-083-35	\$1,252.81
708-083-36	\$1,308.01
708-083-37	\$1,289.32
708-083-38	\$1,134.57

Exhibit C

CFD No. 90-2 of the Capistrano Unified School District

<u>Assessor's Parcel Number</u>	<u>FY 2013-2014 Special Tax</u>
708-083-39	\$1,252.81
708-083-40	\$1,289.32
708-083-41	\$1,288.89
708-083-42	\$1,224.12
708-083-43	\$1,252.81
708-083-44	\$1,289.32
708-083-45	\$1,224.12
708-083-46	\$1,252.81
708-083-47	\$1,289.32
708-092-01	\$1,506.24
708-092-02	\$1,397.13
708-092-03	\$1,324.97
708-092-04	\$1,459.72
708-092-05	\$1,506.24
708-092-06	\$1,274.98
708-092-07	\$1,490.15
708-092-08	\$1,431.03
708-092-09	\$1,324.97
708-092-10	\$1,468.85
708-092-11	\$1,587.52
708-092-12	\$1,654.47
708-092-13	\$1,635.78
708-092-14	\$1,603.61
708-092-15	\$1,506.24
708-092-16	\$1,490.15
708-092-17	\$1,324.97
708-092-18	\$1,506.24
708-092-19	\$1,459.72
708-092-20	\$1,397.13
708-092-21	\$1,324.97
708-092-22	\$1,397.13
708-092-23	\$1,506.24
708-092-24	\$1,469.72
708-092-25	\$1,506.24
708-092-26	\$1,459.72
708-092-27	\$1,506.24
708-092-28	\$1,397.13
708-092-29	\$1,490.15
708-092-30	\$1,513.63
708-092-31	\$1,397.13
708-092-32	\$1,506.24
708-092-33	\$1,397.13
708-092-34	\$1,324.97
708-092-35	\$1,459.72
708-092-36	\$1,324.97
708-092-37	\$1,397.13
708-092-38	\$1,469.72
708-092-39	\$1,324.97

Exhibit C

CFD No. 90-2 of the Capistrano Unified School District

<u>Assessor's Parcel Number</u>	<u>FY 2013-2014 Special Tax</u>
708-092-40	\$1,397.13
708-092-41	\$1,513.63
708-092-42	\$1,506.24
708-092-43	\$1,469.72
708-092-44	\$1,506.24
708-093-01	\$1,459.72
708-093-02	\$1,324.97
708-093-03	\$1,513.63
708-093-04	\$1,324.97
708-093-05	\$1,397.13
708-093-06	\$1,513.63
708-093-07	\$1,397.13
708-093-08	\$1,324.97
708-093-09	\$1,397.13
708-093-10	\$1,459.72
708-093-11	\$1,324.97
708-093-12	\$1,459.72
708-093-13	\$1,506.24
708-093-14	\$1,324.97
708-093-15	\$1,506.24
708-093-16	\$1,324.97
708-093-17	\$1,469.72
708-093-18	\$1,513.63
708-093-19	\$1,397.13
708-093-20	\$1,506.24
708-093-21	\$1,474.07
708-093-22	\$1,274.98
708-093-23	\$1,324.97
708-093-24	\$1,506.24
708-093-25	\$1,397.13
708-093-26	\$1,459.72
708-093-27	\$1,513.63
708-093-28	\$1,459.72
708-093-29	\$1,397.13
708-093-30	\$1,506.24
708-093-31	\$1,324.97
708-093-32	\$1,397.13
708-093-33	\$1,459.72
708-093-34	\$1,513.63
708-093-35	\$1,431.03
708-093-36	\$1,324.97
708-093-37	\$1,506.24
708-093-38	\$1,490.15
708-093-39	\$1,324.97
708-093-40	\$1,490.15
708-093-41	\$1,513.63
708-093-42	\$1,324.97
708-093-43	\$1,474.94

Exhibit C

CFD No. 90-2 of the Capistrano Unified School District

<u>Assessor's Parcel Number</u>	<u>FY 2013-2014 Special Tax</u>
708-093-44	\$1,506.24
708-093-45	\$1,474.07
708-093-46	\$1,506.24
708-093-47	\$1,417.99
708-093-48	\$1,274.98
708-093-49	\$1,506.24
708-093-50	\$1,474.07
708-093-51	\$1,431.03
708-093-52	\$1,506.24
708-093-53	\$1,274.98
708-093-54	\$1,397.13
708-093-55	\$1,506.24
708-093-56	\$1,324.97
708-093-57	\$1,397.13
708-093-58	\$1,459.72
708-093-59	\$1,324.97
708-093-60	\$1,513.63
708-093-61	\$1,459.72
708-093-62	\$1,397.13
708-093-63	\$1,506.24
708-102-01	\$2,288.26
708-102-02	\$2,203.06
708-102-03	\$2,051.35
708-102-04	\$2,051.35
708-102-05	\$2,288.26
708-102-06	\$2,198.28
708-102-07	\$2,288.26
708-102-08	\$2,205.23
708-102-09	\$2,293.04
708-102-10	\$2,051.35
708-102-11	\$2,203.06
708-102-14	\$2,293.04
708-102-15	\$2,307.39
708-102-16	\$2,183.93
708-103-01	\$2,198.28
708-103-02	\$2,288.26
708-103-03	\$2,051.35
708-103-04	\$2,203.06
708-103-05	\$2,051.35
708-103-06	\$2,287.39
708-103-07	\$2,203.06
708-103-08	\$2,293.04
708-103-09	\$2,203.06
708-103-10	\$2,287.39
708-103-11	\$2,051.35
708-103-12	\$2,198.28
708-103-13	\$2,288.26
708-103-14	\$2,203.06

Exhibit C

CFD No. 90-2 of the Capistrano Unified School District

<u>Assessor's Parcel Number</u>	<u>FY 2013-2014 Special Tax</u>
708-103-15	\$2,051.35
708-103-16	\$2,205.23
708-103-17	\$2,288.26
708-103-18	\$2,288.26
708-103-19	\$2,198.28
708-103-20	\$2,051.35
708-103-21	\$2,293.04
708-103-22	\$2,205.23
708-103-23	\$2,051.35
708-103-24	\$2,563.86
708-103-25	\$2,632.11
708-103-26	\$2,471.27
708-103-27	\$2,203.06
708-103-28	\$2,287.39
708-103-29	\$2,203.06
708-103-30	\$2,293.04
708-104-01	\$2,051.35
708-104-02	\$2,205.23
708-104-12	\$2,203.06
708-104-13	\$2,293.04
708-104-14	\$2,051.35
708-104-15	\$2,198.28
708-104-16	\$2,288.26
708-104-17	\$2,293.04
708-104-18	\$2,477.36
708-104-19	\$2,288.26
708-104-20	\$2,051.35
708-104-21	\$2,471.27
708-104-22	\$2,051.35
708-104-23	\$2,471.27
708-104-24	\$2,288.26
708-104-25	\$2,051.35
708-104-26	\$2,051.35
708-104-33	\$2,203.06
708-104-34	\$2,287.39
708-104-35	\$2,051.35
708-111-01	\$1,121.09
708-111-02	\$999.81
708-111-03	\$1,142.83
708-111-04	\$1,142.83
708-111-05	\$1,121.09
708-111-06	\$906.35
708-111-07	\$1,121.09
708-111-08	\$906.35
708-111-09	\$1,121.09
708-111-10	\$999.81
708-111-11	\$1,121.09
708-111-12	\$1,142.83

Exhibit C

CFD No. 90-2 of the Capistrano Unified School District

<u>Assessor's Parcel Number</u>	<u>FY 2013-2014 Special Tax</u>
708-111-13	\$1,121.09
708-111-14	\$1,142.83
708-111-15	\$906.35
708-111-16	\$1,121.09
708-111-17	\$1,142.83
708-111-18	\$999.81
708-111-19	\$1,121.09
708-111-20	\$1,142.83
708-111-21	\$1,121.09
708-111-22	\$906.35
708-111-23	\$1,121.09
708-111-24	\$999.81
708-111-25	\$906.35
708-111-26	\$1,142.83
708-111-27	\$906.35
708-111-28	\$1,121.09
708-111-29	\$999.81
708-111-30	\$1,142.83
708-111-31	\$1,121.09
708-111-32	\$1,142.83
708-111-33	\$1,121.09
708-111-34	\$906.35
708-111-35	\$1,121.09
708-111-36	\$999.81
708-111-37	\$1,121.09
708-111-38	\$1,121.09
708-111-39	\$906.35
708-111-40	\$1,121.09
708-111-41	\$1,142.83
708-111-42	\$999.81
708-111-43	\$1,121.09
708-111-44	\$1,142.83
708-111-45	\$906.35
708-111-46	\$1,121.09
708-111-47	\$999.81
708-111-48	\$1,121.09
708-111-49	\$1,142.83
708-111-50	\$906.35
708-111-51	\$1,142.83
708-111-52	\$1,121.09
708-111-53	\$1,142.83
708-111-54	\$999.81
708-111-55	\$1,121.09
708-111-56	\$1,142.83
708-111-57	\$1,121.09
708-111-58	\$1,142.83
708-111-59	\$999.81
708-111-60	\$1,142.83

Exhibit C

CFD No. 90-2 of the Capistrano Unified School District

<u>Assessor's Parcel Number</u>	<u>FY 2013-2014 Special Tax</u>
708-111-61	\$1,121.09
708-111-62	\$906.35
708-111-63	\$999.81
708-111-64	\$906.35
708-111-65	\$1,121.09
708-111-66	\$1,142.83
708-111-67	\$1,121.09
708-111-68	\$906.35
708-111-69	\$1,121.09
708-111-70	\$1,142.83
708-111-71	\$906.35
708-111-72	\$906.35
708-111-73	\$1,121.09
708-111-74	\$999.81
708-111-75	\$906.35
708-122-01	\$2,563.86
708-122-02	\$2,632.11
708-122-03	\$2,471.27
708-122-04	\$2,638.63
708-122-05	\$2,471.27
708-122-06	\$2,632.11
708-122-07	\$2,477.36
708-122-08	\$2,563.86
708-122-09	\$2,477.36
708-122-10	\$2,638.63
708-122-11	\$2,471.27
708-122-12	\$2,632.11
708-122-13	\$2,632.11
708-122-14	\$2,477.36
708-122-15	\$2,563.86
708-122-16	\$2,471.27
708-122-17	\$2,638.63
708-122-18	\$2,471.27
708-122-19	\$2,632.11
708-122-20	\$2,563.86
708-122-21	\$2,477.36
708-122-22	\$2,638.63
708-122-23	\$2,563.86
708-122-24	\$2,563.86
708-122-25	\$2,471.27
708-122-26	\$2,638.63
708-122-27	\$2,471.27
708-122-28	\$2,632.11
708-122-29	\$2,638.63
708-122-30	\$2,471.27
708-122-31	\$2,632.11
708-122-32	\$2,471.27
708-122-33	\$2,563.86

Exhibit C

CFD No. 90-2 of the Capistrano Unified School District

<u>Assessor's Parcel Number</u>	<u>FY 2013-2014 Special Tax</u>
708-123-05	\$1,797.92
708-123-06	\$1,912.68
708-123-07	\$1,677.51
708-123-14	\$1,677.51
708-123-15	\$1,912.68
708-123-16	\$1,797.92
708-123-17	\$1,677.51
708-123-18	\$1,912.68
708-123-19	\$1,797.92
708-123-20	\$1,912.68
708-123-21	\$1,677.51
708-123-22	\$1,797.92
708-123-23	\$1,677.51
708-124-11	\$1,806.61
708-124-12	\$1,719.24
708-124-13	\$1,869.21
708-124-14	\$1,806.61
708-124-15	\$1,869.21
708-124-16	\$1,806.61
708-124-17	\$1,869.21
708-124-18	\$1,806.61
708-124-19	\$1,869.21
708-124-20	\$1,719.24
708-124-21	\$1,806.61
708-124-22	\$1,869.21
708-124-23	\$1,719.24
708-124-24	\$1,869.21
708-124-25	\$1,806.61
708-124-26	\$1,869.21
708-124-27	\$1,806.61
708-124-28	\$1,719.24
708-124-29	\$1,806.61
708-124-30	\$1,869.21
708-124-31	\$1,719.24
708-124-32	\$1,806.61
708-124-33	\$1,806.61
708-124-34	\$1,719.24
708-124-35	\$1,869.21
708-124-36	\$1,719.24
708-124-37	\$1,869.21
708-124-38	\$1,806.61
708-124-39	\$1,869.21
708-124-40	\$1,806.61
708-124-41	\$1,719.24
708-124-42	\$1,869.21
708-124-43	\$1,806.61
708-124-44	\$1,719.24
708-124-45	\$1,869.21

Exhibit C

CFD No. 90-2 of the Capistrano Unified School District

<u>Assessor's Parcel Number</u>	<u>FY 2013-2014 Special Tax</u>
708-124-46	\$1,806.61
708-124-47	\$1,869.21
708-124-48	\$1,719.24
708-124-49	\$1,869.21
708-124-50	\$1,806.61
708-124-51	\$1,869.21
708-124-52	\$1,806.61
930-024-20	\$685.96
930-024-21	\$606.41
930-024-22	\$640.75
930-024-23	\$526.42
930-024-24	\$589.45
930-024-25	\$589.45
930-024-26	\$526.42
930-024-27	\$640.75
930-024-28	\$606.41
930-024-29	\$685.96
930-024-30	\$685.96
930-024-31	\$606.41
930-024-32	\$685.96
930-024-33	\$685.96
930-024-34	\$606.41
930-024-35	\$685.96
930-024-36	\$685.96
930-024-37	\$606.41
930-024-38	\$606.41
930-024-39	\$640.75
930-024-40	\$526.42
930-024-41	\$589.45
930-024-42	\$685.96
930-024-43	\$606.41
930-024-44	\$606.41
930-024-45	\$640.75
930-024-46	\$526.42
930-024-47	\$589.45
930-024-48	\$589.45
930-024-49	\$526.42
930-024-50	\$640.75
930-024-51	\$606.41
930-024-52	\$606.41
930-024-53	\$685.96
930-024-54	\$589.45
930-024-55	\$526.42
930-024-56	\$640.75
930-024-57	\$606.41
930-024-58	\$606.41
930-024-59	\$685.96
930-024-60	\$685.96

Exhibit C

CFD No. 90-2 of the Capistrano Unified School District

<u>Assessor's Parcel Number</u>	<u>FY 2013-2014 Special Tax</u>
930-024-61	\$606.41
930-024-62	\$606.41
930-024-63	\$640.75
930-024-64	\$526.42
930-024-65	\$589.45
930-024-66	\$685.96
930-024-67	\$606.41
930-024-68	\$606.41
930-024-69	\$640.75
930-024-70	\$526.42
930-024-71	\$589.45
930-024-72	\$589.45
930-024-73	\$526.42
930-024-74	\$640.75
930-024-75	\$606.41
930-024-76	\$606.41
930-024-77	\$685.96
930-024-78	\$589.45
930-024-79	\$526.42
930-024-80	\$640.75
930-024-81	\$606.41
930-024-82	\$606.41
930-024-83	\$685.96
930-024-84	\$589.45
930-024-85	\$526.42
930-024-86	\$640.75
930-024-87	\$606.41
930-024-88	\$606.41
930-024-89	\$606.41
930-024-90	\$685.96
930-024-91	\$689.00
930-024-92	\$817.67
930-024-93	\$729.86
930-024-94	\$729.86
930-024-95	\$817.67
930-024-96	\$689.00
930-024-97	\$689.00
930-024-98	\$817.67
930-024-99	\$729.86
930-025-00	\$729.86
930-025-01	\$817.67
930-025-02	\$689.00
930-025-03	\$689.00
930-025-04	\$817.67
930-025-05	\$729.86
930-025-06	\$729.86
930-025-07	\$817.67
930-025-08	\$689.00

Exhibit C

CFD No. 90-2 of the Capistrano Unified School District

<u>Assessor's Parcel Number</u>	<u>FY 2013-2014 Special Tax</u>
930-025-09	\$689.00
930-025-10	\$817.67
930-025-11	\$729.86
930-025-12	\$729.86
930-025-13	\$817.67
930-025-14	\$689.00
930-025-15	\$689.00
930-025-16	\$817.67
930-025-17	\$729.86
930-025-18	\$729.86
930-025-19	\$817.67
930-025-20	\$689.00
930-025-21	\$561.63
930-025-22	\$689.00
930-025-23	\$817.67
930-025-24	\$729.86
930-025-25	\$729.86
930-025-26	\$817.67
930-025-27	\$689.00
930-025-28	\$561.63
930-025-29	\$689.00
930-025-30	\$817.67
930-025-31	\$729.86
930-025-32	\$729.86
930-025-33	\$817.67
930-025-34	\$689.00
930-025-35	\$689.00
930-025-36	\$817.67
930-025-37	\$729.86
930-025-38	\$729.86
930-025-39	\$817.67
930-025-40	\$689.00
930-025-41	\$689.00
930-025-42	\$817.67
930-025-43	\$729.86
930-025-44	\$729.86
930-025-45	\$817.67
930-025-46	\$689.00
930-025-47	\$561.63
930-025-48	\$689.00
930-025-49	\$435.13
930-025-50	\$729.86
930-025-51	\$729.86
930-025-52	\$817.67
930-025-53	\$654.22
930-025-54	\$561.63
930-025-55	\$561.63
930-025-56	\$654.22

Exhibit C

CFD No. 90-2 of the Capistrano Unified School District

<u>Assessor's Parcel Number</u>	<u>FY 2013-2014 Special Tax</u>
930-025-57	\$654.22
930-025-58	\$435.13
930-025-59	\$729.86
930-025-60	\$729.86
930-025-61	\$435.13
930-025-62	\$654.22
930-025-63	\$654.22
930-025-64	\$561.63
930-025-65	\$561.63
930-025-66	\$654.22
930-025-67	\$654.22
930-025-68	\$435.13
930-025-69	\$729.86
930-025-70	\$729.86
930-025-71	\$817.67
930-025-72	\$654.22
930-025-73	\$654.22
930-025-74	\$561.63
930-025-85	\$589.45
930-025-86	\$526.42
930-025-87	\$640.75
930-025-88	\$640.75
930-025-89	\$606.41
930-025-90	\$606.41
930-025-91	\$606.41
930-025-92	\$685.96
930-025-93	\$685.96
930-025-94	\$606.41
930-025-95	\$606.41
930-025-96	\$606.41
930-025-97	\$640.75
930-025-98	\$640.75
930-025-99	\$526.42
930-026-00	\$589.45
930-026-01	\$685.96
930-026-02	\$606.41
930-026-03	\$606.41
930-026-04	\$606.41
930-026-05	\$640.75
930-026-06	\$640.75
930-026-07	\$526.42
930-026-08	\$589.45
930-026-09	\$589.45
930-026-10	\$526.42
930-026-11	\$640.75
930-026-12	\$606.41
930-026-13	\$606.41
930-026-14	\$685.96

Exhibit C

CFD No. 90-2 of the Capistrano Unified School District

<u>Assessor's Parcel Number</u>	<u>FY 2013-2014 Special Tax</u>
930-026-15	\$589.45
930-026-16	\$526.42
930-026-17	\$640.75
930-026-18	\$606.41
930-026-19	\$606.41
930-026-20	\$685.96
930-026-21	\$685.96
930-026-22	\$606.41
930-026-23	\$606.41
930-026-24	\$640.75
930-026-25	\$526.42
930-026-26	\$589.45
930-026-27	\$685.96
930-026-28	\$606.41
930-026-29	\$606.41
930-026-30	\$640.75
930-026-31	\$526.42
930-026-32	\$589.45
930-026-33	\$589.45
930-026-34	\$526.42
930-026-35	\$640.75
930-026-36	\$606.41
930-026-37	\$606.41
930-026-38	\$685.96
930-026-39	\$589.45
930-026-40	\$526.42
930-026-41	\$640.75
930-026-42	\$606.41
930-026-43	\$606.41
930-026-44	\$685.96
930-026-45	\$685.96
930-026-46	\$606.41
930-026-47	\$606.41
930-026-48	\$640.75
930-026-49	\$526.42
930-026-50	\$589.45
930-026-51	\$685.96
930-026-52	\$606.41
930-026-53	\$606.41
930-026-54	\$640.75
930-026-55	\$526.42
930-026-56	\$589.45
930-026-57	\$685.96
930-026-58	\$606.41
930-026-59	\$606.41
930-026-60	\$640.75
930-026-61	\$526.42
930-026-62	\$589.45

Exhibit C

CFD No. 90-2 of the Capistrano Unified School District

<u>Assessor's Parcel Number</u>	<u>FY 2013-2014 Special Tax</u>
930-026-63	\$685.96
930-026-64	\$606.41
930-026-65	\$606.41
930-026-66	\$640.75
930-026-67	\$526.42
930-026-68	\$589.45
930-026-69	\$589.45
930-026-70	\$526.42
930-026-71	\$640.75
930-026-72	\$606.41
930-026-73	\$685.96
930-026-74	\$685.96
930-026-75	\$606.41
930-026-76	\$640.75
930-026-77	\$526.42
930-026-78	\$589.45
930-026-79	\$685.96
930-026-80	\$606.41
930-026-81	\$640.75
930-026-82	\$526.42
930-026-83	\$589.45
930-026-84	\$561.63
930-026-85	\$689.00
930-026-86	\$689.00
930-026-87	\$817.67
930-026-88	\$729.86
930-026-89	\$729.86
930-026-90	\$817.67
930-026-91	\$689.00
930-026-92	\$689.00
930-026-93	\$561.63
930-026-94	\$561.63
930-026-95	\$689.00
930-026-96	\$689.00
930-026-97	\$817.67
930-026-98	\$729.86
930-026-99	\$729.86
930-027-00	\$817.67
930-027-01	\$689.00
930-027-02	\$689.00
930-027-03	\$561.63
930-027-04	\$561.63
930-027-05	\$689.00
930-027-06	\$689.00
930-027-07	\$817.67
930-027-08	\$729.86
930-027-09	\$729.86
930-027-10	\$817.67

Exhibit C

CFD No. 90-2 of the Capistrano Unified School District

<u>Assessor's Parcel Number</u>	<u>FY 2013-2014 Special Tax</u>
930-027-11	\$689.00
930-027-12	\$689.00
930-027-13	\$561.63
930-027-14	\$689.00
930-027-15	\$817.67
930-027-16	\$729.86
930-027-17	\$729.86
930-027-18	\$817.67
930-027-19	\$689.00
930-027-20	\$689.00
930-027-21	\$817.67
930-027-22	\$729.86
930-027-23	\$729.86
930-027-24	\$817.67
930-027-25	\$689.00
930-027-26	\$689.00
930-027-27	\$817.67
930-027-28	\$729.86
930-027-29	\$729.86
930-027-30	\$817.67
930-027-31	\$689.00
930-079-74	\$150.46
930-079-75	\$137.21
930-079-76	\$137.21
930-079-77	\$137.21
930-079-78	\$137.21
930-079-79	\$143.52
930-079-80	\$172.63
930-079-81	\$159.38
930-079-82	\$144.23
930-079-83	\$144.94
930-079-84	\$118.82
930-079-85	\$175.95
930-079-86	\$184.55
930-079-87	\$131.37
930-079-88	\$131.68
930-079-89	\$131.68
930-079-90	\$131.68
930-079-91	\$176.66
930-079-92	\$159.69
930-079-93	\$146.44
930-079-94	\$146.44
930-079-95	\$146.44
930-079-96	\$146.44
930-079-97	\$146.44
930-079-98	\$150.46
933-041-06	\$765.94
933-041-07	\$543.81

Exhibit C

CFD No. 90-2 of the Capistrano Unified School District

<u>Assessor's Parcel Number</u>	<u>FY 2013-2014 Special Tax</u>
933-041-08	\$749.42
933-041-09	\$765.94
933-041-10	\$543.81
933-041-11	\$749.42
933-041-12	\$765.94
933-041-13	\$543.81
933-041-14	\$749.42
933-041-15	\$765.94
933-041-16	\$543.81
933-041-17	\$749.42
933-041-18	\$765.94
933-041-19	\$543.81
933-041-20	\$749.42
933-041-21	\$765.94
933-041-22	\$543.81
933-041-23	\$749.42
933-041-24	\$765.94
933-041-25	\$543.81
933-041-26	\$749.42
933-041-27	\$765.94
933-041-28	\$543.81
933-041-29	\$749.42
933-041-30	\$749.42
933-041-31	\$543.81
933-041-32	\$765.94
933-041-33	\$765.94
933-041-34	\$543.81
933-041-35	\$749.42
933-041-36	\$765.94
933-041-37	\$543.81
933-041-38	\$749.42
933-041-39	\$765.94
933-041-40	\$543.81
933-041-41	\$749.42
933-041-42	\$765.94
933-041-43	\$543.81
933-041-44	\$749.42
933-041-45	\$749.42
933-041-46	\$543.81
933-041-47	\$765.94
933-041-48	\$749.42
933-041-49	\$543.81
933-041-50	\$765.94
933-041-51	\$749.42
933-041-52	\$543.81
933-041-53	\$765.94
933-041-54	\$749.42
933-041-55	\$543.81

Exhibit C

CFD No. 90-2 of the Capistrano Unified School District

<u>Assessor's Parcel Number</u>	<u>FY 2013-2014 Special Tax</u>
933-041-56	\$765.94
933-041-57	\$749.42
933-041-58	\$543.81
933-041-59	\$765.94
933-041-60	\$749.42
933-041-61	\$543.81
933-041-62	\$765.94
933-041-63	\$749.42
933-041-64	\$543.81
933-041-65	\$765.94
933-041-66	\$749.42
933-041-67	\$543.81
933-041-68	\$765.94
933-041-69	\$749.42
933-041-70	\$543.81
933-041-71	\$765.94
933-041-72	\$749.42
933-041-73	\$543.81
933-041-74	\$765.94
933-041-75	\$749.42
933-041-76	\$543.81
933-041-77	\$765.94
933-041-78	\$749.42
933-041-79	\$543.81
933-041-80	\$765.94
933-041-81	\$749.42
933-041-82	\$543.81
933-041-83	\$765.94
933-041-84	\$765.94
933-041-85	\$543.81
933-041-86	\$749.42
933-041-87	\$765.94
933-041-88	\$543.81
933-041-89	\$749.42
933-041-90	\$765.94
933-041-91	\$543.81
933-041-92	\$749.42
933-041-93	\$765.94
933-041-94	\$543.81
933-041-95	\$749.42
933-041-96	\$765.94
933-041-97	\$543.81
933-041-98	\$749.42
933-041-99	\$765.94
933-042-00	\$543.81
933-042-01	\$749.42
933-042-02	\$765.94
933-042-03	\$543.81

Exhibit C

CFD No. 90-2 of the Capistrano Unified School District

<u>Assessor's Parcel Number</u>	<u>FY 2013-2014 Special Tax</u>
933-042-04	\$749.42
933-042-05	\$749.42
933-042-06	\$543.81
933-042-07	\$765.94
933-042-08	\$765.94
933-042-09	\$543.81
933-042-10	\$749.42
933-042-11	\$765.94
933-042-12	\$543.81
933-042-13	\$749.42
933-042-14	\$765.94
933-042-15	\$543.81
933-042-16	\$749.42
933-042-17	\$765.94
933-042-18	\$543.81
933-042-19	\$749.42
933-042-20	\$765.94
933-042-21	\$543.81
933-042-22	\$749.42
933-042-23	\$765.94
933-042-24	\$543.81
933-042-25	\$749.42
933-042-26	\$765.94
933-042-27	\$543.81
933-042-28	\$749.42
933-042-29	\$765.94
933-042-30	\$543.81
933-042-31	\$749.42
933-042-32	\$765.94
933-042-33	\$543.81
933-042-34	\$749.42
933-042-35	\$765.94
933-042-36	\$543.81
933-042-37	\$749.42
933-042-38	\$765.94
933-042-39	\$543.81
933-042-40	\$749.42
933-042-41	\$765.94
933-042-42	\$543.81
933-042-43	\$749.42
933-042-44	\$765.94
933-042-45	\$543.81
933-042-46	\$749.42
933-042-47	\$765.94
933-042-48	\$543.81
933-042-49	\$749.42
933-731-44	\$594.23
933-731-45	\$706.39

Exhibit C

CFD No. 90-2 of the Capistrano Unified School District

<u>Assessor's Parcel Number</u>	<u>FY 2013-2014 Special Tax</u>
933-731-46	\$729.43
933-731-47	\$594.23
933-731-48	\$706.39
933-731-49	\$729.43
933-731-50	\$594.23
933-731-51	\$706.39
933-731-52	\$729.43
933-731-53	\$594.23
933-731-54	\$706.39
933-731-55	\$729.43
933-731-56	\$594.23
933-731-57	\$706.39
933-731-58	\$729.43
933-731-59	\$594.23
933-731-60	\$706.39
933-731-61	\$729.43
933-731-62	\$594.23
933-731-63	\$575.98
933-731-64	\$729.43
933-731-65	\$594.23
933-731-66	\$706.39
933-731-67	\$815.50
933-731-68	\$594.23
933-731-69	\$706.39
933-731-70	\$815.50
933-731-71	\$594.23
933-731-72	\$706.39
933-731-73	\$729.43
933-731-74	\$594.23
933-731-75	\$706.39
933-731-76	\$815.50
933-731-77	\$594.23
933-731-78	\$706.39
933-731-79	\$815.50
933-731-80	\$594.23
933-731-81	\$706.39
933-731-82	\$815.50
933-731-83	\$594.23
933-731-84	\$706.39
933-731-85	\$815.50
933-731-86	\$594.23
933-731-87	\$706.39
933-731-88	\$815.50
933-731-89	\$594.23
933-731-90	\$706.39
933-731-91	\$815.50
933-731-92	\$594.23
933-731-93	\$706.39

Exhibit C

CFD No. 90-2 of the Capistrano Unified School District

<u>Assessor's Parcel Number</u>	<u>FY 2013-2014 Special Tax</u>
933-731-94	\$815.50
933-731-95	\$594.23
933-731-96	\$706.39
933-731-97	\$815.50
933-731-98	\$594.23
933-731-99	\$706.39
933-732-00	\$815.50
933-732-01	\$594.23
933-732-02	\$706.39
933-732-03	\$815.50
933-732-04	\$594.23
933-732-05	\$706.39
933-732-06	\$815.50
933-732-07	\$594.23
933-732-08	\$706.39
933-732-09	\$815.50
933-732-10	\$594.23
933-732-11	\$706.39
933-732-12	\$815.50
933-732-13	\$594.23
933-732-14	\$706.39
933-732-15	\$815.50
933-732-16	\$594.23
933-732-17	\$706.39
933-732-18	\$815.50
933-732-19	\$594.23
933-732-20	\$706.39
933-732-21	\$815.50
933-732-22	\$594.23
933-732-23	\$706.39
933-732-24	\$815.50
933-732-25	\$594.23
933-732-26	\$706.39
933-732-27	\$815.50
933-732-28	\$594.23
933-732-29	\$706.39
933-732-30	\$815.50
933-732-31	\$594.23
933-732-32	\$706.39
933-732-33	\$815.50
933-732-34	\$594.23
933-732-35	\$706.39
933-732-36	\$815.50
933-732-37	\$594.23
933-732-38	\$706.39
933-732-39	\$815.50
933-732-40	\$594.23
933-732-41	\$706.39

Exhibit C

CFD No. 90-2 of the Capistrano Unified School District

<u>Assessor's Parcel Number</u>	<u>FY 2013-2014 Special Tax</u>
933-732-42	\$729.43
933-732-43	\$594.23
933-732-44	\$706.39
933-732-45	\$729.43
933-732-46	\$594.23
933-732-47	\$706.39
933-732-48	\$815.50
933-732-54	\$875.49
933-732-55	\$1,034.59
933-732-56	\$1,034.59
933-732-57	\$888.09
933-732-58	\$888.09
933-732-59	\$1,034.59
933-732-60	\$1,034.59
933-732-61	\$888.09
933-732-62	\$888.09
933-732-63	\$1,034.59
933-732-64	\$1,034.59
933-732-65	\$888.09
933-732-66	\$875.49
933-732-67	\$888.09
933-732-68	\$875.49
933-732-69	\$888.09
933-732-70	\$888.09
933-732-71	\$875.49
933-732-72	\$875.49
933-732-73	\$888.09
933-732-74	\$875.49
933-732-75	\$1,034.59
933-732-76	\$1,034.59
933-732-77	\$888.09
933-732-78	\$875.49
933-732-79	\$888.09
933-732-80	\$875.49
933-732-81	\$1,034.59
933-732-82	\$1,034.59
933-732-83	\$888.09
933-732-84	\$888.09
933-732-85	\$1,034.59
933-732-86	\$1,034.59
933-732-87	\$888.09
933-732-88	\$1,034.59
933-732-89	\$1,034.59
933-732-90	\$888.09
933-732-91	\$1,034.59
933-732-92	\$1,034.59
933-732-93	\$888.09
933-732-94	\$888.09

Exhibit C

CFD No. 90-2 of the Capistrano Unified School District

<u>Assessor's Parcel Number</u>	<u>FY 2013-2014 Special Tax</u>
933-732-95	\$1,034.59
933-732-96	\$1,034.59
933-732-97	\$875.49
933-732-98	\$875.49
933-732-99	\$875.49
933-733-00	\$888.09
933-733-01	\$1,034.59
933-733-02	\$1,034.59
933-733-03	\$888.09
933-733-04	\$875.49
933-733-05	\$1,034.59
933-733-06	\$1,034.59
933-733-07	\$888.09
933-733-08	\$1,034.59
933-733-09	\$1,034.59
933-733-10	\$888.09
933-733-11	\$888.09
933-733-12	\$1,034.59
933-733-13	\$1,034.59
933-733-14	\$888.09
933-733-15	\$888.09
933-733-16	\$1,034.59
933-733-17	\$1,034.59
933-733-18	\$888.09
933-733-19	\$888.09
933-733-20	\$1,034.59
933-733-21	\$1,034.59
933-733-22	\$888.09
933-733-23	\$1,034.59
933-733-24	\$1,034.59
933-733-25	\$875.49
933-733-26	\$888.09
933-733-27	\$888.09
933-733-28	\$1,034.59
933-733-29	\$1,034.59
933-733-30	\$875.49
933-733-31	\$1,034.59
933-733-32	\$1,034.59
933-733-33	\$888.09
933-733-34	\$875.49
933-733-35	\$1,034.59
933-733-36	\$1,034.59
933-733-37	\$888.09
933-733-38	\$875.49
933-733-39	\$888.09

Exhibit C

CFD No. 90-2 of the Capistrano Unified School District

<u>Assessor's Parcel Number</u>	<u>FY 2013-2014 Special Tax</u>
Total FY 2013-2014 Special Tax Levy	\$3,951,683.73
Total Number of Parcels Taxed	3,069