

**CAPISTRANO UNIFIED SCHOOL DISTRICT
COMMUNITY FACILITIES DISTRICT
No. 92-1**

August 3, 2015

Public Finance
Public Private Partnerships
Urban Economics

Newport Beach
Riverside
San Francisco
San Jose
Dallas

**ADMINISTRATION REPORT
FISCAL YEAR 2015-2016**

**CAPISTRANO UNIFIED SCHOOL DISTRICT
COMMUNITY FACILITIES DISTRICT No. 92-1**

PREPARED FOR

**CAPISTRANO UNIFIED SCHOOL DISTRICT
33122 Valle Road
San Juan Capistrano, California 92675**

PREPARED BY

**DAVID TAUSSIG & ASSOCIATES, INC.
5000 Birch Street, Suite 6000
Newport Beach, California 92660
(949) 955-1500**

August 3, 2015

Table of Contents

Section	Page
Introduction	1
I. Special Tax Classifications and Development Update	3
Special Tax Classifications	3
Development Update	3
II. Sources and Applications of Funds.....	5
Description of Funds and Accounts	5
Sources and Uses of Funds.....	9
Account Balances.....	10
III. Fiscal Year 2014-2015 Special Tax Levy	11
IV. Fiscal Year 2015-2016 Special Tax Requirement.....	12
V. Method of Apportionment.....	14
Maximum Special Taxes	14
Apportionment of Special Taxes	14

EXHIBITS

- Exhibit A - Boundary Map
- Exhibit B - Summary of Transactions to Fund and Accounts Fiscal Year 2014-2015
- Exhibit C - Special Tax Roll Fiscal Year 2015-2016

INTRODUCTION

This report provides an analysis of the financial and administrative obligations of Community Facilities District No. 92-1 ("CFD No. 92-1") of the Capistrano Unified School District (the "School District") resulting from the sale of the \$8,515,000 Series 1993 Special Tax Bonds (the "1993 Bonds") and the \$12,500,000 Series 1997 Special Tax Bonds (the "1997 Bonds") which were refunded by the \$31,360,000 Series 1998 Special Tax Bonds (the "1998 Bonds") in July 1998. In addition to refunding the 1993 Bonds and 1997 Bonds, a portion of the proceeds of the 1998 Bonds were used to finance additional facilities for CFD No. 92-1. In July 2013, the 1998 Bonds were refunded by the sale of the \$14,430,000 Series 2013 Special Tax Refunding Bonds (the "2013 Bonds").

CFD No. 92-1 is a legally constituted governmental entity established under the Mello-Roos Community Facilities Act of 1982 (the "Act"), as amended. The Act provides an alternative method for the financing of certain public capital facilities and services. Specifically, CFD No. 92-1 is authorized to issue up to \$30,000,000 in bonds and sold \$8,515,000 in 1993, \$12,500,000 in 1997, plus \$8,747,089 of new money in the 1998 Bonds. The proceeds of the 1993 Bonds, 1997 Bonds and the 1998 Bonds were used for the purpose of (i) acquiring, constructing, expanding, or rehabilitating facilities, including school facilities, land and related appurtenances necessary to meet increased demands placed on the School District as a result of the development of the community facilities district and (ii) to finance the installation of a portion of the public roadway improvements being constructed under the Foothill Circulation Phasing Program.

The bonded indebtedness of CFD No. 92-1 is both secured and repaid through the annual levy and collection of special taxes from all property subject to the tax within the community facilities district. In calculating the special tax liability for fiscal year 2015-2016, this report not only examines the financial obligations of the current fiscal year, but also analyzes the amount of new development which has occurred within the boundaries of the community facilities district.

A map showing the property in CFD No. 92-1 is included in Exhibit A.

This report is organized into the following sections:

Section I

Section I provides an update of the development activity occurring within CFD No. 92-1.

Section II

Section II describes the funds and accounts established pursuant to the Fiscal Agent Agreement between CFD No. 92-1 and U.S. Bank National Association in connection with the issuance of the 2013 Bonds (the "Fiscal Agent Agreement"). Section II also examines the financial activity in the funds and accounts established pursuant to the Resolution of Community Facilities District No. 92-1 Authorizing the Issuance of its Series 2013 Special Tax Bonds (the "2013 Resolution"). A year-to-date summary illustrating all disbursements, special tax receipts and interest earnings of the 2013 Bonds is provided.

Section III

Section III analyzes the fiscal year 2014-2015 special tax levy.

Section IV

Section IV determines the financial obligations of CFD No. 92-1 for fiscal year 2015-2016.

Section V

Section V reviews the methodology used to apportion the special tax requirement between Developed Property and Undeveloped Property. A table of the 2015-2016 special taxes for each classification of property is included.

I. SPECIAL TAX CLASSIFICATIONS AND DEVELOPMENT UPDATE

Special Tax Classifications

The methodology employed to calculate and apportion the special tax is contained in a document entitled the Rate and Method of Apportionment of the Special Tax. The Rate and Method of Apportionment defines two categories of property, namely "Developed Property" and "Undeveloped Property." The category of Developed Property is in turn divided into two separate special tax classifications based on the type of use of the structure built thereon. The Developed Property special tax classifications is shown in Table 1 below.

Table 1
Community Facilities District No. 92-1
Developed Property Classifications

Special Tax Class	Designation
Class 1	Residential Property
Class 2	Commercial Property

Developed Property is distinguished from Undeveloped Property by the issuance of a building permit. Specifically, property for which a building permit was issued as of March 1 will be classified as Developed Property in the following fiscal year. For example, all property in CFD No. 92-1 for which building permits were issued as of March 1, 2015, will be classified as Developed Property in fiscal year 2015-2016. Hence, the development research discussed below focuses on the twelve month period ending March 1, 2015.

Development Update

CFD No. 92-1 encompasses approximately 1,003 gross acres of land within the County of Orange, California. The CFD is adjacent to the Santa Margarita Master Planned Community, in the south-easterly portion of the County. The land within the CFD is the site of the Las Flores Planned Community.

Background research was conducted to determine the amount and type of development activity that occurred during the previous fiscal year. Review of the County of Orange's building permit records indicated that as of March 1, 2015, no permits for new residential units had been issued. However, there were nine new permits issued for residential additions totaling 2,112 square feet. Therefore, 1,981 residential units and 6.128 acres of commercial property have had building permits issued in CFD No. 92-1. A total of 0.1741 gross acres in the district remain undeveloped.

Table 2 below lists the aggregate amount of Developed Property by special tax classification.

Table 2
Community Facilities District No. 92-1
Cumulative Developed Property

Special Tax Class	Designation	Number of Units/Acres	Building Square Footage
Class 1	Residential Property	1,981 units	3,609,251 SF
Class 2	Commercial Property	6.128 acres	34,967 SF

II. SOURCES AND APPLICATION OF FUNDS

Description of Funds and Accounts

The Fiscal Agent Agreement established seven funds for CFD No. 92-1. They are the Administrative Expense Fund, Special Tax Fund, Bond Fund, Reserve Fund, Rebate Fund, Costs of Issuance Fund, and Surplus School Facilities Fund. Within the Bond Fund, an Interest Account and a Principal Account were created. All funds and accounts for CFD No. 92-1 are shown in Chart 1.

All special tax receipts are deposited in the Special Tax Fund. Monies in the Special Tax Fund are allocated based on the priority set forth below (see Chart 2):

1. **Administrative Expense Fund** – an amount specified in writing by the School District, up to the Administrative Expense Requirement;
2. **Interest Account of the Bond Fund** - an amount such that the balance in the Interest Account one Business Day prior to each Interest Payment Date shall be equal to the installment of interest due on the 2013 Bonds on said Interest Payment Date. Monies in the Interest Account shall be used for the payment of interest on the 2013 Bonds as the same become due;
3. **Principal Account of the Bond Fund** - an amount up to the amount needed to make the principal payment due on the 2013 Bonds during the current Bond Year;
4. **Reserve Fund** – the amount, if any, necessary to first reinstate the amount available under the Municipal Bond Debt Service Reserve Insurance Policy (the “Reserve Policy”) that has been drawn upon and, second, to replenish the amount on deposit in the Reserve Fund, so that the amount available under the Reserve Policy, when added to the amount on deposit in the Reserve Fund, shall equal the Reserve Requirement;
5. **For payment to the Insurer of the Build America Mutual Assurance Company (“BAM”) Reimbursement Amount** – in accordance with the terms of the Municipal Bond Insurance Policy 2013B0309 (the “Policy”), to the extent not otherwise paid to BAM; and, then for payment or reimbursement of Administrative Costs related to the Policy to BAM and the Policy Costs related to the Reserve Policy;
6. **Administrative Expense Fund** – to the extent there are additional Administrative Expenses, an amount specified in writing by the School District required to bring the balance therein to the amount needed to pay such Administrative Expenses;
7. **Surplus School Facilities Fund** - all money remaining in the Special Tax Fund after the above six disbursements are made will be transferred to the Surplus School Facilities Fund at the end of the Bond Year.

The Reserve Requirement is an amount equal to the lesser of (i) ten percent (10.00%) of the original proceeds of the 2013 Bonds, (ii) maximum annual debt service on the 2013 Bonds, or (iii) one hundred twenty-five percent (125.00%) of the average annual debt service on the 2013 Bonds. The initial Reserve Requirement for the 2013 Bonds is equal to \$1,443,000 and is satisfied by the Reserve Policy.

Monies in the Surplus School Facilities Fund may be used, at the option of the School District: for acquisition and/or construction of School Facilities; to make deposits to the Rebate Fund for the purposes of paying rebatable arbitrage as and when such is due in accordance with the Tax Certificate and the Regulations; or for deposit to the Interest and/or Principal Account of the Bond Fund for payment of principal of or interest on the 2013 Bonds.

Monies held in any of the aforementioned funds and accounts can be invested by the Fiscal Agent at the direction of the School District and in conformance with the limitations set forth in the Fiscal Agent Agreement. Investment interest earnings, if any, will generally be credited to the fund or account for which the investment was made.

The diagram on the following page illustrates the flow of special tax revenues for CFD No. 92-1.

Chart 1
Capistrano Unified School District
Community Facilities District No. 92-1
Series 2013
Funds and Accounts

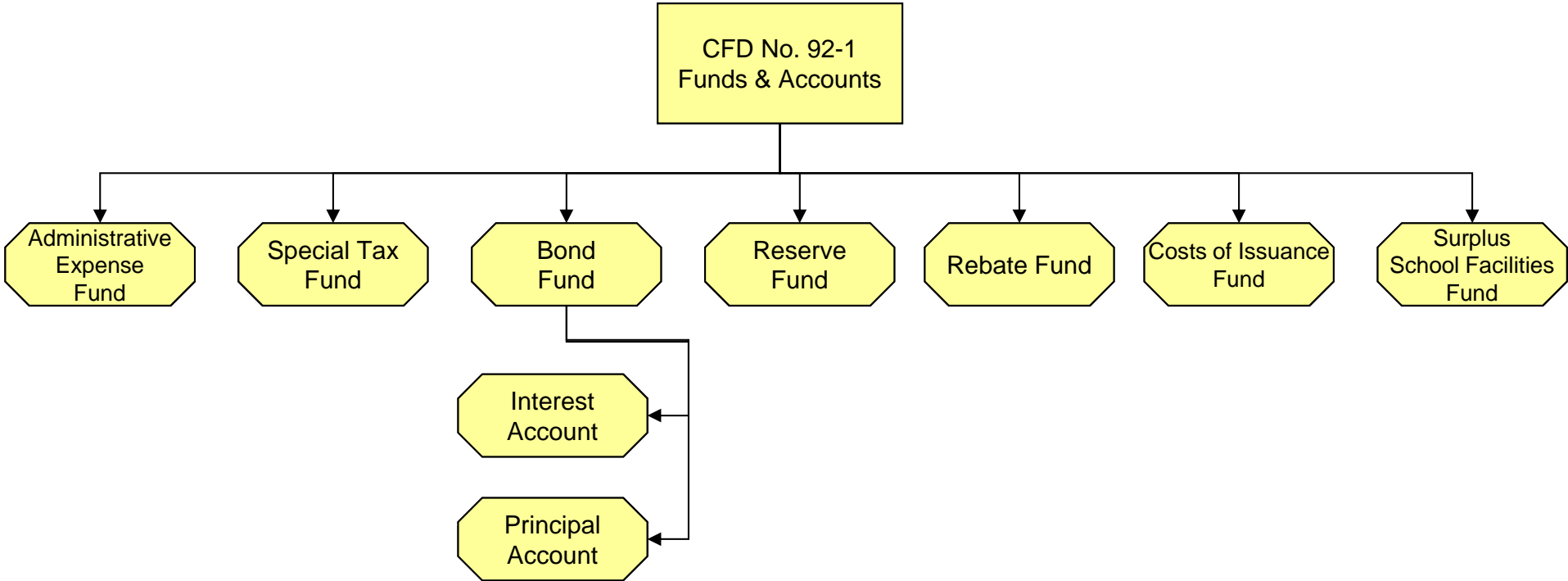
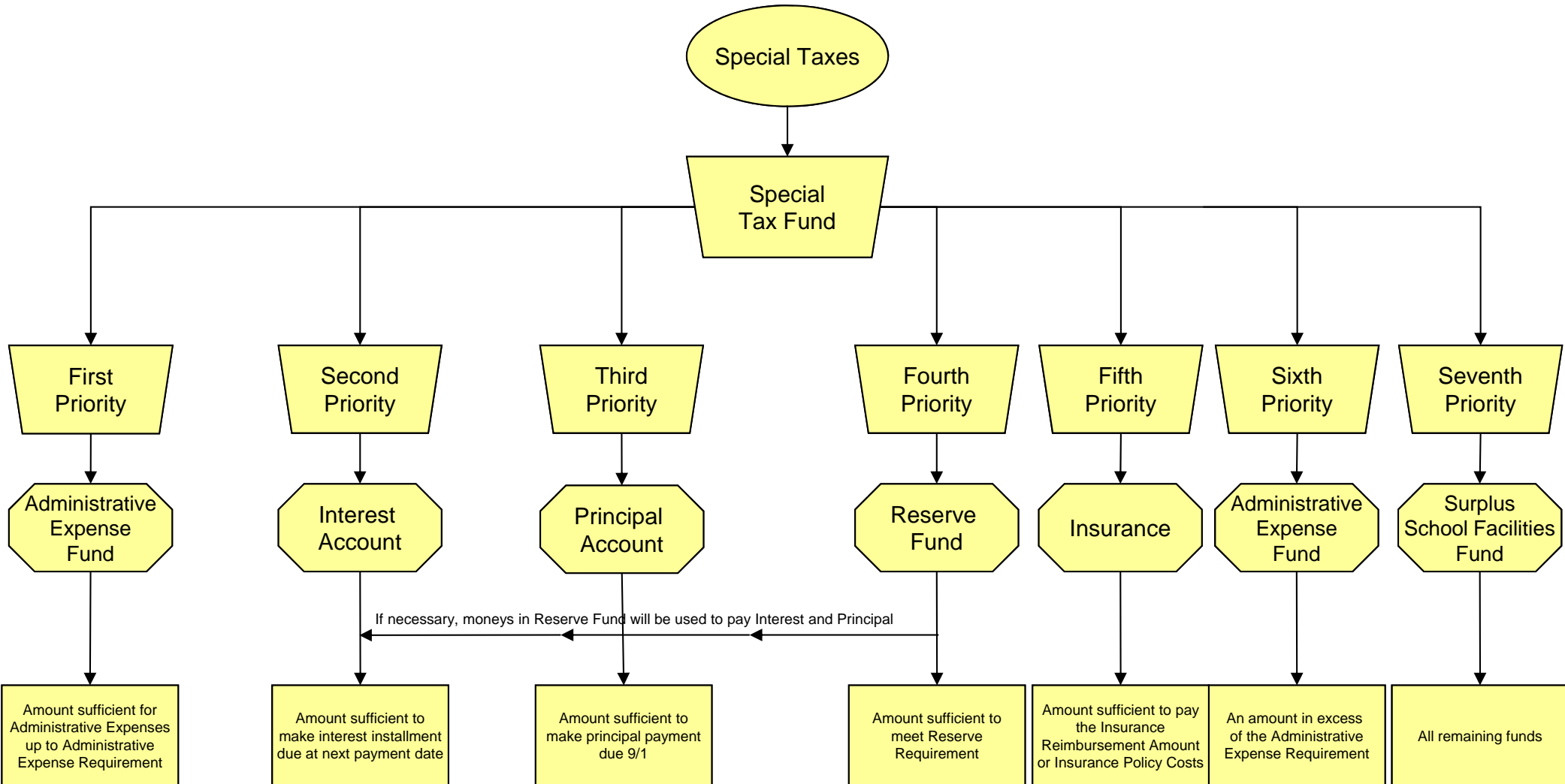


Chart 2
Capistrano Unified School District
Community Facilities District No. 92-1
Series 2013
Funds and Accounts Flow of Funds Diagram



Sources and Uses of Funds

CFD No. 92-1's Series 2013 sources of funds for fiscal year 2014-2015 totaled \$2,679,686. This consisted of \$2,679,159 in special taxes and \$527 in interest earnings not in investment agreements. Interest earnings are shown separately for each account in Table 3 below.

Table 3
Community Facilities District No. 92-1
Table of Interest Earnings

Special Tax Fund	\$83
Bond Fund	\$1
Interest Account	\$0
Principal Account	\$0
Administrative Expense Fund	\$23
Reserve Fund	\$0
Rebate Fund	\$0
Costs of Issuance Fund	\$0
Surplus School Facilities Fund	\$420

Total uses of funds for fiscal year 2014-2015 equaled \$2,317,547. Interest and principal payments on the 2013 Bonds equaled \$462,500 and \$1,410,000, respectively. Payments for the acquisition and/or construction of public facilities equaled \$66,329, and payments for professional services \$55,395. In addition, CFD 92-1 transferred a total of \$323,322 to other CFDs as part of the CFD rebalancing for the fiscal year.

A more detailed analysis of all transactions within the Series 2013 funds and accounts for the 2014-2015 fiscal year is included as Exhibit B.

Account Balances

At the close of fiscal year 2014-2015 the various funds and accounts established for the 2013 Bonds had the following balances:

Table 4
Community Facilities District No. 92-1
Account Balances as of June 30, 2015

Special Tax Fund	\$2,406,038
Bond Fund	\$0
Interest Account	\$0
Principal Account	\$0
Administrative Expense Fund	\$386,369
Reserve Account	\$0
Rebate Fund	\$0
Costs of Issuance Fund	\$0
Surplus School Facilities Fund	\$7,121,322

III. FISCAL YEAR 2014-2015 SPECIAL TAX LEVY

The special tax levy for CFD No. 92-1 for fiscal year 2014-2015 equaled \$2,668,924. As of July 27, 2015, the County had collected \$2,659,577 in special taxes. The remaining \$9,347 in special taxes are delinquent, resulting in a delinquency rate of 0.35 percent.

As a participant in the Teeter Program, the School District will receive an apportionment from the County equal to the delinquent unpaid special taxes for fiscal year 2014-2015. This apportionment is anticipated to occur early in fiscal year 2015-2016.

In addition to the Teeter Program, CFD No. 92-1 has covenanted to commence foreclosure proceedings against (i) parcels with delinquent special taxes in excess of \$25,000 and (ii) all properties with delinquent special taxes if the delinquency rate exceeds five percent. Notwithstanding the foregoing, CFD No. 92-1 may elect to defer foreclosure proceedings on any parcel of Developed Property which is owned by a delinquent property owner whose property is not, in the aggregate, delinquent in the payment of special taxes in an amount in excess of \$25,000, so long as (i) the amount in the Reserve Fund is at least equal to the Reserve Requirement, and (ii) CFD No. 92-1 is not in default in the payment of the principal of or interest on the 2013 Bonds or any Parity Bonds.

Based upon the current level of delinquencies, no foreclosure action is required.

IV. FISCAL YEAR 2015-2016 SPECIAL TAX REQUIREMENT

For fiscal year 2015-2016, the special tax requirement is equal to \$2,669,424 and is calculated as follows:

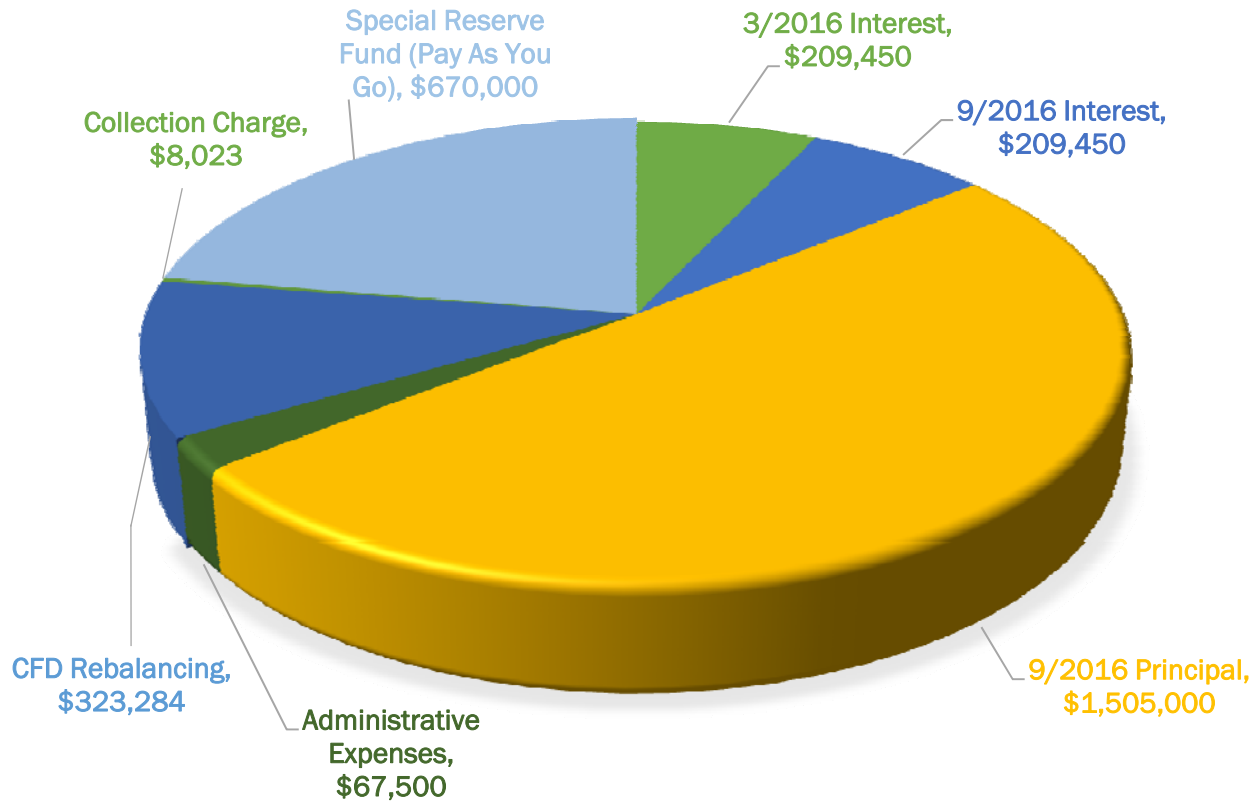
Table 5
Community Facilities District No. 92-1
Fiscal Year 2015-2016 Special Tax Requirement

Fund Balances as of June 30, 2015		\$2,729,322
Special Tax Fund	\$2,406,038	
Bond Fund	\$0	
Special Reserve Funds Available for Rebalancing	\$323,284	
Surplus Monies in the Reserve Fund	\$0	
Remaining Fiscal Year 2014-2015 Sources of Funds		\$37,067
Teeter and Final Paid Apportionment	\$37,067	
Remaining Fiscal Year 2014-2015 Obligations		(\$2,443,105)
Interest Due September 1, 2015	(\$224,200)	
Principal Due September 1, 2015	(\$1,475,000)	
Administrative Expenses	(\$67,500)	
Surplus School Facilities Fund (Pay-As-You-Go)	(\$676,405)	
Fiscal Year 2014-2015 Surplus / (Draw on Reserve Fund)		\$323,284
Fiscal Year 2015-2016 Obligations		(\$2,992,707)
CFD Rebalancing	(\$323,284)	
Interest Due March 1, 2016	(\$209,450)	
Interest Due September 1, 2016	(\$209,450)	
Principal Due September 1, 2016	(\$1,505,000)	
County Collection Charge	(\$8,023)	
Administration Expenses	(\$67,500)	
Surplus School Facilities Fund (Pay-As-You-Go)	(\$670,000)	
Fiscal Year 2015-2016 Special Tax Requirement [1]		(2,669,423)

[1] Pay-As-You-Go of \$550,000 plus \$120,000 for the lost reserve. The rest of the savings as a result of 2013 refunding is used to reduce the levy.

The components of the fiscal year 2015-2016 special tax requirement are shown graphically on the following page.

Capistrano Unified School District
Community Facilities District No. 92-1
Fiscal Year 2015-2016 Gross Special Tax Requirement



Total Fiscal Year 2015-2016 Gross Special Tax Requirement: \$2,992,707

V. METHOD OF APPORTIONMENT

Maximum Special Taxes

The amount of special taxes that CFD No. 92-1 may levy is strictly limited by the maximum special taxes set forth in the Rate and Method of Apportionment. The initial maximum special taxes for each classification of Developed Property, or the "Assigned Special Taxes," are specified in Table I of Section C of the Rate and Method of Apportionment.¹

Apportionment of Special Taxes

The special tax that is apportioned to each parcel is determined through the application of Section D of the Rate and Method of Apportionment. Section D apportions the special tax requirement in four steps, which prioritize the order in which Developed Property and Undeveloped Property are taxed.

The first step states that the special tax shall be levied against each parcel of Developed Property at up to 100 percent of the assigned special tax. If the special taxes raised pursuant to the first step are less than the special tax requirement, then the second step is applied. The second step states that the special tax shall be levied against all parcels of Undeveloped Property at up to 100 percent of the applicable maximum special tax per acre.

The third and fourth steps are designed to accommodate changes in land use and are intended to be used only as a last resort. Since actual land uses have not substantially deviated from the original projections, these steps are not necessary.

Application of the maximum special taxes under the first step generates special tax revenues of \$4,241,231 from Residential Property and \$106,485 from Commercial Property, which is more than sufficient to meet all obligations for CFD No. 92-1 for fiscal year 2015-2016 outlined in Section IV. Therefore, the fiscal year 2015-2016 special tax for each parcel of Developed Property is equal to approximately 61.40 percent of the maximum special tax.

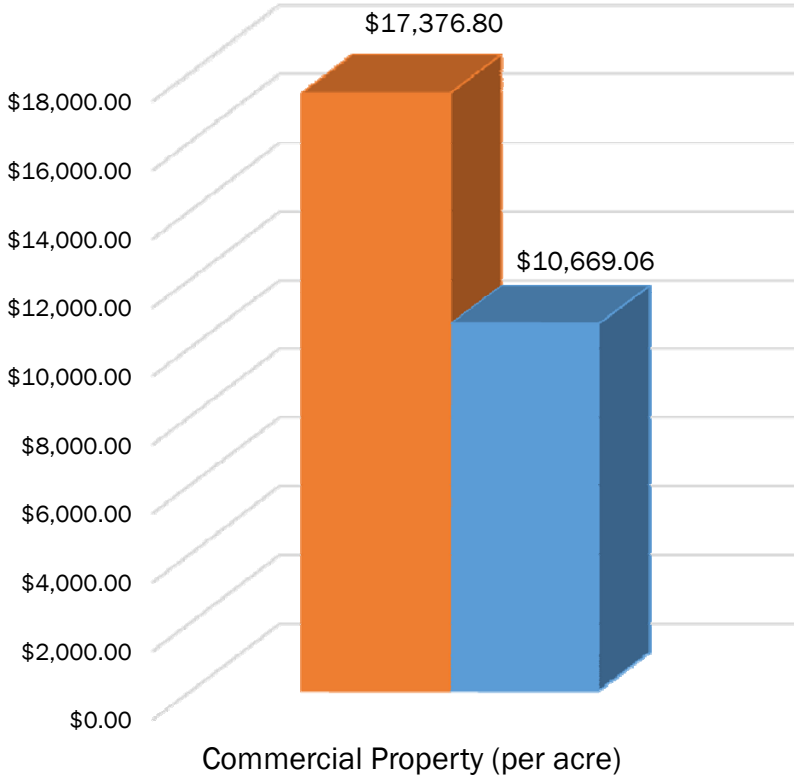
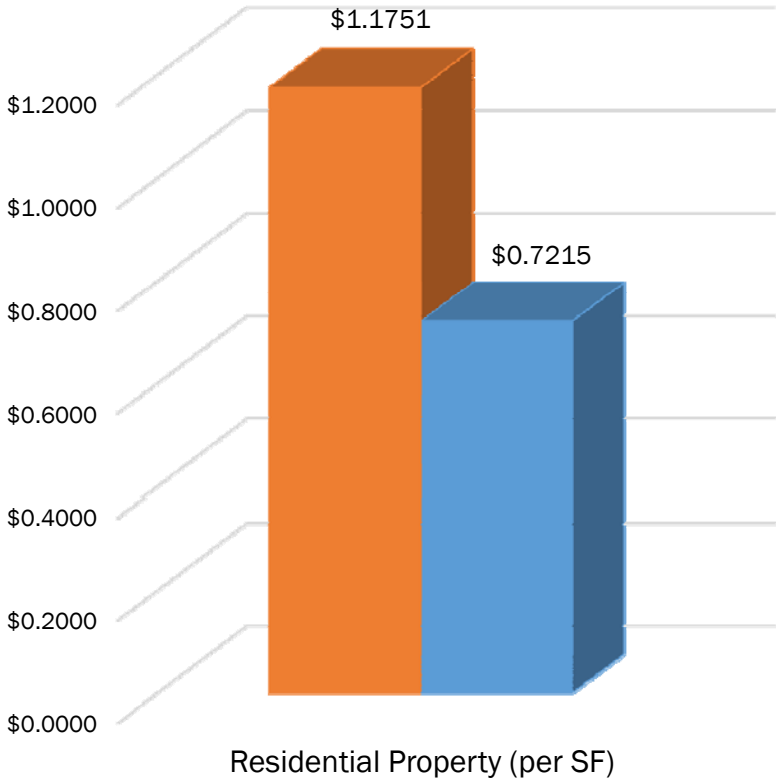
The fiscal year 2015-2016 special taxes are shown for each classification of Developed Property and Undeveloped Property in Table 6 below and graphically on the following pages. The Special Tax Roll which lists the total special tax levy for each parcel is shown in Exhibit C.

¹ Technically, Section C states that the maximum special tax for a parcel of Developed Property is equal to the greater of (i) the "Backup Special Tax" or (ii) the Assigned Special Tax. The Backup Special Tax was established for the contingency of a shortfall in revenues resulting from significant changes in development densities. Since the actual density of development is consistent with original projections, the contingency for which the Backup Special Tax was established does not exist and hence, all discussion of maximum tax rates for Developed Property focuses on the Assigned Special Tax.

Table 6
Community Facilities District No. 92-1
Fiscal Year 2015-2016 Special Taxes
For Developed Property and Undeveloped Property

Special Tax Class	Designation	FY 2015-2016 Maximum Special Tax	FY 2015-2016 Actual Special Tax	Percent Of Maximum
Class 1	Residential Property	\$1.1751 per SF	\$0.7215 per SF	61.40%
Class 2	Commercial Property	\$17,376.80 per SF	\$10,669.05 per SF	61.40%
NA	Undeveloped Acre	\$21,643.72 per acre	\$0.00 per acre	0.00%

**Capistrano Unified School District
Community Facilities District No. 92-1
Fiscal Year 2015-2016 Special Tax Levy**



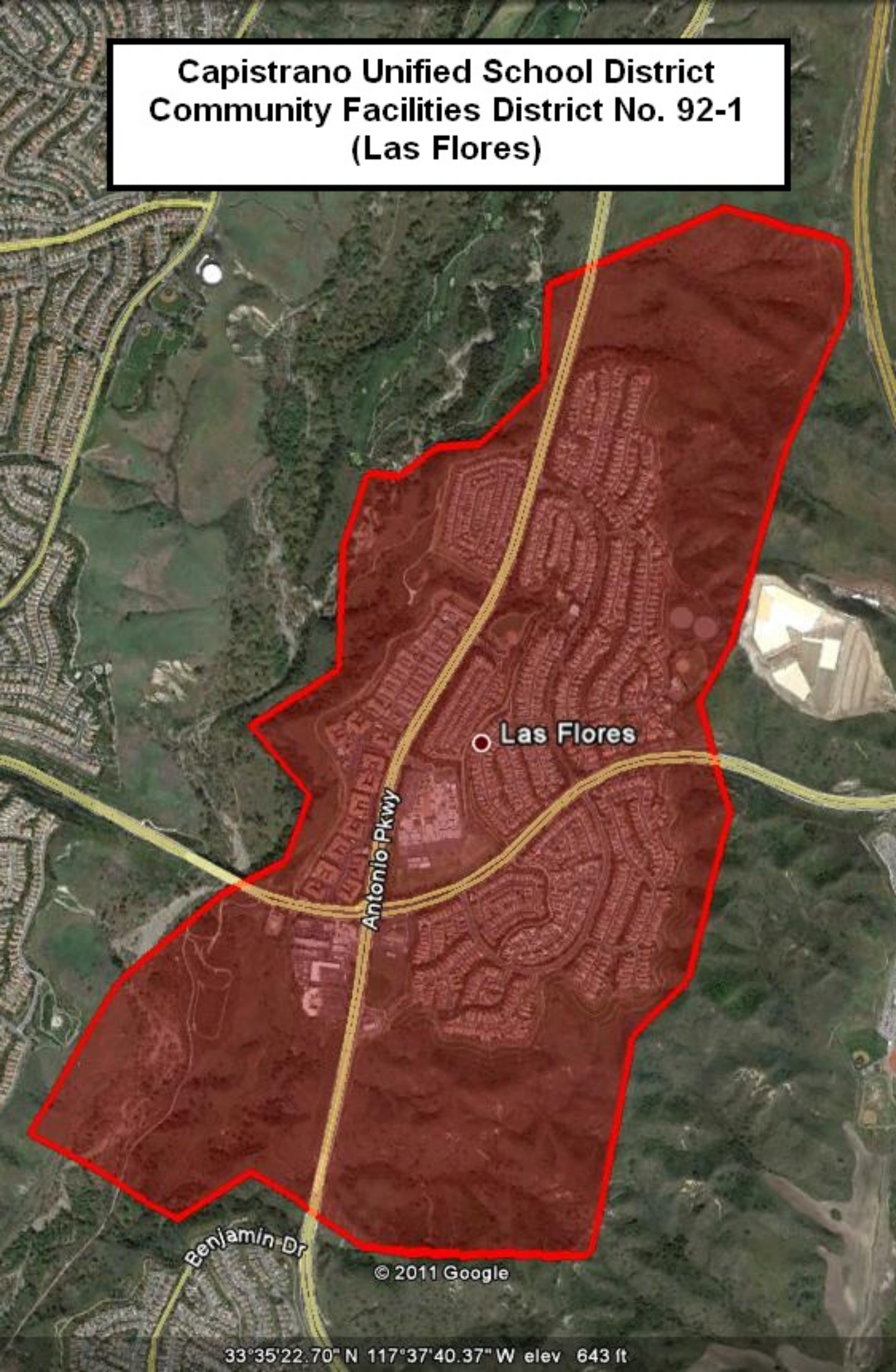
■ Maximum Special Tax
 ■ Actual Special Tax

EXHIBIT A

**CFD No. 92-1 of the
Capistrano Unified School District**

Boundary Map

**Capistrano Unified School District
Community Facilities District No. 92-1
(Las Flores)**



Las Flores

Antonio Pkwy

Benjamin Dr

© 2011 Google

33°35'22.70" N 117°37'40.37" W elev 643 ft

EXHIBIT B

**CFD No. 92-1 of the
Capistrano Unified School District**

**Summary of Transactions to Fund and Accounts
Series 2013
Fiscal Year 2014-2015**

**COMMUNITY FACILITIES DISTRICT NO. 92-1
OF THE CAPISTRANO UNIFIED SCHOOL DISTRICT
SERIES 2013 SPECIAL TAX BONDS
FISCAL YEAR 2014-2015**

	SPECIAL TAX FUND	BOND FUND	RESERVE FUND [1]	ADMIN EXPENSE FUND	REBATE FUND	SURPLUS SCHOOL FACILITIES FUND	COST OF ISSUANCE ACCOUNT	TOTAL
BEGINNING BALANCE	\$2,347,245	\$0	\$0	\$374,242	\$0	\$6,830,102	\$0	\$9,551,590
SOURCES OF FUNDS								
BOND PROCEEDS	\$0	\$0	\$0	\$0	\$0	\$0	\$0	\$0
SPECIAL TAX RECEIPTS	\$2,679,159	\$0	\$0	\$0	\$0	\$0	\$0	\$2,679,159
INVESTMENT AGRMNT. EARNINGS	\$0	\$0	\$0	\$0	\$0	\$0	\$0	\$0
OTHER INVESTMENT EARNINGS	\$83	\$1	\$0	\$23	\$0	\$420	\$0	\$527
MISCELLANEOUS	\$0	\$0	\$0	\$0	\$0	\$0	\$0	\$0
TOTAL SOURCES	\$2,679,242	\$1	\$0	\$23	\$0	\$420	\$0	\$2,679,686
USES OF FUNDS								
INTEREST PAYMENTS	\$0	(\$462,500)	\$0	\$0	\$0	\$0	\$0	(\$462,500)
PRINCIPAL PAYMENTS	\$0	(\$1,410,000)	\$0	\$0	\$0	\$0	\$0	(\$1,410,000)
PUBLIC FACILITIES	\$0	\$0	\$0	\$0	\$0	(\$66,329)	\$0	(\$66,329)
PROFESSIONAL SERVICES	\$0	\$0	\$0	(\$55,395)	\$0	\$0	\$0	(\$55,395)
MISCELLANEOUS	\$0	\$0	\$0	\$0	\$0	(\$323,322)	\$0	(\$323,322)
TOTAL USES	\$0	(\$1,872,500)	\$0	(\$55,395)	\$0	(\$389,651)	\$0	(\$2,317,547)
TRANSFERS	(\$2,620,449)	\$1,872,499	\$0	\$67,500	\$0	\$680,450	\$0	\$0
ENDING BALANCE	\$2,406,038	\$0	\$0	\$386,369	\$0	\$7,121,322	\$0	\$9,913,729

[1] No Cash Reserve. A Debt Service Reserve Insurance Policy issued by BAM equal to the initial Reserve Requirement in the amount of \$1,443,000.00 is held by U.S. Bank National Association pursuant to the Fiscal Agent Agreement.

**COMMUNITY FACILITIES DISTRICT NO. 92-1
OF THE CAPISTRANO UNIFIED SCHOOL DISTRICT
SERIES 2013 SPECIAL TAX BONDS
July 2014**

	SPECIAL TAX FUND	BOND FUND	RESERVE FUND [1]	ADMIN EXPENSE FUND	REBATE FUND	SURPLUS SCHOOL FACILITIES FUND	COST OF ISSUANCE ACCOUNT	TOTAL
BEGINNING BALANCE	\$2,347,245	\$0	\$0	\$374,242	\$0	\$6,830,102	\$0	\$9,551,590
SOURCES OF FUNDS								
BOND PROCEEDS	\$0	\$0	\$0	\$0	\$0	\$0	\$0	\$0
SPECIAL TAX RECEIPTS	\$0	\$0	\$0	\$0	\$0	\$0	\$0	\$0
INVESTMENT AGRMNT. EARNINGS	\$0	\$0	\$0	\$0	\$0	\$0	\$0	\$0
OTHER INVESTMENT EARNINGS	\$10	\$0	\$0	\$2	\$0	\$34	\$0	\$46
MISCELLANEOUS	\$0	\$0	\$0	\$0	\$0	\$0	\$0	\$0
TOTAL SOURCES	\$10	\$0	\$0	\$2	\$0	\$34	\$0	\$46
USES OF FUNDS								
INTEREST PAYMENTS	\$0	\$0	\$0	\$0	\$0	\$0	\$0	\$0
PRINCIPAL PAYMENTS	\$0	\$0	\$0	\$0	\$0	\$0	\$0	\$0
PUBLIC FACILITIES	\$0	\$0	\$0	\$0	\$0	\$0	\$0	\$0
PROFESSIONAL SERVICES	\$0	\$0	\$0	\$0	\$0	\$0	\$0	\$0
MISCELLANEOUS	\$0	\$0	\$0	\$0	\$0	\$0	\$0	\$0
TOTAL USES	\$0	\$0	\$0	\$0	\$0	\$0	\$0	\$0
TRANSFERS	\$0	\$0	\$0	\$0	\$0	\$0	\$0	\$0
ENDING BALANCE	\$2,347,255	\$0	\$0	\$374,244	\$0	\$6,830,136	\$0	\$9,551,636

[1] No Cash Reserve. A Debt Service Reserve Insurance Policy issued by BAM equal to the initial Reserve Requirement in the amount of \$1,443,000.00 is held by U.S. Bank National Association pursuant to the Fiscal Agent Agreement.

**COMMUNITY FACILITIES DISTRICT NO. 92-1
OF THE CAPISTRANO UNIFIED SCHOOL DISTRICT
SERIES 2013 SPECIAL TAX BONDS
August 2014**

	SPECIAL TAX FUND	BOND FUND	RESERVE FUND [1]	ADMIN EXPENSE FUND	REBATE FUND	SURPLUS SCHOOL FACILITIES FUND	COST OF ISSUANCE ACCOUNT	TOTAL
BEGINNING BALANCE	\$2,347,255	\$0	\$0	\$374,244	\$0	\$6,830,136	\$0	\$9,551,636
SOURCES OF FUNDS								
BOND PROCEEDS	\$0	\$0	\$0	\$0	\$0	\$0	\$0	\$0
SPECIAL TAX RECEIPTS	\$48,971	\$0	\$0	\$0	\$0	\$0	\$0	\$48,971
INVESTMENT AGRMNT. EARNINGS	\$0	\$0	\$0	\$0	\$0	\$0	\$0	\$0
OTHER INVESTMENT EARNINGS	\$12	\$0	\$0	\$2	\$0	\$35	\$0	\$49
MISCELLANEOUS	\$0	\$0	\$0	\$0	\$0	\$0	\$0	\$0
TOTAL SOURCES	\$48,983	\$0	\$0	\$2	\$0	\$35	\$0	\$49,020
USES OF FUNDS								
INTEREST PAYMENTS	\$0	\$0	\$0	\$0	\$0	\$0	\$0	\$0
PRINCIPAL PAYMENTS	\$0	\$0	\$0	\$0	\$0	\$0	\$0	\$0
PUBLIC FACILITIES	\$0	\$0	\$0	\$0	\$0	\$0	\$0	\$0
PROFESSIONAL SERVICES	\$0	\$0	\$0	(\$37,542)	\$0	\$0	\$0	(\$37,542)
MISCELLANEOUS	\$0	\$0	\$0	\$0	\$0	(\$323,322)	\$0	(\$323,322)
TOTAL USES	\$0	\$0	\$0	(\$37,542)	\$0	(\$323,322)	\$0	(\$360,864)
TRANSFERS	(\$1,648,300)	\$1,648,300	\$0	\$0	\$0	\$0	\$0	\$0
ENDING BALANCE	\$747,939	\$1,648,300	\$0	\$336,704	\$0	\$6,506,849	\$0	\$9,239,792

[1] No Cash Reserve. A Debt Service Reserve Insurance Policy issued by BAM equal to the initial Reserve Requirement in the amount of \$1,443,000.00 is held by U.S. Bank National Association pursuant to the Fiscal Agent Agreement.

**COMMUNITY FACILITIES DISTRICT NO. 92-1
OF THE CAPISTRANO UNIFIED SCHOOL DISTRICT
SERIES 2013 SPECIAL TAX BONDS
September 2014**

	SPECIAL TAX FUND	BOND FUND	RESERVE FUND [1]	ADMIN EXPENSE FUND	REBATE FUND	SURPLUS SCHOOL FACILITIES FUND	COST OF ISSUANCE ACCOUNT	TOTAL
BEGINNING BALANCE	\$747,939	\$1,648,300	\$0	\$336,704	\$0	\$6,506,849	\$0	\$9,239,792
SOURCES OF FUNDS								
BOND PROCEEDS	\$0	\$0	\$0	\$0	\$0	\$0	\$0	\$0
SPECIAL TAX RECEIPTS	\$0	\$0	\$0	\$0	\$0	\$0	\$0	\$0
INVESTMENT AGRMNT. EARNINGS	\$0	\$0	\$0	\$0	\$0	\$0	\$0	\$0
OTHER INVESTMENT EARNINGS	\$11	\$1	\$0	\$2	\$0	\$34	\$0	\$48
MISCELLANEOUS	\$0	\$0	\$0	\$0	\$0	\$0	\$0	\$0
TOTAL SOURCES	\$11	\$1	\$0	\$2	\$0	\$34	\$0	\$48
USES OF FUNDS								
INTEREST PAYMENTS	\$0	(\$238,300)	\$0	\$0	\$0	\$0	\$0	(\$238,300)
PRINCIPAL PAYMENTS	\$0	(\$1,410,000)	\$0	\$0	\$0	\$0	\$0	(\$1,410,000)
PUBLIC FACILITIES	\$0	\$0	\$0	\$0	\$0	\$0	\$0	\$0
PROFESSIONAL SERVICES	\$0	\$0	\$0	(\$4,417)	\$0	\$0	\$0	(\$4,417)
MISCELLANEOUS	\$0	\$0	\$0	\$0	\$0	\$0	\$0	\$0
TOTAL USES	\$0	(\$1,648,300)	\$0	(\$4,417)	\$0	\$0	\$0	(\$1,652,717)
TRANSFERS	\$0	\$0	\$0	\$0	\$0	\$0	\$0	\$0
ENDING BALANCE	\$747,950	\$1	\$0	\$332,289	\$0	\$6,506,883	\$0	\$7,587,123

[1] No Cash Reserve. A Debt Service Reserve Insurance Policy issued by BAM equal to the initial Reserve Requirement in the amount of \$1,443,000.00 is held by U.S. Bank National Association pursuant to the Fiscal Agent Agreement.

**COMMUNITY FACILITIES DISTRICT NO. 92-1
OF THE CAPISTRANO UNIFIED SCHOOL DISTRICT
SERIES 2013 SPECIAL TAX BONDS
October 2014**

	SPECIAL TAX FUND	BOND FUND	RESERVE FUND [1]	ADMIN EXPENSE FUND	REBATE FUND	SURPLUS SCHOOL FACILITIES FUND	COST OF ISSUANCE ACCOUNT	TOTAL
BEGINNING BALANCE	\$747,950	\$1	\$0	\$332,289	\$0	\$6,506,883	\$0	\$7,587,123
SOURCES OF FUNDS								
BOND PROCEEDS	\$0	\$0	\$0	\$0	\$0	\$0	\$0	\$0
SPECIAL TAX RECEIPTS	\$0	\$0	\$0	\$0	\$0	\$0	\$0	\$0
INVESTMENT AGRMNT. EARNINGS	\$0	\$0	\$0	\$0	\$0	\$0	\$0	\$0
OTHER INVESTMENT EARNINGS	\$4	\$0	\$0	\$2	\$0	\$32	\$0	\$38
MISCELLANEOUS	\$0	\$0	\$0	\$0	\$0	\$0	\$0	\$0
TOTAL SOURCES	\$4	\$0	\$0	\$2	\$0	\$32	\$0	\$38
USES OF FUNDS								
INTEREST PAYMENTS	\$0	\$0	\$0	\$0	\$0	\$0	\$0	\$0
PRINCIPAL PAYMENTS	\$0	\$0	\$0	\$0	\$0	\$0	\$0	\$0
PUBLIC FACILITIES	\$0	\$0	\$0	\$0	\$0	\$0	\$0	\$0
PROFESSIONAL SERVICES	\$0	\$0	\$0	(\$7,473)	\$0	\$0	\$0	(\$7,473)
MISCELLANEOUS	\$0	\$0	\$0	\$0	\$0	\$0	\$0	\$0
TOTAL USES	\$0	\$0	\$0	(\$7,473)	\$0	\$0	\$0	(\$7,473)
TRANSFERS	(\$747,950)	\$0	\$0	\$67,500	\$0	\$680,450	\$0	\$0
ENDING BALANCE	\$4	\$1	\$0	\$392,318	\$0	\$7,187,365	\$0	\$7,579,688

[1] No Cash Reserve. A Debt Service Reserve Insurance Policy issued by BAM equal to the initial Reserve Requirement in the amount of \$1,443,000.00 is held by U.S. Bank National Association pursuant to the Fiscal Agent Agreement.

**COMMUNITY FACILITIES DISTRICT NO. 92-1
OF THE CAPISTRANO UNIFIED SCHOOL DISTRICT
SERIES 2013 SPECIAL TAX BONDS
November 2014**

	SPECIAL TAX FUND	BOND FUND	RESERVE FUND [1]	ADMIN EXPENSE FUND	REBATE FUND	SURPLUS SCHOOL FACILITIES FUND	COST OF ISSUANCE ACCOUNT	TOTAL
BEGINNING BALANCE	\$4	\$1	\$0	\$392,318	\$0	\$7,187,365	\$0	\$7,579,688
SOURCES OF FUNDS								
BOND PROCEEDS	\$0	\$0	\$0	\$0	\$0	\$0	\$0	\$0
SPECIAL TAX RECEIPTS	\$86,752	\$0	\$0	\$0	\$0	\$0	\$0	\$86,752
INVESTMENT AGRMNT. EARNINGS	\$0	\$0	\$0	\$0	\$0	\$0	\$0	\$0
OTHER INVESTMENT EARNINGS	\$2	\$0	\$0	\$2	\$0	\$35	\$0	\$39
MISCELLANEOUS	\$0	\$0	\$0	\$0	\$0	\$0	\$0	\$0
TOTAL SOURCES	\$86,754	\$0	\$0	\$2	\$0	\$35	\$0	\$86,791
USES OF FUNDS								
INTEREST PAYMENTS	\$0	\$0	\$0	\$0	\$0	\$0	\$0	\$0
PRINCIPAL PAYMENTS	\$0	\$0	\$0	\$0	\$0	\$0	\$0	\$0
PUBLIC FACILITIES	\$0	\$0	\$0	\$0	\$0	\$0	\$0	\$0
PROFESSIONAL SERVICES	\$0	\$0	\$0	\$0	\$0	\$0	\$0	\$0
MISCELLANEOUS	\$0	\$0	\$0	\$0	\$0	\$0	\$0	\$0
TOTAL USES	\$0	\$0	\$0	\$0	\$0	\$0	\$0	\$0
TRANSFERS	\$0	\$0	\$0	\$0	\$0	\$0	\$0	\$0
ENDING BALANCE	\$86,758	\$1	\$0	\$392,320	\$0	\$7,187,400	\$0	\$7,666,478

[1] No Cash Reserve. A Debt Service Reserve Insurance Policy issued by BAM equal to the initial Reserve Requirement in the amount of \$1,443,000.00 is held by U.S. Bank National Association pursuant to the Fiscal Agent Agreement.

**COMMUNITY FACILITIES DISTRICT NO. 92-1
OF THE CAPISTRANO UNIFIED SCHOOL DISTRICT
SERIES 2013 SPECIAL TAX BONDS
December 2014**

	SPECIAL TAX FUND	BOND FUND	RESERVE FUND [1]	ADMIN EXPENSE FUND	REBATE FUND	SURPLUS SCHOOL FACILITIES FUND	COST OF ISSUANCE ACCOUNT	TOTAL
BEGINNING BALANCE	\$86,758	\$1	\$0	\$392,320	\$0	\$7,187,400	\$0	\$7,666,478
SOURCES OF FUNDS								
BOND PROCEEDS	\$0	\$0	\$0	\$0	\$0	\$0	\$0	\$0
SPECIAL TAX RECEIPTS	\$1,261,280	\$0	\$0	\$0	\$0	\$0	\$0	\$1,261,280
INVESTMENT AGRMNT. EARNINGS	\$0	\$0	\$0	\$0	\$0	\$0	\$0	\$0
OTHER INVESTMENT EARNINGS	\$0	\$0	\$0	\$2	\$0	\$36	\$0	\$38
MISCELLANEOUS	\$0	\$0	\$0	\$0	\$0	\$0	\$0	\$0
TOTAL SOURCES	\$1,261,280	\$0	\$0	\$2	\$0	\$36	\$0	\$1,261,317
USES OF FUNDS								
INTEREST PAYMENTS	\$0	\$0	\$0	\$0	\$0	\$0	\$0	\$0
PRINCIPAL PAYMENTS	\$0	\$0	\$0	\$0	\$0	\$0	\$0	\$0
PUBLIC FACILITIES	\$0	\$0	\$0	\$0	\$0	\$0	\$0	\$0
PROFESSIONAL SERVICES	\$0	\$0	\$0	(\$756)	\$0	\$0	\$0	(\$756)
MISCELLANEOUS	\$0	\$0	\$0	\$0	\$0	\$0	\$0	\$0
TOTAL USES	\$0	\$0	\$0	(\$756)	\$0	\$0	\$0	(\$756)
TRANSFERS	\$0	\$0	\$0	\$0	\$0	\$0	\$0	\$0
ENDING BALANCE	\$1,348,038	\$1	\$0	\$391,565	\$0	\$7,187,435	\$0	\$8,927,039

[1] No Cash Reserve. A Debt Service Reserve Insurance Policy issued by BAM equal to the initial Reserve Requirement in the amount of \$1,443,000.00 is held by U.S. Bank National Association pursuant to the Fiscal Agent Agreement.

**COMMUNITY FACILITIES DISTRICT NO. 92-1
OF THE CAPISTRANO UNIFIED SCHOOL DISTRICT
SERIES 2013 SPECIAL TAX BONDS
January 2015**

	SPECIAL TAX FUND	BOND FUND	RESERVE FUND [1]	ADMIN EXPENSE FUND	REBATE FUND	SURPLUS SCHOOL FACILITIES FUND	COST OF ISSUANCE ACCOUNT	TOTAL
BEGINNING BALANCE	\$1,348,038	\$1	\$0	\$391,565	\$0	\$7,187,435	\$0	\$8,927,039
SOURCES OF FUNDS								
BOND PROCEEDS	\$0	\$0	\$0	\$0	\$0	\$0	\$0	\$0
SPECIAL TAX RECEIPTS	\$34,139	\$0	\$0	\$0	\$0	\$0	\$0	\$34,139
INVESTMENT AGRMNT. EARNINGS	\$0	\$0	\$0	\$0	\$0	\$0	\$0	\$0
OTHER INVESTMENT EARNINGS	\$3	\$0	\$0	\$2	\$0	\$37	\$0	\$42
MISCELLANEOUS	\$0	\$0	\$0	\$0	\$0	\$0	\$0	\$0
TOTAL SOURCES	\$34,142	\$0	\$0	\$2	\$0	\$37	\$0	\$34,181
USES OF FUNDS								
INTEREST PAYMENTS	\$0	\$0	\$0	\$0	\$0	\$0	\$0	\$0
PRINCIPAL PAYMENTS	\$0	\$0	\$0	\$0	\$0	\$0	\$0	\$0
PUBLIC FACILITIES	\$0	\$0	\$0	\$0	\$0	\$0	\$0	\$0
PROFESSIONAL SERVICES	\$0	\$0	\$0	(\$1,476)	\$0	\$0	\$0	(\$1,476)
MISCELLANEOUS	\$0	\$0	\$0	\$0	\$0	\$0	\$0	\$0
TOTAL USES	\$0	\$0	\$0	(\$1,476)	\$0	\$0	\$0	(\$1,476)
TRANSFERS	\$0	\$0	\$0	\$0	\$0	\$0	\$0	\$0
ENDING BALANCE	\$1,382,180	\$1	\$0	\$390,091	\$0	\$7,187,472	\$0	\$8,959,744

[1] No Cash Reserve. A Debt Service Reserve Insurance Policy issued by BAM equal to the initial Reserve Requirement in the amount of \$1,443,000.00 is held by U.S. Bank National Association pursuant to the Fiscal Agent Agreement.

**COMMUNITY FACILITIES DISTRICT NO. 92-1
OF THE CAPISTRANO UNIFIED SCHOOL DISTRICT
SERIES 2013 SPECIAL TAX BONDS
February 2015**

	SPECIAL TAX FUND	BOND FUND	RESERVE FUND [1]	ADMIN EXPENSE FUND	REBATE FUND	SURPLUS SCHOOL FACILITIES FUND	COST OF ISSUANCE ACCOUNT	TOTAL
BEGINNING BALANCE	\$1,382,180	\$1	\$0	\$390,091	\$0	\$7,187,472	\$0	\$8,959,744
SOURCES OF FUNDS								
BOND PROCEEDS	\$0	\$0	\$0	\$0	\$0	\$0	\$0	\$0
SPECIAL TAX RECEIPTS	\$0	\$0	\$0	\$0	\$0	\$0	\$0	\$0
INVESTMENT AGRMNT. EARNINGS	\$0	\$0	\$0	\$0	\$0	\$0	\$0	\$0
OTHER INVESTMENT EARNINGS	\$7	\$0	\$0	\$2	\$0	\$37	\$0	\$46
MISCELLANEOUS	\$0	\$0	\$0	\$0	\$0	\$0	\$0	\$0
TOTAL SOURCES	\$7	\$0	\$0	\$2	\$0	\$37	\$0	\$46
USES OF FUNDS								
INTEREST PAYMENTS	\$0	\$0	\$0	\$0	\$0	\$0	\$0	\$0
PRINCIPAL PAYMENTS	\$0	\$0	\$0	\$0	\$0	\$0	\$0	\$0
PUBLIC FACILITIES	\$0	\$0	\$0	\$0	\$0	\$0	\$0	\$0
PROFESSIONAL SERVICES	\$0	\$0	\$0	\$0	\$0	\$0	\$0	\$0
MISCELLANEOUS	\$0	\$0	\$0	\$0	\$0	\$0	\$0	\$0
TOTAL USES	\$0	\$0	\$0	\$0	\$0	\$0	\$0	\$0
TRANSFERS	(\$224,199)	\$224,199	\$0	\$0	\$0	\$0	\$0	\$0
ENDING BALANCE	\$1,157,988	\$224,200	\$0	\$390,093	\$0	\$7,187,509	\$0	\$8,959,789

[1] No Cash Reserve. A Debt Service Reserve Insurance Policy issued by BAM equal to the initial Reserve Requirement in the amount of \$1,443,000.00 is held by U.S. Bank National Association pursuant to the Fiscal Agent Agreement.

**COMMUNITY FACILITIES DISTRICT NO. 92-1
OF THE CAPISTRANO UNIFIED SCHOOL DISTRICT
SERIES 2013 SPECIAL TAX BONDS
March 2015**

	SPECIAL TAX FUND	BOND FUND	RESERVE FUND [1]	ADMIN EXPENSE FUND	REBATE FUND	SURPLUS SCHOOL FACILITIES FUND	COST OF ISSUANCE ACCOUNT	TOTAL
BEGINNING BALANCE	\$1,157,988	\$224,200	\$0	\$390,093	\$0	\$7,187,509	\$0	\$8,959,789
SOURCES OF FUNDS								
BOND PROCEEDS	\$0	\$0	\$0	\$0	\$0	\$0	\$0	\$0
SPECIAL TAX RECEIPTS	\$118,103	\$0	\$0	\$0	\$0	\$0	\$0	\$118,103
INVESTMENT AGRMNT. EARNINGS	\$0	\$0	\$0	\$0	\$0	\$0	\$0	\$0
OTHER INVESTMENT EARNINGS	\$6	\$0	\$0	\$2	\$0	\$33	\$0	\$41
MISCELLANEOUS	\$0	\$0	\$0	\$0	\$0	\$0	\$0	\$0
TOTAL SOURCES	\$118,110	\$0	\$0	\$2	\$0	\$33	\$0	\$118,145
USES OF FUNDS								
INTEREST PAYMENTS	\$0	(\$224,200)	\$0	\$0	\$0	\$0	\$0	(\$224,200)
PRINCIPAL PAYMENTS	\$0	\$0	\$0	\$0	\$0	\$0	\$0	\$0
PUBLIC FACILITIES	\$0	\$0	\$0	\$0	\$0	\$0	\$0	\$0
PROFESSIONAL SERVICES	\$0	\$0	\$0	\$0	\$0	\$0	\$0	\$0
MISCELLANEOUS	\$0	\$0	\$0	\$0	\$0	\$0	\$0	\$0
TOTAL USES	\$0	(\$224,200)	\$0	\$0	\$0	\$0	\$0	(\$224,200)
TRANSFERS	\$0	\$0	\$0	\$0	\$0	\$0	\$0	\$0
ENDING BALANCE	\$1,276,098	\$0	\$0	\$390,095	\$0	\$7,187,542	\$0	\$8,853,734

[1] No Cash Reserve. A Debt Service Reserve Insurance Policy issued by BAM equal to the initial Reserve Requirement in the amount of \$1,443,000.00 is held by U.S. Bank National Association pursuant to the Fiscal Agent Agreement.

**COMMUNITY FACILITIES DISTRICT NO. 92-1
OF THE CAPISTRANO UNIFIED SCHOOL DISTRICT
SERIES 2013 SPECIAL TAX BONDS
April 2015**

	SPECIAL TAX FUND	BOND FUND	RESERVE FUND [1]	ADMIN EXPENSE FUND	REBATE FUND	SURPLUS SCHOOL FACILITIES FUND	COST OF ISSUANCE ACCOUNT	TOTAL
BEGINNING BALANCE	\$1,276,098	\$0	\$0	\$390,095	\$0	\$7,187,542	\$0	\$8,853,734
SOURCES OF FUNDS								
BOND PROCEEDS	\$0	\$0	\$0	\$0	\$0	\$0	\$0	\$0
SPECIAL TAX RECEIPTS	\$1,111,284	\$0	\$0	\$0	\$0	\$0	\$0	\$1,111,284
INVESTMENT AGRMNT. EARNINGS	\$0	\$0	\$0	\$0	\$0	\$0	\$0	\$0
OTHER INVESTMENT EARNINGS	\$6	\$0	\$0	\$2	\$0	\$37	\$0	\$45
MISCELLANEOUS	\$0	\$0	\$0	\$0	\$0	\$0	\$0	\$0
TOTAL SOURCES	\$1,111,290	\$0	\$0	\$2	\$0	\$37	\$0	\$1,111,329
USES OF FUNDS								
INTEREST PAYMENTS	\$0	\$0	\$0	\$0	\$0	\$0	\$0	\$0
PRINCIPAL PAYMENTS	\$0	\$0	\$0	\$0	\$0	\$0	\$0	\$0
PUBLIC FACILITIES	\$0	\$0	\$0	\$0	\$0	(\$58,825)	\$0	(\$58,825)
PROFESSIONAL SERVICES	\$0	\$0	\$0	\$0	\$0	\$0	\$0	\$0
MISCELLANEOUS	\$0	\$0	\$0	\$0	\$0	\$0	\$0	\$0
TOTAL USES	\$0	\$0	\$0	\$0	\$0	(\$58,825)	\$0	(\$58,825)
TRANSFERS	\$0	\$0	\$0	\$0	\$0	\$0	\$0	\$0
ENDING BALANCE	\$2,387,388	\$0	\$0	\$390,097	\$0	\$7,128,753	\$0	\$9,906,238

[1] No Cash Reserve. A Debt Service Reserve Insurance Policy issued by BAM equal to the initial Reserve Requirement in the amount of \$1,443,000.00 is held by U.S. Bank National Association pursuant to the Fiscal Agent Agreement.

**COMMUNITY FACILITIES DISTRICT NO. 92-1
OF THE CAPISTRANO UNIFIED SCHOOL DISTRICT
SERIES 2013 SPECIAL TAX BONDS
May 2015**

	SPECIAL TAX FUND	BOND FUND	RESERVE FUND [1]	ADMIN EXPENSE FUND	REBATE FUND	SURPLUS SCHOOL FACILITIES FUND	COST OF ISSUANCE ACCOUNT	TOTAL
BEGINNING BALANCE	\$2,387,388	\$0	\$0	\$390,097	\$0	\$7,128,753	\$0	\$9,906,238
SOURCES OF FUNDS								
BOND PROCEEDS	\$0	\$0	\$0	\$0	\$0	\$0	\$0	\$0
SPECIAL TAX RECEIPTS	\$18,222	\$0	\$0	\$0	\$0	\$0	\$0	\$18,222
INVESTMENT AGRMNT. EARNINGS	\$0	\$0	\$0	\$0	\$0	\$0	\$0	\$0
OTHER INVESTMENT EARNINGS	\$8	\$0	\$0	\$2	\$0	\$36	\$0	\$45
MISCELLANEOUS	\$0	\$0	\$0	\$0	\$0	\$0	\$0	\$0
TOTAL SOURCES	\$18,230	\$0	\$0	\$2	\$0	\$36	\$0	\$18,267
USES OF FUNDS								
INTEREST PAYMENTS	\$0	\$0	\$0	\$0	\$0	\$0	\$0	\$0
PRINCIPAL PAYMENTS	\$0	\$0	\$0	\$0	\$0	\$0	\$0	\$0
PUBLIC FACILITIES	\$0	\$0	\$0	\$0	\$0	(\$7,504)	\$0	(\$7,504)
PROFESSIONAL SERVICES	\$0	\$0	\$0	(\$3,731)	\$0	\$0	\$0	(\$3,731)
MISCELLANEOUS	\$0	\$0	\$0	\$0	\$0	\$0	\$0	\$0
TOTAL USES	\$0	\$0	\$0	(\$3,731)	\$0	(\$7,504)	\$0	(\$11,235)
TRANSFERS	\$0	\$0	\$0	\$0	\$0	\$0	\$0	\$0
ENDING BALANCE	\$2,405,617	\$0	\$0	\$386,367	\$0	\$7,121,285	\$0	\$9,913,270

[1] No Cash Reserve. A Debt Service Reserve Insurance Policy issued by BAM equal to the initial Reserve Requirement in the amount of \$1,443,000.00 is held by U.S. Bank National Association pursuant to the Fiscal Agent Agreement.

**COMMUNITY FACILITIES DISTRICT NO. 92-1
OF THE CAPISTRANO UNIFIED SCHOOL DISTRICT
SERIES 2013 SPECIAL TAX BONDS
June 2015**

	SPECIAL TAX FUND	BOND FUND	RESERVE FUND [1]	ADMIN EXPENSE FUND	REBATE FUND	SURPLUS SCHOOL FACILITIES FUND	COST OF ISSUANCE ACCOUNT	TOTAL
BEGINNING BALANCE	\$2,405,617	\$0	\$0	\$386,367	\$0	\$7,121,285	\$0	\$9,913,270
SOURCES OF FUNDS								
BOND PROCEEDS	\$0	\$0	\$0	\$0	\$0	\$0	\$0	\$0
SPECIAL TAX RECEIPTS	\$409	\$0	\$0	\$0	\$0	\$0	\$0	\$409
INVESTMENT AGRMNT. EARNINGS	\$0	\$0	\$0	\$0	\$0	\$0	\$0	\$0
OTHER INVESTMENT EARNINGS	\$12	\$0	\$0	\$2	\$0	\$36	\$0	\$51
MISCELLANEOUS	\$0	\$0	\$0	\$0	\$0	\$0	\$0	\$0
TOTAL SOURCES	\$421	\$0	\$0	\$2	\$0	\$36	\$0	\$459
USES OF FUNDS								
INTEREST PAYMENTS	\$0	\$0	\$0	\$0	\$0	\$0	\$0	\$0
PRINCIPAL PAYMENTS	\$0	\$0	\$0	\$0	\$0	\$0	\$0	\$0
PUBLIC FACILITIES	\$0	\$0	\$0	\$0	\$0	\$0	\$0	\$0
PROFESSIONAL SERVICES	\$0	\$0	\$0	\$0	\$0	\$0	\$0	\$0
MISCELLANEOUS	\$0	\$0	\$0	\$0	\$0	\$0	\$0	\$0
TOTAL USES	\$0	\$0	\$0	\$0	\$0	\$0	\$0	\$0
TRANSFERS	\$0	\$0	\$0	\$0	\$0	\$0	\$0	\$0
ENDING BALANCE	\$2,406,038	\$0	\$0	\$386,369	\$0	\$7,121,322	\$0	\$9,913,729

[1] No Cash Reserve. A Debt Service Reserve Insurance Policy issued by BAM equal to the initial Reserve Requirement in the amount of \$1,443,000.00 is held by U.S. Bank National Association pursuant to the Fiscal Agent Agreement.

EXHIBIT C

**CFD No. 92-1 of the
Capistrano Unified School District**

**Special Tax Roll
Fiscal Year 2015-2016**

Exhibit C

CFD No. 92-1 of the Capistrano Unified School District

<u>Assessor's Parcel Number</u>	<u>FY 2015-2016 Special Tax</u>
780-041-04	\$8,407.21
780-042-01	\$2,080.06
780-042-02	\$1,891.03
780-042-03	\$2,075.73
780-042-04	\$1,891.03
780-042-05	\$1,891.03
780-042-06	\$1,716.43
780-042-07	\$1,891.03
780-042-08	\$1,891.03
780-042-09	\$1,849.18
780-042-10	\$1,891.03
780-042-11	\$1,849.18
780-042-12	\$2,075.73
780-042-13	\$1,716.43
780-042-14	\$2,075.73
780-042-15	\$1,891.03
780-042-16	\$2,198.38
780-042-17	\$1,891.03
780-042-18	\$1,716.43
780-042-19	\$2,075.73
780-042-20	\$1,716.43
780-042-21	\$2,093.05
780-042-22	\$2,075.73
780-042-23	\$1,867.94
780-042-24	\$1,891.03
780-042-25	\$2,075.73
780-042-26	\$2,339.80
780-042-27	\$1,891.03
780-042-28	\$1,891.03
780-042-29	\$1,891.03
780-042-30	\$2,075.73
780-042-31	\$1,716.43
780-042-32	\$1,716.43
780-042-33	\$2,075.73
780-042-34	\$2,146.44
780-042-35	\$1,865.05
780-042-36	\$1,847.74
780-042-37	\$2,075.73
780-042-38	\$1,891.03
780-042-39	\$2,224.36
780-042-40	\$1,716.43
780-042-41	\$1,891.03
780-042-42	\$1,716.43
780-042-43	\$1,716.43
780-042-44	\$1,716.43
780-042-45	\$1,891.03
780-042-46	\$2,075.73
780-042-47	\$1,716.43

Exhibit C**CFD No. 92-1 of the Capistrano Unified School District**

<u>Assessor's Parcel Number</u>	<u>FY 2015-2016 Special Tax</u>
780-042-48	\$2,075.73
780-042-49	\$2,033.88
780-042-50	\$2,075.73
780-042-51	\$1,872.27
780-042-52	\$2,075.73
780-042-53	\$2,133.45
780-042-54	\$1,891.03
780-042-55	\$2,075.73
780-042-56	\$1,895.36
780-042-57	\$2,075.73
780-042-58	\$1,866.50
780-042-59	\$2,281.35
780-042-60	\$2,159.42
780-042-61	\$2,256.10
780-042-62	\$2,075.73
780-042-63	\$2,005.02
780-042-64	\$2,143.55
780-042-65	\$2,176.74
780-042-66	\$1,867.94
780-042-67	\$1,891.03
780-042-68	\$2,075.73
780-042-69	\$1,716.43
780-042-70	\$1,891.03
780-043-01	\$1,891.03
780-043-02	\$1,871.55
780-043-03	\$2,075.73
780-043-04	\$1,891.03
780-043-05	\$2,075.73
780-043-06	\$1,891.03
780-043-07	\$2,075.73
780-043-08	\$1,839.08
780-043-09	\$1,891.03
780-043-10	\$2,526.66
780-043-11	\$1,716.43
780-043-12	\$1,839.08
780-043-13	\$1,891.03
780-043-14	\$1,716.43
780-043-15	\$2,075.73
780-043-16	\$1,847.74
780-043-17	\$1,867.94
780-043-18	\$1,824.65
780-043-19	\$1,891.03
780-043-20	\$1,716.43
780-043-21	\$1,716.43
780-043-22	\$2,146.44
780-043-23	\$2,075.73
780-043-24	\$1,891.03
780-043-25	\$1,863.61

Exhibit C**CFD No. 92-1 of the Capistrano Unified School District**

<u>Assessor's Parcel Number</u>	<u>FY 2015-2016 Special Tax</u>
780-043-26	\$2,075.73
780-043-27	\$1,891.03
780-043-28	\$2,075.73
780-043-29	\$1,716.43
780-043-30	\$1,891.03
780-043-31	\$1,891.03
780-043-32	\$2,075.73
780-043-33	\$1,716.43
780-043-34	\$2,075.73
780-043-35	\$1,891.03
780-043-36	\$1,716.43
780-043-37	\$2,075.73
780-043-38	\$1,891.03
780-043-39	\$2,075.73
780-043-40	\$1,853.51
780-043-41	\$2,075.73
780-043-42	\$1,716.43
780-043-43	\$2,075.73
780-043-44	\$1,716.43
780-043-45	\$2,217.14
780-043-46	\$1,891.03
780-043-47	\$2,075.73
780-043-48	\$2,075.73
780-043-49	\$1,891.03
780-043-50	\$1,839.08
780-043-51	\$2,187.56
780-043-52	\$2,182.51
780-043-53	\$1,891.03
780-043-54	\$2,075.73
780-043-55	\$1,891.03
780-043-56	\$1,716.43
780-043-57	\$2,365.05
780-043-58	\$1,891.03
780-043-59	\$1,716.43
780-043-60	\$1,891.03
780-043-61	\$1,860.00
780-051-01	\$1,154.39
780-051-02	\$1,478.34
780-051-03	\$1,478.34
780-051-04	\$1,299.41
780-051-05	\$1,478.34
780-051-06	\$1,478.34
780-051-07	\$1,299.41
780-051-08	\$1,269.82
780-051-09	\$1,299.41
780-051-10	\$1,478.34
780-051-11	\$1,478.34
780-051-12	\$1,154.39

Exhibit C**CFD No. 92-1 of the Capistrano Unified School District**

<u>Assessor's Parcel Number</u>	<u>FY 2015-2016 Special Tax</u>
780-051-13	\$1,478.34
780-051-14	\$1,299.41
780-051-15	\$1,232.31
780-051-16	\$1,478.34
780-051-17	\$1,299.41
780-051-18	\$1,803.01
780-051-19	\$1,478.34
780-051-20	\$1,154.39
780-051-21	\$1,478.34
780-051-22	\$1,299.41
780-051-23	\$1,154.39
780-051-24	\$1,478.34
780-051-25	\$1,299.41
780-051-26	\$1,478.34
780-051-27	\$1,299.41
780-051-28	\$1,478.34
780-051-29	\$1,289.30
780-051-30	\$1,478.34
780-051-31	\$1,299.41
780-051-32	\$1,556.26
780-051-33	\$1,299.41
780-051-34	\$1,478.34
780-051-35	\$1,299.41
780-051-36	\$1,627.68
780-051-37	\$1,289.30
780-051-38	\$1,299.41
780-051-39	\$1,478.34
780-051-40	\$1,299.41
780-051-41	\$1,627.68
780-051-42	\$1,478.34
780-051-43	\$1,154.39
780-051-44	\$1,299.41
780-051-45	\$1,478.34
780-051-46	\$1,478.34
780-051-47	\$1,154.39
780-051-48	\$1,510.08
780-051-49	\$1,299.41
780-051-50	\$1,399.69
780-051-51	\$1,299.41
780-051-52	\$1,478.34
780-051-53	\$1,299.41
780-051-54	\$1,478.34
780-051-55	\$1,270.55
780-051-56	\$1,478.34
780-051-57	\$1,152.94
780-051-58	\$1,299.41
780-051-59	\$1,478.34
780-051-60	\$1,154.39

Exhibit C**CFD No. 92-1 of the Capistrano Unified School District**

<u>Assessor's Parcel Number</u>	<u>FY 2015-2016 Special Tax</u>
780-051-61	\$1,299.41
780-051-62	\$1,238.80
780-051-63	\$1,478.34
780-051-64	\$1,299.41
780-051-65	\$1,478.34
780-051-66	\$1,299.41
780-051-67	\$1,154.39
780-051-68	\$1,299.41
780-051-69	\$1,478.34
780-051-70	\$1,154.39
780-051-71	\$1,697.67
780-051-72	\$1,299.41
780-051-73	\$1,152.94
780-051-74	\$1,478.34
780-051-75	\$1,152.94
780-051-76	\$1,478.34
780-051-77	\$1,299.41
780-051-78	\$1,478.34
780-051-79	\$1,152.94
780-051-80	\$1,299.41
780-051-81	\$1,608.20
780-051-82	\$1,299.41
780-051-83	\$1,270.55
780-051-84	\$1,769.10
780-051-85	\$1,299.41
780-061-01	\$1,862.89
780-061-02	\$2,085.83
780-061-03	\$1,911.23
780-061-04	\$2,273.42
780-061-05	\$2,085.83
780-061-06	\$1,862.89
780-061-07	\$1,911.23
780-061-08	\$2,085.83
780-061-10	\$1,616.86
780-061-11	\$1,721.48
780-061-12	\$1,587.28
780-061-13	\$1,721.48
780-061-14	\$1,465.35
780-061-15	\$1,721.48
780-061-16	\$1,587.28
780-062-01	\$2,085.83
780-062-02	\$1,862.89
780-062-03	\$2,084.39
780-062-04	\$2,085.83
780-062-05	\$2,163.75
780-062-06	\$2,085.83
780-062-07	\$1,862.89
780-062-08	\$1,911.23

Exhibit C**CFD No. 92-1 of the Capistrano Unified School District**

<u>Assessor's Parcel Number</u>	<u>FY 2015-2016 Special Tax</u>
780-062-09	\$1,862.89
780-062-10	\$2,085.83
780-062-11	\$2,127.68
780-062-12	\$1,862.89
780-062-13	\$2,145.71
780-062-14	\$2,085.83
780-062-15	\$1,862.89
780-062-16	\$2,085.83
780-062-17	\$2,148.60
780-062-18	\$1,911.23
780-062-19	\$1,911.23
780-062-20	\$2,085.83
780-062-21	\$1,911.23
780-062-22	\$2,144.27
780-062-23	\$2,085.83
780-063-01	\$2,272.70
780-063-02	\$2,192.61
780-063-03	\$1,862.89
780-063-04	\$2,085.83
780-063-05	\$1,911.23
780-063-06	\$2,085.83
780-063-07	\$1,862.89
780-064-01	\$1,721.48
780-064-02	\$1,465.35
780-064-03	\$1,604.60
780-064-04	\$1,721.48
780-064-05	\$1,721.48
780-064-06	\$1,695.50
780-064-07	\$1,587.28
780-064-08	\$1,721.48
780-064-09	\$1,587.28
780-064-10	\$1,465.35
780-064-11	\$1,721.48
780-064-12	\$1,465.35
780-064-13	\$1,721.48
780-064-14	\$1,721.48
780-064-15	\$1,587.28
780-064-16	\$1,587.28
780-064-17	\$1,721.48
780-064-18	\$1,721.48
780-064-19	\$1,587.28
780-064-20	\$1,465.35
780-064-21	\$1,713.54
780-064-22	\$1,721.48
780-064-23	\$1,587.28
780-071-03	\$2,273.42
780-071-04	\$1,862.89
780-071-05	\$2,085.83

Exhibit C**CFD No. 92-1 of the Capistrano Unified School District**

<u>Assessor's Parcel Number</u>	<u>FY 2015-2016 Special Tax</u>
780-071-07	\$1,997.09
780-071-08	\$2,085.83
780-071-09	\$1,911.23
780-071-10	\$2,085.83
780-071-11	\$1,862.89
780-071-12	\$1,911.23
780-071-13	\$2,273.42
780-071-14	\$1,862.89
780-071-15	\$2,085.83
780-071-16	\$1,911.23
780-071-18	\$1,465.35
780-071-19	\$1,587.28
780-071-20	\$1,721.48
780-071-21	\$1,465.35
780-071-22	\$1,721.48
780-071-23	\$1,587.28
780-071-24	\$1,721.48
780-071-25	\$1,587.28
780-071-26	\$1,721.48
780-071-27	\$1,587.28
780-071-28	\$1,721.48
780-071-30	\$1,587.28
780-071-31	\$1,721.48
780-071-32	\$1,721.48
780-071-33	\$1,465.35
780-071-34	\$1,721.48
780-071-35	\$1,587.28
780-071-36	\$1,721.48
780-071-37	\$1,587.28
780-071-38	\$1,721.48
780-071-39	\$1,587.28
780-071-40	\$1,606.04
780-071-41	\$1,929.27
780-071-42	\$1,587.28
780-071-43	\$1,606.04
780-071-44	\$1,721.48
780-071-45	\$1,721.48
780-071-46	\$1,587.28
780-071-47	\$1,465.35
780-071-48	\$1,465.35
780-071-49	\$1,587.28
780-071-50	\$1,587.28
780-071-51	\$1,465.35
780-071-52	\$1,587.28
780-071-53	\$1,465.35
780-071-54	\$1,587.28
780-071-55	\$1,587.28
780-091-17	\$1,831.14

Exhibit C**CFD No. 92-1 of the Capistrano Unified School District**

<u>Assessor's Parcel Number</u>	<u>FY 2015-2016 Special Tax</u>
780-091-18	\$1,831.14
780-091-19	\$1,957.41
780-091-20	\$1,655.10
780-091-21	\$1,655.10
780-091-22	\$1,831.14
780-091-23	\$1,831.14
780-091-24	\$1,655.10
780-091-25	\$1,656.54
780-091-26	\$1,662.32
780-091-27	\$1,964.62
780-091-28	\$1,655.10
780-091-29	\$1,831.14
780-091-30	\$1,983.38
780-091-31	\$1,831.14
780-091-32	\$1,792.18
780-091-33	\$1,831.14
780-091-34	\$1,655.10
780-091-35	\$1,430.72
780-091-36	\$1,831.14
780-091-37	\$1,655.10
780-091-38	\$1,655.10
780-091-39	\$1,983.38
780-091-40	\$1,792.18
780-091-41	\$1,929.27
780-091-42	\$1,831.14
780-091-43	\$1,983.38
780-091-44	\$1,792.18
780-091-45	\$1,655.10
780-091-46	\$1,831.14
780-091-47	\$1,792.18
780-091-48	\$1,983.38
780-091-49	\$1,752.50
780-091-50	\$1,741.68
780-091-51	\$1,975.44
780-091-52	\$1,655.10
780-091-53	\$1,430.72
780-091-54	\$1,655.10
780-091-55	\$1,655.10
780-091-56	\$1,831.14
780-091-57	\$1,831.14
780-091-58	\$1,655.10
780-091-59	\$1,831.14
780-091-60	\$1,857.84
780-091-61	\$1,831.14
780-091-62	\$1,655.10
780-091-63	\$1,831.14
780-091-64	\$1,655.10
780-091-65	\$1,655.10

Exhibit C

CFD No. 92-1 of the Capistrano Unified School District

<u>Assessor's Parcel Number</u>	<u>FY 2015-2016 Special Tax</u>
780-092-01	\$1,848.46
780-092-02	\$1,655.10
780-092-03	\$1,831.14
780-092-04	\$1,655.10
780-092-05	\$1,831.14
780-092-06	\$1,831.14
780-092-07	\$1,655.10
780-092-08	\$1,655.10
780-092-09	\$1,831.14
780-092-10	\$1,655.10
780-092-11	\$1,831.14
780-092-12	\$1,655.10
780-092-13	\$1,964.62
780-092-14	\$1,831.14
780-092-15	\$1,430.72
780-092-16	\$1,983.38
780-092-17	\$1,655.10
780-092-18	\$1,662.32
780-092-19	\$1,983.38
780-092-20	\$1,430.72
780-092-21	\$1,792.18
780-092-22	\$1,831.14
780-092-23	\$1,430.72
780-092-24	\$1,655.10
780-092-25	\$1,831.14
780-092-26	\$1,655.10
780-092-27	\$1,831.14
780-101-01	\$1,465.35
780-101-02	\$1,721.48
780-101-03	\$1,587.28
780-101-04	\$1,465.35
780-101-05	\$1,587.28
780-101-06	\$1,465.35
780-101-07	\$1,587.28
780-101-08	\$1,929.27
780-101-09	\$1,587.28
780-101-10	\$1,721.48
780-101-11	\$1,465.35
780-101-12	\$1,721.48
780-101-13	\$1,721.48
780-101-14	\$1,465.35
780-101-15	\$1,587.28
780-101-16	\$1,721.48
780-101-17	\$1,649.33
780-101-18	\$1,826.09
780-101-19	\$1,587.28
780-101-20	\$1,721.48
780-101-21	\$1,587.28

Exhibit C**CFD No. 92-1 of the Capistrano Unified School District**

<u>Assessor's Parcel Number</u>	<u>FY 2015-2016 Special Tax</u>
780-101-22	\$1,721.48
780-101-23	\$1,587.28
780-101-24	\$1,721.48
780-101-25	\$1,587.28
780-101-26	\$1,465.35
780-101-27	\$1,587.28
780-101-28	\$1,721.48
780-101-29	\$1,465.35
780-101-30	\$1,637.06
780-101-31	\$1,587.28
780-101-39	\$1,862.89
780-101-40	\$2,085.83
780-101-41	\$1,911.23
780-101-42	\$2,085.83
780-101-43	\$1,862.89
780-101-44	\$2,085.83
780-101-45	\$2,086.55
780-101-46	\$2,085.83
780-101-47	\$1,862.89
780-101-49	\$1,911.23
780-101-50	\$2,085.83
780-102-02	\$2,085.83
780-102-03	\$2,001.42
780-102-04	\$2,046.15
780-102-05	\$2,053.36
780-102-06	\$2,085.83
780-102-07	\$1,911.23
780-102-08	\$2,085.83
780-102-09	\$2,795.78
780-102-10	\$2,085.83
780-102-11	\$1,911.23
780-102-12	\$2,085.83
780-102-13	\$1,862.89
780-102-14	\$1,911.23
780-111-01	\$2,945.85
780-111-02	\$2,591.60
780-111-03	\$2,746.72
780-111-05	\$2,585.82
780-111-06	\$2,886.69
780-111-07	\$2,585.82
780-111-08	\$2,547.58
780-111-09	\$2,585.82
780-111-10	\$2,585.82
780-111-12	\$2,744.55
780-111-13	\$2,591.60
780-111-14	\$2,547.58
780-111-15	\$2,513.67
780-111-16	\$2,547.58

Exhibit C**CFD No. 92-1 of the Capistrano Unified School District**

<u>Assessor's Parcel Number</u>	<u>FY 2015-2016 Special Tax</u>
780-111-17	\$2,585.82
780-111-18	\$2,585.82
780-111-19	\$2,513.67
780-111-20	\$2,547.58
780-111-21	\$2,513.67
780-111-22	\$2,547.58
780-111-23	\$3,079.32
780-111-25	\$2,547.58
780-111-28	\$2,812.37
780-111-29	\$2,640.66
780-111-30	\$2,850.61
780-111-31	\$2,585.82
780-111-32	\$2,591.60
780-111-33	\$2,585.82
780-111-34	\$2,585.82
780-111-35	\$3,002.12
780-111-38	\$2,513.67
780-121-01	\$2,585.82
780-121-02	\$2,591.60
780-121-03	\$2,585.82
780-121-04	\$2,085.83
780-122-01	\$2,585.82
780-122-02	\$2,585.82
780-122-03	\$2,841.95
780-122-04	\$2,585.82
780-122-05	\$2,547.58
780-122-06	\$2,585.82
780-122-07	\$2,547.58
780-122-08	\$2,591.60
780-122-09	\$2,585.82
780-122-10	\$3,023.77
780-122-11	\$2,513.67
780-122-12	\$2,585.82
780-122-13	\$2,591.60
780-122-15	\$2,085.83
780-122-16	\$1,911.23
780-122-17	\$2,133.45
780-122-18	\$2,085.83
780-122-19	\$1,911.23
780-122-20	\$2,356.39
780-122-21	\$1,862.89
780-122-22	\$2,085.83
780-122-23	\$1,911.23
780-122-25	\$2,085.83
780-122-26	\$1,862.89
780-122-27	\$2,085.83
780-122-28	\$2,153.65
780-122-29	\$2,085.83

Exhibit C**CFD No. 92-1 of the Capistrano Unified School District**

<u>Assessor's Parcel Number</u>	<u>FY 2015-2016 Special Tax</u>
780-122-30	\$1,862.89
780-122-31	\$2,085.83
780-122-32	\$1,862.89
780-122-33	\$2,085.83
780-122-34	\$1,911.23
780-122-35	\$2,085.83
780-122-36	\$2,132.01
780-122-37	\$2,085.83
780-122-38	\$2,151.49
780-122-39	\$2,119.02
780-131-01	\$2,196.22
780-131-02	\$2,349.90
780-131-03	\$2,280.63
780-131-04	\$2,569.95
780-131-05	\$2,349.90
780-131-06	\$2,349.90
780-131-07	\$2,280.63
780-131-08	\$2,196.22
780-131-09	\$2,349.90
780-131-10	\$2,280.63
780-131-11	\$2,196.22
780-131-12	\$2,349.90
780-131-13	\$2,349.90
780-131-14	\$2,196.22
780-131-15	\$2,280.63
780-131-16	\$2,349.90
780-131-17	\$2,196.22
780-131-18	\$2,349.90
780-131-19	\$2,280.63
780-131-20	\$2,349.90
780-131-21	\$2,427.10
780-131-22	\$2,349.90
780-131-23	\$2,280.63
780-141-01	\$2,349.90
780-141-02	\$2,280.63
780-141-03	\$2,349.90
780-141-04	\$2,196.22
780-141-05	\$2,439.36
780-141-06	\$2,196.22
780-141-07	\$2,349.90
780-141-08	\$2,280.63
780-141-09	\$2,349.90
780-141-10	\$2,196.22
780-141-11	\$2,349.90
780-141-12	\$2,196.22
780-141-13	\$2,349.90
780-141-14	\$2,395.35
780-141-15	\$2,280.63

Exhibit C**CFD No. 92-1 of the Capistrano Unified School District**

<u>Assessor's Parcel Number</u>	<u>FY 2015-2016 Special Tax</u>
780-141-16	\$2,196.22
780-141-17	\$2,280.63
780-141-18	\$2,349.90
780-141-19	\$2,280.63
780-141-20	\$2,196.22
780-141-21	\$2,349.90
780-141-22	\$2,349.90
780-141-23	\$2,280.63
780-141-24	\$2,349.90
780-141-25	\$2,349.90
780-141-26	\$2,280.63
780-141-27	\$2,349.90
780-151-01	\$1,299.41
780-151-02	\$1,478.34
780-151-03	\$1,784.25
780-151-04	\$1,299.41
780-151-05	\$1,784.25
780-151-06	\$1,478.34
780-151-07	\$1,784.25
780-151-08	\$1,478.34
780-151-09	\$1,784.25
780-151-10	\$1,478.34
780-151-11	\$1,653.66
780-151-12	\$1,478.34
780-151-13	\$1,784.25
780-151-14	\$1,714.98
780-151-15	\$1,299.41
780-151-16	\$1,968.23
780-151-17	\$1,714.98
780-151-18	\$1,784.25
780-151-19	\$1,299.41
780-151-20	\$1,478.34
780-151-21	\$1,299.41
780-151-22	\$1,478.34
780-151-23	\$1,784.25
780-151-24	\$1,299.41
780-151-25	\$1,478.34
780-151-26	\$1,820.32
780-151-27	\$1,784.25
780-151-28	\$1,478.34
780-151-29	\$1,299.41
780-151-30	\$1,478.34
780-151-31	\$1,784.25
780-151-32	\$1,478.34
780-151-33	\$1,784.25
780-151-34	\$1,478.34
780-151-35	\$1,784.25
780-151-36	\$1,478.34

Exhibit C**CFD No. 92-1 of the Capistrano Unified School District**

<u>Assessor's Parcel Number</u>	<u>FY 2015-2016 Special Tax</u>
780-171-01	\$1,011.53
780-171-02	\$1,305.90
780-171-03	\$1,145.73
780-171-04	\$1,344.14
780-171-05	\$1,305.90
780-171-06	\$1,167.37
780-171-07	\$1,269.10
780-171-08	\$1,300.85
780-171-09	\$1,344.14
780-171-10	\$1,344.14
780-171-11	\$1,305.90
780-171-12	\$1,344.14
780-171-13	\$1,011.53
780-171-14	\$1,305.90
780-171-15	\$1,344.14
780-171-16	\$1,344.14
780-171-17	\$1,041.83
780-171-18	\$1,344.14
780-171-19	\$1,011.53
780-171-20	\$1,305.90
780-171-21	\$1,344.14
780-171-22	\$1,344.14
780-171-23	\$1,305.90
780-171-24	\$1,344.14
780-171-25	\$1,011.53
780-171-26	\$1,344.14
780-171-27	\$1,305.90
780-171-28	\$1,344.14
780-171-29	\$1,305.90
780-171-30	\$1,344.14
780-171-31	\$1,344.14
780-171-32	\$1,344.14
780-171-33	\$1,305.90
780-171-34	\$1,344.14
780-171-35	\$1,305.90
780-171-36	\$1,344.14
780-171-37	\$1,305.90
780-171-38	\$1,344.14
780-171-39	\$1,011.53
780-171-40	\$1,344.14
780-171-41	\$1,344.14
780-171-42	\$1,305.90
780-171-43	\$1,305.90
780-171-44	\$1,344.14
780-171-45	\$1,133.46
780-171-46	\$1,011.53
780-171-47	\$1,305.90
780-171-48	\$1,305.90

Exhibit C**CFD No. 92-1 of the Capistrano Unified School District**

<u>Assessor's Parcel Number</u>	<u>FY 2015-2016 Special Tax</u>
780-171-49	\$1,305.90
780-171-50	\$1,305.90
780-171-51	\$1,344.14
780-171-52	\$1,344.14
780-171-53	\$1,011.53
780-181-01	\$1,305.90
780-181-02	\$1,344.14
780-181-03	\$1,011.53
780-181-04	\$1,305.90
780-181-05	\$1,344.14
780-181-06	\$1,344.14
780-181-07	\$1,011.53
780-181-08	\$1,344.14
780-181-09	\$1,305.90
780-181-10	\$1,344.14
780-181-11	\$1,344.14
780-181-12	\$1,305.90
780-181-13	\$1,344.14
780-181-14	\$1,167.37
780-181-15	\$1,344.14
780-181-16	\$1,305.90
780-181-17	\$1,344.14
780-181-18	\$1,305.90
780-181-19	\$1,305.90
780-181-20	\$1,344.14
780-181-21	\$1,344.14
780-181-22	\$1,305.90
780-181-23	\$1,344.14
780-181-24	\$1,011.53
780-181-25	\$1,305.90
780-181-26	\$1,344.14
780-181-27	\$1,305.90
780-181-28	\$1,344.14
780-181-29	\$1,305.90
780-181-30	\$1,344.14
780-181-31	\$1,011.53
780-181-32	\$1,344.14
780-181-33	\$1,305.90
780-181-34	\$1,344.14
780-181-35	\$1,011.53
780-181-36	\$1,305.90
780-181-37	\$1,344.14
780-181-38	\$1,305.90
780-181-39	\$1,344.14
780-181-40	\$1,011.53
780-181-41	\$1,344.14
780-181-42	\$1,344.14
780-181-43	\$1,305.90

Exhibit C**CFD No. 92-1 of the Capistrano Unified School District**

<u>Assessor's Parcel Number</u>	<u>FY 2015-2016 Special Tax</u>
780-181-44	\$1,011.53
780-181-45	\$1,344.14
780-181-46	\$1,305.90
780-181-47	\$1,344.14
780-181-48	\$1,305.90
780-181-49	\$1,344.14
780-181-50	\$1,011.53
780-181-51	\$1,344.14
780-192-01	\$1,660.87
780-192-02	\$1,783.53
780-192-03	\$1,525.95
780-192-04	\$1,660.87
780-192-05	\$1,783.53
780-192-06	\$1,525.95
780-192-07	\$1,660.87
780-192-08	\$1,525.95
780-192-09	\$1,660.87
780-192-10	\$1,660.87
780-192-11	\$1,689.01
780-192-12	\$1,660.87
780-192-13	\$1,660.87
780-192-14	\$1,783.53
780-192-15	\$1,775.59
780-192-16	\$1,783.53
780-192-17	\$1,660.87
780-192-18	\$1,783.53
780-192-19	\$1,761.88
780-192-20	\$1,525.95
780-192-21	\$1,783.53
780-192-22	\$1,660.87
780-192-23	\$1,525.95
780-192-24	\$1,660.87
780-192-25	\$1,783.53
780-192-26	\$1,525.95
780-192-27	\$1,783.53
780-192-28	\$1,660.87
780-192-29	\$1,525.95
780-192-30	\$1,778.48
780-192-31	\$1,660.87
780-192-32	\$1,660.87
780-192-33	\$1,660.87
780-192-34	\$1,783.53
780-192-35	\$1,660.87
780-192-36	\$1,525.95
780-192-37	\$1,783.53
780-192-38	\$1,525.95
780-192-39	\$1,783.53
780-192-40	\$1,660.87

Exhibit C**CFD No. 92-1 of the Capistrano Unified School District**

<u>Assessor's Parcel Number</u>	<u>FY 2015-2016 Special Tax</u>
780-192-41	\$1,783.53
780-192-42	\$1,525.95
780-192-43	\$1,660.87
780-192-44	\$1,783.53
780-192-45	\$1,525.95
780-192-46	\$1,660.87
780-192-47	\$1,783.53
780-192-48	\$1,525.95
780-192-49	\$1,764.05
780-192-50	\$1,660.87
780-192-51	\$1,783.53
780-192-52	\$1,725.81
780-192-53	\$1,525.95
780-192-54	\$1,783.53
780-192-55	\$1,783.53
780-192-56	\$1,525.95
780-192-57	\$1,783.53
780-192-58	\$1,525.95
780-192-59	\$1,783.53
780-192-60	\$1,854.95
780-192-61	\$1,660.87
780-192-62	\$2,178.18
780-192-63	\$1,525.95
780-192-64	\$1,783.53
780-192-65	\$1,834.03
780-192-66	\$1,660.87
780-192-67	\$1,783.53
780-192-68	\$1,766.93
780-193-01	\$2,403.29
780-193-02	\$2,049.76
780-193-03	\$2,239.51
780-193-04	\$2,207.76
780-193-05	\$2,239.51
780-193-06	\$2,049.76
780-193-07	\$2,403.29
780-193-08	\$2,049.76
780-193-09	\$2,403.29
780-193-10	\$2,239.51
780-193-11	\$2,049.76
780-193-12	\$2,403.29
780-193-13	\$2,239.51
780-193-14	\$2,403.29
780-193-15	\$2,239.51
780-193-16	\$2,403.29
780-193-17	\$2,049.76
780-193-18	\$2,239.51
780-193-19	\$2,049.76
780-193-20	\$2,403.29

Exhibit C**CFD No. 92-1 of the Capistrano Unified School District**

<u>Assessor's Parcel Number</u>	<u>FY 2015-2016 Special Tax</u>
780-193-21	\$2,239.51
780-193-22	\$2,403.29
780-193-23	\$2,523.78
780-193-24	\$2,403.29
780-193-25	\$2,386.69
780-193-26	\$2,049.76
780-193-27	\$2,386.69
780-193-28	\$2,403.29
780-193-29	\$2,386.69
780-193-30	\$2,572.84
780-193-31	\$2,159.42
780-193-32	\$2,403.29
780-193-33	\$2,153.65
780-193-34	\$2,403.29
780-193-35	\$2,049.76
780-193-36	\$2,556.24
780-193-37	\$2,403.29
780-193-38	\$2,049.76
780-193-39	\$2,239.51
780-193-40	\$2,701.98
780-193-41	\$2,049.76
780-193-42	\$2,403.29
780-193-43	\$2,239.51
780-193-44	\$2,230.13
780-193-45	\$2,239.51
780-193-46	\$2,403.29
780-193-47	\$2,239.51
780-193-48	\$2,403.29
780-193-49	\$2,239.51
780-193-50	\$2,049.76
780-193-51	\$2,239.51
780-193-52	\$2,610.35
780-193-53	\$2,403.29
780-193-54	\$2,239.51
780-193-55	\$2,403.29
780-193-56	\$2,505.02
780-193-57	\$2,403.29
780-193-58	\$2,049.76
780-193-59	\$2,239.51
780-193-60	\$2,403.29
780-193-61	\$2,049.76
780-193-62	\$2,403.29
780-193-63	\$2,239.51
780-193-64	\$2,239.51
780-193-65	\$2,049.76
780-193-66	\$2,403.29
780-193-67	\$2,239.51
780-193-68	\$2,403.29

Exhibit C**CFD No. 92-1 of the Capistrano Unified School District**

<u>Assessor's Parcel Number</u>	<u>FY 2015-2016 Special Tax</u>
780-193-69	\$2,403.29
780-193-70	\$2,202.71
780-193-71	\$2,239.51
780-193-72	\$2,403.29
780-193-73	\$2,239.51
780-193-74	\$2,049.76
780-193-75	\$2,239.51
780-193-76	\$2,049.76
780-193-77	\$2,239.51
780-193-78	\$2,239.51
780-201-01	\$1,681.80
780-201-02	\$1,404.02
780-201-03	\$1,414.84
780-201-04	\$1,588.00
780-201-05	\$1,404.02
780-201-06	\$1,588.00
780-201-07	\$1,414.84
780-201-08	\$1,588.00
780-201-09	\$1,549.76
780-201-10	\$1,707.77
780-201-11	\$1,414.84
780-201-12	\$1,588.00
780-201-13	\$1,414.84
780-201-14	\$1,588.00
780-201-15	\$1,527.40
780-201-16	\$1,530.28
780-201-17	\$1,404.02
780-201-18	\$1,414.84
780-201-19	\$1,543.99
780-201-20	\$1,999.25
780-201-21	\$1,588.00
780-201-22	\$1,404.02
780-201-23	\$1,588.00
780-201-24	\$1,404.02
780-201-25	\$1,707.05
780-201-26	\$1,510.08
780-201-27	\$1,588.00
780-201-28	\$1,404.02
780-201-29	\$1,588.00
780-201-30	\$1,404.02
780-201-31	\$1,588.00
780-201-32	\$1,404.02
780-201-33	\$1,588.00
780-201-34	\$1,543.99
780-201-35	\$1,588.00
780-201-36	\$1,404.02
780-201-37	\$1,404.02
780-201-38	\$1,588.00

Exhibit C**CFD No. 92-1 of the Capistrano Unified School District**

<u>Assessor's Parcel Number</u>	<u>FY 2015-2016 Special Tax</u>
780-201-39	\$1,404.02
780-201-40	\$1,588.00
780-202-01	\$1,414.84
780-202-02	\$1,588.00
780-202-03	\$1,404.02
780-202-04	\$1,414.84
780-202-05	\$1,404.02
780-202-06	\$1,588.00
780-202-07	\$1,404.02
780-202-08	\$1,414.84
780-202-09	\$1,588.00
780-202-10	\$1,404.02
780-202-11	\$1,588.00
780-202-12	\$1,414.84
780-202-13	\$1,588.00
780-202-14	\$1,404.02
780-202-15	\$1,414.84
780-202-16	\$1,404.02
780-202-17	\$1,404.02
780-202-18	\$1,800.12
780-202-19	\$1,414.84
780-202-20	\$1,681.80
780-202-21	\$1,537.50
780-202-22	\$1,714.98
780-202-23	\$1,404.02
780-202-24	\$1,588.00
780-202-25	\$1,404.02
780-202-26	\$1,588.00
780-202-27	\$1,404.02
780-202-28	\$1,404.02
780-202-29	\$1,588.00
780-202-30	\$1,414.84
780-203-01	\$1,404.02
780-203-02	\$1,588.00
780-211-01	\$1,660.87
780-211-02	\$1,525.95
780-211-03	\$1,783.53
780-211-04	\$1,783.53
780-211-05	\$1,660.87
780-211-06	\$1,783.53
780-211-07	\$1,783.53
780-211-08	\$1,783.53
780-211-09	\$1,525.95
780-211-10	\$1,783.53
780-211-11	\$1,783.53
780-211-12	\$1,660.87
780-211-13	\$1,783.53
780-211-14	\$1,783.53

Exhibit C

CFD No. 92-1 of the Capistrano Unified School District

<u>Assessor's Parcel Number</u>	<u>FY 2015-2016 Special Tax</u>
780-211-15	\$1,840.52
780-211-16	\$1,660.87
780-211-17	\$1,783.53
780-211-18	\$1,525.95
780-211-19	\$1,660.87
780-211-20	\$1,783.53
780-211-21	\$1,783.53
780-211-22	\$1,783.53
780-211-23	\$1,660.87
780-211-24	\$1,783.53
780-211-25	\$1,660.87
780-211-26	\$1,783.53
780-211-27	\$1,783.53
780-211-28	\$1,660.87
780-211-29	\$1,899.69
780-211-30	\$1,660.87
780-211-31	\$1,660.87
780-211-32	\$1,783.53
780-211-33	\$1,525.95
780-211-34	\$1,660.87
780-211-35	\$1,783.53
780-211-36	\$2,151.49
780-211-37	\$1,660.87
780-211-38	\$1,525.95
780-211-39	\$1,783.53
780-211-40	\$1,840.52
780-211-41	\$1,783.53
780-211-42	\$1,783.53
780-211-43	\$1,660.87
780-211-44	\$1,783.53
780-212-01	\$1,525.95
780-212-02	\$1,783.53
780-212-03	\$1,525.95
780-212-04	\$1,660.87
780-212-05	\$1,783.53
780-212-06	\$1,660.87
780-212-07	\$1,660.87
780-212-08	\$1,660.87
782-631-01	\$6,358.75
782-631-02	\$7,905.77
782-631-03	\$8,727.28
782-631-04	\$10,167.60
782-631-05	\$23,813.32
787-211-09	\$1,050.49
787-211-11	\$1,227.26
787-211-12	\$1,050.49
787-211-13	\$1,227.26
787-211-14	\$999.27

Exhibit C**CFD No. 92-1 of the Capistrano Unified School District**

<u>Assessor's Parcel Number</u>	<u>FY 2015-2016 Special Tax</u>
787-211-15	\$1,227.26
787-211-16	\$1,050.49
787-211-17	\$1,227.26
787-211-18	\$999.27
787-211-21	\$1,050.49
787-211-22	\$1,227.26
787-211-23	\$1,280.65
787-211-24	\$1,050.49
787-211-25	\$999.27
787-211-26	\$1,050.49
787-211-27	\$1,050.49
787-211-28	\$1,227.26
787-211-30	\$1,227.26
787-211-31	\$1,050.49
787-211-32	\$1,227.26
787-211-33	\$1,050.49
787-211-34	\$1,227.26
787-211-35	\$1,050.49
787-211-36	\$999.27
787-211-37	\$1,227.26
787-211-39	\$1,227.26
787-211-40	\$1,050.49
787-211-41	\$999.27
787-211-42	\$999.27
787-211-43	\$1,050.49
787-211-44	\$1,227.26
787-211-45	\$1,050.49
787-211-46	\$1,227.26
787-211-47	\$999.27
787-211-48	\$1,050.49
787-211-49	\$1,227.26
787-211-50	\$1,050.49
787-211-51	\$1,227.26
787-211-52	\$999.27
787-211-53	\$1,227.26
787-261-01	\$1,227.26
787-261-02	\$999.27
787-261-03	\$1,227.26
787-261-04	\$999.27
787-261-05	\$1,050.49
787-261-06	\$1,227.26
787-261-07	\$999.27
787-261-08	\$1,050.49
787-261-09	\$1,227.26
787-261-10	\$1,050.49
787-261-11	\$1,227.26
787-261-12	\$1,050.49
787-261-13	\$1,227.26

Exhibit C

CFD No. 92-1 of the Capistrano Unified School District

<u>Assessor's Parcel Number</u>	<u>FY 2015-2016 Special Tax</u>
787-261-14	\$999.27
787-261-15	\$1,227.26
787-261-16	\$1,050.49
787-261-17	\$999.27
787-261-18	\$1,227.26
787-261-19	\$1,050.49
787-261-20	\$1,050.49
787-261-21	\$1,227.26
787-261-22	\$1,050.49
787-261-23	\$1,050.49
787-261-24	\$999.27
787-261-25	\$999.27
787-261-26	\$1,050.49
787-261-27	\$1,227.26
787-261-28	\$1,050.49
787-261-29	\$999.27
787-261-30	\$1,227.26
787-261-31	\$1,050.49
787-261-32	\$1,227.26
787-261-33	\$1,050.49
787-261-34	\$1,050.49
787-261-35	\$1,227.26
787-261-36	\$1,050.49
787-261-37	\$1,227.26
787-261-38	\$1,050.49
787-261-39	\$999.27
787-271-01	\$336,457.23
787-281-04	\$1,227.26
787-281-05	\$1,050.49
787-281-06	\$1,050.49
787-281-07	\$1,227.26
787-281-08	\$1,227.26
787-281-09	\$999.27
787-281-10	\$1,050.49
787-281-11	\$1,227.26
787-281-12	\$999.27
787-281-13	\$1,227.26
787-281-14	\$1,050.49
787-281-15	\$1,227.26
787-281-16	\$1,050.49
787-281-17	\$1,227.26
787-281-18	\$1,050.49
787-281-19	\$1,227.26
787-281-20	\$999.27
787-281-21	\$1,227.26
787-281-22	\$1,050.49
787-281-23	\$1,227.26
787-281-24	\$999.27

Exhibit C**CFD No. 92-1 of the Capistrano Unified School District**

<u>Assessor's Parcel Number</u>	<u>FY 2015-2016 Special Tax</u>
787-281-25	\$1,227.26
787-281-26	\$999.27
787-281-27	\$1,227.26
787-281-28	\$1,227.26
787-281-29	\$1,050.49
787-281-30	\$999.27
787-281-31	\$1,050.49
787-281-32	\$1,227.26
787-281-33	\$1,050.49
787-281-34	\$1,227.26
787-281-35	\$999.27
787-281-36	\$999.27
787-281-37	\$1,227.26
787-281-38	\$1,227.26
787-281-39	\$1,227.26
787-281-40	\$1,050.49
787-281-41	\$1,050.49
787-281-42	\$1,227.26
787-281-43	\$999.27
787-281-44	\$1,050.49
787-281-45	\$1,227.26
787-281-46	\$999.27
787-281-47	\$1,050.49
787-281-48	\$1,227.26
787-281-49	\$999.27
787-281-50	\$1,050.49
787-281-51	\$1,227.26
787-281-52	\$1,050.49
787-281-53	\$999.27
787-281-54	\$999.27
787-281-55	\$1,227.26
787-281-56	\$1,227.26
787-281-57	\$1,099.55
787-281-58	\$1,227.26
787-281-59	\$1,050.49
787-281-60	\$1,050.49
787-281-61	\$1,227.26
787-281-62	\$1,050.49
787-281-63	\$1,227.26
787-281-64	\$1,050.49
787-281-65	\$1,227.26
787-281-66	\$1,050.49
787-281-69	\$1,050.49
787-281-70	\$1,227.26
787-281-71	\$1,227.26
787-281-72	\$1,050.49
787-281-73	\$1,050.49
938-805-42	\$835.49

Exhibit C

CFD No. 92-1 of the Capistrano Unified School District

<u>Assessor's Parcel Number</u>	<u>FY 2015-2016 Special Tax</u>
938-805-43	\$1,234.47
938-805-44	\$1,112.54
938-805-45	\$1,112.54
938-805-46	\$1,234.47
938-805-47	\$835.49
938-805-48	\$835.49
938-805-49	\$782.82
938-805-50	\$782.82
938-805-51	\$953.09
938-805-52	\$1,234.47
938-805-53	\$1,112.54
938-805-54	\$1,112.54
938-805-55	\$1,234.47
938-805-56	\$953.09
938-805-57	\$782.82
938-805-58	\$835.49
938-805-59	\$835.49
938-805-60	\$782.82
938-805-61	\$1,234.47
938-805-62	\$1,112.54
938-805-63	\$1,112.54
938-805-64	\$1,234.47
938-805-65	\$782.82
938-805-66	\$835.49
938-805-67	\$835.49
938-805-68	\$782.82
938-805-69	\$782.82
938-805-70	\$953.09
938-805-71	\$1,234.47
938-805-72	\$1,112.54
938-805-73	\$1,112.54
938-805-74	\$1,234.47
938-805-75	\$953.09
938-805-76	\$782.82
938-805-77	\$782.82
938-805-78	\$835.49
938-805-79	\$835.49
938-805-80	\$782.82
938-805-81	\$782.82
938-805-82	\$953.09
938-805-83	\$1,234.47
938-805-84	\$1,112.54
938-805-85	\$1,112.54
938-805-86	\$1,234.47
938-805-87	\$953.09
938-805-88	\$782.82
938-805-89	\$782.82
938-805-90	\$835.49

Exhibit C**CFD No. 92-1 of the Capistrano Unified School District**

<u>Assessor's Parcel Number</u>	<u>FY 2015-2016 Special Tax</u>
938-805-91	\$782.82
938-805-92	\$782.82
938-805-93	\$1,234.47
938-805-94	\$1,112.54
938-805-95	\$1,112.54
938-805-96	\$1,234.47
938-805-97	\$953.09
938-805-98	\$835.49
938-805-99	\$782.82
938-806-00	\$953.09
938-806-01	\$1,234.47
938-806-02	\$1,112.54
938-806-03	\$1,112.54
938-806-04	\$1,234.47
938-806-05	\$953.09
938-806-06	\$782.82
938-806-07	\$782.82
938-806-08	\$835.49
938-806-09	\$835.49
938-806-10	\$782.82
938-806-11	\$782.82
938-806-12	\$953.09
938-806-13	\$1,234.47
938-806-14	\$1,112.54
938-806-15	\$1,112.54
938-806-16	\$1,234.47
938-806-17	\$953.09
938-806-18	\$782.82
938-806-19	\$782.82
938-806-20	\$835.49
938-806-21	\$835.49
938-806-22	\$782.82
938-806-23	\$782.82
938-806-24	\$953.09
938-806-25	\$1,234.47
938-806-26	\$1,112.54
938-806-27	\$1,112.54
938-806-28	\$1,234.47
938-806-29	\$953.09
938-806-30	\$782.82
938-806-31	\$782.82
938-806-32	\$835.49
938-806-33	\$835.49
938-806-34	\$782.82
938-806-35	\$953.09
938-806-36	\$1,234.47
938-806-37	\$1,112.54
938-806-38	\$1,112.54

Exhibit C

CFD No. 92-1 of the Capistrano Unified School District

<u>Assessor's Parcel Number</u>	<u>FY 2015-2016 Special Tax</u>
938-806-39	\$1,234.47
938-806-40	\$953.09
938-806-41	\$782.82
938-806-42	\$782.82
938-806-43	\$835.49
938-806-44	\$835.49
938-806-45	\$782.82
938-806-46	\$782.82
938-806-47	\$953.09
938-806-48	\$1,234.47
938-806-49	\$1,112.54
938-806-50	\$1,112.54
938-806-51	\$1,234.47
938-806-52	\$953.09
938-806-53	\$782.82
938-806-54	\$782.82
938-806-55	\$835.49
938-806-56	\$835.49
938-806-57	\$782.82
938-806-58	\$782.82
938-806-59	\$953.09
938-806-60	\$1,234.47
938-806-61	\$1,112.54
938-806-62	\$1,112.54
938-806-63	\$953.09
938-806-64	\$953.09
938-806-65	\$782.82
938-806-66	\$782.82
938-806-67	\$835.49
938-806-68	\$835.49
938-806-69	\$782.82
938-806-70	\$953.09
938-806-71	\$1,234.47
938-806-72	\$1,112.54
938-806-73	\$1,112.54
938-806-74	\$782.82
938-806-75	\$835.49
938-806-76	\$835.49
938-806-77	\$782.82
938-806-78	\$782.82
938-806-79	\$953.09
938-806-80	\$1,234.47
938-806-81	\$1,112.54
938-806-82	\$1,112.54
938-806-83	\$1,234.47
938-806-84	\$953.09
938-806-85	\$782.82
938-806-86	\$782.82

Exhibit C**CFD No. 92-1 of the Capistrano Unified School District**

<u>Assessor's Parcel Number</u>	<u>FY 2015-2016 Special Tax</u>
938-806-87	\$835.49
938-806-88	\$835.49
938-806-89	\$782.82
938-806-90	\$782.82
938-806-91	\$956.70
938-806-92	\$1,234.47
938-806-93	\$1,112.54
938-806-94	\$953.09
938-806-95	\$1,234.47
938-806-96	\$1,112.54
938-806-97	\$1,112.54
938-806-98	\$782.82
938-806-99	\$782.82
938-807-00	\$835.49
938-807-01	\$1,112.54
938-807-02	\$1,112.54
938-807-03	\$1,234.47
938-807-04	\$782.82
938-807-05	\$835.49
938-807-06	\$835.49
938-807-07	\$782.82
938-807-08	\$1,234.47
938-807-09	\$1,112.54
938-807-10	\$1,112.54
938-807-11	\$1,234.47
938-807-12	\$782.82
938-807-13	\$835.49
938-807-14	\$953.09
938-807-15	\$1,234.47
938-807-16	\$1,112.54
938-807-17	\$1,112.54
938-807-18	\$1,234.47
938-807-19	\$782.82
938-807-20	\$782.82
938-807-21	\$835.49
938-807-22	\$835.49
938-807-23	\$782.82
938-807-24	\$956.70
938-807-25	\$1,234.47
938-807-26	\$1,112.54
938-807-27	\$1,112.54
938-807-28	\$1,234.47
938-807-29	\$953.09
938-807-30	\$782.82
938-807-31	\$835.49
938-837-68	\$1,052.66
938-837-69	\$885.27
938-837-70	\$1,052.66

Exhibit C

CFD No. 92-1 of the Capistrano Unified School District

<u>Assessor's Parcel Number</u>	<u>FY 2015-2016 Special Tax</u>
938-837-71	\$885.27
938-837-72	\$816.73
938-837-73	\$916.29
938-837-74	\$885.27
938-837-75	\$1,052.66
938-837-76	\$1,052.66
938-837-77	\$885.27
938-837-78	\$885.27
938-837-79	\$816.73
938-837-80	\$816.73
938-837-81	\$885.27
938-837-82	\$1,052.66
938-837-83	\$1,052.66
938-837-84	\$885.27
938-837-85	\$816.73
938-837-86	\$916.29
938-837-87	\$885.27
938-837-88	\$1,052.66
938-837-89	\$1,052.66
938-837-90	\$885.27
938-837-91	\$816.73
938-837-92	\$916.29
938-837-93	\$885.27
938-837-94	\$1,052.66
938-837-95	\$885.27
938-837-96	\$885.27
938-837-97	\$816.73
938-837-98	\$816.73
938-837-99	\$885.27
938-838-00	\$1,052.66
938-838-01	\$1,052.66
938-838-02	\$885.27
938-838-03	\$816.73
938-838-04	\$816.73
938-838-05	\$885.27
938-838-06	\$916.29
938-838-07	\$1,052.66
938-838-08	\$885.27
938-838-09	\$916.29
938-838-10	\$816.73
938-838-11	\$885.27
938-838-12	\$1,052.66
938-838-13	\$1,052.66
938-838-14	\$885.27
938-838-15	\$916.29
938-838-16	\$816.73
938-838-17	\$885.27
938-838-18	\$1,052.66

Exhibit C**CFD No. 92-1 of the Capistrano Unified School District**

<u>Assessor's Parcel Number</u>	<u>FY 2015-2016 Special Tax</u>
938-838-19	\$916.29
938-838-20	\$885.27
938-838-21	\$885.27
938-838-22	\$916.29
938-838-23	\$816.73
938-838-24	\$885.27
938-838-25	\$816.73
938-838-26	\$1,052.66
938-838-27	\$1,052.66
938-838-28	\$885.27
938-838-29	\$916.29
938-838-30	\$816.73
938-838-31	\$885.27
938-838-32	\$885.27
938-838-33	\$816.73
938-838-34	\$1,052.66
938-838-35	\$885.27
938-838-36	\$916.29
938-838-37	\$885.27
938-838-38	\$1,052.66
938-838-39	\$1,052.66
938-838-40	\$885.27
938-838-41	\$916.29
938-838-42	\$816.73
938-838-43	\$885.27
938-838-44	\$1,052.66
938-838-45	\$1,052.66
938-838-46	\$885.27
938-838-47	\$916.29
938-838-48	\$816.73
938-838-49	\$885.27
938-838-50	\$1,052.66
938-838-51	\$1,052.66
938-838-52	\$885.27
938-838-53	\$1,052.66
938-838-54	\$816.73
938-838-55	\$885.27
938-838-56	\$1,052.66
938-838-57	\$1,052.66
938-838-58	\$885.27
938-838-59	\$916.29
938-838-60	\$816.73
938-838-61	\$885.27
938-838-62	\$1,052.66
938-838-63	\$1,052.66
938-838-64	\$885.27
938-838-65	\$916.29
938-838-66	\$816.73

Exhibit C

CFD No. 92-1 of the Capistrano Unified School District

<u>Assessor's Parcel Number</u>	<u>FY 2015-2016 Special Tax</u>
938-838-67	\$885.27
938-838-68	\$1,052.66
938-838-69	\$1,052.66
938-838-70	\$885.27
938-838-71	\$916.29
938-838-72	\$816.73
938-838-73	\$885.27
938-838-74	\$1,052.66
938-838-75	\$1,052.66
938-838-76	\$885.27
938-838-77	\$916.29
938-838-78	\$816.73
938-838-79	\$885.27
938-838-80	\$1,052.66
938-838-81	\$885.27
938-838-82	\$916.29
938-838-83	\$816.73
938-838-84	\$885.27
938-838-85	\$1,052.66
938-838-86	\$1,052.66
938-838-87	\$885.27
938-838-88	\$916.29
938-838-89	\$916.29
938-838-90	\$885.27
938-838-91	\$1,052.66
938-838-92	\$1,052.66
938-838-93	\$885.27
938-838-94	\$816.73
938-838-95	\$916.29
938-838-96	\$885.27
938-838-97	\$1,052.66
938-838-98	\$1,052.66
938-838-99	\$1,052.66
938-839-00	\$885.27
938-839-01	\$916.29
938-839-02	\$1,052.66
938-839-03	\$885.27
938-839-04	\$916.29
938-839-05	\$816.73
938-839-06	\$885.27
938-839-07	\$1,052.66
938-839-08	\$885.27
938-839-09	\$885.27
938-839-10	\$916.29

Exhibit C

CFD No. 92-1 of the Capistrano Unified School District

<u>Assessor's Parcel Number</u>	<u>FY 2015-2016 Special Tax</u>
Total FY 2015-2016 Special Tax Levy	\$2,669,423.64
Total Number of Parcels Taxed	1,484