



Vision: An unwavering commitment to student success.

Mission: To prepare our students to meet the challenges of a rapidly changing world.

Item #7: Staff Recommendations for Negotiating a Long-Term Facility Lease with Community Roots Academy

The Road to September 9

May 20, 2015: Community Roots Academy informed the District of their desire to enter into a long-term lease.

June 10, 2015: This request was brought to the Board for information/discussion.

July 22, 2015: An initial data analysis was provided to the Board of Trustees regarding four schools considered under-enrolled.

Following discussion, three schools were identified for a deeper analysis: Del Obispo, Crown Valley and Kinoshita. Based on Community Engagement, Hidden Hills was added to the analysis.

Community Engagement

Kinoshita: District staff met with Principal Luis, staff and PTA and scheduled community engagement meetings.

Community Engagement meetings were held August 25 at two different times.

What We Learned:

This school is significantly above the under-enrollment threshold the district had identified.

There is a close connection between the Boys and Girls Club.

Several programs exist to support the parents.

Due to high enrollment, significant consolidation issues would occur due to limited options within the feeder pattern/city limits.

Community Engagement

Del Obispo: District staff met with Principal Kraft, staff and PTA and scheduled community engagement meetings.

A Community Engagement Meeting was held on September 3.

What We Learned:

There are strong connections with the Boys and Girls Club.

There is a strong parent outreach program.

Sharing the MPR with Marco Forster Middle School is a challenge.

There are significant consolidation issues within the feeder pattern/city limits.

Community Engagement

Hidden Hills: Based on community feedback, Hidden Hills was brought into the analysis as it was just above the threshold considered for under-enrollment.

District staff met with Principal Sawyer, staff and PTA. Community Engagement meetings were held on September 3 & 4.

What We Learned:

A large proportion of the parents walk their children to school. Many families are without personal transportation.

There is a strong parent education program.

Title I resources provide a variety of resources before, during and after school.

There is a strong sense of community.

Community Engagement

Crown Valley: District staff met with Principal Parr, staff and PTA and scheduled community engagement meetings.

Community Engagement meetings were held on August 26 and September 2.

What We Learned:

Crown Valley prides itself on being an inclusive community—bringing together general education students with a high percentage of special education students. Every student feels welcome and part of a family.

Crown Valley has served as a special education hub since 2014.

Many special education parents are frustrated by multiple school changes for their children over the last several years.

Many Parent/PTA funded programs support the instructional program.

Factors

- Current enrollment
- Total capacity of the school site
- Facility Requirements (MPR, library, computer lab)
- Future development/increased enrollment
- Travel factors (transportation, traffic, walkers, etc.)
- Consolidation impact/available space at neighboring school sites (within existing feeder patterns/city boundaries)
- Existing specialized programs at school sites
- School of Choice
- Neighboring Charter Schools

Under-enrolled Schools

| DISTRICT "UNDER-ENROLLED" SCHOOLS | | | |
|-----------------------------------|---|--|-----------------------|
| School | 2015-2016 Projected Enrollment (Aeries) | Actual Enrollment (Aeries 6 th day) | City |
| Crown Valley | 261* | 240 | Laguna Niguel |
| RH Dana | 286 | 280 | Dana Point |
| Del Obispo | 337* | 353 | San Juan Capistrano |
| Wood Canyon | 364 | 386 | Aliso Viejo |
| Hidden Hills | 385 | 372 | Laguna Niguel |
| Ambuehl | 397 | 413 | San Juan Capistrano** |
| Hankey | 341 | 365 | Mission Viejo*** |
| | | | |
| | | | |
| | | | |
| | | | |

*General Ed, inclusive of student's w/ IEP's receiving special education services (Speech, SAI, DHH)

**Relocating Ambuehl students is not possible due to Capacity limits in near-by schools

***Hankey is not in the geographic location and if relocated, † could impact the K-8 Certified IB program

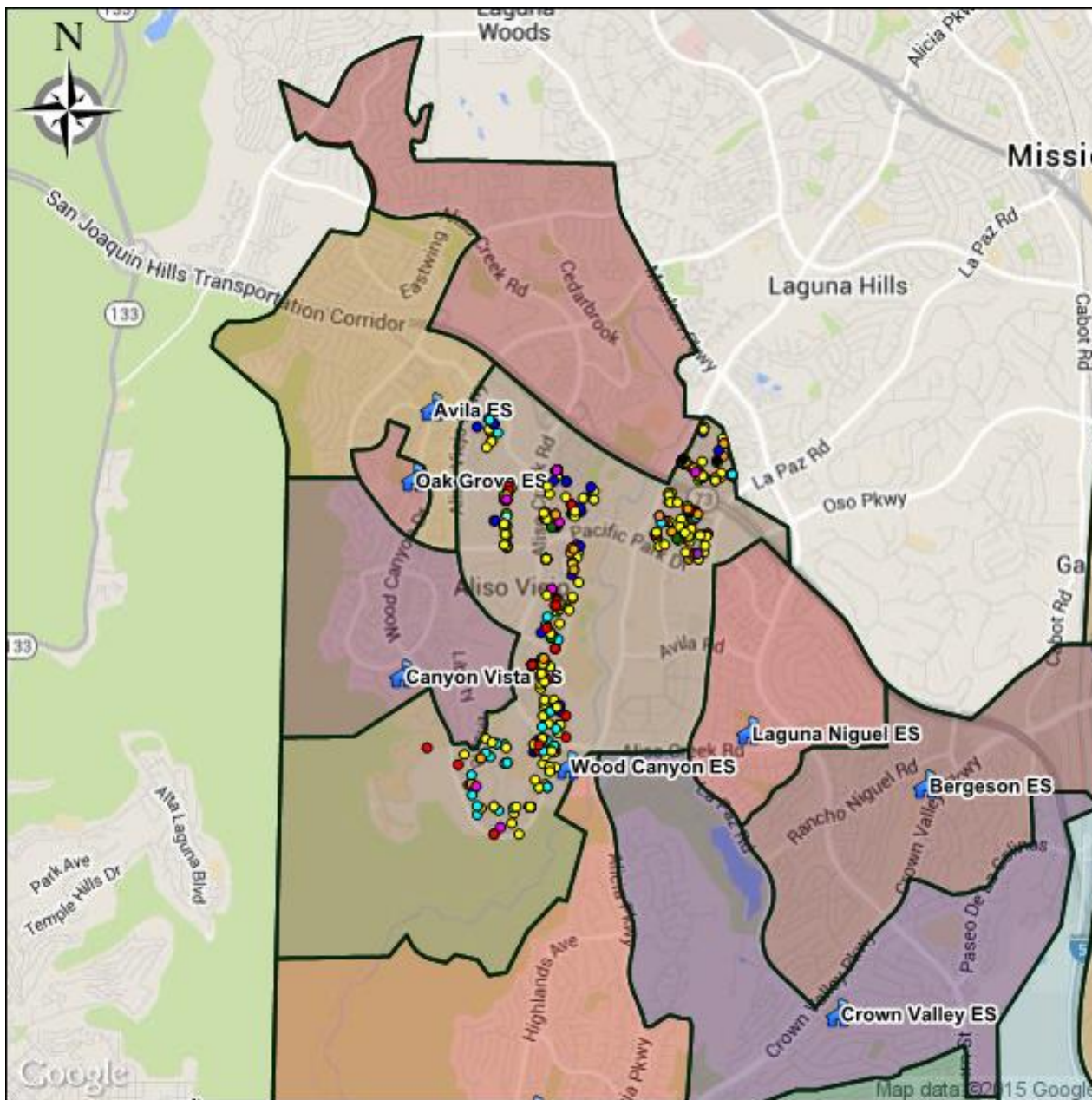


Data Sources

- School Enrollment numbers are determined through Aeries, the student information system.
- The capacity limit for each is determined using DecisionInsite reports.
- School of Choice (SOC) data is determined through information contained in Aeries.
- Special education enrollment numbers verified through Synergy, a special education database management system
- Future development information is received and kept by the Business Services department.
- Community Roots enrollment and wait list spread sheets are provided by CRA then sorted by District, grade level and city.

Wood Canyon Elementary School

- 627 CUSD students live in the Wood Canyon ES boundary
- 364 students are attending Wood Canyon
- Approximately 58% remain at Wood Canyon ES
- 265 student do not attend Wood Canyon ES



Open Enrollment 2015 Wood Canyon ES Grades 20 - 5

627 students plotted.
265 (42.3%) not attending assigned school.

| |
|-------------------------------|
| ● Hankey ES: 2 (0.3%) |
| ● San Juan ES: 3 (0.5%) |
| ● Viejo ES: 14 (2.2%) |
| ● Oak Grove ES: 69 (11%) |
| ● Moulton ES: 28 (4.5%) |
| ○ Palisades ES: 1 (0.2%) |
| ● White ES: 7 (1.1%) |
| ● Malcom ES: 2 (0.3%) |
| ● Castille ES: 1 (0.2%) |
| ● Canyon Vista ES: 29 (4.6%) |
| ● Concordia ES: 1 (0.2%) |
| ● Hidden Hills ES: 2 (0.3%) |
| ● Bergeson ES: 24 (3.8%) |
| ● Reilly ES: 2 (0.3%) |
| ● Wood Canyon ES: 362 (57.7%) |
| ● Avila ES: 48 (7.7%) |
| ● Arroyo Vista ES: 2 (0.3%) |
| ● Crown Valley ES: 18 (2.9%) |
| ● Ambuehl ES: 1 (0.2%) |
| ● Laguna Niguel ES: 11 (1.8%) |

Source: DecisionInSite
DECISIONINSITE

Options for Wood Canyon Students

| School | 6 th day enrollment | Capacity |
|-------------------|--------------------------------|----------|
| Don Juan Avila ES | 736 | 728 |
| Canyon Vista ES | 651 | 576 |
| Oak Grove ES | 711 | 728 |

Hidden Hills Elementary School

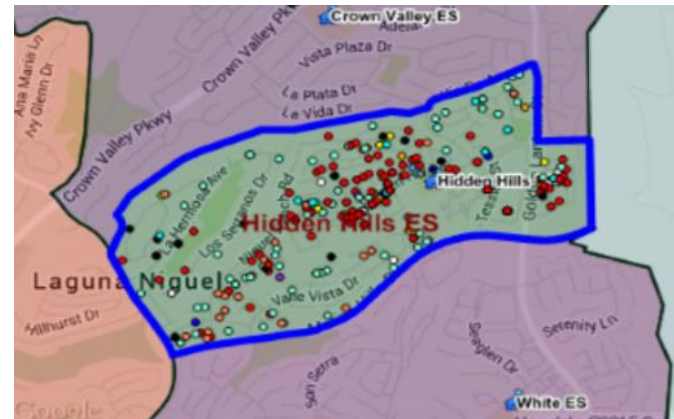
2015-2016

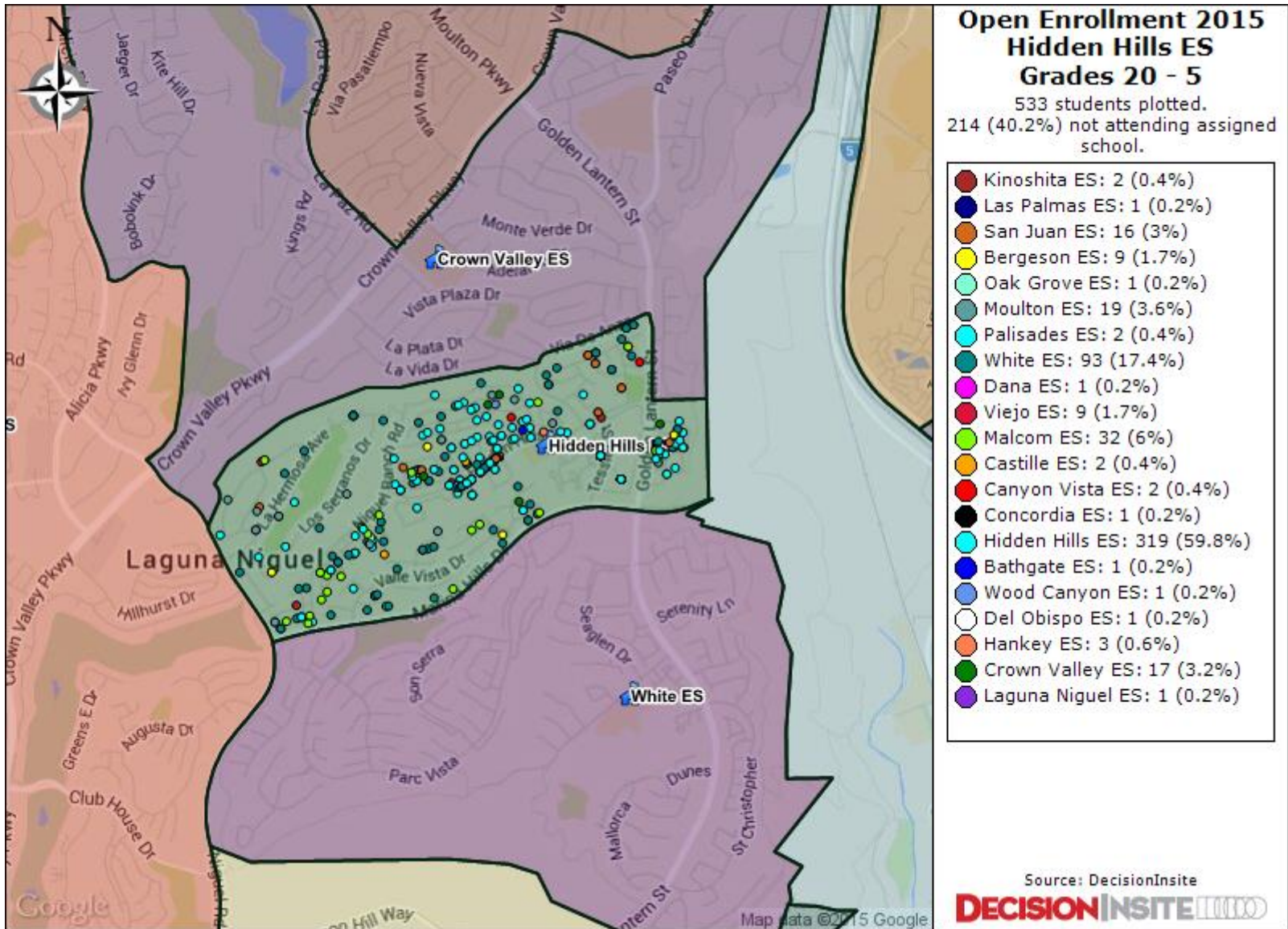
- General Education Current Enrollment: 369
 - Preschool: 71 (State Funded)
 - Structured Autism Pre-School: 9
 - Transitional Kinder: NA
 - Kindergarten: 56*
 - First: 52*
 - Second: 62*
 - Third: 56*
 - Fourth: 64*
 - Fifth: 79*
- Total K-5: 369*

***36 Special Education students grades K-5 in general education classes receiving speech and language, and specialized academic instruction**

2016-2017

- General Education Projected Enrollment: 344
 - Preschool: 72 (State Funded)
 - Transitional Kinder: NA
 - Kindergarten: 57
 - First: 57
 - Second: 50
 - Third: 62
 - Fourth: 55
 - Fifth: 63
- Total K-5: 344





June 2014-2015 Estimated Data

Hidden Hills Elementary School

- 533 CUSD students live in the Hidden Hills ES boundary
- Approximately 59% remain at Hidden Hills ES
 - 214 student do not attend Hidden Hills ES
 - 151 live in nearby apartments (estimated walkers)
 - Of these students who live nearby, 29 Choice to other district schools
 - Nearly 35% of students walk to school
 - Nearly 17% Choice to George White ES
 - Nearly 6% Choice to Malcom ES
 - Nearly 3% Choice each to Moulton, Crown Valley, & San Juan Elementary Schools

Crown Valley Elementary School

2015-2016

- Current Enrollment:
 - Preschool: 30 (AM class only)
 - SAI Self-Contained Preschool: 11
 - DHH Preschool: 4
 - SAI TK-5 self contained: 54
 - Transitional Kinder (TK): 53
 - Kindergarten: 18*
 - First: 28*
 - Second: 28*
 - Third: 30*
 - Fourth: 48*
 - Fifth: 41*

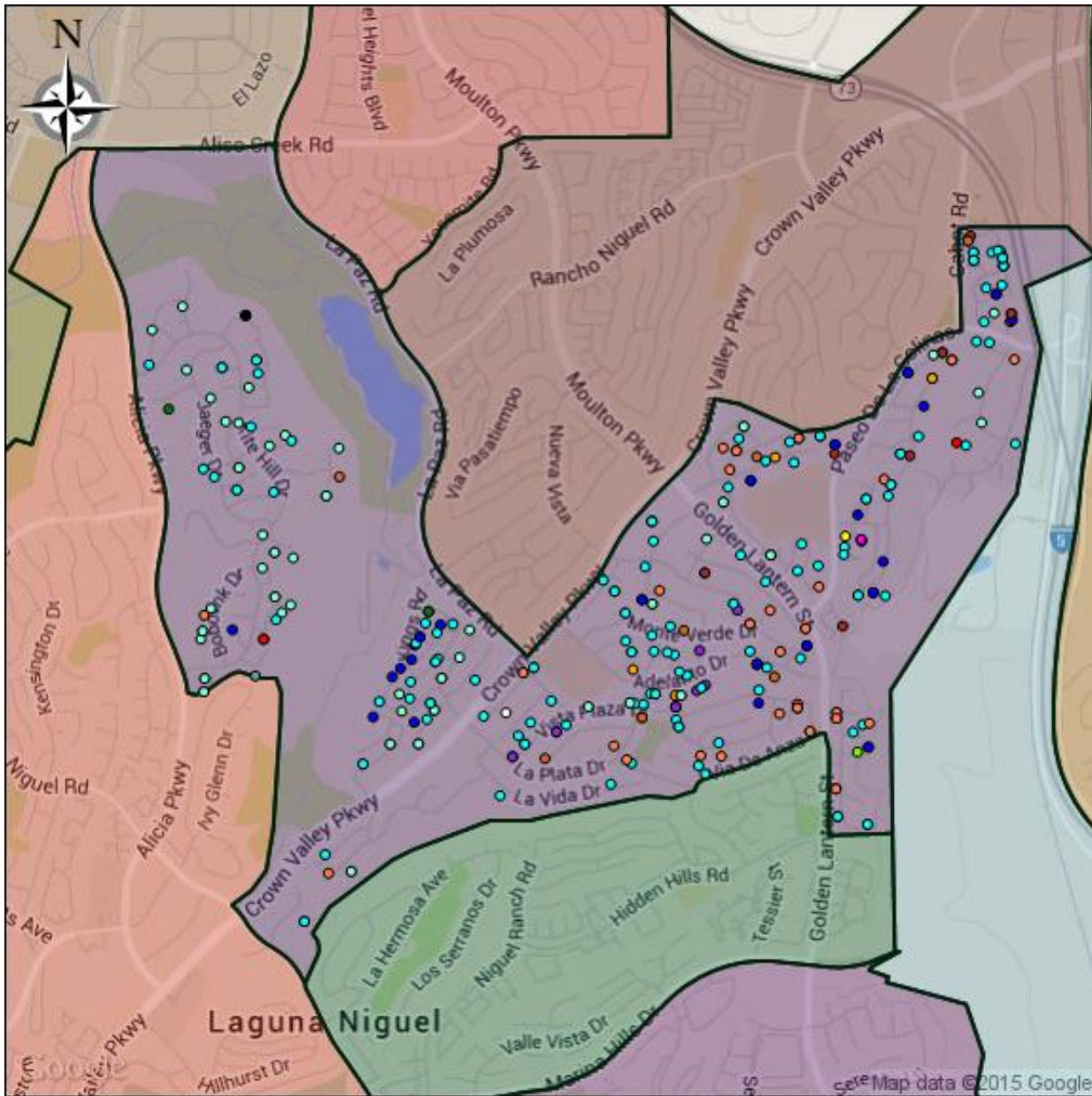
***40 Special Education students grades TK-5 on general education rosters receiving speech and language, DHH, and specialized academic instruction**

2016-2017

- Projected Enrollment: 221 (including TK)
 - Preschool: 24 (AM class only)
 - Transitional Kinder (TK): 60
 - Kindergarten: 19*
 - First: 19*
 - Second: 29*
 - Third: 28*
 - Fourth: 29*
 - Fifth: 45*

Preschool and TK are District programs placed at various sites

- There are 12 TK programs offered district wide
- There are 14 schools that offer State-funded Preschool
- There are 16 schools that offer Fee-based Preschool



**Open Enrollment 2015
Crown Valley ES
Grades 20 - 5**

330 students plotted.
194 (58.8%) not attending assigned school.

| | |
|------------------|-------------|
| Las Palmas ES | 1 (0.3%) |
| San Juan ES | 11 (3.3%) |
| Bergeson ES | 32 (9.7%) |
| Oak Grove ES | 2 (0.6%) |
| Moulton ES | 66 (20%) |
| White ES | 42 (12.7%) |
| Malcom ES | 11 (3.3%) |
| Castille ES | 3 (0.9%) |
| Canyon Vista ES | 3 (0.9%) |
| Hidden Hills ES | 5 (1.5%) |
| Bathgate ES | 1 (0.3%) |
| Wood Canyon ES | 1 (0.3%) |
| Viejo ES | 8 (2.4%) |
| Ambuehl ES | 1 (0.3%) |
| Crown Valley ES | 136 (41.2%) |
| Arroyo Vista ES | 2 (0.6%) |
| Laguna Niguel ES | 5 (1.5%) |

Source: DecisionInSite
DECISIONINSITE

Crown Valley Elementary School

- 330 CUSD students live in the Crown Valley ES boundary
 - 194 students do not attend Crown Valley ES
 - Approximately 41% attend Crown Valley ES
 - Nearly 20% Choice to Moulton ES
 - Nearly 12% Choice to George White ES

Crown Valley Elementary School

- Crown Valley is a special education hub
 - CV hosts TK-5 specialized academic instruction (SAI) self-contained classrooms as well as related services
 - CV is a feeder hub for 11 elementary schools
- Other HUBs include:
 - Reilly, Lobo, Del Obispo

Crown Valley Elementary School

- **Enrollment data as of 9/4/2015**
 - CV TK-5 Enrollment: 246
 - 40 of which receive SAI, DHH & Speech/Language services
 - SAI: 23
 - DHH: 9
 - Speech/Language: 8
 - SAI Self-Contained: 54 (TK-5th)
 - Total CV Enrollment TK-5: 300

Crown Valley Elementary School

- The goal of a hub is to have well balanced general education and special education populations
- Approximate percent of Special Education at each hub:
 - CVES: 31%
 - Reilly: 24%
 - Lobo: 21%
 - Del Obispo: 20%

Current Districtwide Programs Based at Crown Valley not Specific to the Hub:

- Pre-K SAI DHH: 7
- 1st-5 DHH: 9 (included in the 246)
- Language Builders: 59
 - A speech service for preschoolers district wide; majority of these students will attend their neighborhood school
- Intensive Behavior Intervention (IBI): Offices and IBI staff hold social skills groups for students based on home school and program
- Occupational Therapy (OT): Offices for OT Staff
- Pre-School Assessment Center (District wide)

Current Districtwide Programs Based at Crown Valley not Specific to the Hub:

- Supporting Early Academic & Language Skills (SEALS) Preschool Self-contained:
 - Based on Feeder Pattern: 11
 - Students would matriculate to CV SAI TK-5 program; additionally, students in the George White Pre-SEALS program would also matriculate to Crown Valley

Crown Valley Elementary School

- Students who would be impacted by the transition of the SAI self-contained classrooms to new location
 - Current TK-4: 43 students (based on 9/4/2015 enrollment)

Student Transition Data

For the purpose of the charts and looking at students impacted next year, this data only represents students in current TK-4th placements

| Crown Valley Self Contained Classrooms: TK-4 th | | | | | |
|---|--|--------------------------|---------------------------|-----------------------------|-------|
| Total # of Students TK-4th: 43 | Total # School Transitions by Students | | | | |
| Reason for Student Transition | No School Transitions | One School Transition | Two School Transitions | Three School Transitions | Total |
| No School Transition | 24 | | | | 24 |
| District Initiated Due to Relocation of Hub Program to CV | | 8 | | | 8 |
| IEP Team Decision to Place at CV | | 3 | 2 | 3 | 8 |
| School of Choice: Parent Initiated | | 1 | 1 | 1 | 3 |
| Total | 24 | 12 | 3 | 4 | 43 |

Students in a SAI Self-Contained Class Home School Data:

| Current CV SAI Self-Contained Students By Home School: Grades TK-4 | # of Students |
|---|----------------------|
| Wood Canyon | 13 |
| Hidden Hills | 6 |
| Oak Grove | 6 |
| Laguna Niguel | 3 |
| DJAMS | 3 |
| Bergeson | 3 |
| Del Obispo | 2 |
| Moulton | 2 |
| Crown Valley | 1 |
| RH Dana | 1 |
| Hankey | 1 |
| Viejo | 1 |
| George White | 1 |

- Theory of Action:
 - Ensure our neighborhood schools have programs that serve the student population needs while providing teachers cross-curricular articulation and professional learning communities.
 - Develop Innovative and Creative programs and services to increase enrollment at our under-enrolled schools.

Staff Recommendation

Based on the analysis and information gathered during the community engagement process, staff will recommend at the September 23 Board meeting that the District enter into a long-term lease with Community Roots Academy at the Crown Valley Elementary School site.