

# Draft Plans for Trustee Area Boundary Redistricting

**Capistrano Unified School District**

*December 15, 2021*

**Presented By:**

**Ron Van Orden, Director, Enrollment  
and GeoVisual Analytics**

**PowerSchool, LLC**

*DecisionInsite is now part of PowerSchool*

# Overview

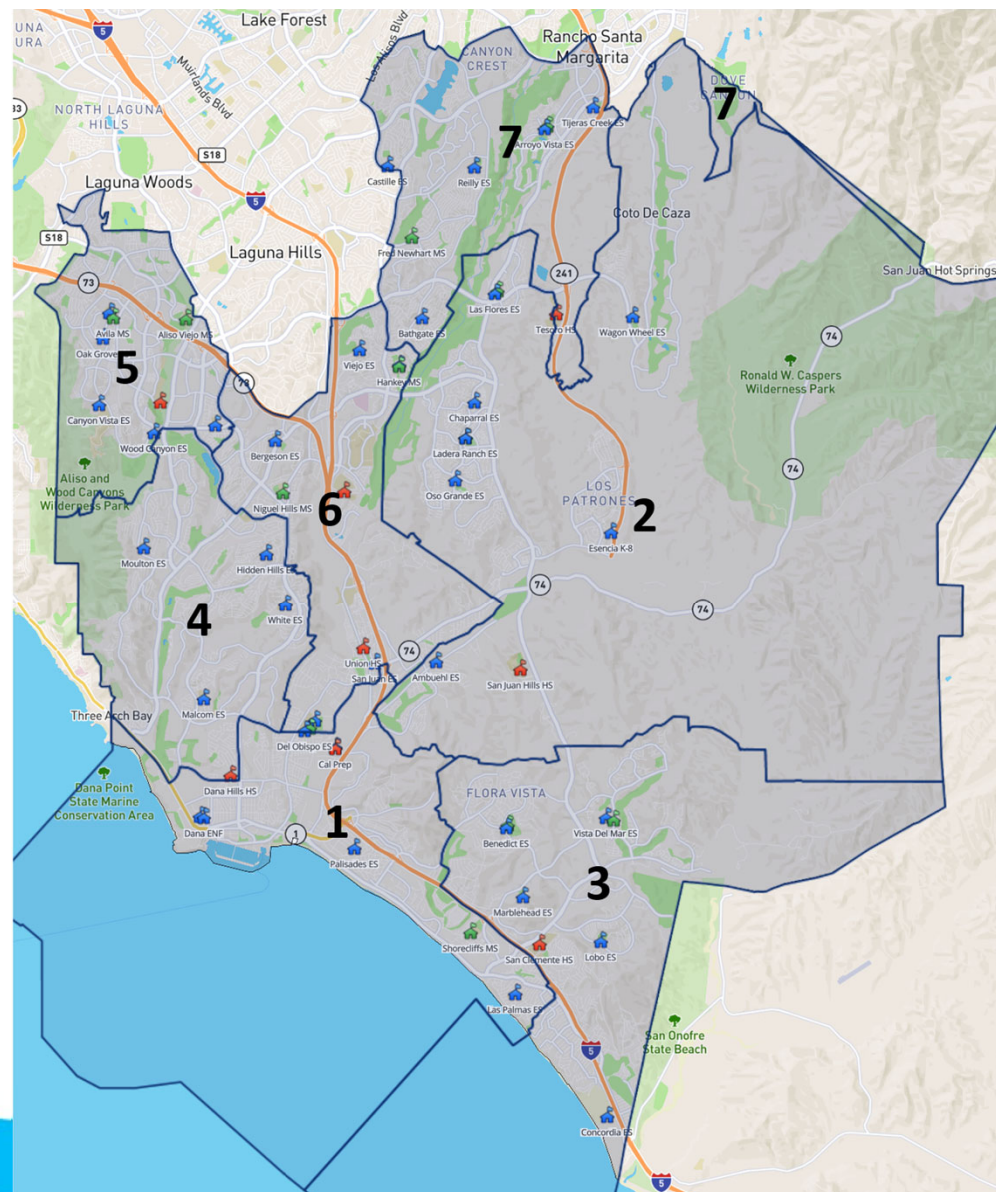
- Review of Criteria and Requirements
- Review of Current Trustee Areas
- Notable Challenges and Approach
- Review of Scenarios
- Questions and Answers, plus Next Steps

# Review of Criteria

- Requirements
  - Nearly equal number of inhabitants
  - Complies with, CVRA AB182, 2001 / Federal Voting Rights Act
  - Compact and contiguous
- Requests
  - Consider location of High Schools and school feeder patterns
  - City and Municipal Boundaries

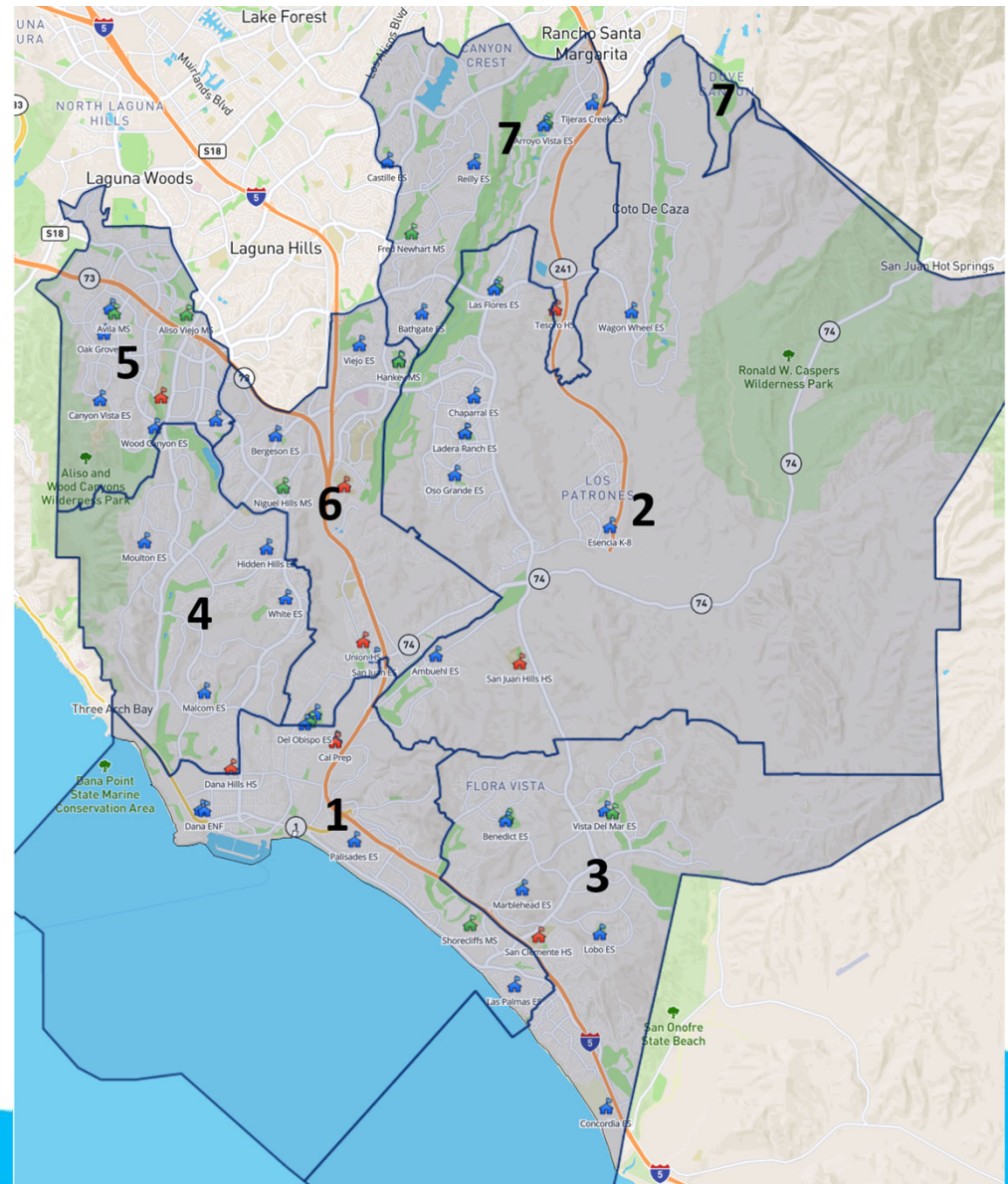
# Current Trustee Areas

- Trustee Areas 2 and, to a lesser degree, 5 have excess population
- The remaining Trustee Areas need to be balanced



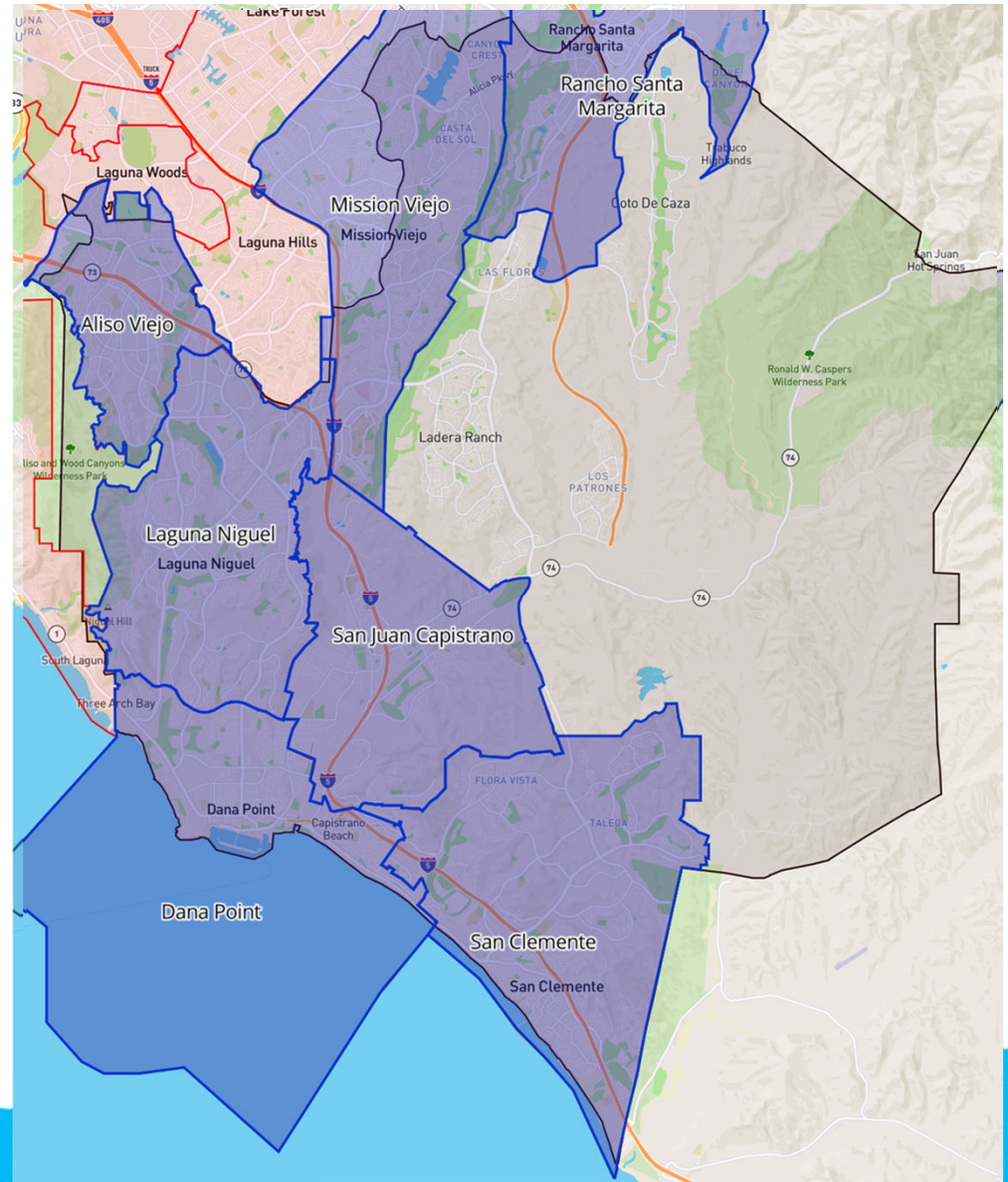
# Challenges and Approach

- Population Density
- Geographic features unique to Capistrano USD
- 7 Cities and additional unincorporated communities
- District Boundaries





# Current Trustee Areas With City Overlay



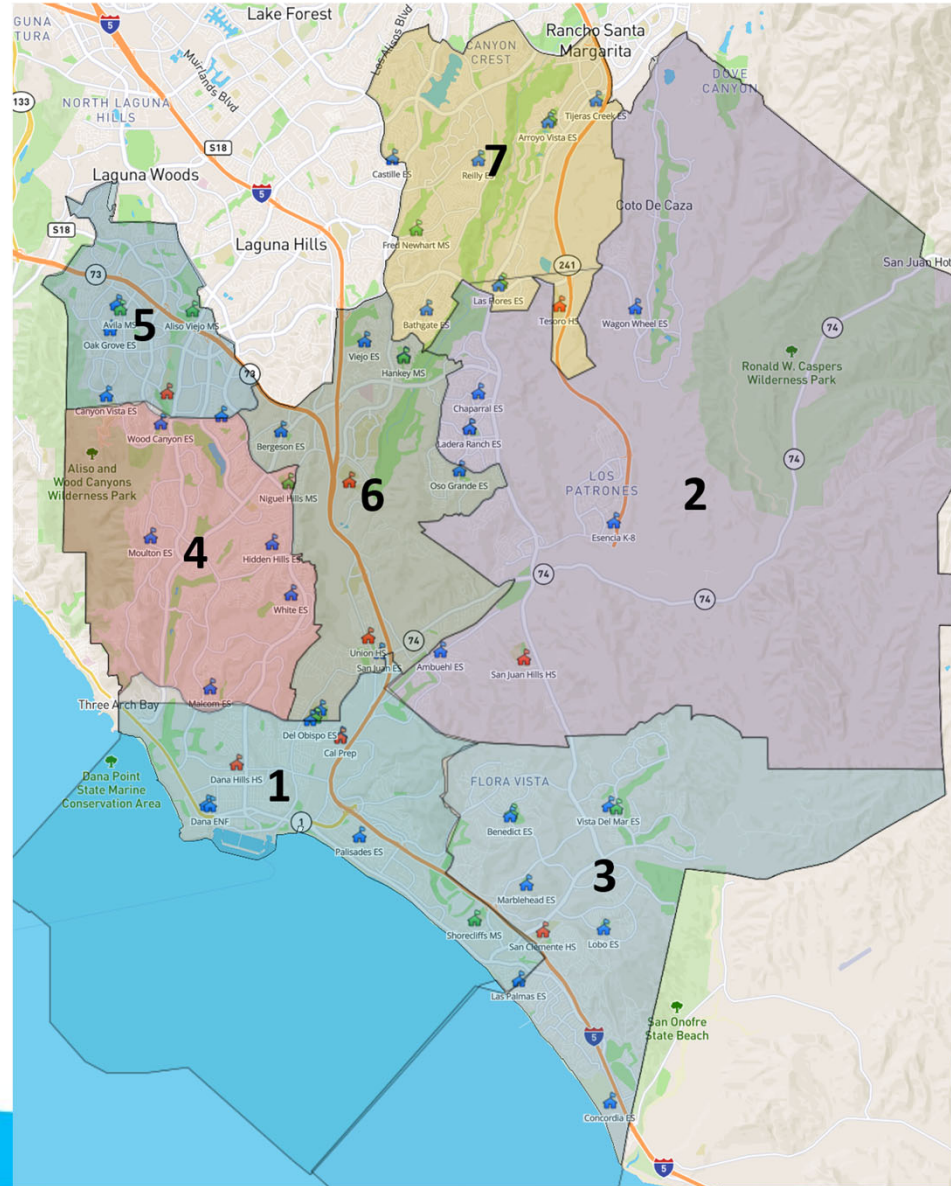
# Work Completed

- A total of nine scenarios were created – all of which were viable from a population balance standpoint
- Four were eliminated from consideration, as they would result in one Trustee having two high schools
- For consideration are five scenarios which are referred to as
  - Alpha
    - Delta – iteration of Alpha
    - Echo – iteration of Alpha
  - Bravo
    - Charlie – iteration of Bravo

# Alpha

## Population

Alpha		Population	Hispanic / Latino
1		52,064	11,117
2		51,800	6,772
3		53,209	8,939
4		50,446	7,816
5		51,576	9,364
6		51,594	17,205
7		51,328	7,607

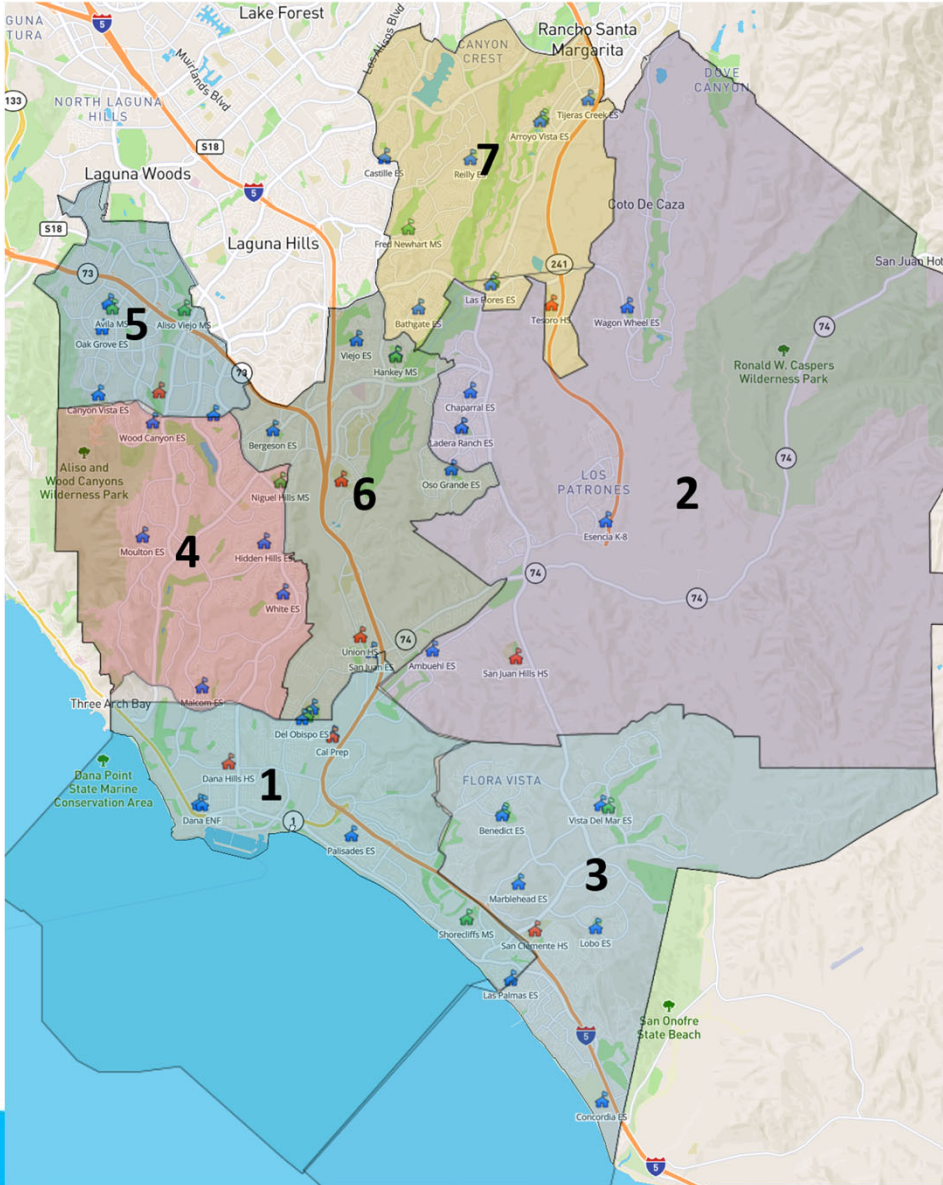




# Alpha

## Notes

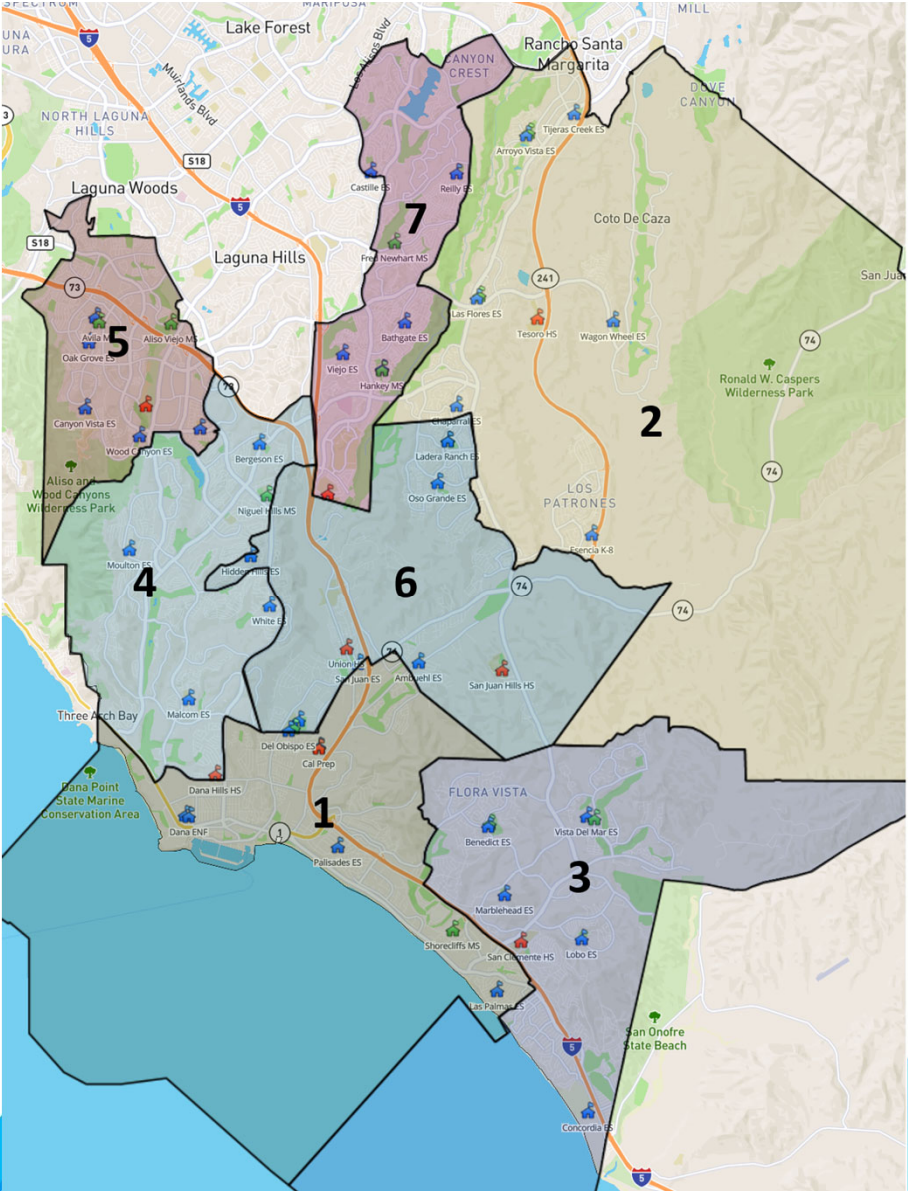
- Population well Balanced
- High Schools
  - *All Areas have 1 comprehensive HS, except 4*
  - *Area 4 gains Niguel Hills MS*
- Trustee Area 2, while balanced is not lower than the other areas



# Bravo

## Population

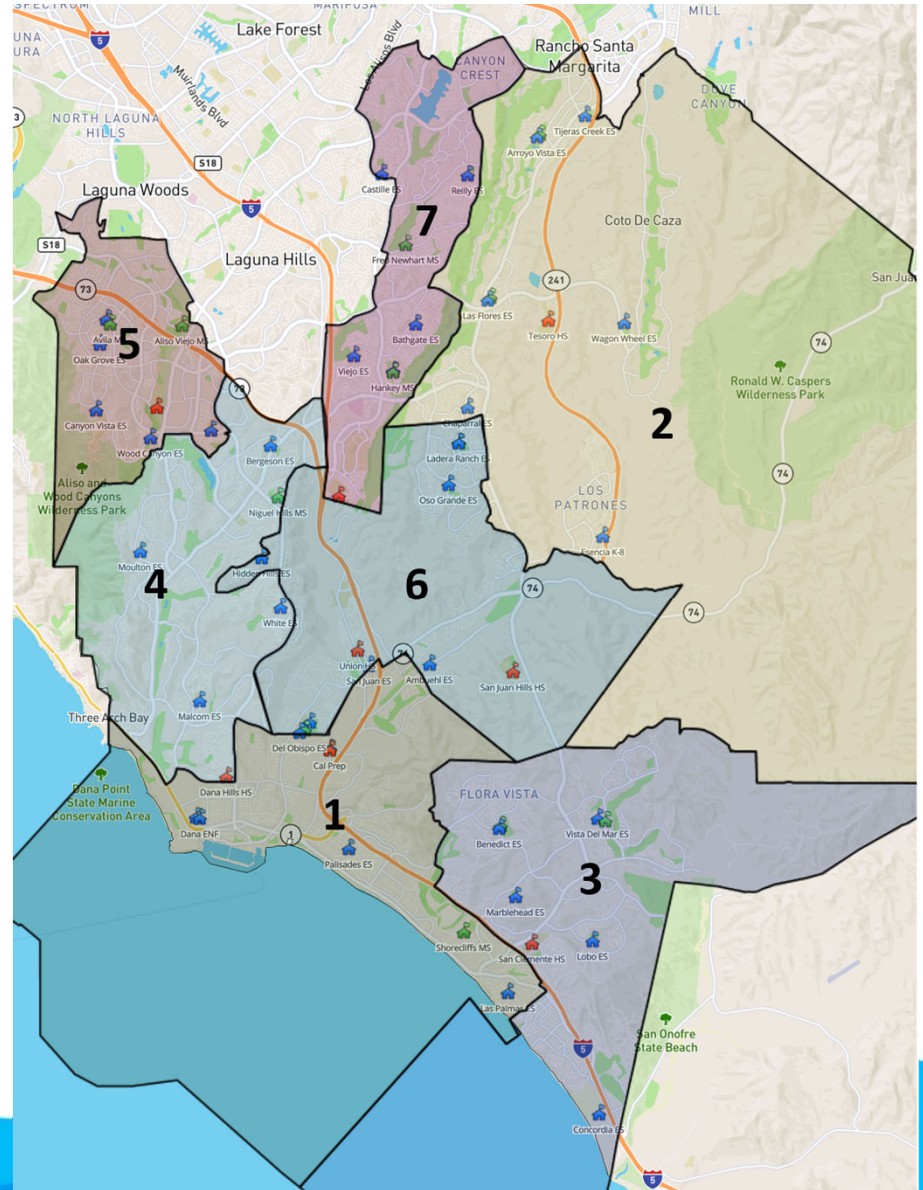
Bravo		Population	Hispanic / Latino
1		52,196	11,931
2		50,516	7,283
3		49,637	7,571
4		53,187	8,096
5		53,952	9,739
6		53,398	15,686
7		50,339	8,876



# Bravo

## Notes

- Population Balancing, some refinements still required
- High Schools
  - *All Areas have 1 comprehensive HS, except 1*
- Ladera Ranch would have two Trustee areas

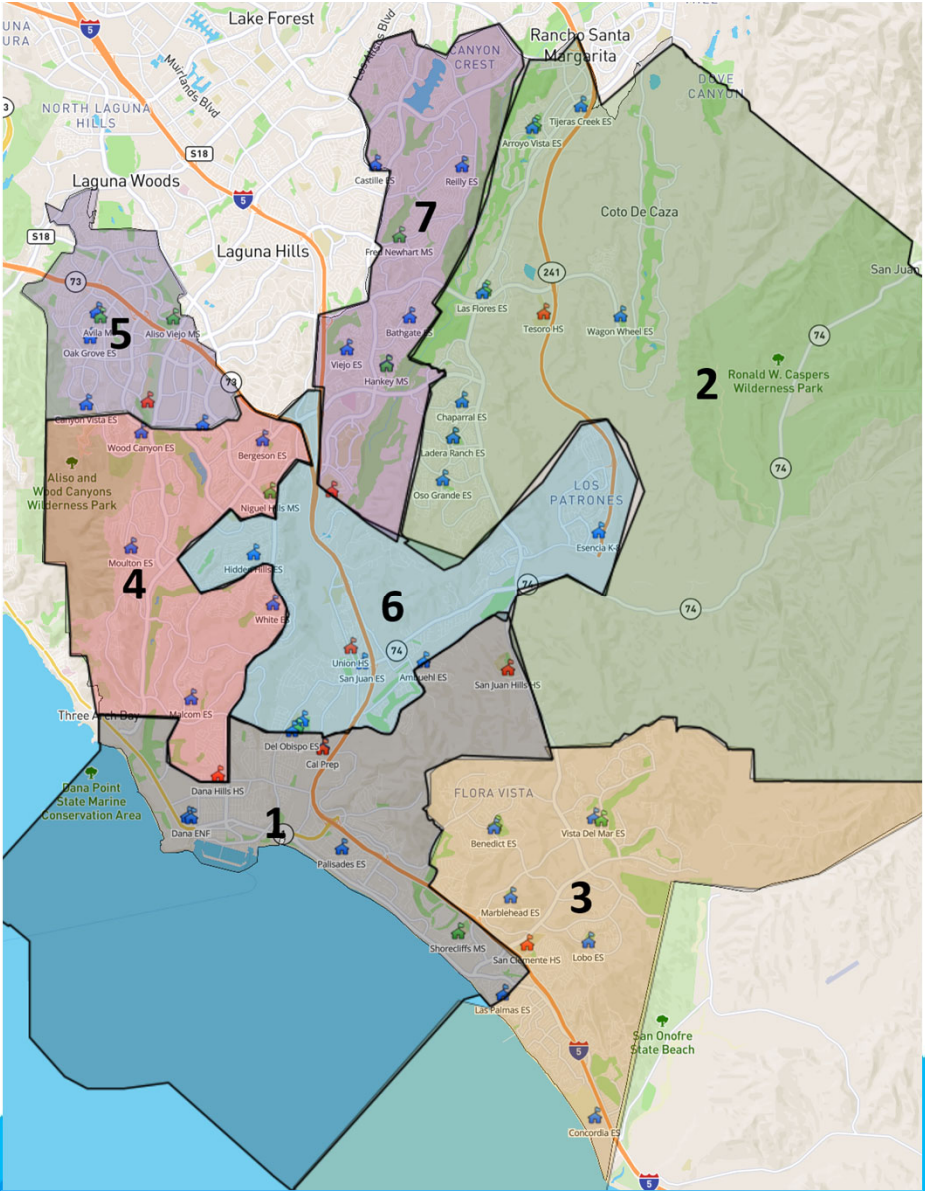




# Charlie

## Population

Charlie		Population	Hispanic / Latino
1		49,489	10,192
2		54,528	7,572
3		53,280	8,959
4		51,877	7,712
5		51,576	9,364
6		49,443	16,582
7		52,177	8,854

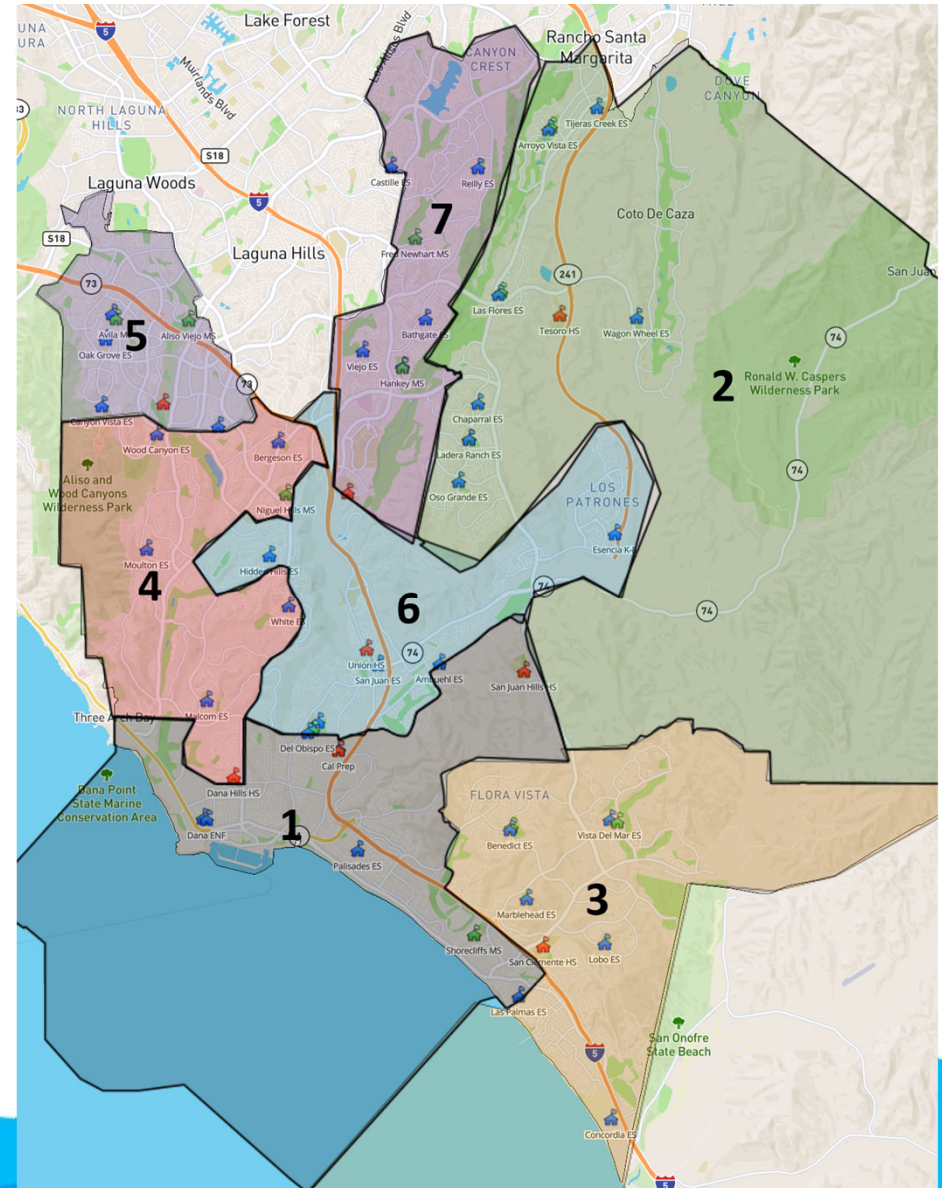




# Charlie

## Notes

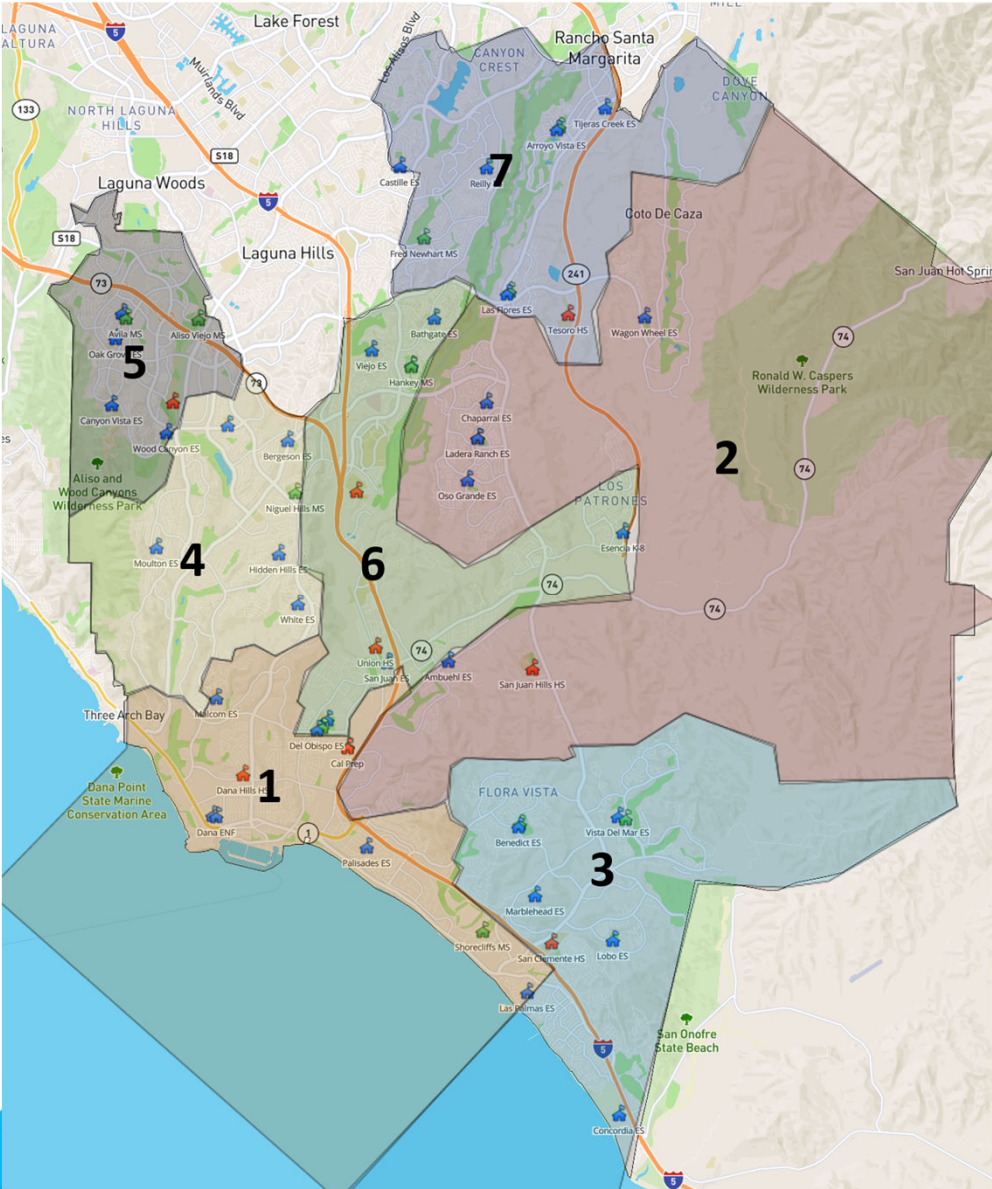
- Iteration of Bravo
- Population Balancing – Trustee Areas 2 & 7 need to cede population
- High Schools
  - *All Areas have 1 comprehensive HS, except 1*
- Ladera Ranch – core area is represented by one Trustee



# Delta

## Population

	Population	Hispanic / Latino
1	55,684	11,132
2	49,848	6,625
3	52,336	8,670
4	50,942	8,331
5	51,774	9,535
6	52,064	17,101
7	50,611	7,498

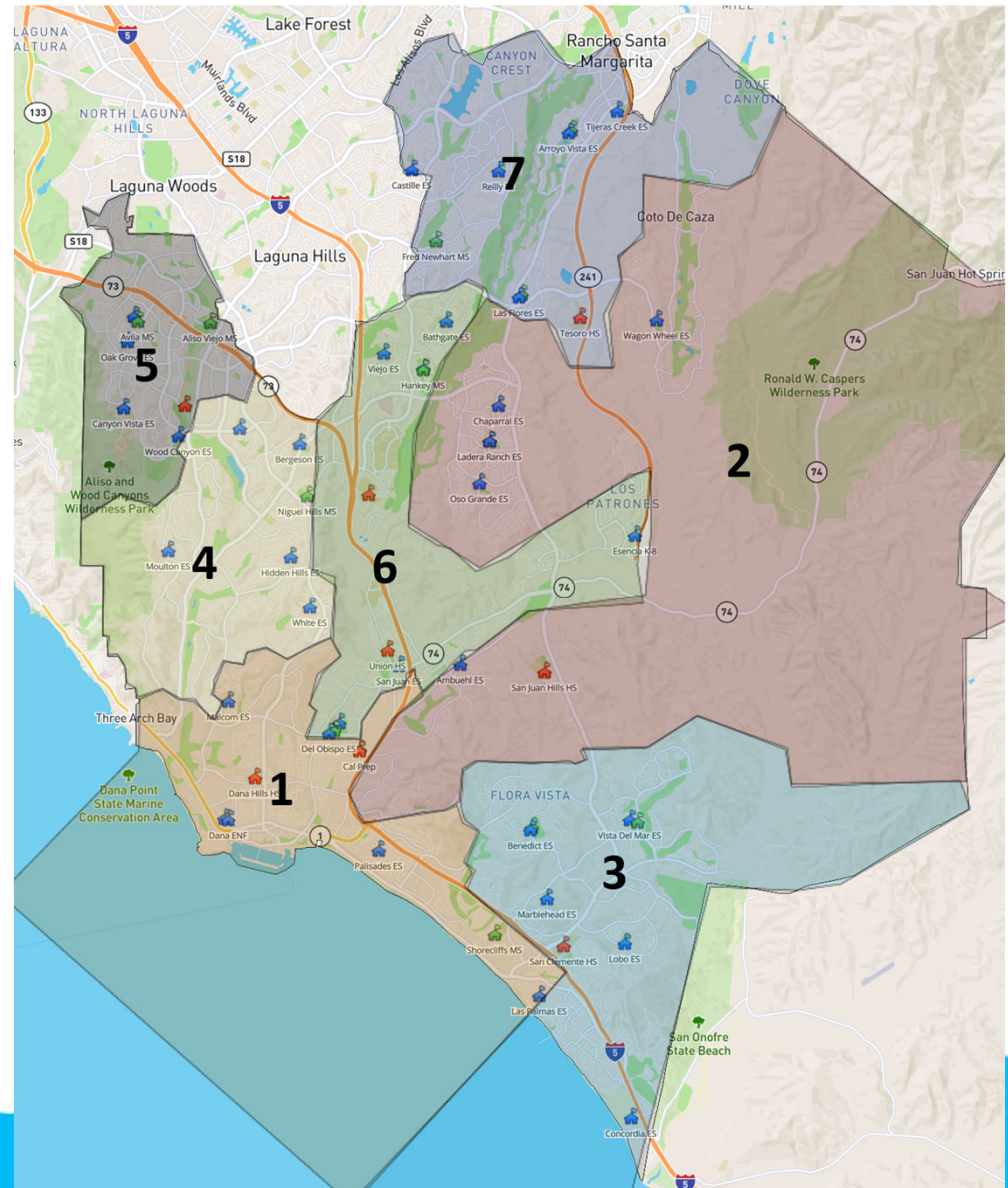




# Delta

## Notes

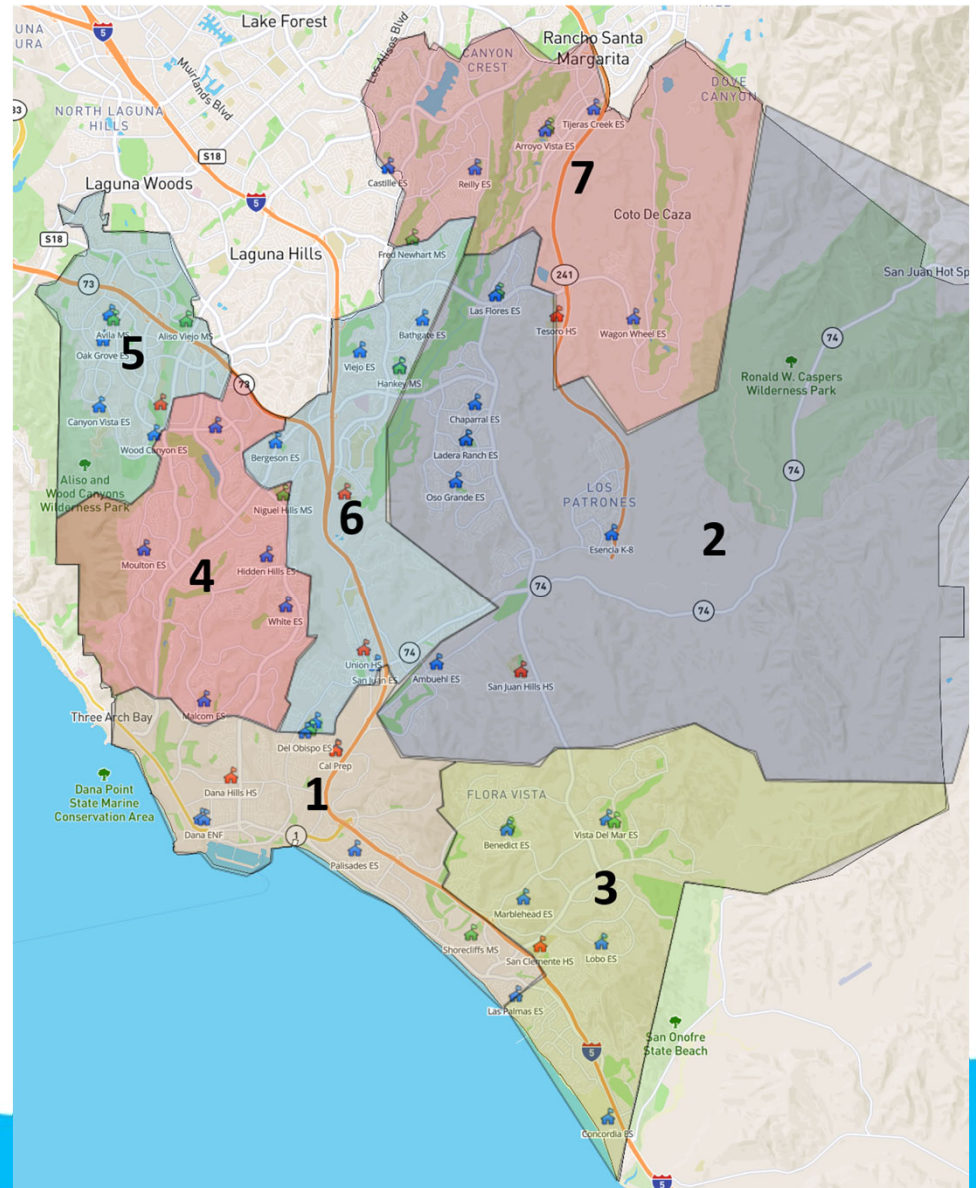
- Iteration of Alpha
- Population Balancing – Trustee Area 1 is high
- High Schools
  - *All Areas have 1 comprehensive HS, except Area 4*
  - *Area 4 gains Niguel Hills MS*



# Echo

## Population

Echo			
	Population		Hispanic / Latino
1	52,556		11,073
2	50,023		7,157
3	53,024		8,849
4	54,357		8,600
5	51,774		9,535
6	50,609		16,600
7	50,751		7,016

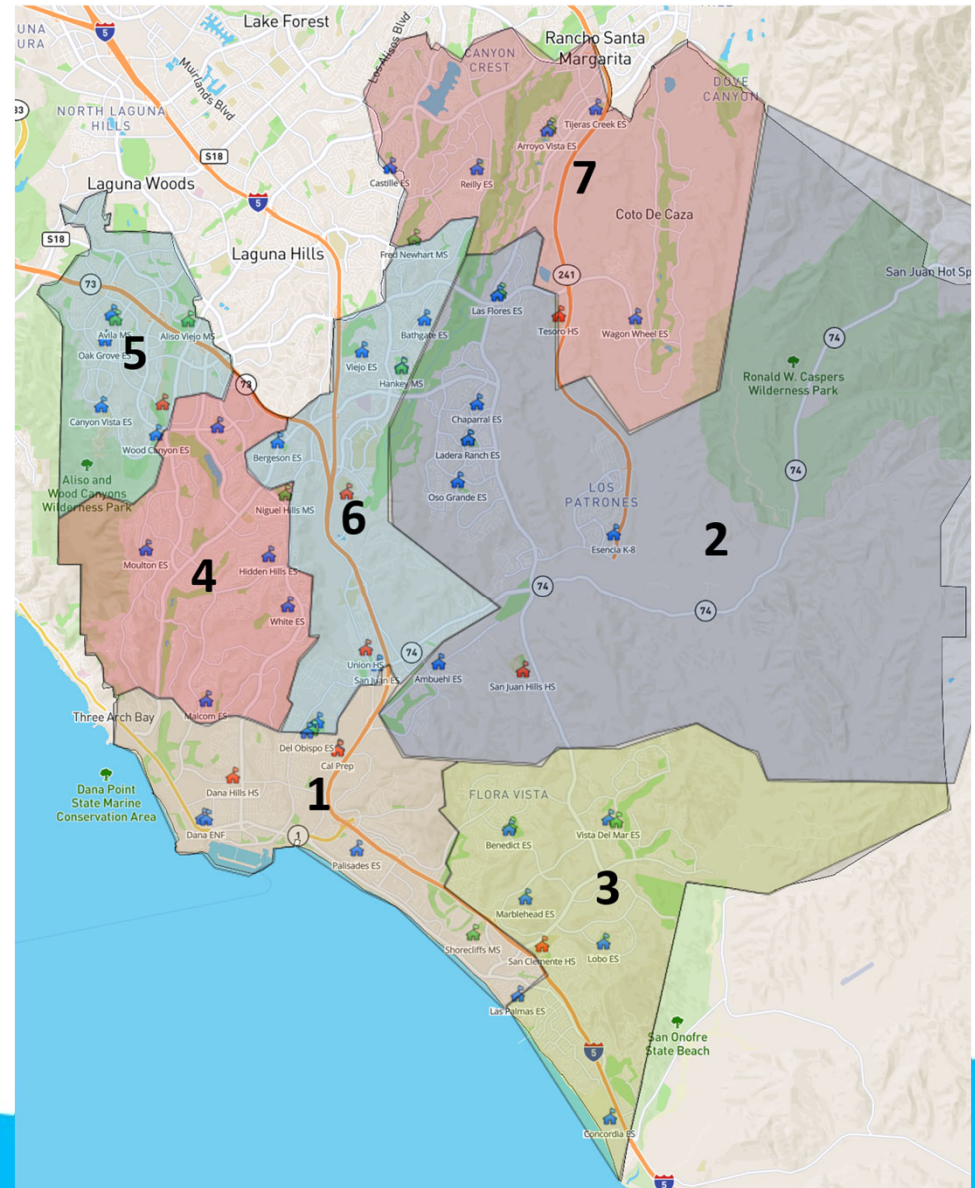




# Echo

## Population

- Iteration of Alpha
- Population is Balanced – Area 4 is slightly higher than ideal
- Trustee Area 2 is below ideal
- High Schools
  - *All Areas have 1 comprehensive HS, except Area 4*
  - *Area 4 gains Niguel Hills MS*



# Questions and Next Steps

- Guidance and direction from Board of Trustees
- Refinement of Scenario(s)
- Final Scenarios will be presented with full Population and Demographic analysis