

CAPISTRANO UNIFIED SCHOOL DISTRICT  
**BOARD REPORT**

To: Board of Trustees

From: Clark Hampton, Deputy Superintendent, Business and Support Services

Date: December 15, 2021

Board Item: Draft Plans for Trustee Area Boundary Redistricting

---

**HISTORY**

This item is required by Education Code § 5019.5 and occurs every ten years. With the passage of Measure H on November 2, 2010, the District changed the method of election to “by Trustee area” requiring each member of the Board of Trustees to reside within, and be elected by, the voters living within that particular Trustee area or District. In 2012, the 2010 census was used to adjust Trustee area boundaries to balance the population evenly among each Trustee area.

**BACKGROUND INFORMATION**

The U.S. census counts each resident of the country, where they live on April 1, every ten years ending in zero. In September 2021, the federal government released the results of the 2020 decennial census. The census data was also made available for the District. As populations shift, Trustee areas need to be evaluated and rebalanced every ten years using data from the U.S. census. Education Code § 5019.5 describes the timeline of the process. This Trustee area analysis needs to be completed, revised, and established prior to March 1, 2022.

On November 3, 2021, Trustees adopted Resolution No. 2122-21, Establishing Criteria for Adjusting Trustee Area Boundaries which put in place the following criteria for adjusting Trustee area boundaries:

1. Each Trustee area shall contain a nearly equal number of inhabitants;
2. Trustee area borders shall be drawn in a manner that complies with the Federal Voting Rights Act;
3. Trustee areas shall consist of contiguous territory in as compact a form as possible;
4. Trustee area borders shall respect communities of interest as much as possible;
5. Trustee area borders shall follow visible natural and man-made geographical and topographical features as much as possible;
6. Trustee area borders shall follow municipal boundaries as much as possible;
7. Trustee area borders shall take into consideration the location of schools;
8. Trustee area borders shall take into consideration the school feeder pattern into high schools;
9. Trustee area borders shall take into consideration expected future population growth within each Trustee area over the next ten years.

## **CURRENT CONSIDERATIONS**

DecisionInsite (PowerSchool), the District's demographer, has been working on a set of draft plans for Trustee review and consideration in conjunction with this evening's scheduled public hearing.

Attached for Trustee review are the following exhibits:

- Resolution No. 2122-21, Establishing Criteria for Adjusting Trustee Area Boundaries
- Redistricting Schedule – adopted November 3, 2021
- Current Trustee Area Map

Attached for Trustee consideration is the following exhibit:

- Draft Plans

**Note: The draft plans in the exhibit are not final. The plans are meant to provide various concepts for consideration. The maps are subject to minor changes in order to refine boundaries to follow streets or geographic features, eliminate any overlap and to ensure the total population in each area is within the allowable variance.**

## **FINANCIAL IMPLICATIONS**

The financial impact associated with the Trustee area boundary redistricting process is estimated to be between \$12,300 and \$18,000.

## **STAFF RECOMMENDATIONS**

It is recommended the Board President recognize Clark Hampton, Deputy Superintendent, Business and Support Services, to present this item.

Following discussion, it is recommended the Board of Trustees provide direction regarding the draft plans for Trustee area boundary redistricting.

**APPROVED BY:** Clark Hampton, Deputy Superintendent, Business and Support Services

**CAPISTRANO UNIFIED SCHOOL DISTRICT**  
San Juan Capistrano, California

**RESOLUTION NO. 2122-21**

**ESTABLISHING CRITERIA FOR  
ADJUSTING TRUSTEE AREA BOUNDARIES**

*WHEREAS*, the voters of the District adopted Measure H at an election on November 2, 2010; and

*WHEREAS*, Measure H altered the way Trustees of the District are elected to “by-trustee area” election where each Trustee must reside within the designated Trustee area boundary and is elected only by the voters in that Trustee areas; and

*WHEREAS*, pursuant to Measure H, the District now employs a by-trustee area election method with Trustee areas redrawn based on the 2010 census to balance inhabitants in each Trustee area; and

*WHEREAS*, Education Code § 5019.5 requires school districts employing by-trustee area election method to adjust the boundaries of Trustee areas following the decennial federal census; and

*WHEREAS*, the District has undertaken a study of its Trustee areas using 2020 federal census data in order to ensure compliance with state and federal voting law; and

*WHEREAS*, the Federal Voting Rights Act (42 U.S.C. § 1973) prohibits the use of any voting qualification, or prerequisite to voting, or standard, practice, or procedure, in a manner which results in a denial or abridgement of the right of any citizen of the United States to vote on account of race or color; and

*WHEREAS*, federal law and the Equal Protection Clause require that each Trustee area be equal in population to ensure compliance with the “one person, one vote” rule; however, deviations (less than five percent [5%] greater than or less than the ideal, for a total of ten percent [10%] deviation) are presumptively constitutional under the Equal Protection Clause where required to meet an official criteria; and

*WHEREAS*, the population changes in each Trustee area, comparing the 2010 to the 2020 census, meets the thresholds necessitating an adjustment; and

*WHEREAS*, the Board of Trustees has instructed PowerSchool, its demographer, and District staff to prepare maps using 2020 census data that adjust the Trustee areas to create Trustee areas as nearly equal as possible to ensure the lawfulness of the District’s election procedures, but wishes to provide official criteria for any needed deviations;

*BE IT RESOLVED* the Board of Trustees of Capistrano Unified School District hereby adopts the following criteria to guide the establishment of Trustee areas for the Board of Trustees:

1. Each Trustee area shall contain a nearly equal number of inhabitants;
2. Trustee area borders shall be drawn in a manner that complies with the Federal Voting Rights Act;
3. Trustee areas shall consist of contiguous territory in as compact a form as possible;
4. Trustee area borders shall respect communities of interest as much as possible;
5. Trustee area borders shall follow visible natural and man-made geographical and topographical features as much as possible;
6. Trustee area borders shall follow municipal boundaries as much as possible;
7. Trustee area borders shall take into consideration the location of schools;
8. Trustee area borders shall take into consideration the school feeder pattern into high schools;
9. Trustee area borders shall take into consideration expected future population growth within each Trustee area over the next ten years;

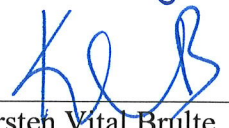
*BE IT FURTHER RESOLVED* the Superintendent or designee shall be authorized to take any additional acts needed to effectuate the purpose and intent of this Resolution.

AYES: (7)  
NOES (0)  
ABSENT (0)  
ABSTAIN (0)

I, Kirsten Vital Brulte, Secretary of the Capistrano Unified School District Board of Trustees, hereby certify that the above and foregoing Resolution was duly and regularly adopted by the said Board at the meeting thereof on the 3<sup>rd</sup> day of November, 2021, by a roll call vote of said Board.

IN WITNESS THEREOF, I have hereunto set my hand and seal this 3<sup>rd</sup> day of November, 2021.

  
\_\_\_\_\_  
Gila Jones, Clerk of the Board

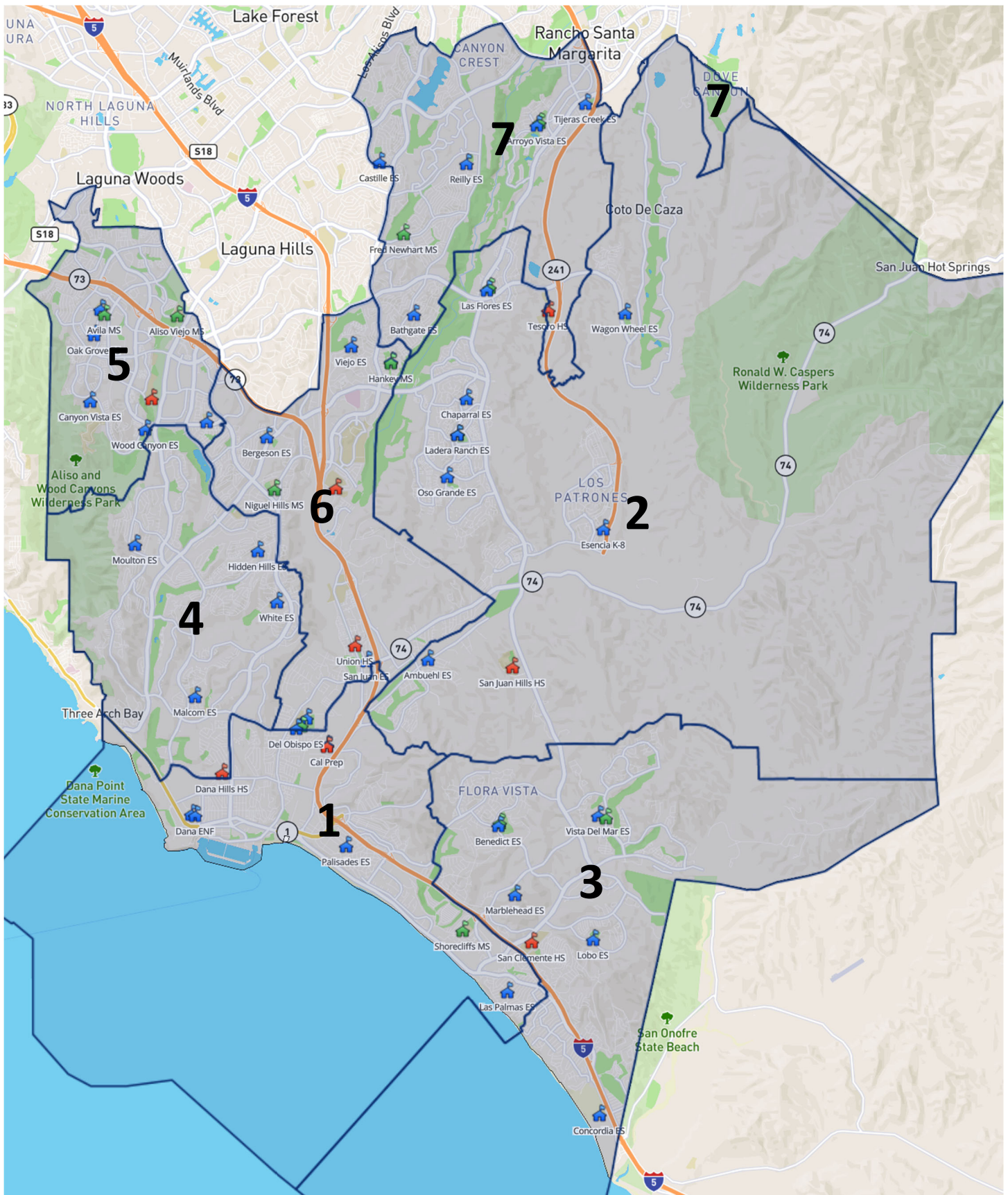
  
\_\_\_\_\_  
Kirsten Vital Brulte  
Superintendent  
Secretary of the Board of Trustees



**Capistrano Unified School District**  
**Redistricting Schedule**  
**November 3, 2021**

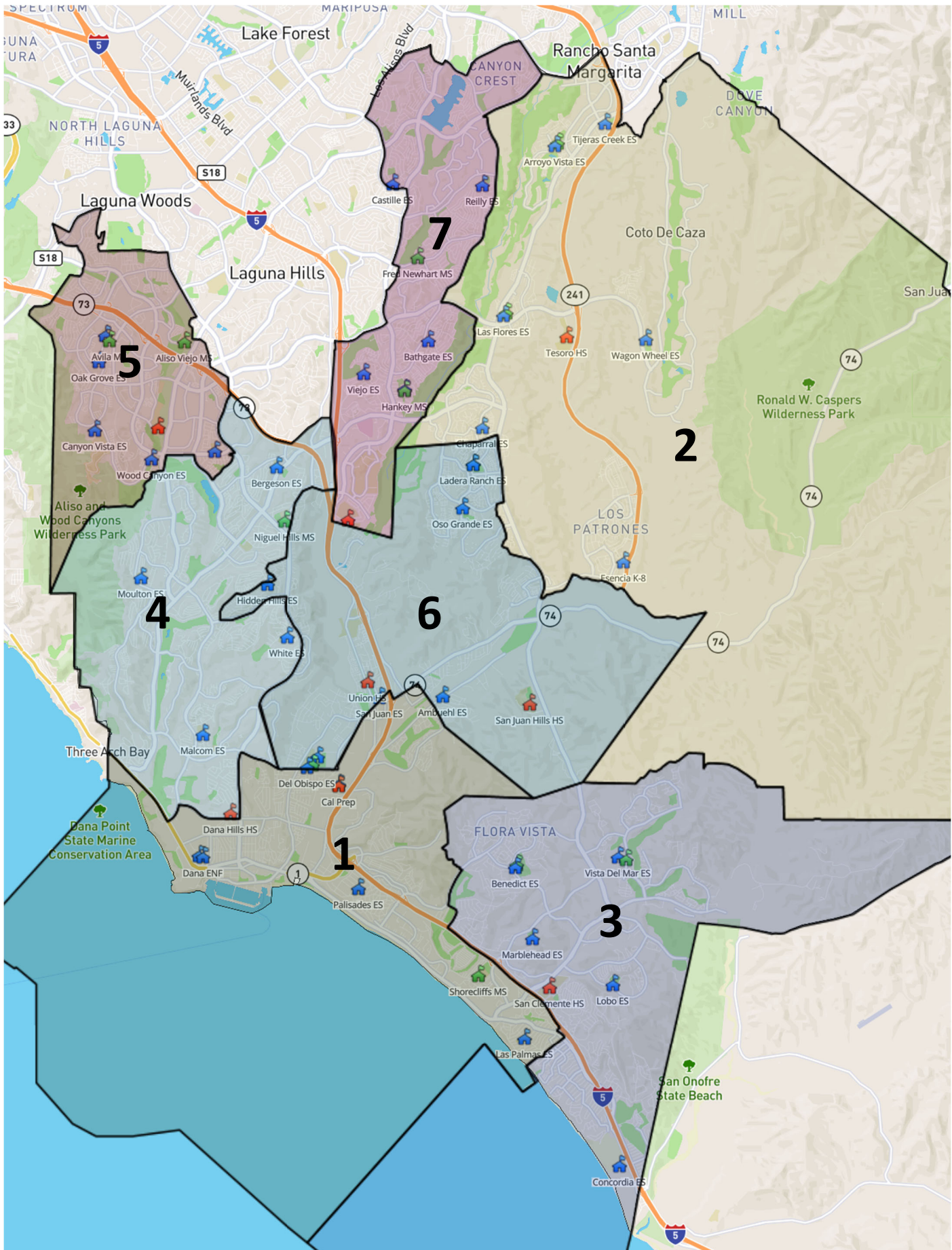
Completion Deadline: March 1, 2022

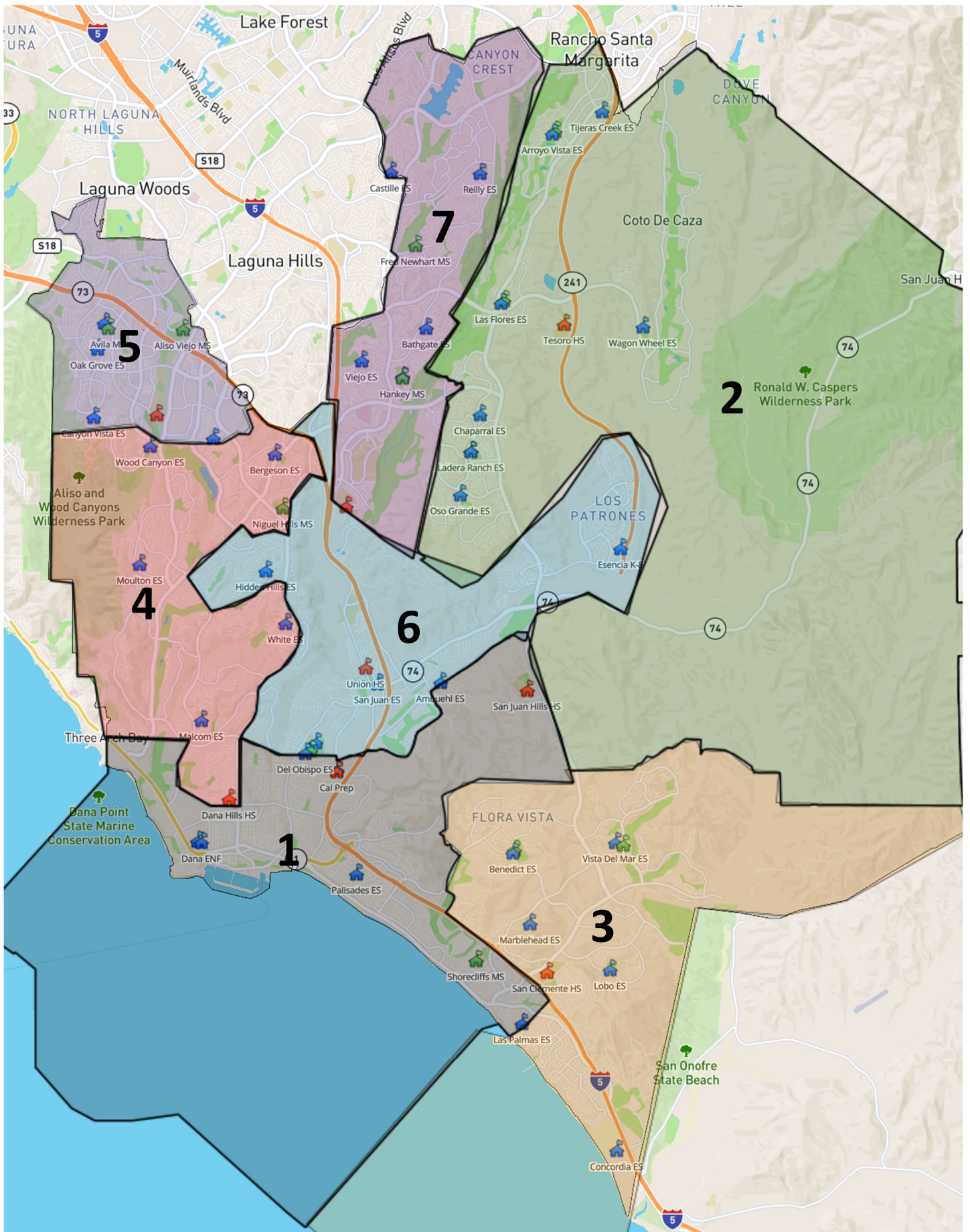
Meeting Date	Deliverables	Action Items
11/3/2021	Criteria Resolution 2122-21 Demographics of existing trustee areas Introduction to process & rules Presentation on schedule	Adopt criteria Resolution 2122-21 Provide direction on number of map options for consideration
12/15/2021	Draft Plans	Public Hearing on Draft Plans Direction to demographer for possible revisions
1/19/2022	Revised Draft Plan(s)	Review plans and provide direction on any desired plan revisions to be prepared for final adoption
2/16/2022	materials for final adoption	Final Adoption



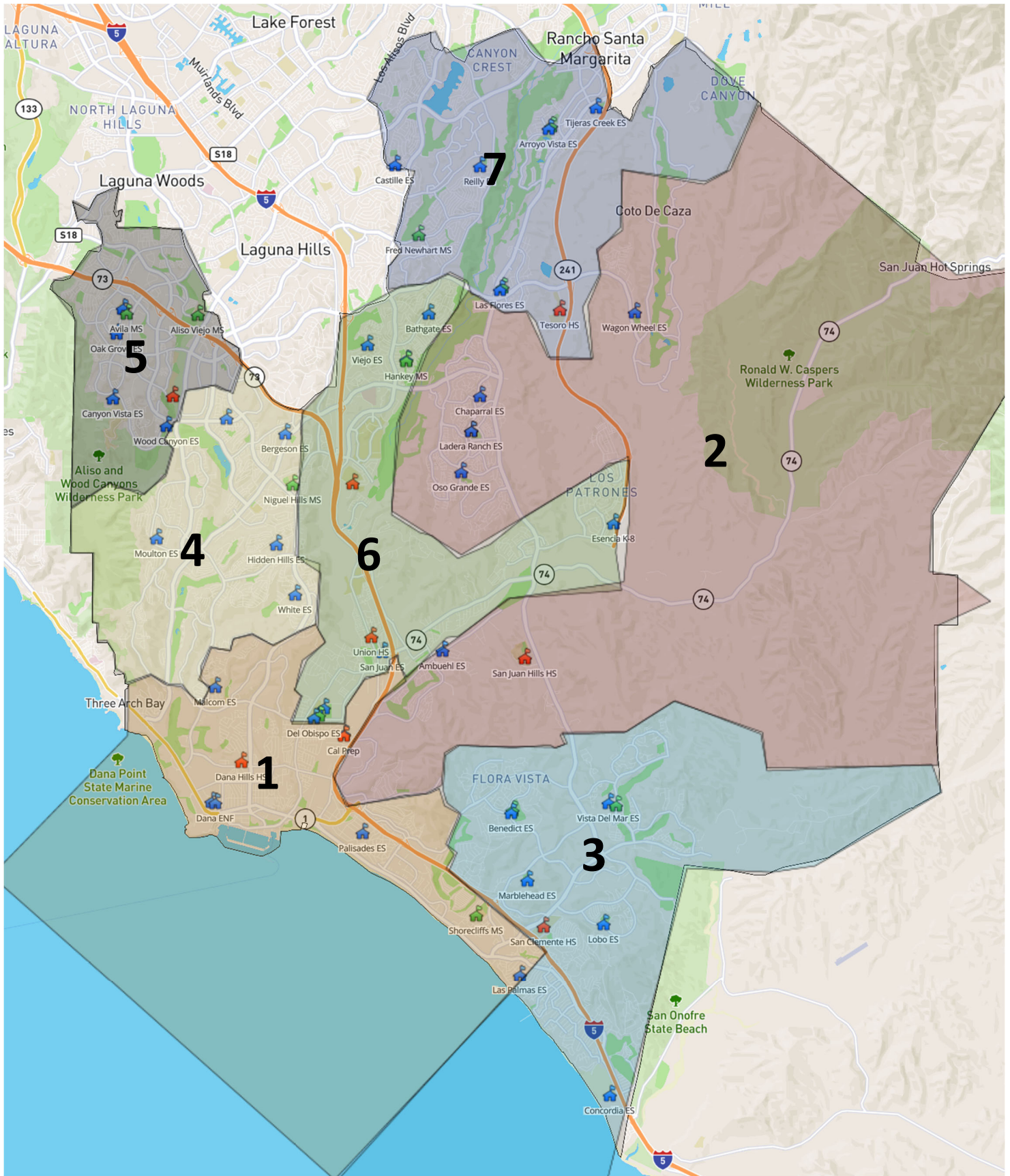
CURRENT







CHARLIE



**DELTA**

