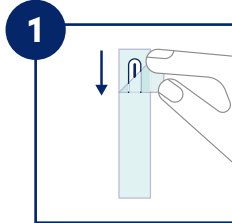
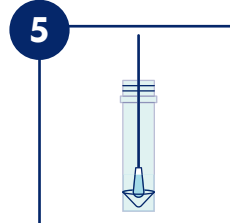


## Providing a Nasal Swab Sample



**1** **Open the package with the swab.**

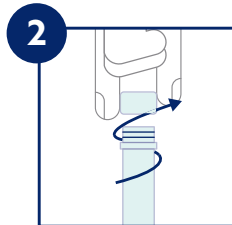
Peel open where indicated. Leave the swab in the package for now.



**5** **Put the swab into the collection tube.**

The soft tip of the swab that went into your nose should go into the tube first.

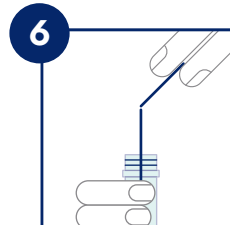
**Note:** The handle will be sticking out.



**2** **Unscrew the lid of the collection tube.**

Keep the lid somewhere you can easily find it.

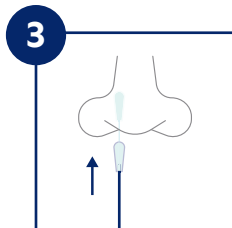
**Careful:** Don't spill the liquid inside the tube.



**6** **Snap the handle off.**

Holding firmly onto the tube, snap the handle off where it naturally bends.

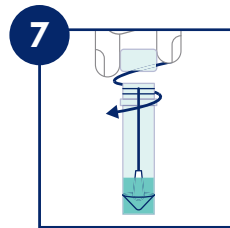
**Careful:** Don't spill the liquid inside the tube.



**3** **Rotate the swab tip in the first nostril, 3 times.**

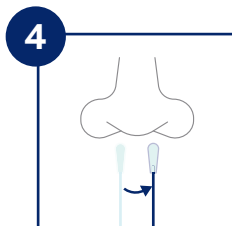
Pull swab out of its packaging and insert it into one nostril just until the soft tip is no longer visible. Rotate it in a circle around the inside edge of your nostril at least 3 times.

**Careful:** Don't touch the soft tip with your hands.



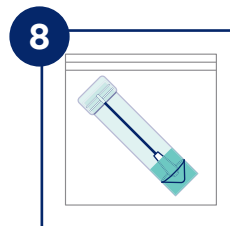
**7** **Screw on the top of the collection tube.**

You're almost done! Make sure the top is screwed on tightly.



**4** **Repeat in the other nostril, 3 times.**

Use the same soft tip to repeat the previous step in the second nostril.



**8** **Put the tube into the specimen bag.**

Seal the bag by closing the ziplock seal.